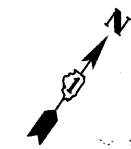
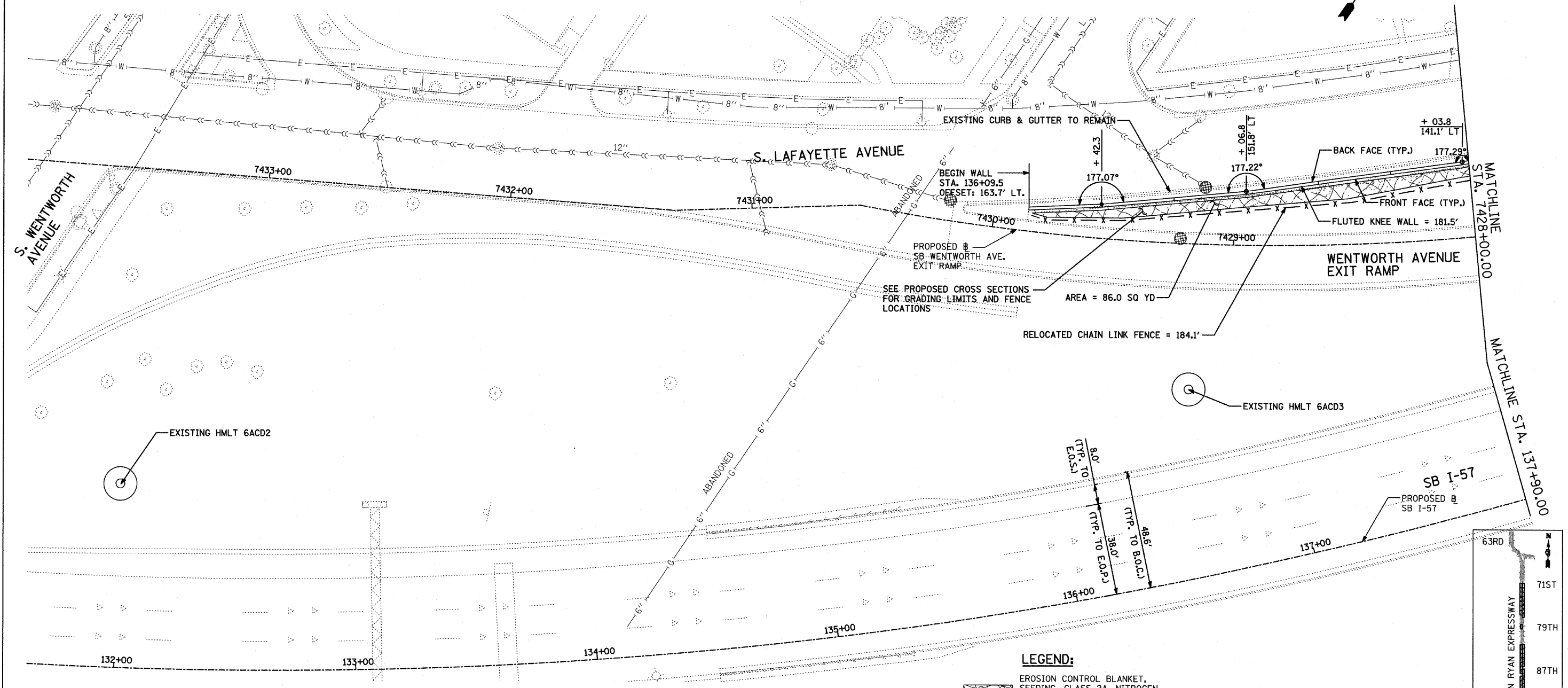


F.A.I. RTE.	SECTION	COUNTY	TOTAL SHEETS	SHEET NO.
94	1516.1 I-9	COOK	59	23
STA. 117+38.11 (SB I-57) TO STA. 154+09.94 (SB I-57)		STA. 218+35.72 (WB I-57)		
FED. ROAD DIST. NO.		ILLINOIS	FED. AID PROJECT	

62977

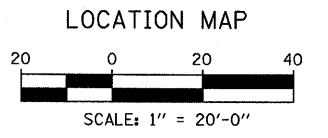
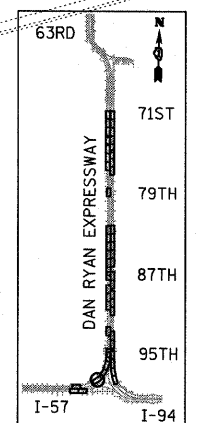


NOTES:

1. STATION OFFSET CALLOUTS ALONG THE LENGTH OF EITHER FLUTED KNEE WALL OR FLUTED KNEE WALL, SPECIAL ARE TAKEN FROM THE BACK FACE SIDE AT PROPOSED EXPANSION JOINT LOCATIONS.
2. THE CONTRACTOR SHALL PROTECT AND USE CAUTION DURING CONSTRUCTION OPERATIONS AROUND ALL EXISTING UTILITY FACILITIES.

LEGEND:

- EROSION CONTROL BLANKET, SEEDING, CLASS 2A, NITROGEN, PHOSPHORUS, AND POTASSIUM FERTILIZER NUTRIENTS, TOPSOIL FURNISH AND PLACE, 4"
- EROSION CONTROL BLANKET, SEEDING, CLASS 5A (MODIFIED), NITROGEN, PHOSPHORUS, AND POTASSIUM FERTILIZER NUTRIENTS, TOPSOIL FURNISH AND PLACE, 12" COMPOST FURNISH AND PLACE, 6"
- EROSION CONTROL BLANKET, SEEDING, CLASS 4 (MODIFIED), NITROGEN, PHOSPHORUS, AND POTASSIUM FERTILIZER NUTRIENTS, TOPSOIL FURNISH AND PLACE, 12" COMPOST FURNISH AND PLACE, 6"
- INLET FILTER
- CONSTRUCTION JOINT AT FLUTED KNEE WALL BEND
- EXPANSION JOINT



REVISIONS	
NAME	DATE

ILLINOIS DEPARTMENT OF TRANSPORTATION
F.A.I. 94 (DAN RYAN EXPRESSWAY)
PROPOSED PLAN
SB I-57
STA. 131+63.00 TO STA. 137+90.00

SCALE: 1"=20'
DATE: JANUARY 16, 2009

DRAWN BY: AMB, MAF
CHECKED BY: TGB, MI

TYLIN INTERNATIONAL

1/15/2009 10:50:09 AM