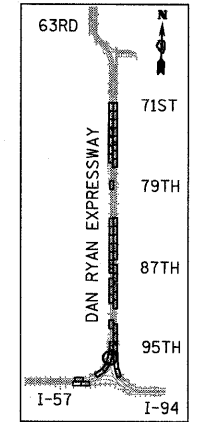
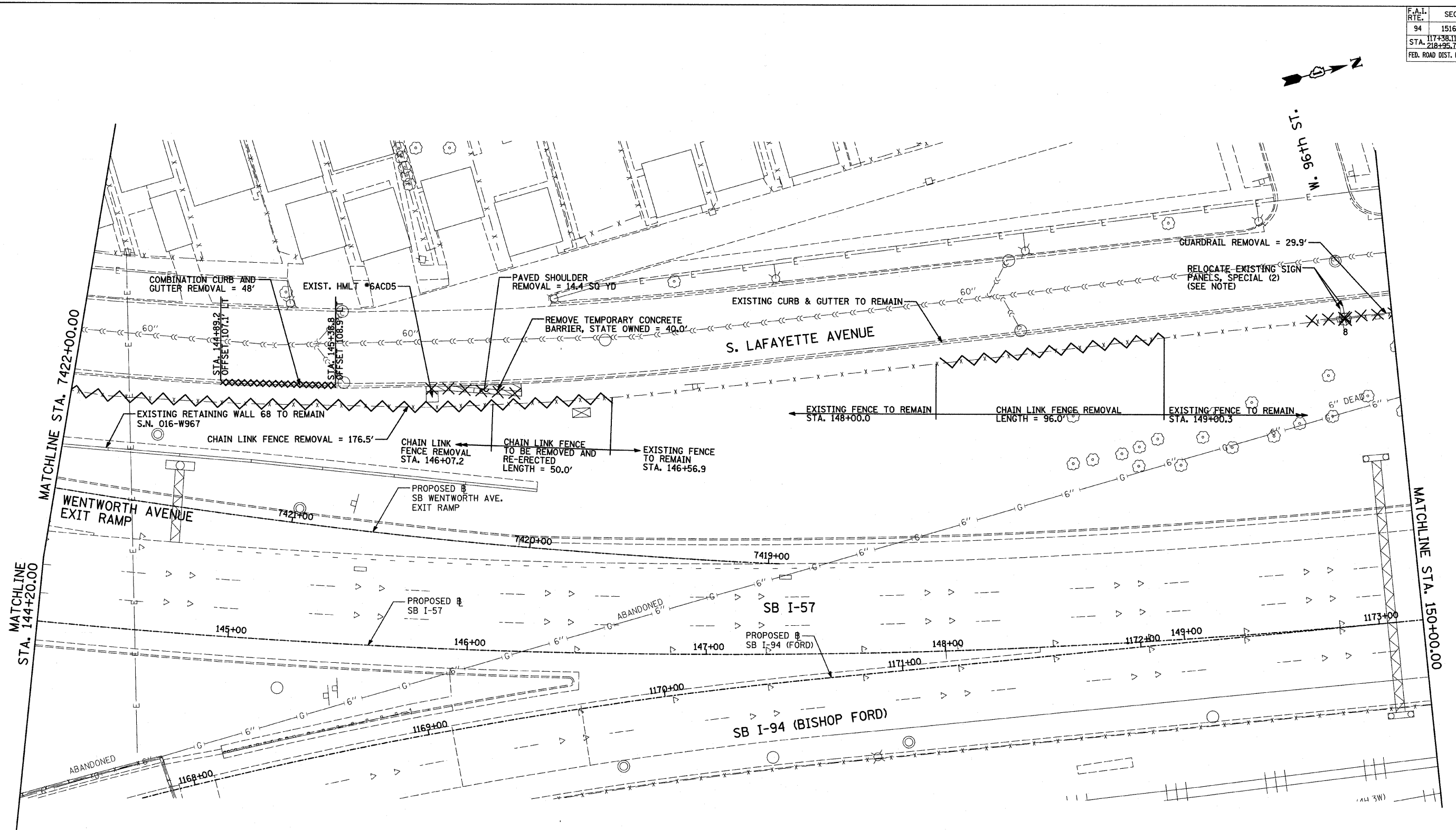
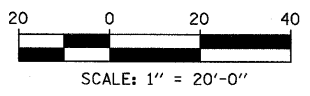


F.A.I. RTE.	SECTION	COUNTY	TOTAL SHEETS	SHEET NO.
94	1516.1 I-9	COOK	59	26
STA. 117+38.11 (SB I-57) TO STA. 154+09.94 (SB I-57)				
STA. 218+35.72 (NB I-57) TO STA. 225+73.12 (NB I-57)				
FED. ROAD DIST. NO. ILLINOIS FED. AID PROJECT				

62977



LOCATION MAP



**LEGEND:**

- PAVED SHOULDER REMOVAL
- CHAIN LINK FENCE REMOVAL
- CONCRETE BARRIER/GUARDRAIL REMOVAL
- TREE REMOVAL (UNITS) (NO UNIT SHOWN = <6)
- CONCRETE CURB AND GUTTER REMOVAL AND REPLACEMENT

**NOTE:**

SIGNS SHALL BE RELOCATED AT A MINIMUM OF 3 FEET FROM THE FRONT FACE OF THE PROPOSED KNEE WALL. EXACT PLACEMENT SHALL BE DETERMINED BY THE ENGINEER. PAID FOR AS "RELOCATE EXISTING SIGN PANEL, SPECIAL".

**TYLIN** INTERNATIONAL

REVISIONS	
NAME	DATE

ILLINOIS DEPARTMENT OF TRANSPORTATION  
**F.A.I. 94 (DAN RYAN EXPRESSWAY)**  
**REMOVAL PLAN**  
**SB I-57**  
**STA. 144+20.00 TO 150+00.00**

SCALE: 1"=20'  
DATE: JANUARY 16, 2009

DRAWN BY: AMB, MAF  
CHECKED BY: TGB, MI

P:\0237\31\road\2260\pp\62977.dwg 1/15/2009 10:52:28 AM