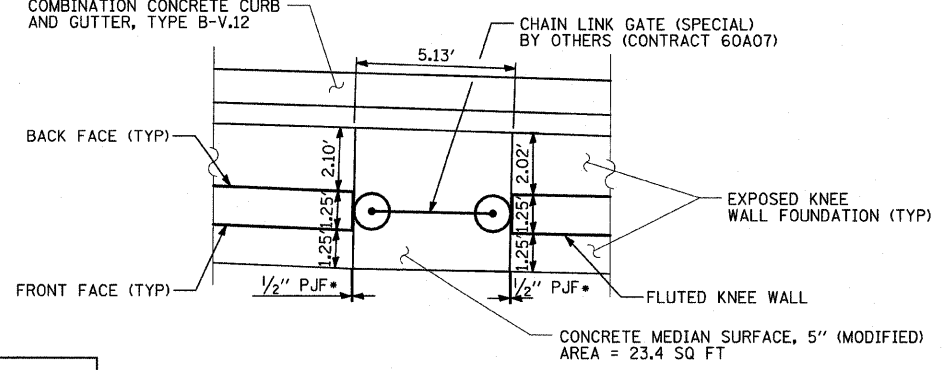
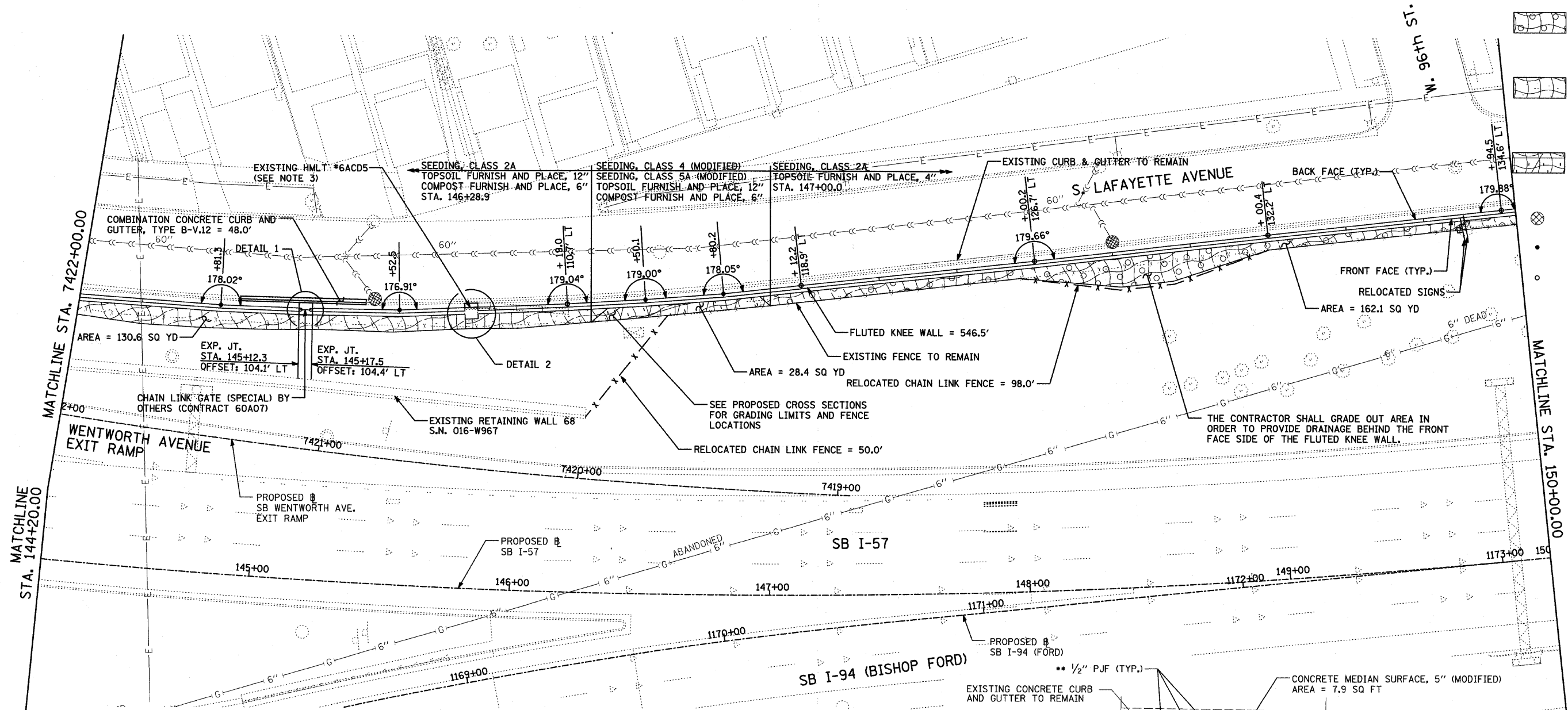


F.A.I. RTE.	SECTION	COUNTY	TOTAL SHEETS	SHEET NO.
94	1516.1 I-9	COOK	59	27
117+38.11 (SB I-57) TO STA. 154+00.94 (SB I-57)		STA. 218+96.72 (NB I-57) TO STA. 225+79.12 (NB I-57)		
FED. ROAD DIST. NO.		ILLINOIS FED. AID PROJECT		

62977

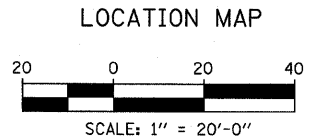
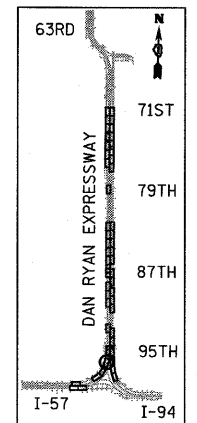
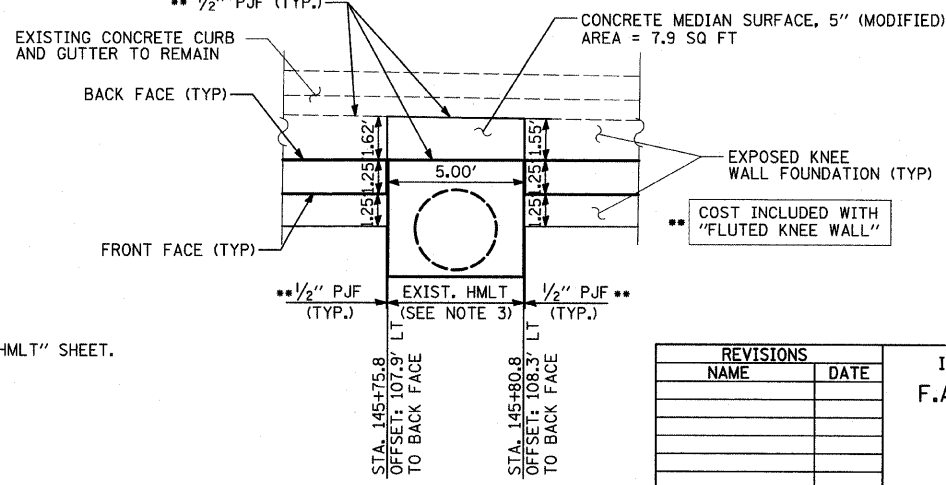
LEGEND:

- EROSION CONTROL BLANKET, SEEDING, CLASS 2A, NITROGEN, PHOSPHORUS, AND POTASSIUM FERTILIZER NUTRIENTS, TOPSOIL FURNISH AND PLACE, 4"
- EROSION CONTROL BLANKET, SEEDING, CLASS 2A, NITROGEN, PHOSPHORUS, AND POTASSIUM FERTILIZER NUTRIENTS, TOPSOIL FURNISH AND PLACE, 12" COMPOST FURNISH AND PLACE, 6"
- EROSION CONTROL BLANKET, SEEDING, CLASS 4 (MODIFIED), SEEDING, CLASS 5A (MODIFIED), TOPSOIL FURNISH AND PLACE, 12" COMPOST FURNISH AND PLACE, 6"
- INLET FILTER
- CONSTRUCTION JOINT AT FLUTED KNEE WALL BEND
- EXPANSION JOINT



NOTES:

1. STATION OFFSET CALLOUTS ALONG THE LENGTH OF EITHER FLUTED KNEE WALL OR FLUTED KNEE WALL, SPECIAL ARE TAKEN FROM THE BACK FACE SIDE AT PROPOSED EXPANSION JOINT LOCATIONS.
2. THE CONTRACTOR SHALL PROTECT AND USE CAUTION DURING CONSTRUCTION OPERATIONS AROUND ALL EXISTING UTILITY FACILITIES.
3. FOR DETAILS, SEE "FLUTED KNEE WALL AT HMLT" SHEET.



REVISIONS	
NAME	DATE

ILLINOIS DEPARTMENT OF TRANSPORTATION
 F.A.I. 94 (DAN RYAN EXPRESSWAY)
PROPOSED PLAN
 SB I-57
 STA. 144+20.00 TO 150+00.00

SCALE: 1"=20'
 DATE: JANUARY 16, 2009

DRAWN BY: AMB, MAF
 CHECKED BY: TGB, MI

TYLIN INTERNATIONAL

DETAIL 1
 -THE ANGLE BETWEEN SECTIONS OF THE FLUTED KNEE WALL ADJACENT TO THE GATE IS 178.63°

* COST INCLUDED WITH "CONCRETE MEDIAN SURFACE, 5" (MODIFIED)".

1/15/2009 10:45:34 AM