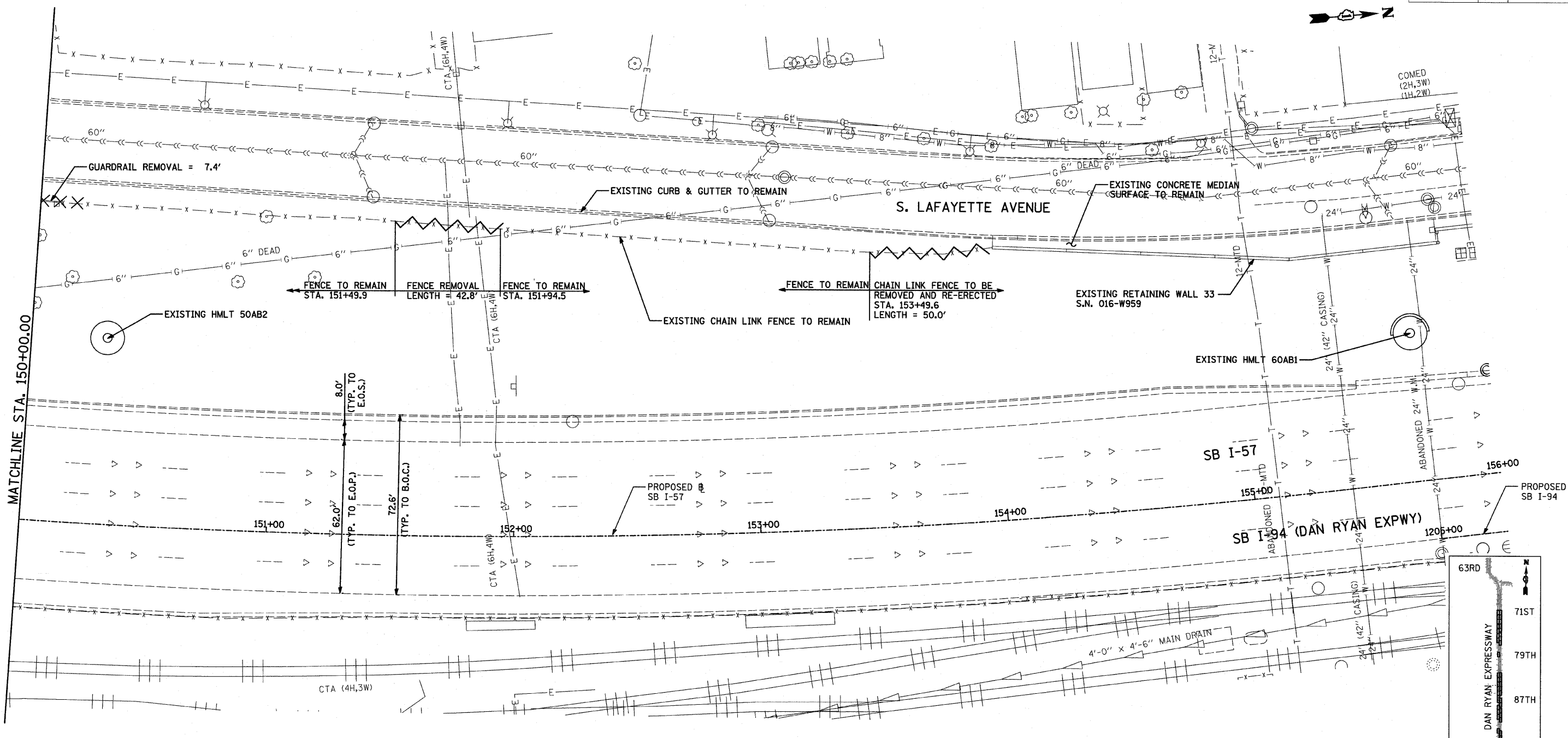


F.A.I. RTE.	SECTION	COUNTY	TOTAL SHEETS	SHEET NO.
94	1516.1 I-9	COOK	59	28
STA. 117+38.11 (SB I-57) TO STA. 154+09.94 (SB I-57)		STA. 218+95.72 (NB I-57) TO STA. 225+79.12 (NB I-57)		
FED. ROAD DIST. NO.	ILLINOIS	FED. AID PROJECT		

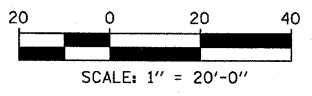
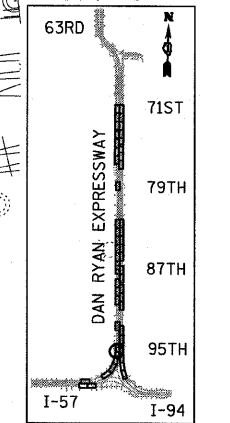
62977



**LEGEND:**

	PAVED SHOULDER REMOVAL
	CHAIN LINK FENCE REMOVAL
	CONCRETE BARRIER/GUARDRAIL REMOVAL
	TREE REMOVAL (UNITS) (NO UNIT SHOWN = <6)

**NOTE:**  
 SIGNS SHALL BE RELOCATED AT A MINIMUM OF 3 FEET FROM THE FRONT FACE OF THE PROPOSED KNEE WALL. EXACT PLACEMENT SHALL BE DETERMINED BY THE ENGINEER. PAID FOR AS "RELOCATE EXISTING SIGN PANEL, SPECIAL".



**REVISIONS**

NAME	DATE

ILLINOIS DEPARTMENT OF TRANSPORTATION  
 F.A.I. 94 (DAN RYAN EXPRESSWAY)  
 REMOVAL PLAN  
 SB I-57  
 STA. 150+00.00 TO 156+00.00

SCALE: 1"=20'  
 DATE: JANUARY 16, 2009

DRAWN BY: AMB, MAF  
 CHECKED BY: TGB, MI

**TYLIN** INTERNATIONAL

1/15/2009 10:51:05 AM