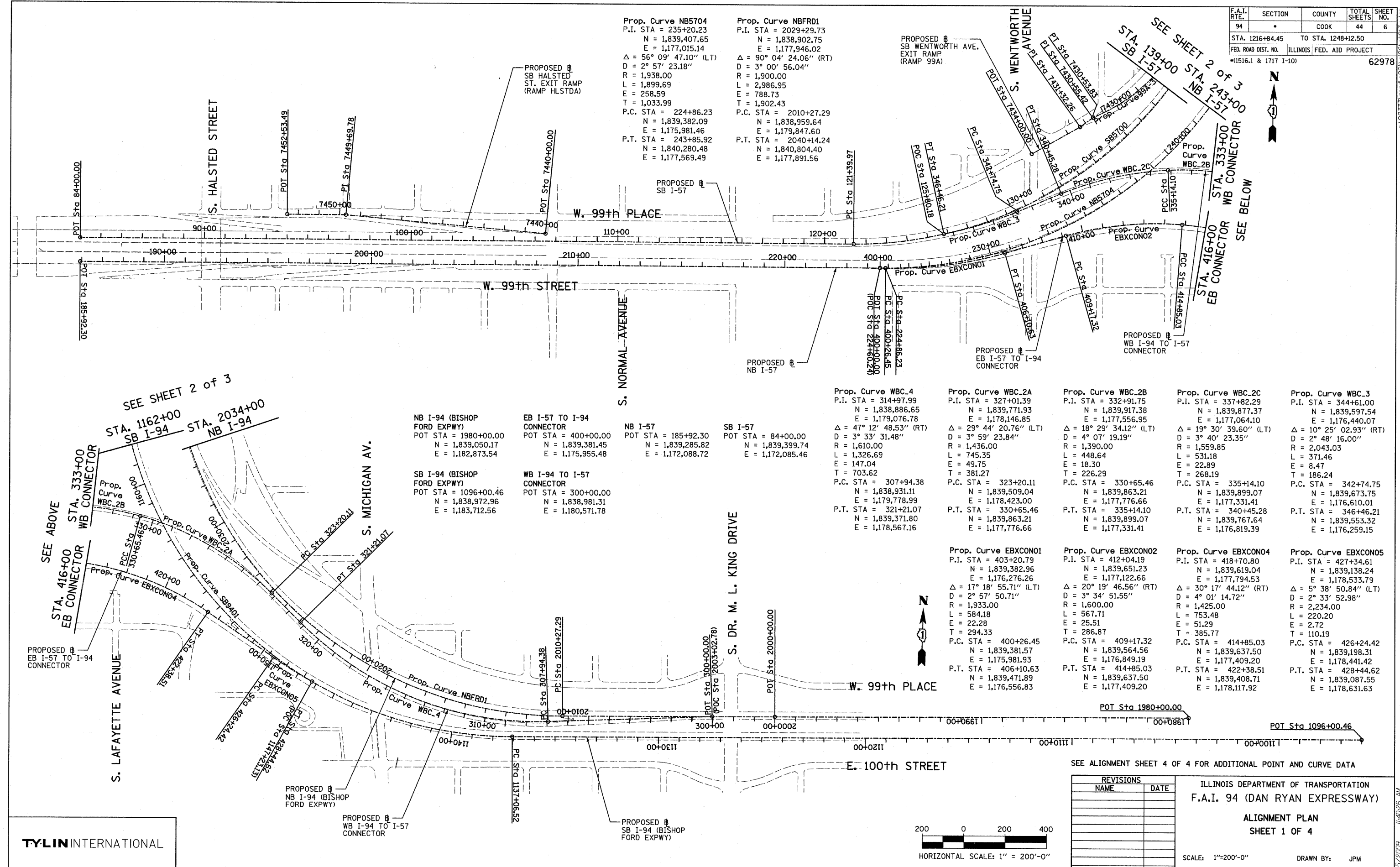


F.A.I. RTE.	SECTION	COUNTY	TOTAL SHEETS	SHEET NO.
94	•	COOK	44	6
STA. 1216+84.45		TO STA. 1248+12.50		
FED. ROAD DIST. NO.		ILLINOIS FED. AID PROJECT		
(1516.1 & 1717 I-10)		62978		



Prop. Curve NB5704
P.I. STA = 235+20.23
N = 1,839,407.65
E = 1,177,015.14
Δ = 56° 09' 47.10" (LT)
D = 2° 57' 23.18"
R = 1,938.00
L = 1,899.69
E = 258.59
T = 1,033.99
P.C. STA = 224+86.23
N = 1,839,382.09
E = 1,175,981.46
P.T. STA = 243+85.92
N = 1,840,280.48
E = 1,177,569.49

Prop. Curve NBFRD1
P.I. STA = 2029+29.73
N = 1,838,902.75
E = 1,177,946.02
Δ = 90° 04' 24.06" (RT)
D = 3° 00' 56.04"
R = 1,900.00
L = 2,986.95
E = 788.73
T = 1,902.43
P.C. STA = 2010+27.29
N = 1,838,959.64
E = 1,179,847.60
P.T. STA = 2040+14.24
N = 1,840,804.40
E = 1,177,891.56

NB I-94 (BISHOP FORD EXPWY)
POT STA = 1980+00.00
N = 1,839,050.17
E = 1,182,873.54

EB I-57 TO I-94 CONNECTOR
POT STA = 400+00.00
N = 1,839,381.45
E = 1,175,955.48

NB I-57
POT STA = 185+92.30
N = 1,839,285.82
E = 1,172,088.72

SB I-94 (BISHOP FORD EXPWY)
POT STA = 1096+00.46
N = 1,838,972.96
E = 1,183,712.56

WB I-94 TO I-57 CONNECTOR
POT STA = 300+00.00
N = 1,838,981.31
E = 1,180,571.78

Prop. Curve WBC_4
P.I. STA = 314+97.99
N = 1,838,886.65
E = 1,179,076.78
Δ = 47° 12' 48.53" (RT)
D = 3° 33' 31.48"
R = 1,610.00
L = 1,326.69
E = 147.04
T = 703.62
P.C. STA = 307+94.38
N = 1,838,931.11
E = 1,179,778.99
P.T. STA = 321+21.07
N = 1,839,371.80
E = 1,178,567.16

Prop. Curve WBC_2A
P.I. STA = 327+01.39
N = 1,839,771.93
E = 1,178,146.85
Δ = 29° 44' 20.76" (LT)
D = 3° 59' 23.84"
R = 1,436.00
L = 745.35
E = 49.75
T = 381.27
P.C. STA = 323+20.11
N = 1,839,509.04
E = 1,178,423.00
P.T. STA = 330+65.46
N = 1,839,863.21
E = 1,177,776.66

Prop. Curve WBC_2B
P.I. STA = 332+91.75
N = 1,839,917.38
E = 1,177,556.95
Δ = 18° 29' 34.12" (LT)
D = 4° 07' 19.19"
R = 1,390.00
L = 448.64
E = 18.30
T = 226.29
P.C. STA = 330+65.46
N = 1,839,863.21
E = 1,177,776.66
P.T. STA = 335+14.10
N = 1,839,899.07
E = 1,177,331.41

Prop. Curve WBC_2C
P.I. STA = 337+82.29
N = 1,839,877.37
E = 1,177,064.40
Δ = 19° 30' 39.60" (LT)
D = 3° 40' 23.35"
R = 1,559.85
L = 531.18
E = 22.89
T = 268.19
P.C. STA = 335+14.10
N = 1,839,899.07
E = 1,177,331.41
P.T. STA = 340+45.28
N = 1,839,767.64
E = 1,176,819.39

Prop. Curve WBC_3
P.I. STA = 344+61.00
N = 1,839,597.54
E = 1,176,440.07
Δ = 10° 25' 02.93" (RT)
D = 2° 48' 16.00"
R = 2,043.03
L = 371.46
E = 8.47
T = 186.24
P.C. STA = 342+74.75
N = 1,839,673.75
E = 1,176,610.01
P.T. STA = 346+46.21
N = 1,839,553.32
E = 1,176,259.15

Prop. Curve EBXC01
P.I. STA = 403+20.79
N = 1,839,382.96
E = 1,176,276.26
Δ = 17° 18' 55.71" (LT)
D = 2° 57' 50.71"
R = 1,933.00
L = 584.18
E = 22.28
T = 294.33
P.C. STA = 400+26.45
N = 1,839,381.57
E = 1,175,981.93
P.T. STA = 406+10.63
N = 1,839,471.89
E = 1,176,556.83

Prop. Curve EBXC02
P.I. STA = 412+04.19
N = 1,839,651.23
E = 1,177,122.66
Δ = 20° 19' 46.56" (RT)
D = 3° 34' 51.55"
R = 1,600.00
L = 753.48
E = 25.51
T = 385.77
P.C. STA = 409+17.32
N = 1,839,564.56
E = 1,176,849.19
P.T. STA = 414+85.03
N = 1,839,637.50
E = 1,178,117.92

Prop. Curve EBXC04
P.I. STA = 418+70.80
N = 1,839,619.04
E = 1,177,794.53
Δ = 30° 17' 44.12" (RT)
D = 4° 01' 14.72"
R = 1,425.00
L = 753.48
E = 51.29
T = 385.77
P.C. STA = 414+85.03
N = 1,839,637.50
E = 1,177,409.20
P.T. STA = 422+38.51
N = 1,839,408.71
E = 1,178,117.92

Prop. Curve EBXC05
P.I. STA = 427+34.61
N = 1,839,138.24
E = 1,178,533.79
Δ = 5° 38' 50.84" (LT)
D = 2° 33' 52.98"
R = 2,234.00
L = 220.20
E = 2.72
T = 110.19
P.C. STA = 426+24.42
N = 1,839,198.31
E = 1,178,441.42
P.T. STA = 428+44.62
N = 1,839,087.55
E = 1,178,631.63

SEE SHEET 2 of 3
STA. 1162+00
SB I-94
STA. 2034+00
NB I-94

SEE ALIGNMENT SHEET 4 OF 4 FOR ADDITIONAL POINT AND CURVE DATA

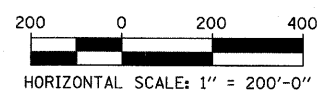
REVISIONS	
NAME	DATE

ILLINOIS DEPARTMENT OF TRANSPORTATION
F.A.I. 94 (DAN RYAN EXPRESSWAY)

ALIGNMENT PLAN
SHEET 1 OF 4

SCALE: 1"=200'-0"
DATE: JANUARY 16, 2009

DRAWN BY: JPM
CHECKED BY: DAK



TYLIN INTERNATIONAL