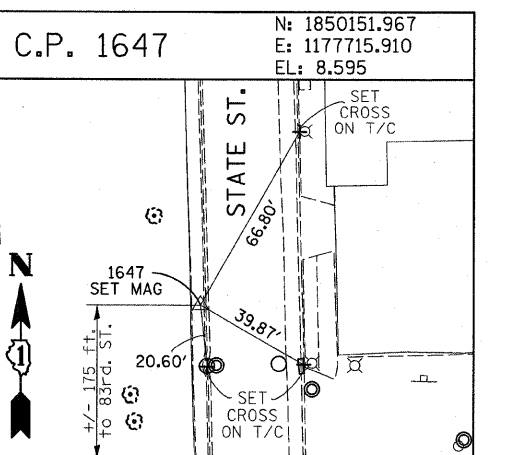
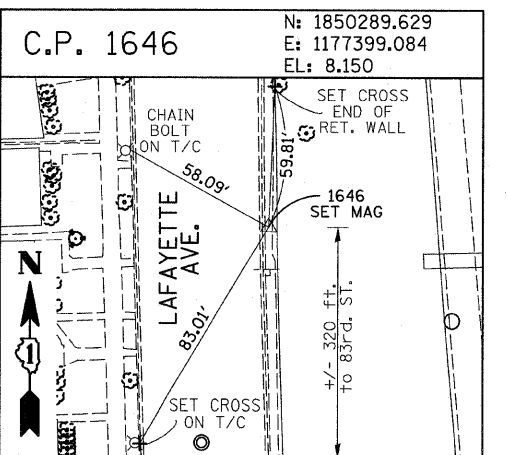
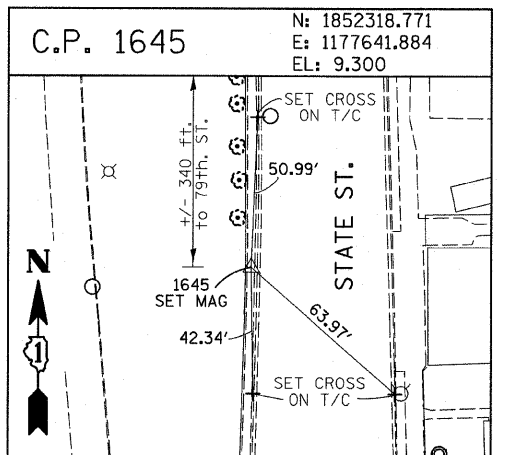
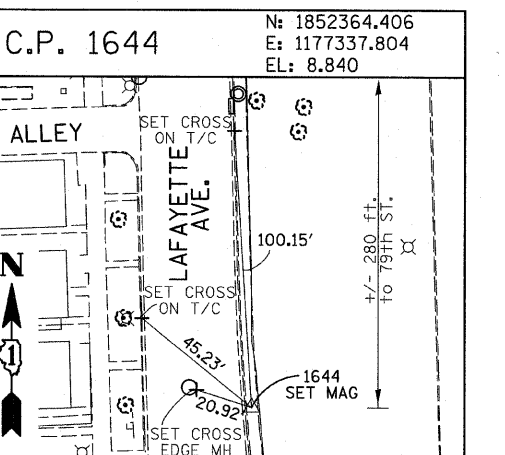
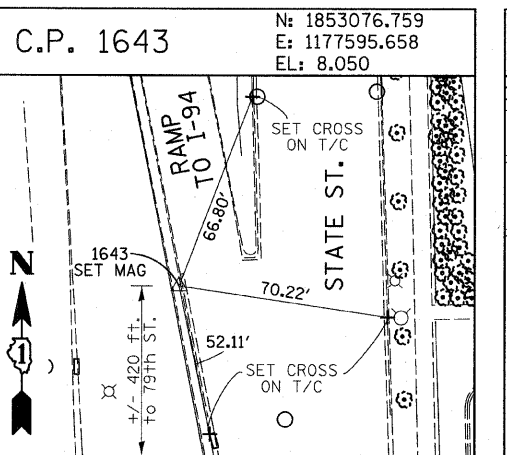
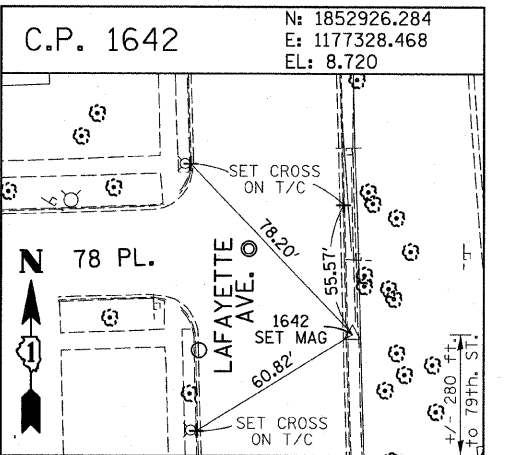
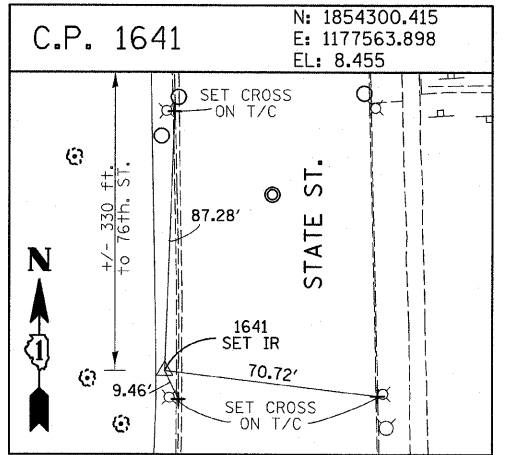
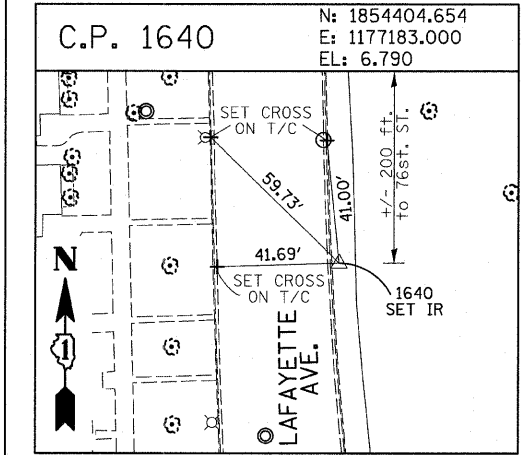
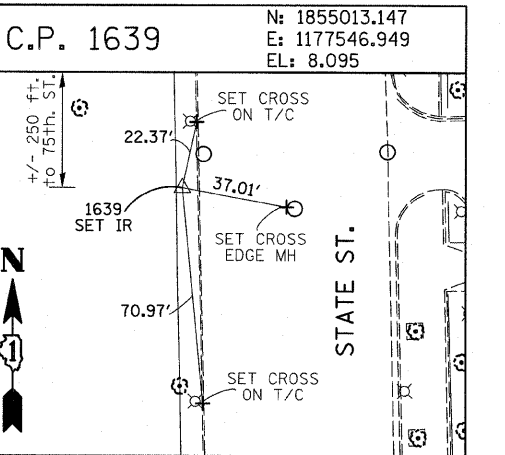
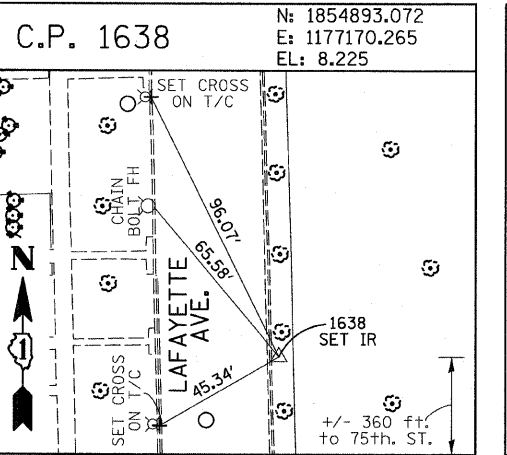
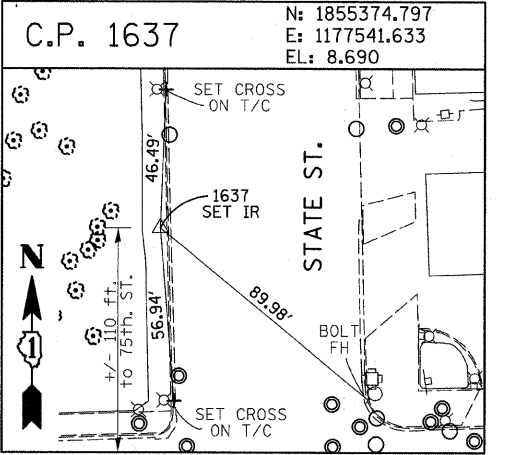
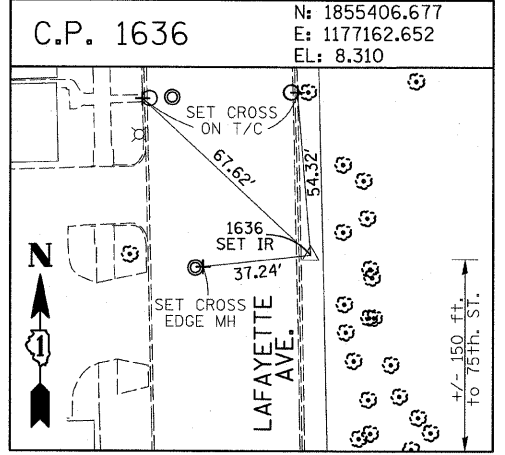
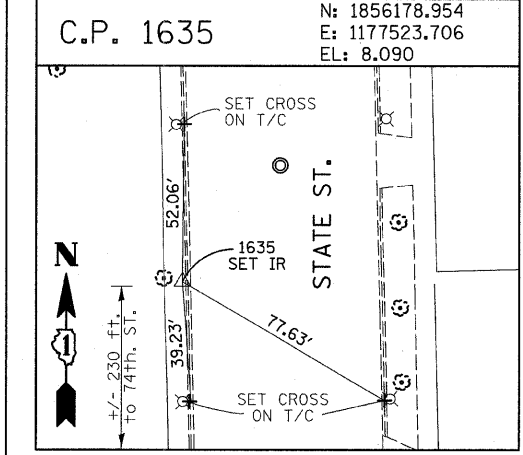
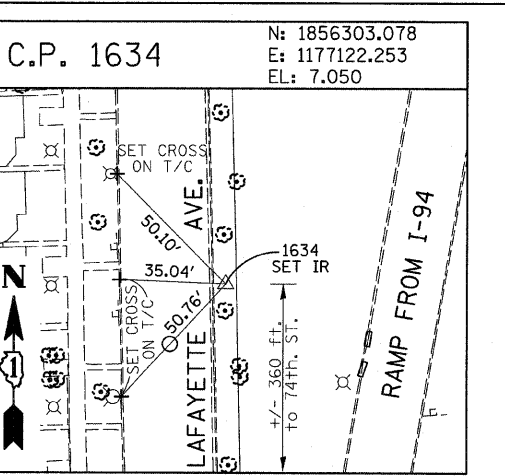
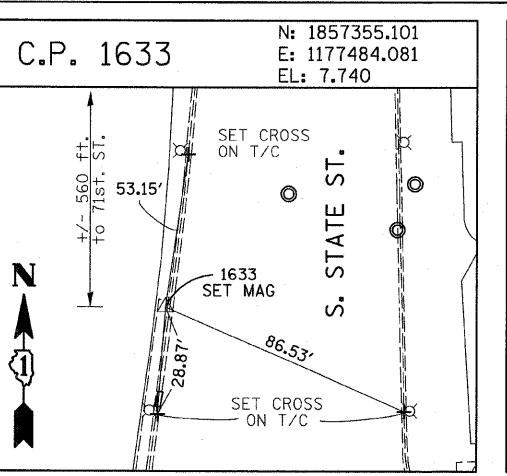
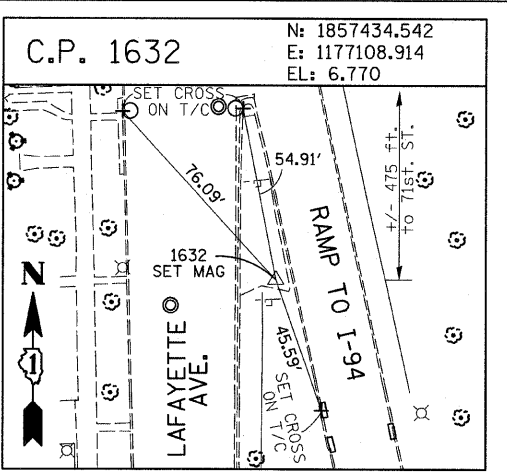
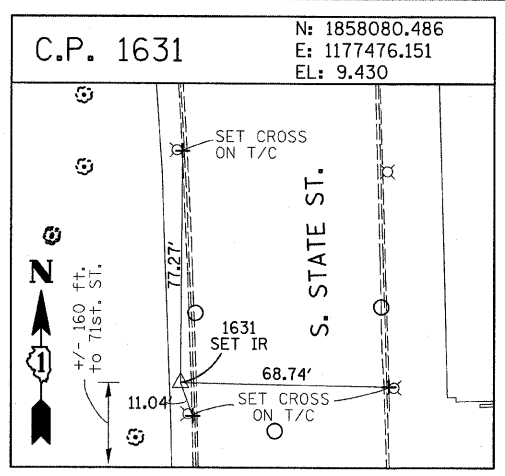
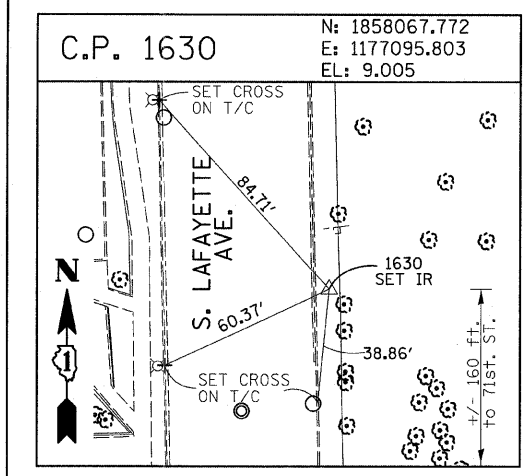


F.A.I. RTE.	SECTION	COUNTY	TOTAL SHEETS	SHEET NO.
94	*	COOK	44	12
STA. 1216+84.45		TO STA. 1248+12.50		
FED. ROAD DIST. NO.		ILLINOIS FED. AID PROJECT		
*1516.1 & 1717 I-10)		62978		



American Surveying Consultants, P.C.
 1157 Pine St., Suite 200, Chicago, IL 60601
 312-467-4231

REVISIONS	
NAME	DATE

ILLINOIS DEPARTMENT OF TRANSPORTATION
 F.A.I. 94 (DAN RYAN EXPRESSWAY)
 SURVEY TIES FOR CONTROL POINTS
 SHEET 3 OF 7

SCALE: 1"=30'
 DATE: JANUARY 16, 2009

DRAWN BY: GSP
 CHECKED BY: MMW

1/15/2009 11:40:31 AM