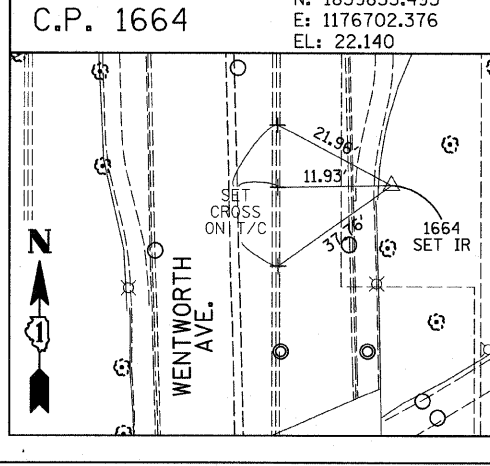
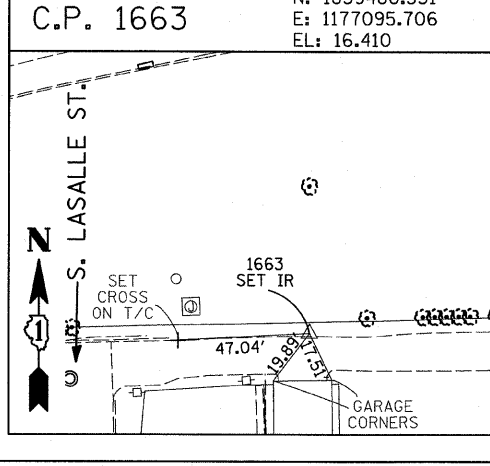
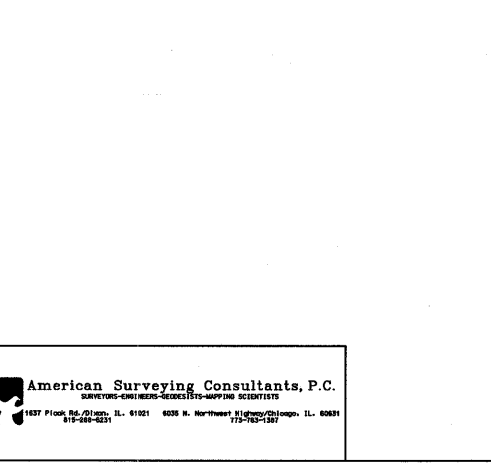
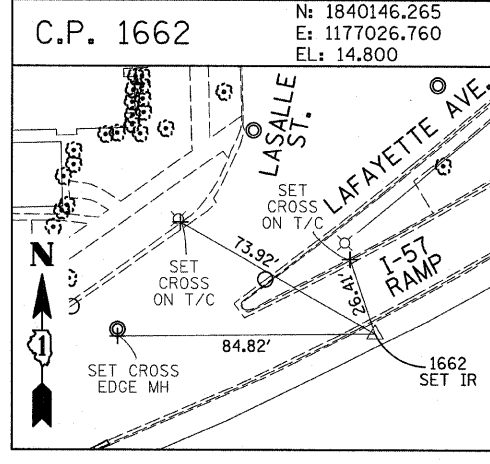
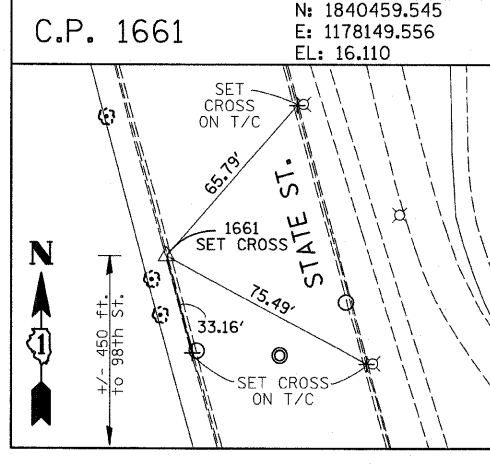
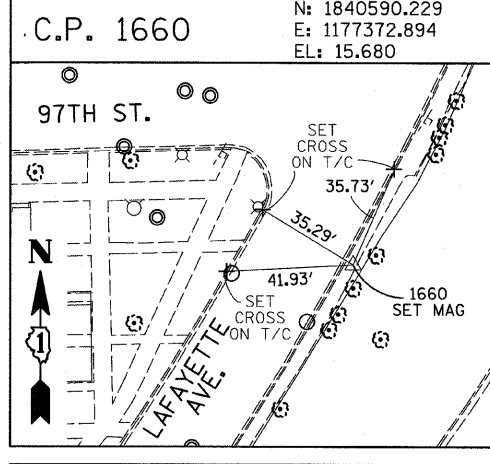
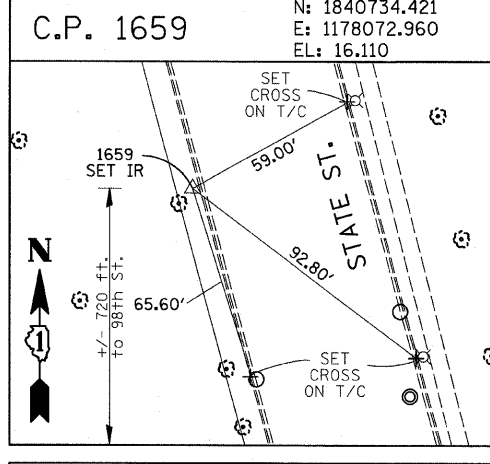
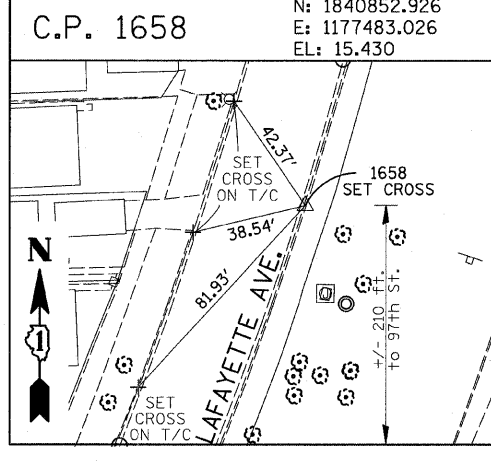
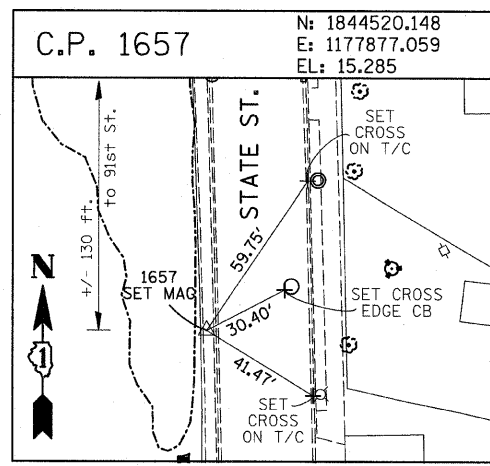
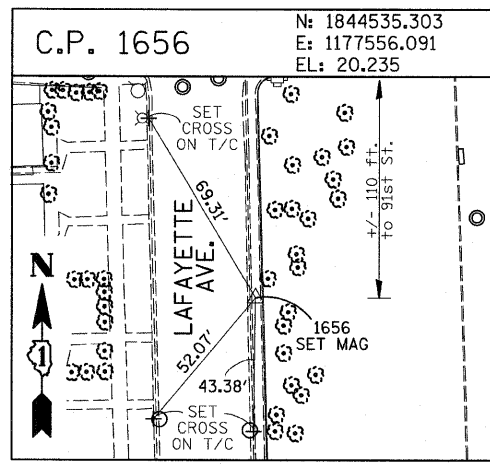
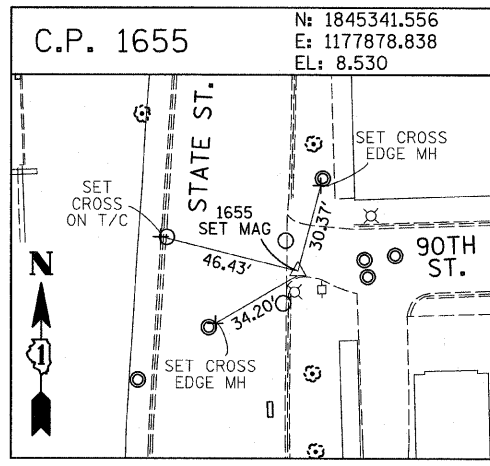
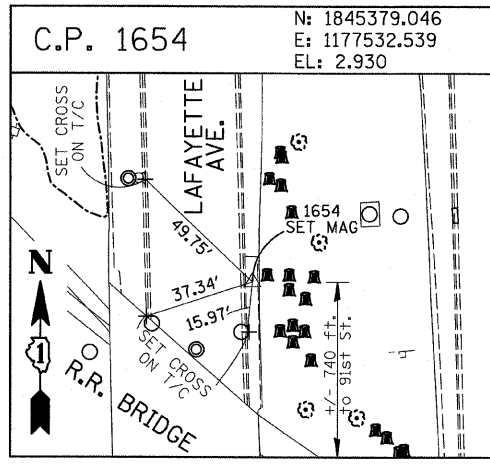
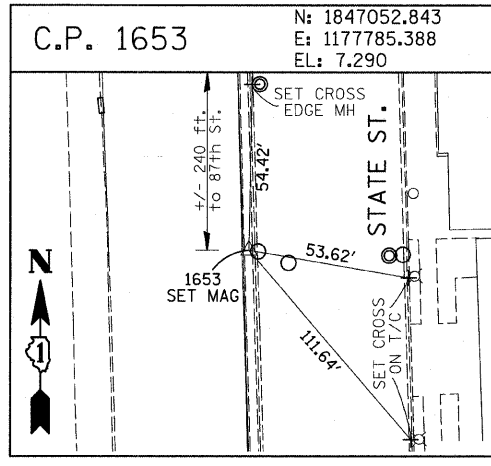
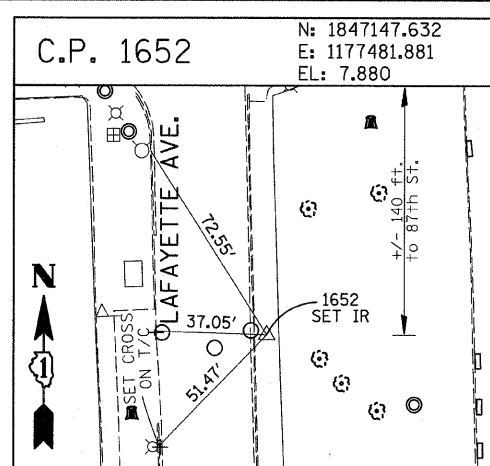
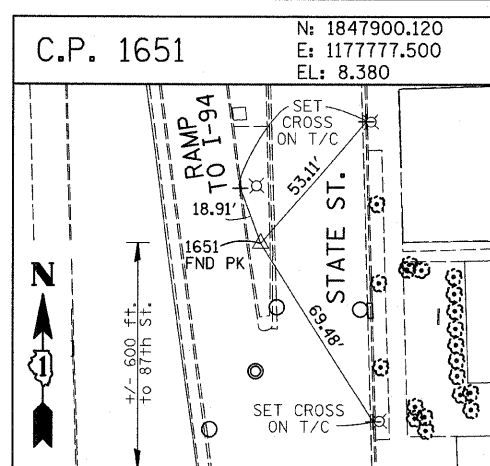
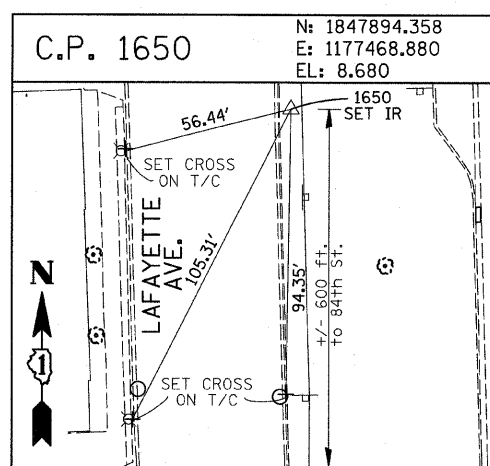
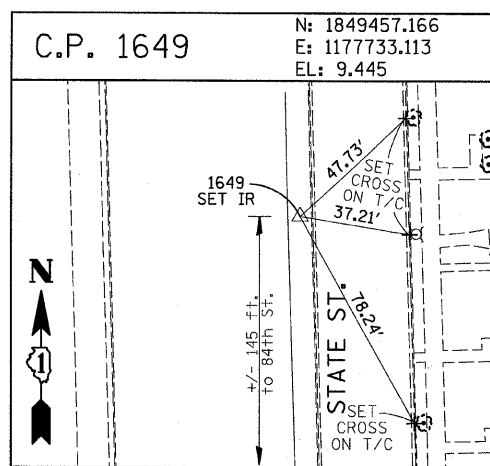
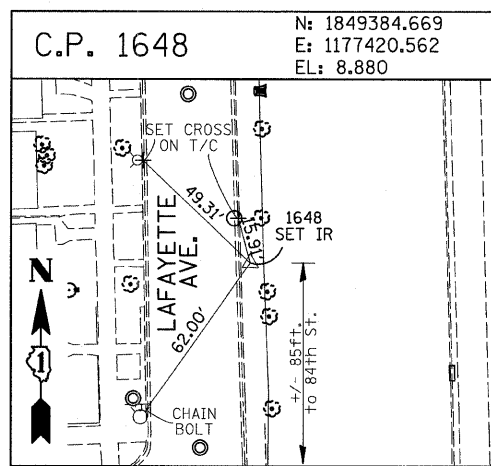


F.A.I. RTE.	SECTION	COUNTY	TOTAL SHEETS	SHEET NO.
94		COOK	44	13
STA. 1216+84.45		TO STA. 1248+12.50		
FED. ROAD DIST. NO.		ILLINOIS FED. AID PROJECT		
*1516.1 & 1717 I-10)		62978		



American Surveying Consultants, P.C.
 1437 Piquette Rd., Chicago, IL 60641
 312-467-4231

REVISIONS	
NAME	DATE

ILLINOIS DEPARTMENT OF TRANSPORTATION
 F.A.I. 94 (DAN RYAN EXPRESSWAY)
 SURVEY TIES FOR CONTROL POINTS
 SHEET 4 OF 7

SCALE: 1"=30'
 DATE: JANUARY 16, 2009
 DRAWN BY: GSP
 CHECKED BY: MMW

P:\0237\3\road\2660\1266\08\36.dgn
 1/15/2009 11:40:33 AM