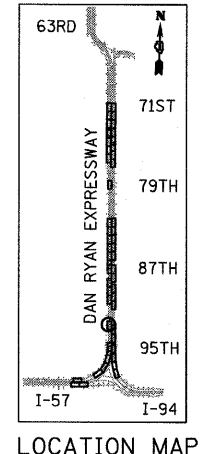
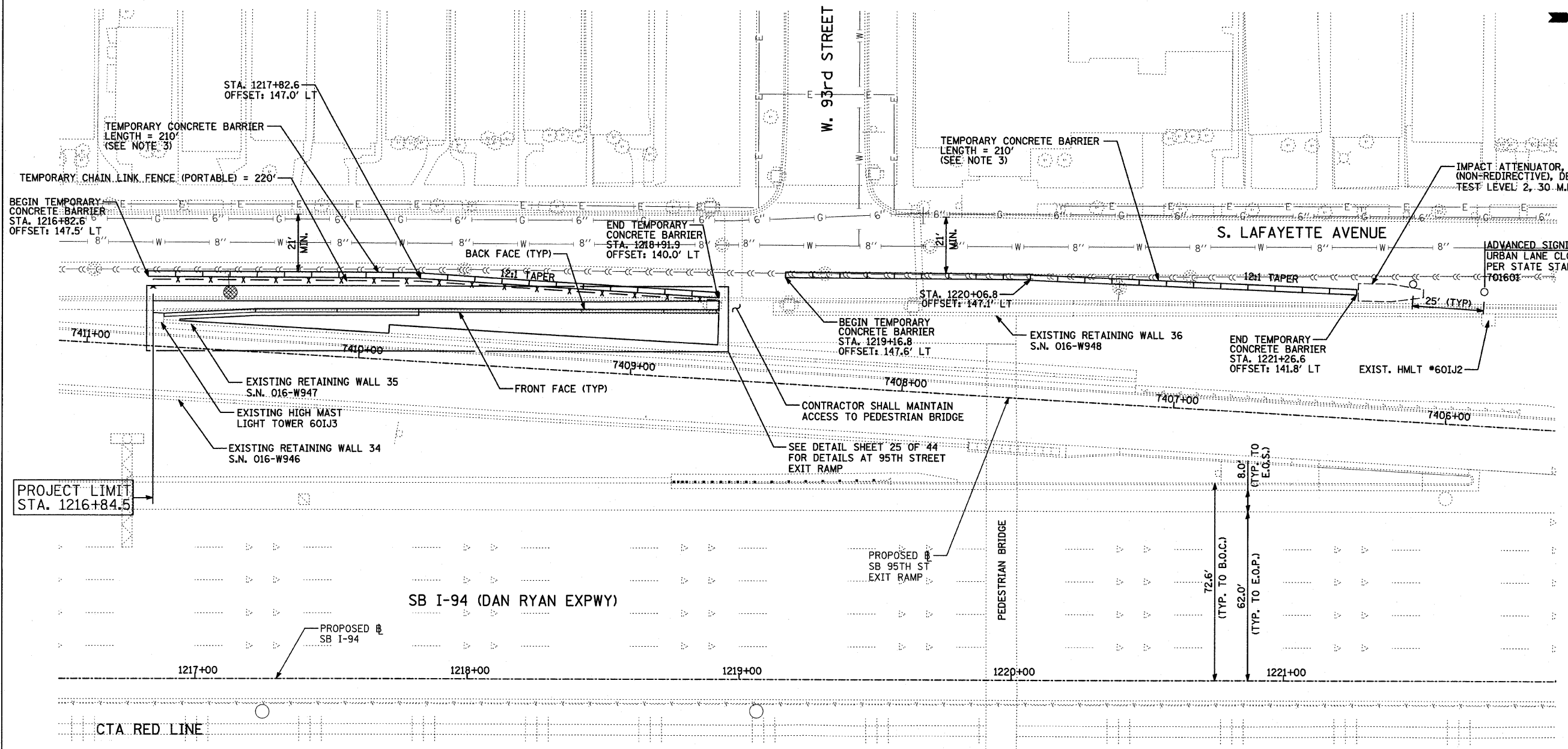
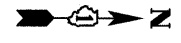

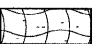




F.A.I. RTE.	SECTION	COUNTY	TOTAL SHEETS	SHEET NO.
94		COOK	44	18
STA. 1216+84.45		TO STA. 1248+12.50		
FED. ROAD DIST. NO.		ILLINOIS	FED. AID PROJECT	
*(1516.1 & 1717 I-10)				62978

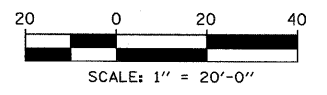


LEGEND:

-  EROSION CONTROL BLANKET, SEEDING, CLASS 2A, NITROGEN, PHOSPHORUS, AND POTASSIUM FERTILIZER NUTRIENTS, TOPSOIL FURNISH AND PLACE, 4"
-  EROSION CONTROL BLANKET, SEEDING, CLASS 2A, NITROGEN, PHOSPHORUS, AND POTASSIUM FERTILIZER NUTRIENTS, TOPSOIL FURNISH AND PLACE, 12" COMPOST FURNISH AND PLACE, 6"
-  EROSION CONTROL BLANKET, SEEDING, CLASS 4 (MODIFIED), SEEDING, CLASS 5A (MODIFIED), TOPSOIL FURNISH AND PLACE, 12" COMPOST FURNISH AND PLACE, 6"
-  INLET FILTER

NOTES:

1. STATION AND OFFSET CALLOUTS ALONG THE LENGTH OF EITHER FLUTED KNEE WALL OR FLUTED KNEE WALL, SPECIAL ARE TAKEN FROM THE BACK FACE SIDE AT PROPOSED EXPANSION JOINT LOCATIONS.
2. THE CONTRACTOR SHALL PROTECT AND USE CAUTION DURING CONSTRUCTION OPERATIONS AROUND ALL EXISTING PUBLIC OR PRIVATE UTILITY FACILITIES.
3. TEMPORARY CONCRETE BARRIER SHALL NOT BE REMOVED UNTIL ALL CONSTRUCTION OPERATIONS HAVE BEEN COMPLETED OR AS DIRECTED BY THE ENGINEER



REVISIONS	
NAME	DATE

ILLINOIS DEPARTMENT OF TRANSPORTATION
 F.A.I. 94 (DAN RYAN EXPRESSWAY)
 PROPOSED PLAN
 SB I-94 (I-94 DAN RYAN EXPWY)
 STA. 1216+50.00 TO STA. 1222+00.00

SCALE: 1"=20'
 DATE: JANUARY 16, 2009

DRAWN BY: AMB, MAF, TB
 CHECKED BY: TGB, MI

COST INCLUDED WITH "CONCRETE MEDIAN SURFACE, 5 INCH (MODIFIED)"

TYLIN INTERNATIONAL

1/15/2009 11:49:48 AM