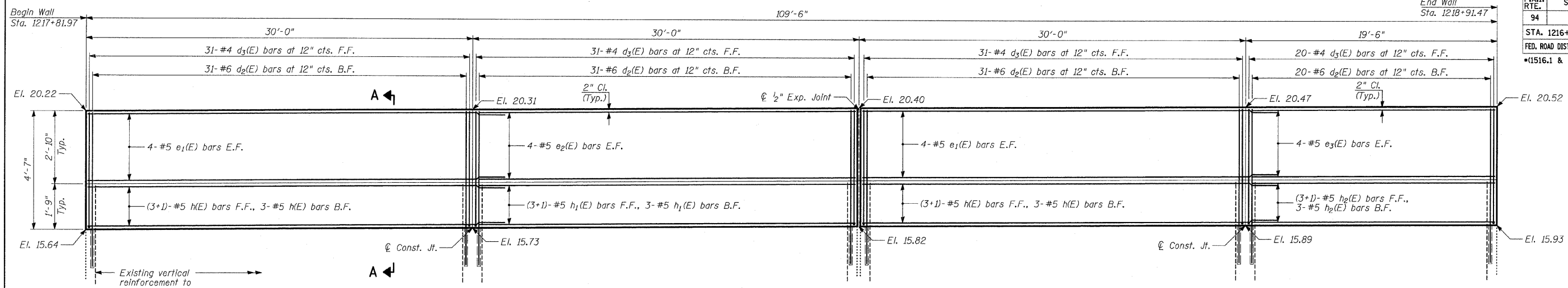
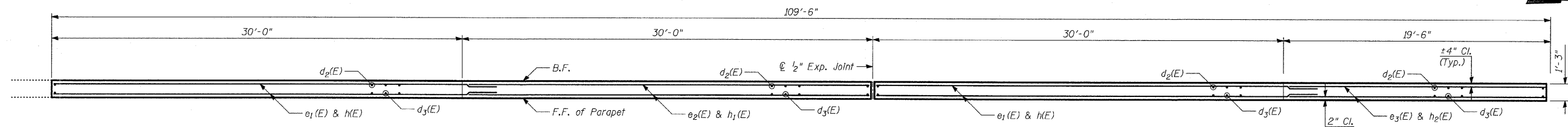


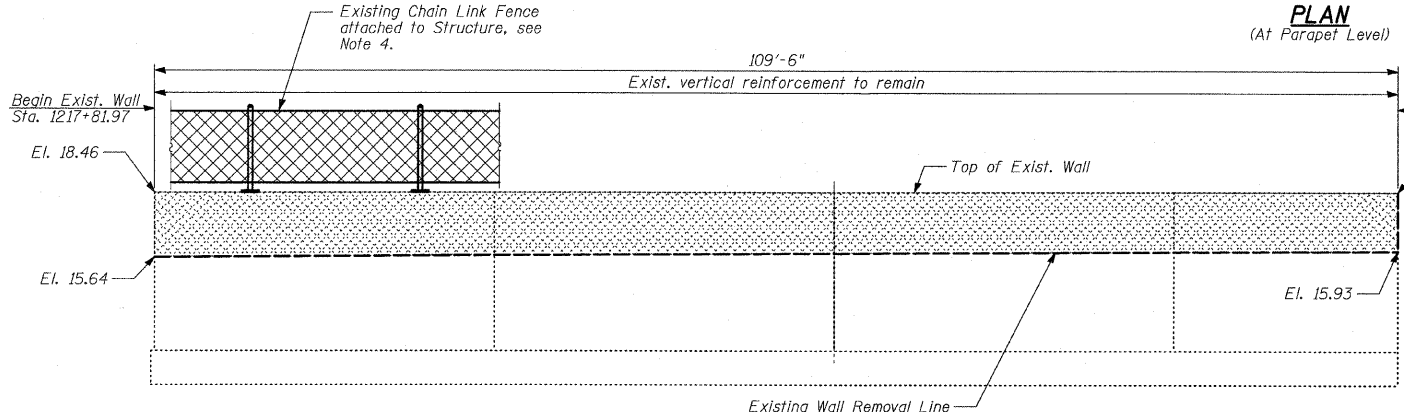
F.A.I. RTE.	SECTION	COUNTY	TOTAL SHEETS	SHEET NO.
94	•	COOK	44	30
STA. 1216+84.45		TO STA. 1248+12.50		
FED. ROAD DIST. NO.		ILLINOIS		FED. AID PROJECT
•(1516.1 & 1717 1-10)		62978		



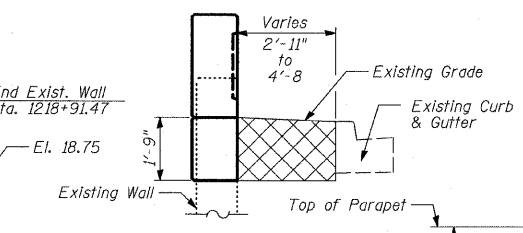
FRONT FACE ELEVATION - FLUTED PARAPET



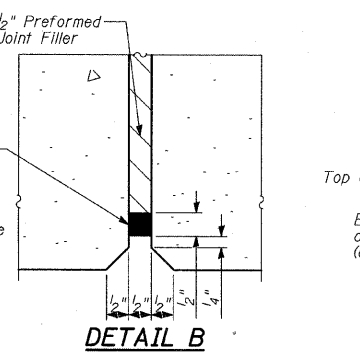
PLAN (At Parapet Level)



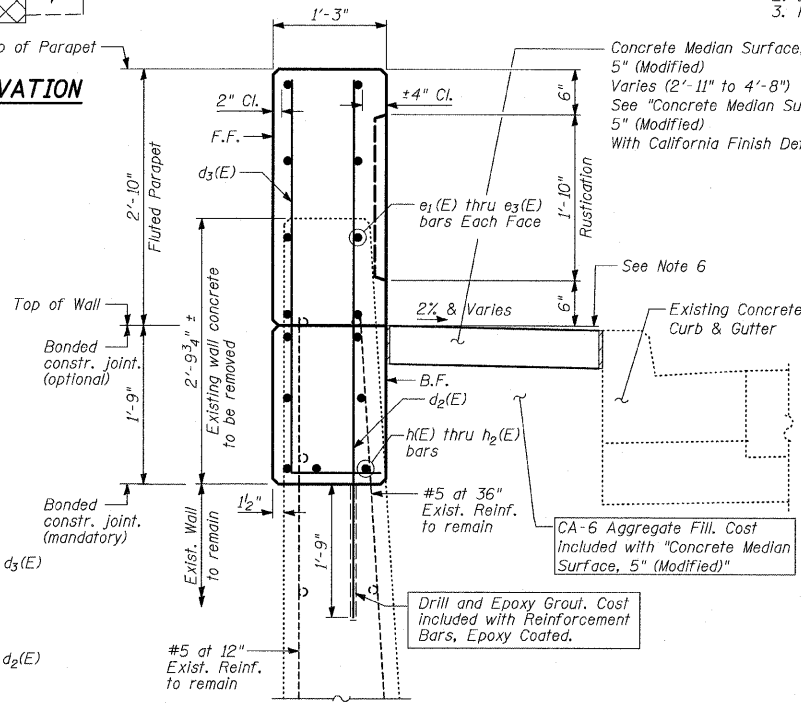
LIMITS OF REMOVAL OF EXISTING STRUCTURE



STRUCTURE EXCAVATION



DETAIL B



SECTION A-A

(Sta. 1217+81.97 to Sta. 1218+91.47)

- NOTES:**
1. B.F. - denotes Back Face.
 2. E.F. - denotes Each Face.
 3. F.F. - denotes Front Face.

BILL OF MATERIAL

Bar	No.	Size	Length	Shape
d2(E)	113	#6	6'-2"	—
d3(E)	113	#4	5'-3"	L
e1(E)	16	#5	32'-2"	—
e2(E)	8	#5	29'-8"	—
e3(E)	8	#5	19'-2"	—
h(E)	14	#5	32'-2"	—
h1(E)	7	#5	29'-8"	—
h2(E)	7	#5	19'-2"	—
Concrete Removal			CU YD	13
Structure Excavation			CU YD	27
Concrete Superstructure			CU YD	24
Protective Coat			SQ YD	106
Rustication Finish			SQ FT	199
Reinforcement Bars, Epoxy Coated			POUND	3,220

Reinforcement bars designated (E) shall be epoxy coated.

LAP SPLICES

Bar	Lap
#4	1'-8"
#5	2'-2"
#6	2'-7"

NOTES:

1. Remove existing wall to elevations shown. Existing vertical reinforcement shall be cleaned and incorporated into the new construction. Cost included with "Concrete Removal". The existing horizontal bars shall be removed as required.
2. Existing vertical reinforcement bars that are damaged during concrete removal operations at the top of the existing walls shall be repaired or replaced using approved bar splicer or anchorage system. Cost included with "Concrete Removal."
3. See Kneewall Detail Sheets for Rustication Finish Details.
4. Cost of removal of existing chain link fence attached to structure to be included with "Concrete Removal".
5. Drill and epoxy grout d2(e) bars according to Article 584 of the Standard Specifications. The cost shall be included with "Reinforcement Bars Epoxy Coated".
6. The top edge of Knee Wall Footing or Concrete Median Surface, 5" (Modified) shall be 3/8" higher than the top of Existing Curb to account for future settlement.
7. All existing wall elevations shown are to be verified in the field.
8. Protective Coat shall be applied to all exposed Fluted Knee Wall surface.

LEGEND

- Concrete Removal
- Structure Excavation

TYLIN INTERNATIONAL

TYPICAL CROSS-SECTION

EXPANSION JOINT DETAILS

REVISIONS	
NAME	DATE

ILLINOIS DEPARTMENT OF TRANSPORTATION
F.A.I. 94 (DAN RYAN EXPRESSWAY)
PARAPET RECONSTRUCTION
ALONG LAFAYETTE AVE. TO S. OF 93RD STREET
PLAN AND ELEVATION
STA. 1217+82.00 TO STA. 1218+91.50
 S.N. DESIGNED BY: MI, TB
 SCALE: N.T.S. DRAWN BY: TB
 DATE: JANUARY 16, 2009 CHECKED BY: MI

1/15/2009