

INDEX OF SHEETS

FOR INDEX OF SHEETS, SEE SHEET NO. 2

| DAN RYAN EXPRESSWAY: | ADT (2010) | DESIGN SPEED | POSTED SPEED |
|----------------------------------|------------|--------------|--------------|
| SB I-94 (DAN RYAN) | 140,500 | 60 MPH | 55 MPH |
| SB 71ST STREET C-D ENTRANCE RAMP | 8,100 | 45 MPH | 40 MPH |
| SB 75TH STREET C-D EXIT RAMP | 8,000 | 45 MPH | 40 MPH |

| MAJOR CROSS STREETS AND FRONTAGE ROADS: | ADT | POSTED SPEED |
|---|--------|--------------|
| 71ST STREET | 15,600 | 30 MPH |
| S. LAFAYETTE AVENUE | 6,800 | 30 MPH |

DESCRIPTION OF PROJECT

CONSTRUCTION OF FLUTED KNEE WALLS LOCATED WITHIN THE PROJECT LIMITS.

STATE OF ILLINOIS
DEPARTMENT OF TRANSPORTATION
DIVISION OF HIGHWAYS

PROPOSED HIGHWAY PLANS

F.A.I. ROUTE 94 (DAN RYAN EXPRESSWAY)

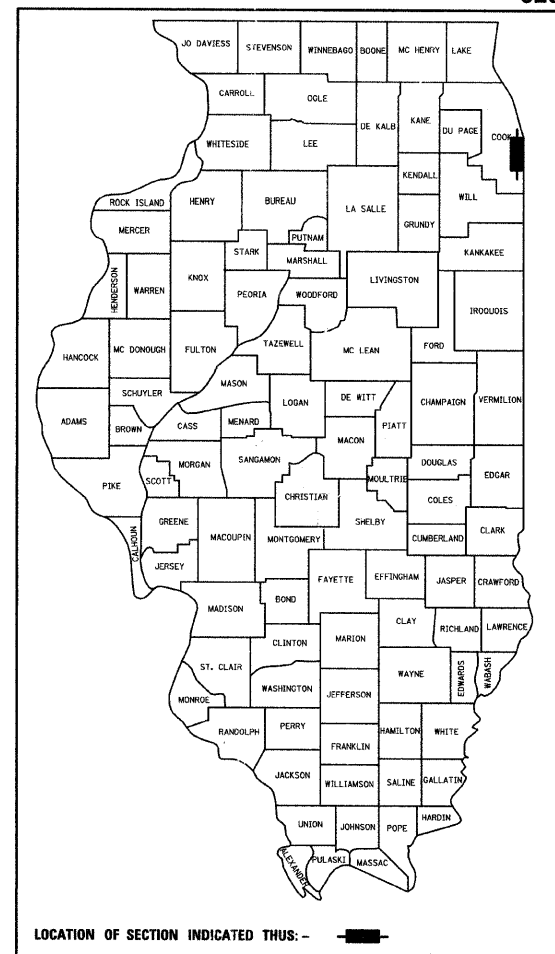
SECTION 1818 I-10

FLUTED KNEE WALL CONSTRUCTION ALONG LAFAYETTE AVENUE
FROM 74TH STREET TO 71ST STREET

COOK COUNTY

C-91-240-05

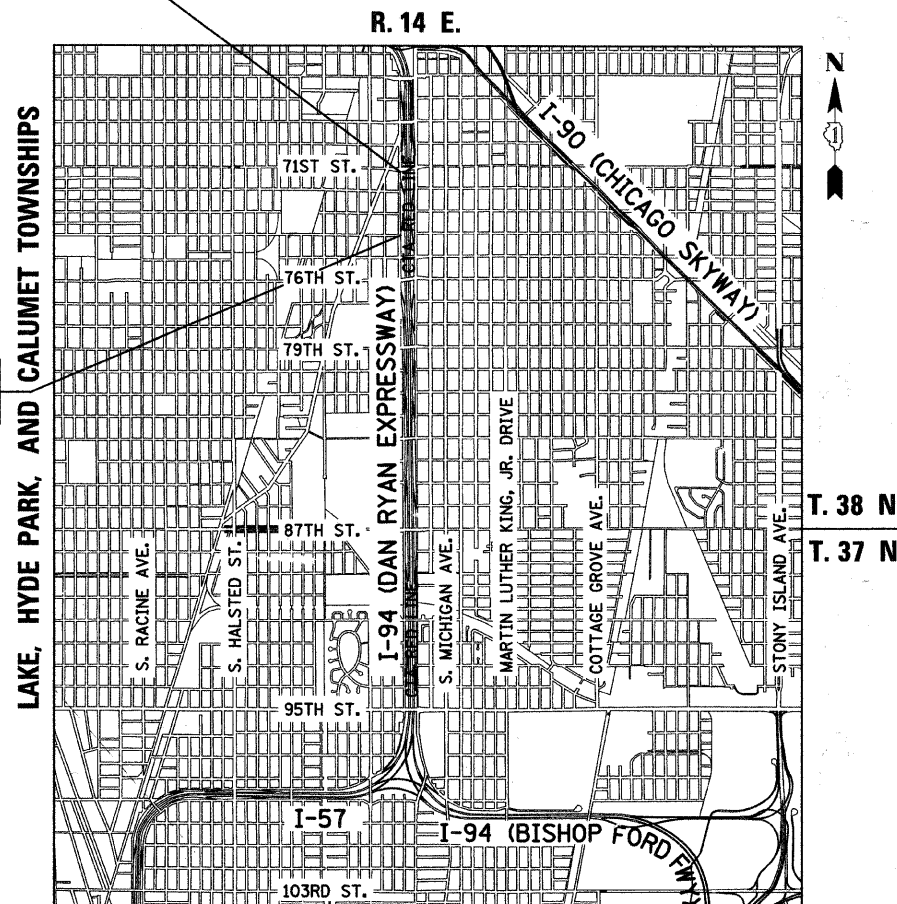
| F.A.I. RTE. | SECTION | COUNTY | TOTAL SHEETS | SHEET NO. |
|---|-----------|--------|--------------|-----------|
| 94 | 1818 I-10 | COOK | 44 | 1 |
| FED. ROAD DIST. NO. ILLINOIS FED. AID PROJECT | | | | |
| D-91-240-05 | | | | 62982 |



LOCATION OF SECTION INDICATED THUS: -

F.A.I. 94 (RYAN) PROJECT LIMIT
STA. 1364 + 78.90 (SB I-94)

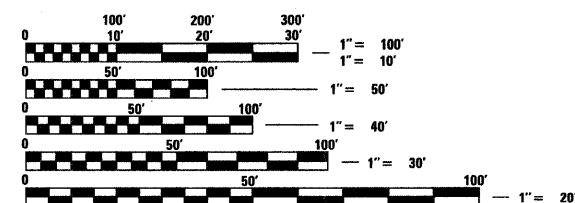
F.A.I. 94 (RYAN) PROJECT LIMIT
STA. 1346 + 92.86 (SB I-94)



LOCATION MAP

GROSS LENGTH OF PROJECT = 1786.04 FT. = 0.34 MI.
NET LENGTH OF PROJECT = 1786.04 FT. = 0.34 MI.
MAP SCALE: 1" = 1/2 MILE

PROJECT LOCATED IN THE CITY OF CHICAGO



FULL SIZE PLANS HAVE BEEN PREPARED USING STANDARD ENGINEERING SCALES; REDUCED SIZED PLANS WILL NOT CONFORM TO STANDARD SCALES. IN MAKING MEASUREMENTS ON REDUCED PLANS, THE ABOVE SCALES MAY BE USED

DIGGER:
CHICAGO UTILITY ALERT NETWORK
(312) 744-7000

CTA CONTACT:
DAVID HEARD,
MANAGER, CONSTRUCTION
MANAGEMENT OVERSIGHT
(312) 681-3862

CONTRACT NO. 62982

STATE OF ILLINOIS
DEPARTMENT OF TRANSPORTATION
DIVISION OF HIGHWAYS

SUBMITTED FEBRUARY 11, 2009

Diana M. O'Keefe DEPUTY DIRECTOR OF HIGHWAYS, REGION ENGINEER

June 26, 2009
Charles G. Ingersoll ENGINEER OF DESIGN AND ENVIRONMENT

June 26, 2009
Christine M. Reed DIRECTOR OF HIGHWAYS, CHIEF ENGINEER

CONTRACT 26F



Signed Dean A. Klesling
Dean A. Klesling, P.E., Ill. Lic. No. 32957
Expires 11-30-2009.
Date FEBRUARY 10, 2009

TYLIN INTERNATIONAL
PRINTED BY THE AUTHORITY OF THE STATE OF ILLINOIS

DISTRICT ONE DESIGN / PROJECT MANAGER:
BRIAN KUTTAB (847) 705 - 4431