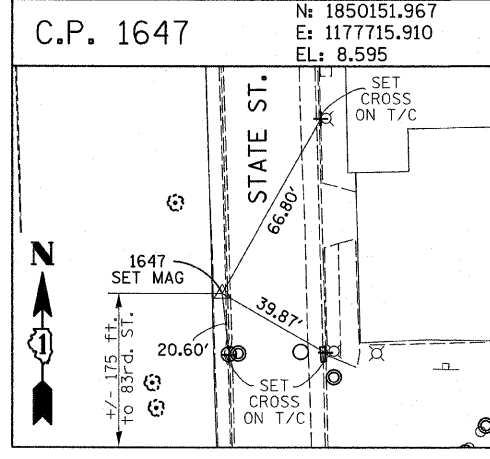
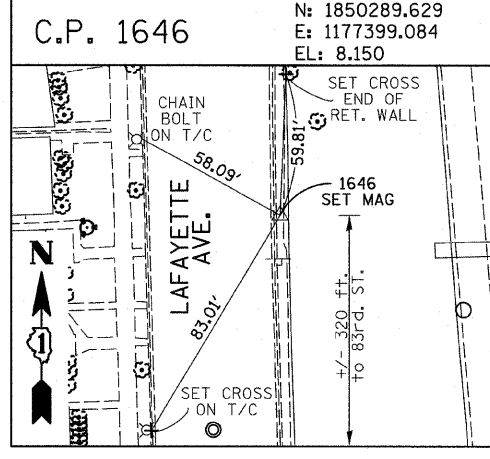
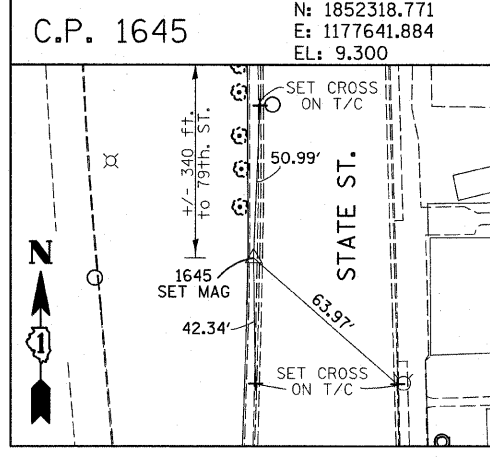
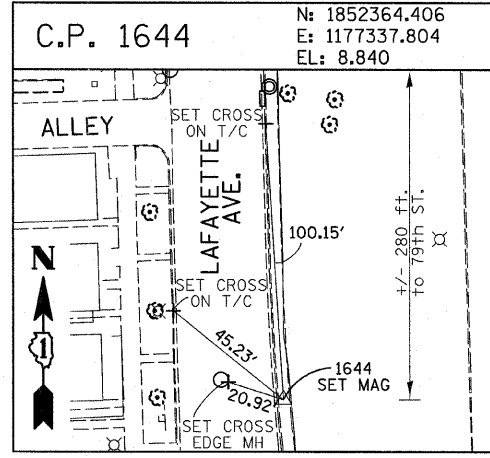
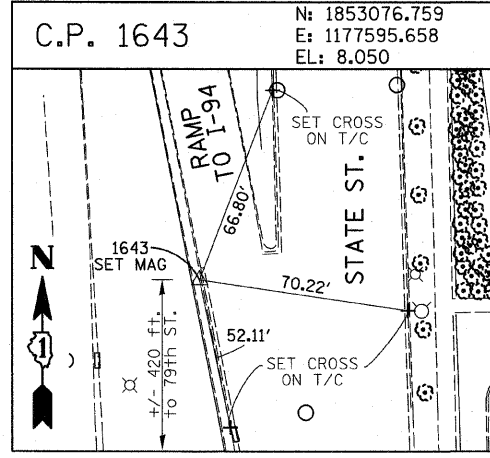
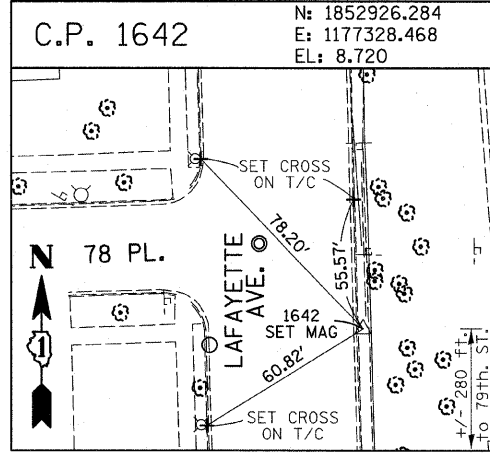
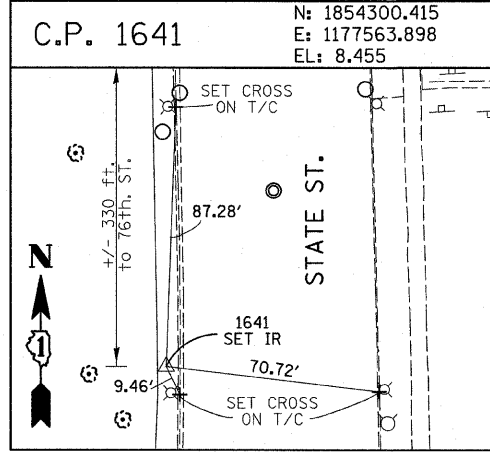
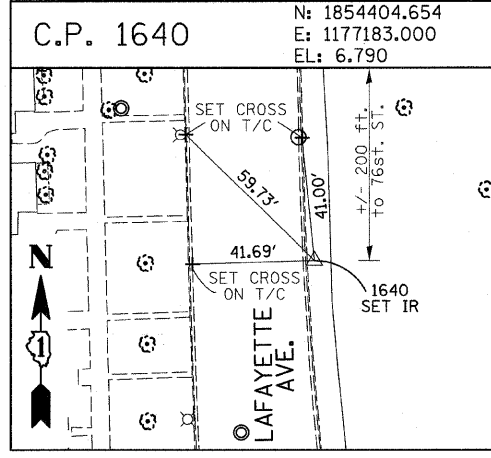
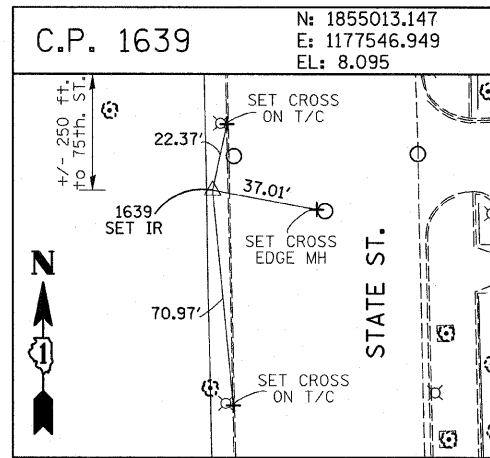
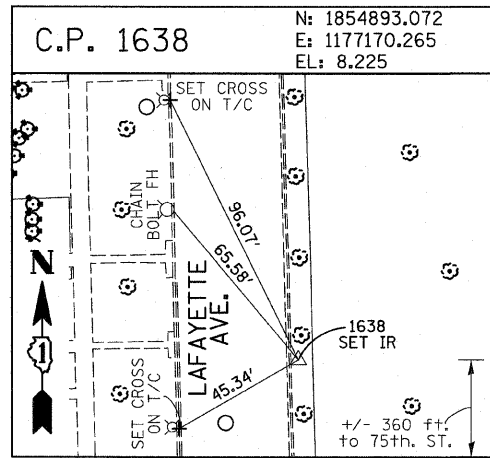
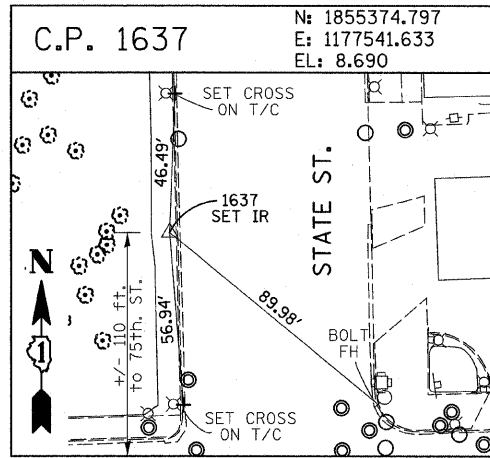
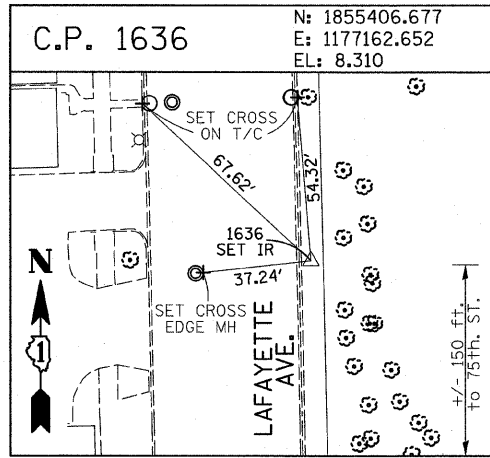
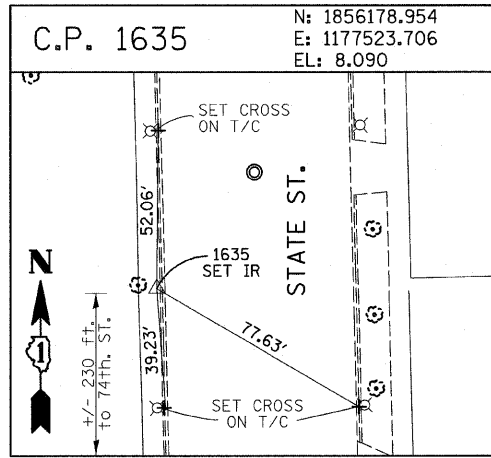
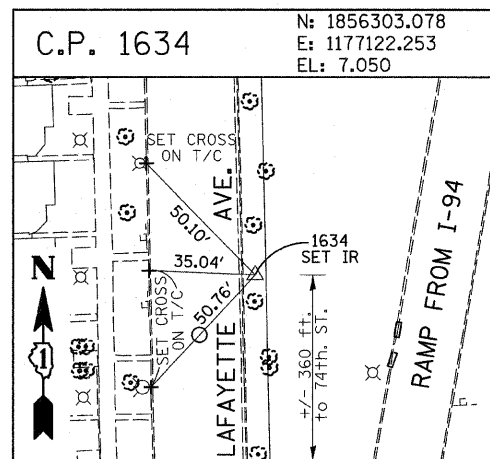
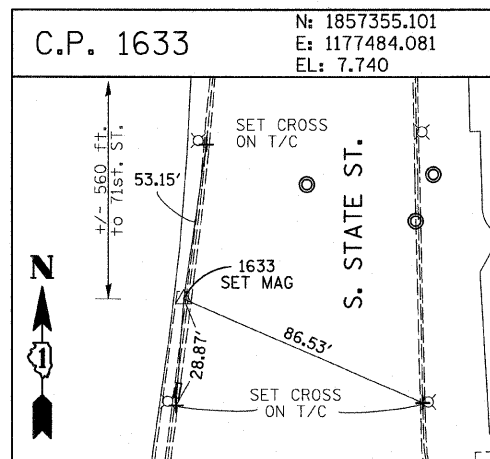
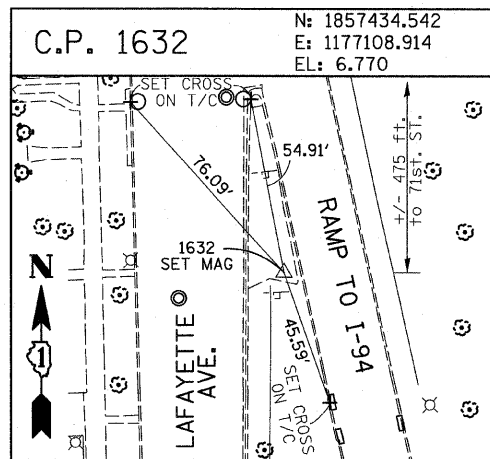
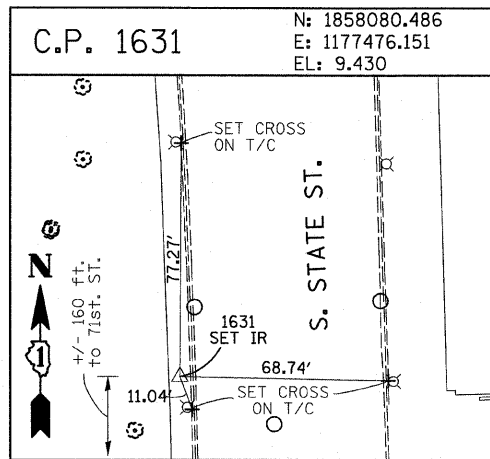
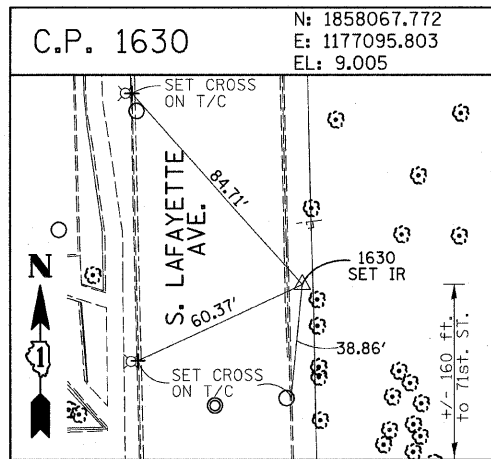


F.A.I. RTE.	SECTION	COUNTY	TOTAL SHEETS	SHEET NO.
94	1818 I-10	COOK	44	11
STA. 1346+92.86		TO STA. 1364+78.90		
FED. ROAD DIST. NO.		ILLINOIS		FED. AID PROJECT
62982				



American Surveying Consultants, P.C.  
1577 Flood Rd., Suite 111, Elmhurst, IL 60120

REVISIONS	
NAME	DATE

ILLINOIS DEPARTMENT OF TRANSPORTATION  
F.A.I. 94 (DAN RYAN EXPRESSWAY)  
SURVEY TIES FOR CONTROL POINTS  
SHEET 3 OF 7

SCALE: 1"=30'  
DATE: FEBRUARY 13, 2009  
DRAWN BY: GSP  
CHECKED BY: MMW

3/19/2009 3:52:08 PM