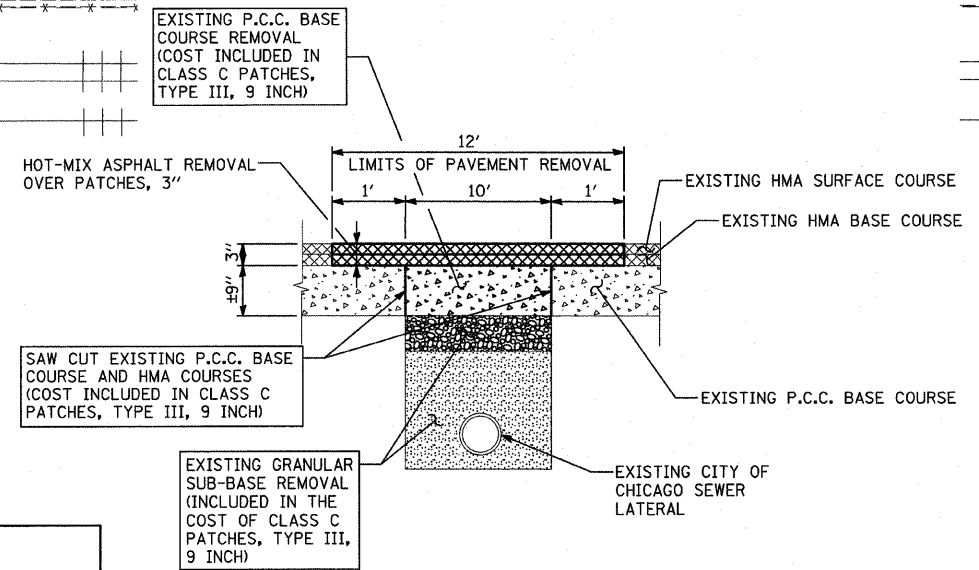
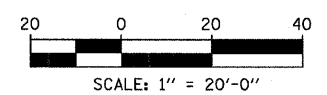
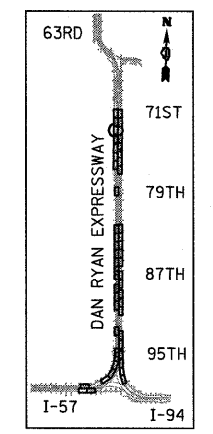
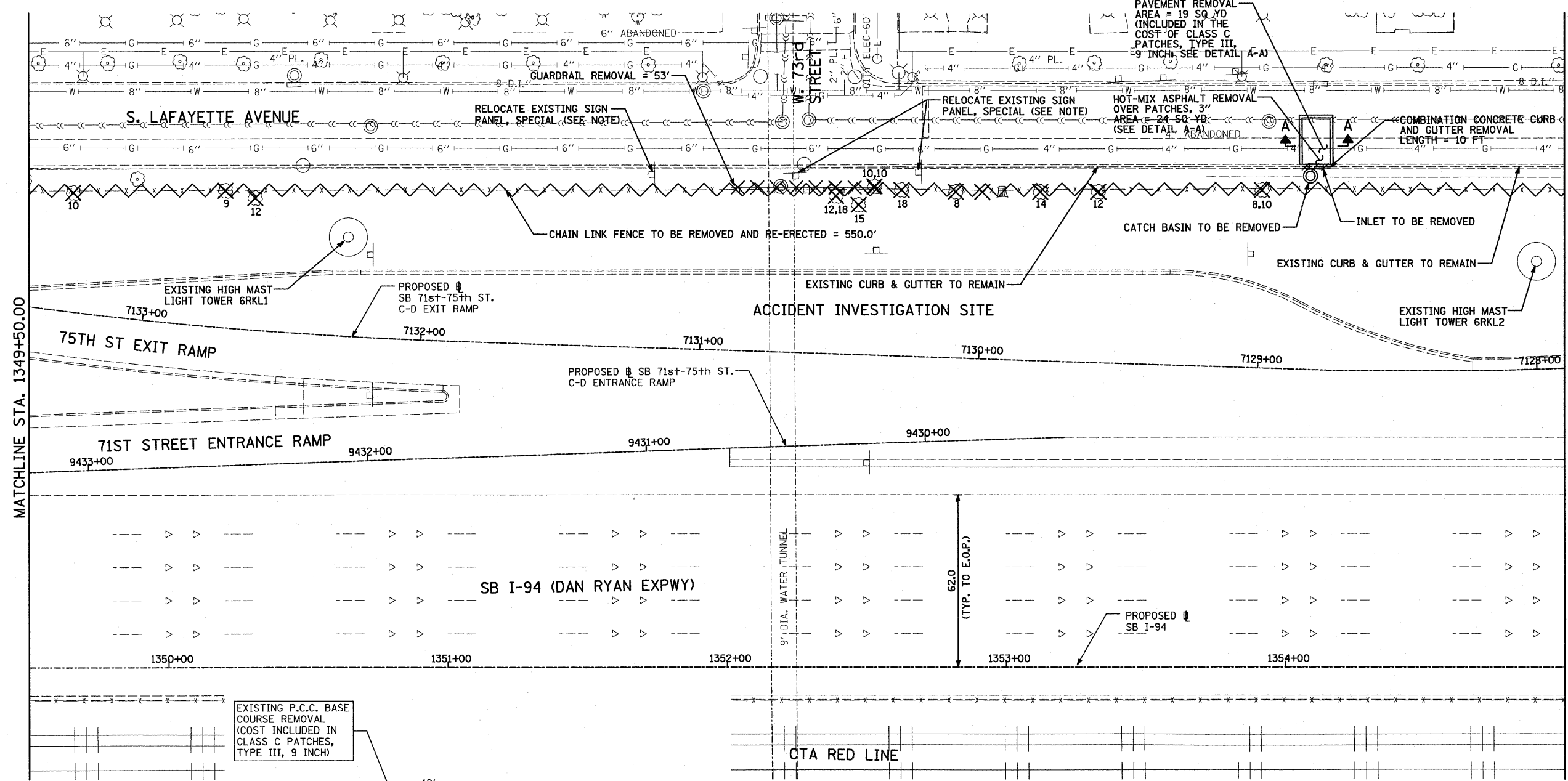


F.A.I. RTE.	SECTION	COUNTY	TOTAL SHEETS	SHEET NO.
94	1818 I-10	COOK	44	18
STA. 1346+92.86		TO STA. 1364+78.90		
FED. ROAD DIST. NO.	ILLINOIS	FED. AID PROJECT		
62982				



- LEGEND:**
- PAVED SHOULDER REMOVAL
 - COMB CONC CURB & GUTTER REMOVAL
 - CHAIN LINK FENCE REMOVAL
 - CONCRETE BARRIER/GUARDRAIL REMOVAL
 - TREE REMOVAL (UNITS) (NO UNIT SHOWN = <6)

NOTE:
SIGNS SHALL BE RELOCATED AT A MINIMUM OF 3 FEET FROM THE FRONT FACE OF THE PROPOSED KNEE WALL. EXACT PLACEMENT SHALL BE DETERMINED BY THE ENGINEER. PAID FOR AS "RELOCATE EXISTING SIGN PANEL, SPECIAL".

REVISIONS	
NAME	DATE

ILLINOIS DEPARTMENT OF TRANSPORTATION
F.A.I. 94 (DAN RYAN EXPRESSWAY)
REMOVAL PLAN
SB I-94 (DAN RYAN EXPRESSWAY)
STA. 1349+50.00 TO 1355+00.00

SCALE: 1"=20'
DATE: FEBRUARY 13, 2009
DRAWN BY: AMB, MAF
CHECKED BY: TGB, MI

TYLIN INTERNATIONAL

A-A - PAVEMENT REMOVAL AT PROPOSED CATCH BASINS
N.T.S.

P:\0231\3\road\c661\p0261.s03.s09.dgn 3/19/2009 3:52:22 PM