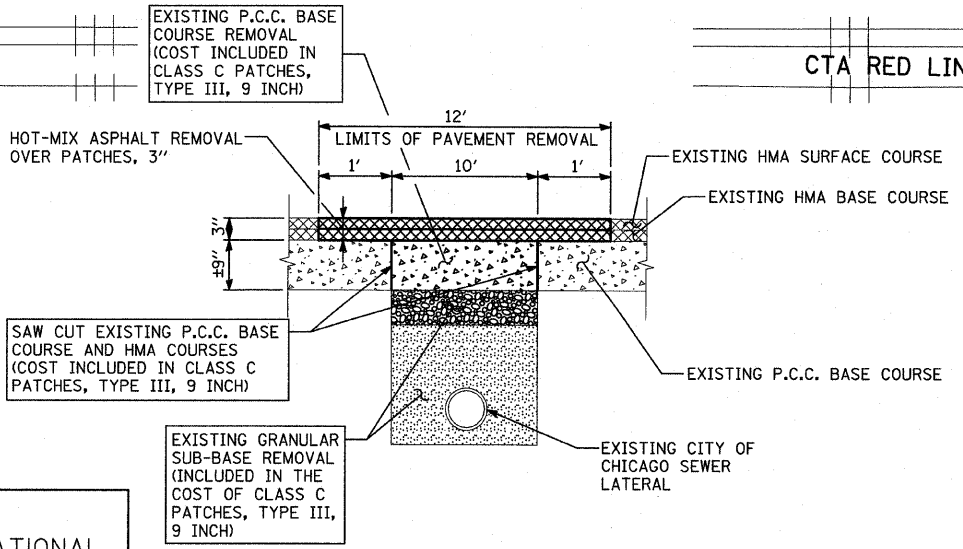
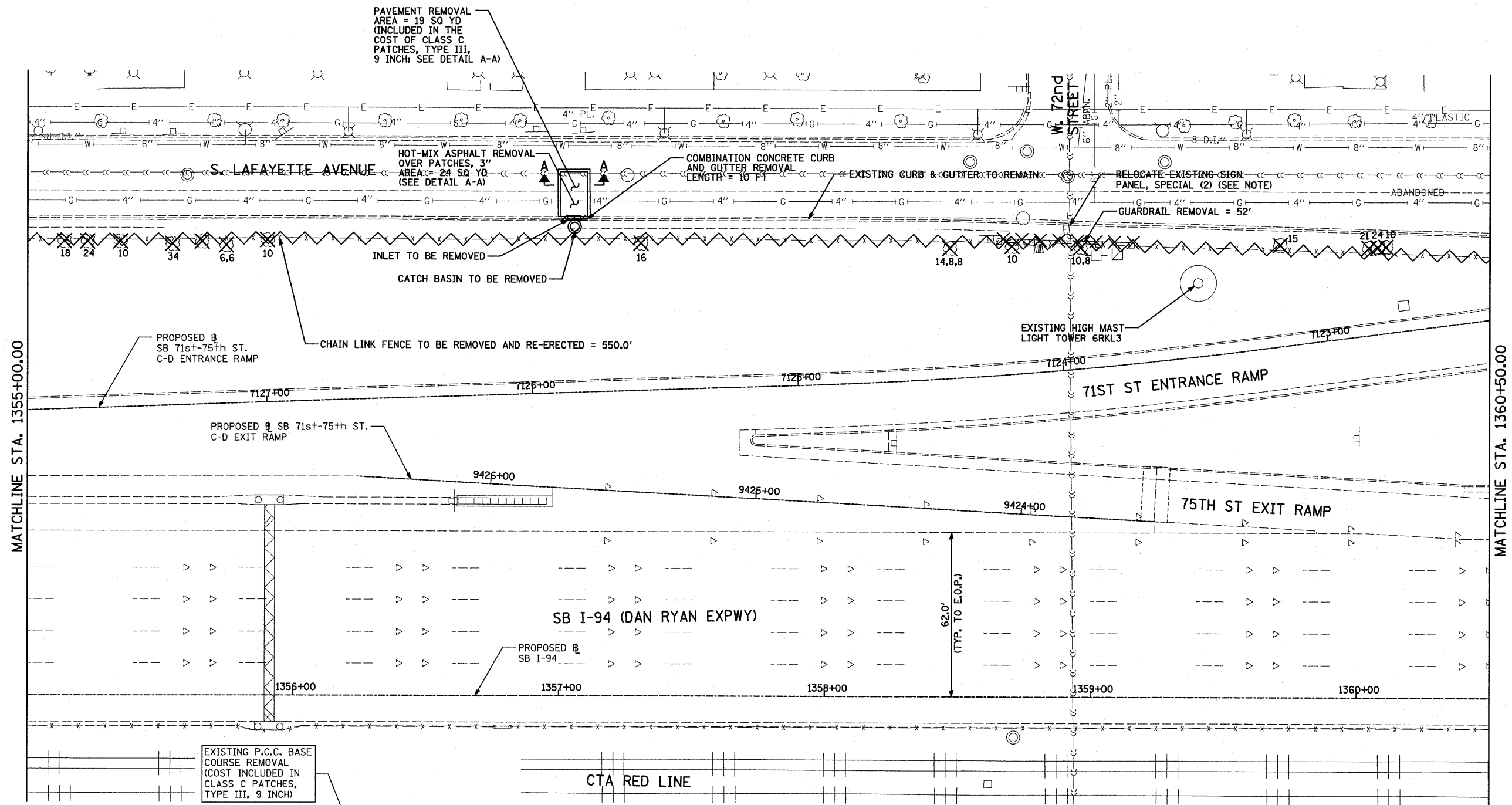
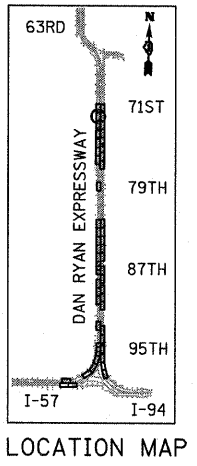
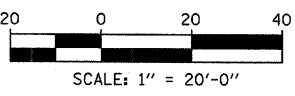


F.A.I. RTE.	SECTION	COUNTY	TOTAL SHEETS	SHEET NO.
94	1818 I-10	COOK	44	20
STA. 1346+92.86		TO STA. 1364+78.90		
FED. ROAD DIST. NO.	ILLINOIS	FED. AID PROJECT		
62982				



- LEGEND:**
- PAVED SHOULDER REMOVAL
 - COMB CONC CURB & GUTTER REMOVAL
 - CHAIN LINK FENCE REMOVAL
 - CONCRETE BARRIER/GUARDRAIL REMOVAL
 - TREE REMOVAL (UNITS) (NO UNIT SHOWN = 6)

NOTE:
SIGNS SHALL BE RELOCATED AT A MINIMUM OF 3 FEET FROM THE FRONT FACE OF THE PROPOSED KNEE WALL. EXACT PLACEMENT SHALL BE DETERMINED BY THE ENGINEER. PAID FOR AS "RELOCATE EXISTING SIGN PANEL, SPECIAL".



TYLIN INTERNATIONAL

A-A - PAVEMENT REMOVAL AT PROPOSED CATCH BASINS
N.T.S.

REVISIONS	
NAME	DATE

ILLINOIS DEPARTMENT OF TRANSPORTATION
F.A.I. 94 (DAN RYAN EXPRESSWAY)
REMOVAL PLAN
SB I-94 (DAN RYAN EXPRESSWAY)
STA. 1355+00.00 TO 1360+50.00

SCALE: 1"=20'
DATE: FEBRUARY 13, 2009
DRAWN BY: AMB, MAF
CHECKED BY: TGB, MI

3/19/2009 3:55:25 PM