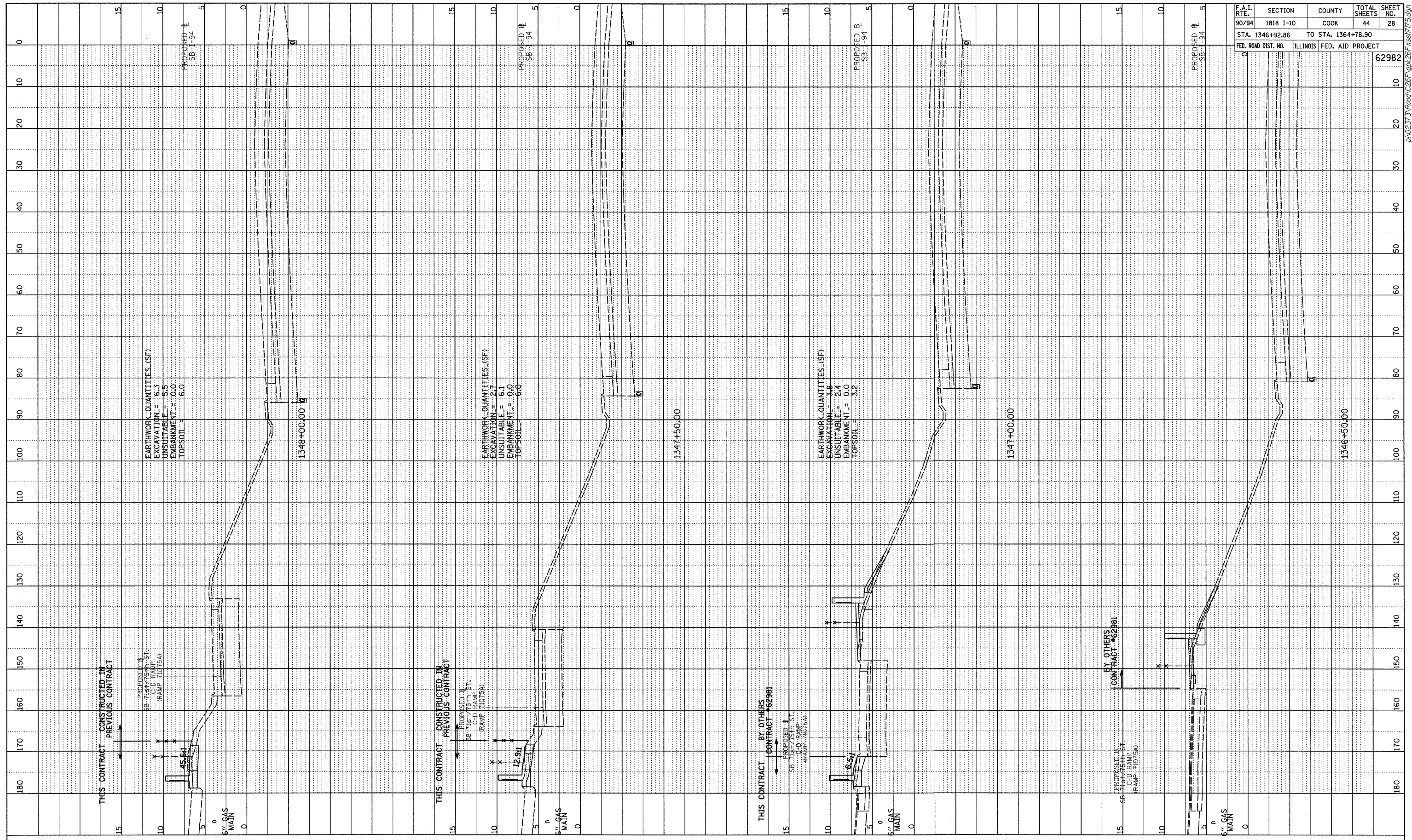
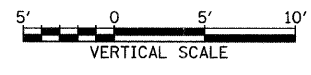
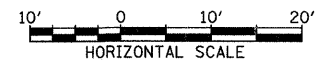


PROFILE  
 DATE \_\_\_\_\_  
 BY \_\_\_\_\_  
 SURVEYED \_\_\_\_\_  
 GRADES CHECKED \_\_\_\_\_  
 NOTE BOOK NO. \_\_\_\_\_  
 DRAWING NO. \_\_\_\_\_  
 PROJECT TITLE: I-94 SB RAMP



F.A.I. RTE.	SECTION	COUNTY	TOTAL SHEETS	SHEET NO.
90/94	1818 I-10	COOK	44	28
STA. 1346+92.86 TO STA. 1364+78.90				
ILLINOIS FED. AID PROJECT				
FED. ROAD DIST. NO.				62982

TYLIN INTERNATIONAL



SB I-94 (DAN RYAN EXPRESSWAY)  
STA. 1346+50 TO STA. 1348+00