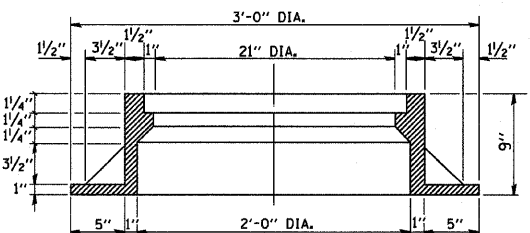


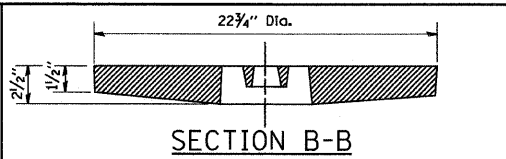
PLAN



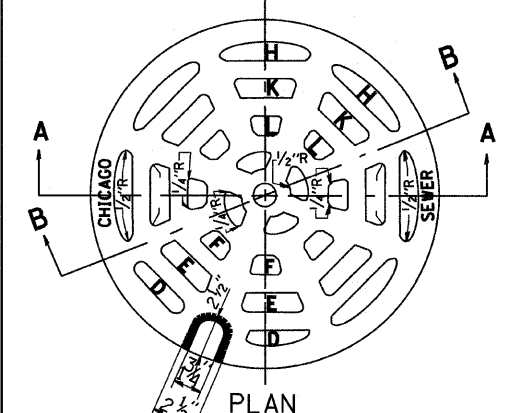
SECTION A-A

NOTE: METAL PLATES MUST BE FURNISHED FOR PERFORATED LIDS ON MANHOLES

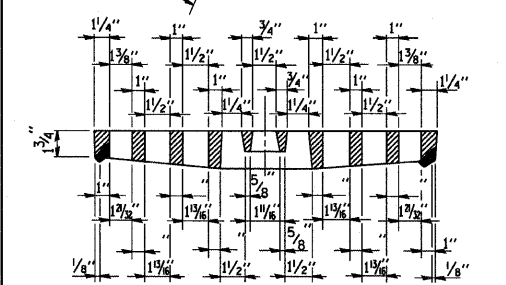
CHICAGO STANDARD MANHOLE FRAME
SCALE: 1/2"=1'-0"
MATERIAL: CAST IRON



SECTION B-B

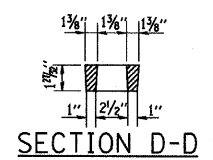


PLAN

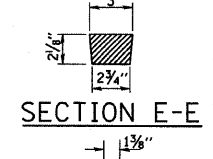


SECTION A-A

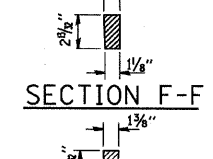
PERFORATED LID FOR CATCH BASINS & MANHOLES
SCALE: 2"=1'-0"
MATERIAL: CAST IRON



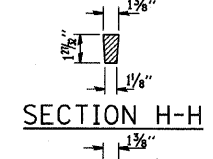
SECTION D-D



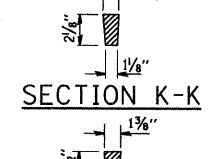
SECTION E-E



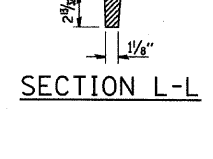
SECTION F-F



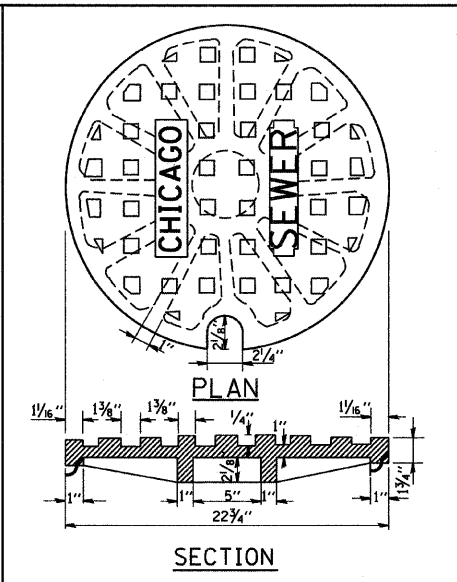
SECTION H-H



SECTION K-K

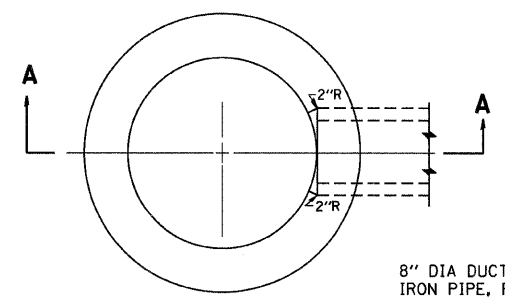


SECTION L-L



SOLID LID FOR MANHOLES

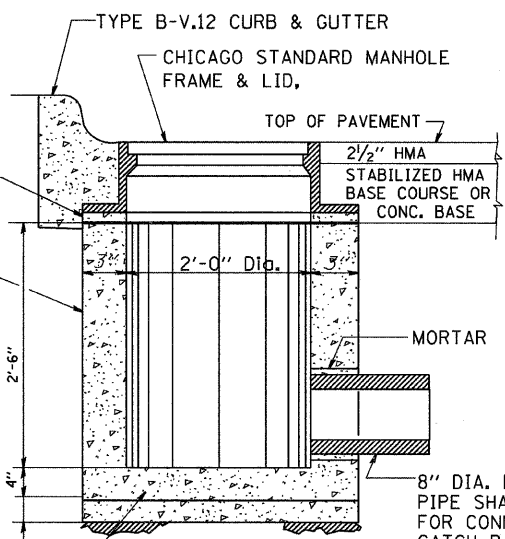
SCALE: NONE
MATERIAL: CAST IRON



PLAN

(FRAME & LID NOT SHOWN)

8" DIA DUCTILE IRON PIPE, PART OF ITEM 7G



SECTION A-A

REINF. CONC. BASE CAST AS INTEGRAL PART OF 24" DIA. PRECAST CONC. RING
6" MINIMUM GRANULAR EMBEDMENT UNDER ALL INLETS. FURNISHING AND INSTALLING GRANULAR EMBEDMENT SHALL BE INCLUDED IN THE UNIT PRICE BID FOR ITEM 12

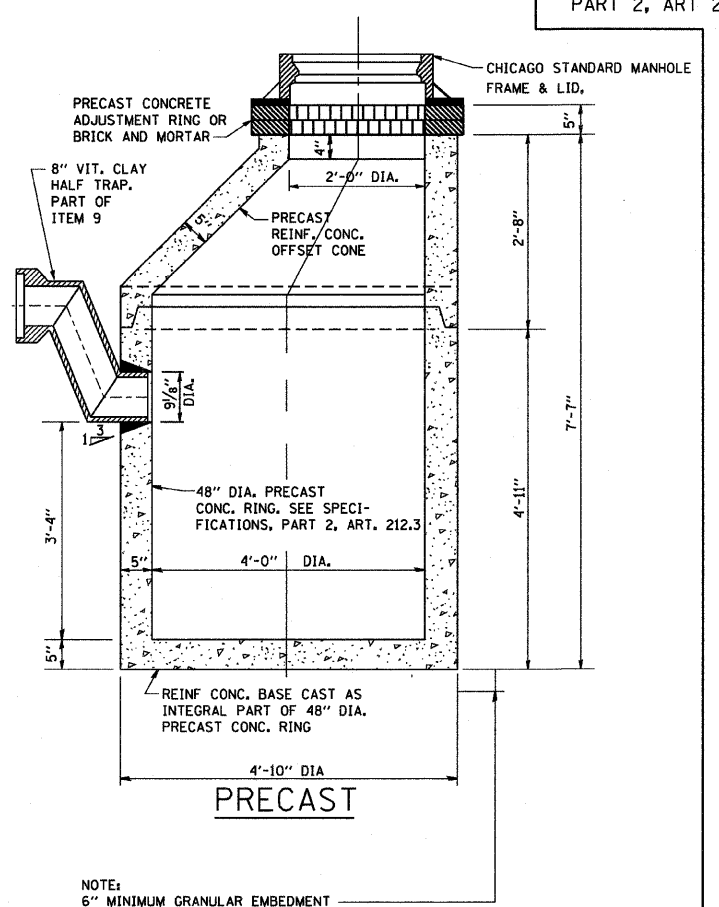
STANDARD INLETS

SCALE: 1"=1'-0"
ITEM 12

THIS INLET DETAIL IS SOMETIMES REFERRED TO AS "CHICAGO STANDARD INLET, TYPE A"

NOTE: INLETS SHALL NOT BE CONSTRUCTED UNLESS IT IS IMPOSSIBLE TO CONSTRUCT A CATCH BASIN. THE CONTRACTOR SHALL HAVE THE DEPARTMENT OF SEWERS APPROVAL BEFORE CONSTRUCTING INLETS.

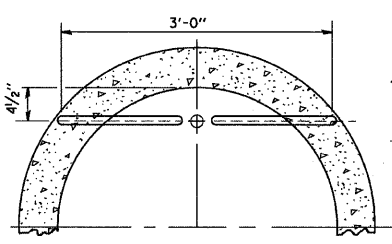
CITY OF CHICAGO
DEPARTMENT OF SEWERS
ENGINEERING DIVISION



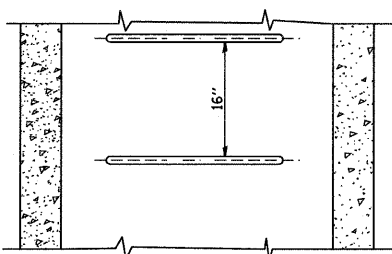
STANDARD CATCH BASINS

SCALE: 3/4"=1'-0"
ITEM 9

NOTE: 6" MINIMUM GRANULAR EMBEDMENT UNDER ALL CATCH BASINS

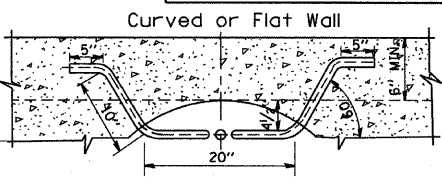


PLAN

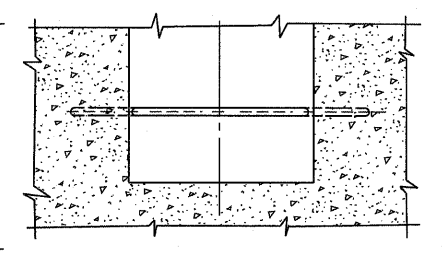


ELEVATION

TYPE X
SCALE: 1"=1'-0"

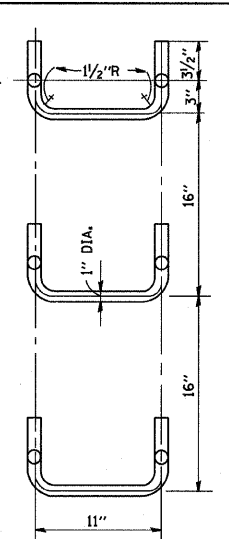


PLAN



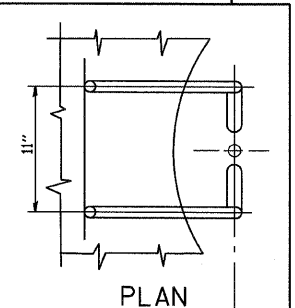
ELEVATION

TYPE Y
SCALE: 1"=1'-0"

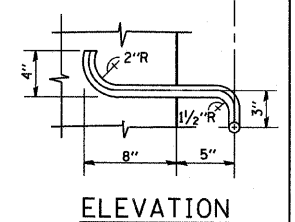


SPACING

HANDHOLD-TYPE Z RUNG
SCALE: 1/2"=1'-0"



PLAN



ELEVATION

STANDARD LADDER RUNGS
ALL LADDER RUNGS SHALL BE ALUMINUM OR GALVANIZED WROUGHT IRON AS SPECIFIED IN THE SPECIFICATIONS, PART 2, ARTICLE 214.2. RUNGS SHALL BE 1" DIAMETER OR OF A SHAPE HAVING AN EQUIVALENT CROSS-SECTIONAL AREA.

FILE NAME = W:\dststd\22x34\bd47.dgn	USER NAME = goglianobt	DESIGNED - M. GOMEZ	REVISED -
		DRAWN -	REVISED -
		CHECKED -	REVISED -
		DATE - 01-25-01	REVISED -

STATE OF ILLINOIS
DEPARTMENT OF TRANSPORTATION

CITY OF CHICAGO
CATCH BASIN, INLET AND MANHOLE DETAILS
SCALE: NONE SHEET NO. 1 OF 1 SHEETS STA. TO STA.

F.A. R.T.E. NO.	SECTION	COUNTY	TOTAL SHEETS	SHEET NO.
99	1818 I-10	COOK	49	40
BD600-13 (BD47)			CONTRACT NO. 62982	
FED. ROAD DIST. NO. 1 ILLINOIS FED. AID PROJECT				