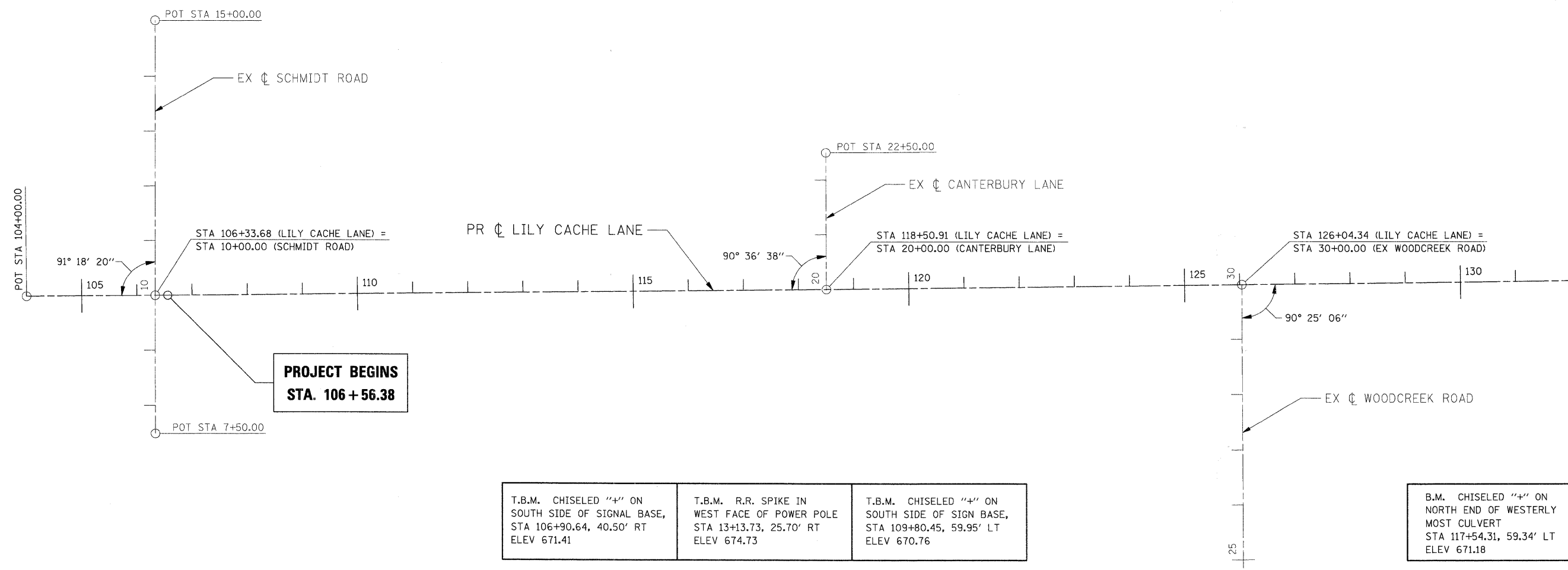


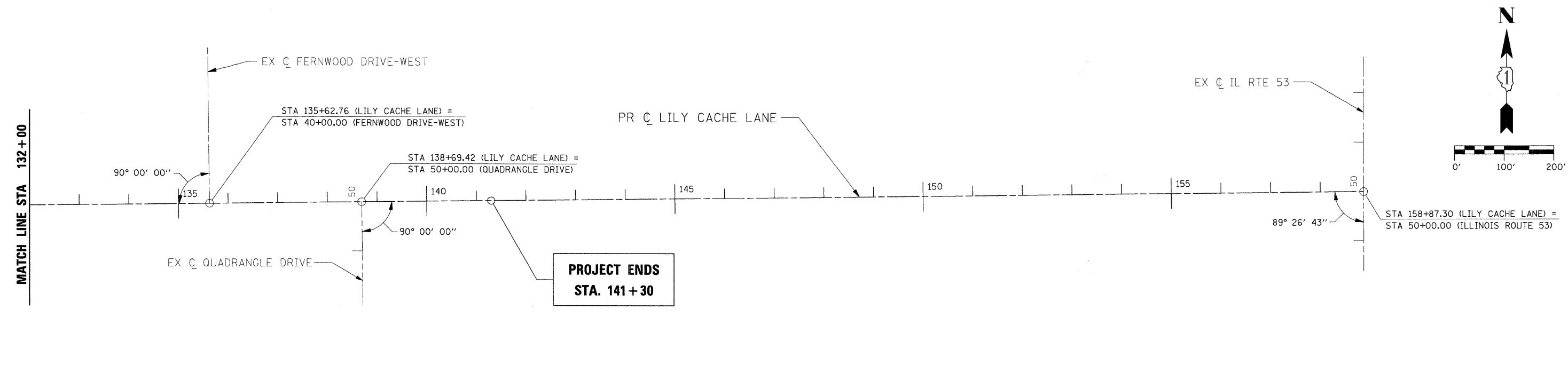
F.A.U. RTE.	SECTION	COUNTY	TOTAL SHEETS	SHEET NO.
1578	*	WILL	155	30
STA. 106+55.92		TO STA. 141+30.00		
FED. ROAD DIST. NO.		ILLINOIS	FED. AID PROJECT	

\* 06-00046-00-PV



T.B.M. CHISELED "+" ON SOUTH SIDE OF SIGNAL BASE, STA 106+90.64, 40.50' RT ELEV 671.41	T.B.M. R.R. SPIKE IN WEST FACE OF POWER POLE STA 13+13.73, 25.70' RT ELEV 674.73	T.B.M. CHISELED "+" ON SOUTH SIDE OF SIGN BASE, STA 109+80.45, 59.95' LT ELEV 670.76
--	--	--

B.M. CHISELED "+" ON NORTH END OF WESTERLY MOST CULVERT STA 117+54.31, 59.34' LT ELEV 671.18	T.B.M. CHISELED "□" ON NORTH SIDE OF CONCRETE LIGHT POLE BASE, STA 125+82.62, 34.75' RT ELEV 684.42
--	---



T.B.M. CHISELED "□" ON NORTH SIDE OF CONCRETE LIGHT POLE BASE, STA 135+78.38, 39.05' RT ELEV 699.51
---

T.B.M. CHISELED "+" ON SSE CAP BOLT OF FIRE HYDRANT STA 141.65.72, 51.52' RT ELEV 696.83
--

T.B.M. CHISELED "+" SSE CAP BOLT OF FIRE HYDRANT STA 145+26.46, 60.80' RT ELEV 698.30
---

T.B.M. CHISELED "+" SSE CAP BOLT OF FIRE HYDRANT STA 148+25.75, 62.89' RT ELEV 700.30
---

REVISIONS	
NAME	DATE

ILLINOIS DEPARTMENT OF TRANSPORTATION

### ALIGNMENT, TIES, AND BENCHMARKS

SCALE: 1" = 100'  
DATE: APRIL 9, 2009

DRAWN BY: JEB  
CHECKED BY: CMS

PLOT DATE = 04/09/09  
PLOT SCALE = 1"=100'  
USER NAME = #USER#

#FILES#