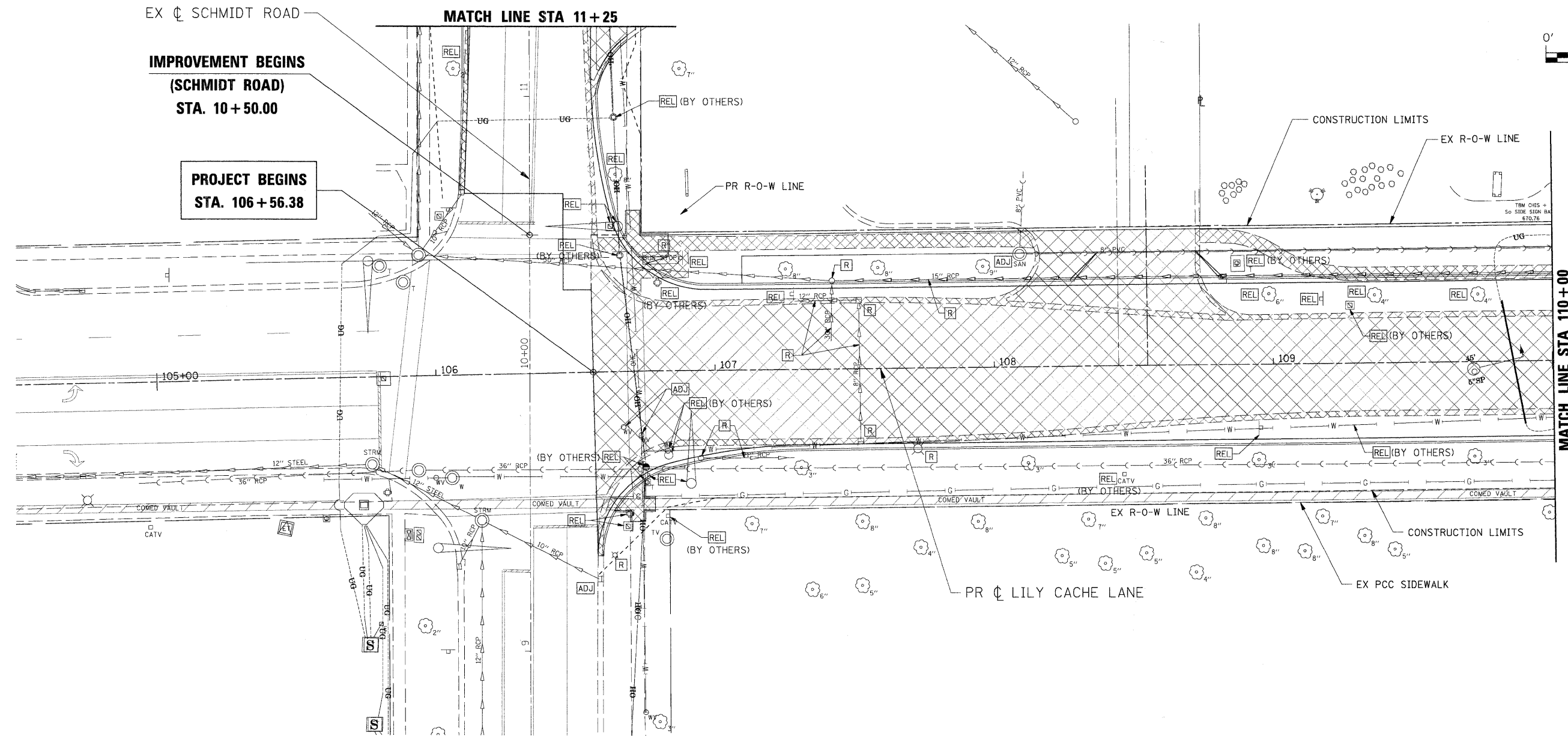
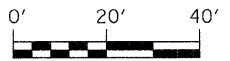


F.A.U. RTE.	SECTION	COUNTY	TOTAL SHEETS	SHEET NO.
1578	*	WILL	155	31
STA. 104+70		TO STA. 110+00		
FED. ROAD DIST. NO.		ILLINOIS FED. AID PROJECT		

\* 06-00046-00-PV

**NOTE:**

- TREES IN CONSTRUCTION AREA NOT MARKED FOR REMOVAL SHALL BE PROTECTED IN ACCORDANCE WITH THE STANDARD SPECIFICATIONS.



EX  $\phi$  SCHMIDT ROAD  
**IMPROVEMENT BEGINS**  
 (SCHMIDT ROAD)  
 STA. 10+50.00

**PROJECT BEGINS**  
 STA. 106+56.38

**MATCH LINE STA 11+25**

**MATCH LINE STA 110+00**

**LEGEND**

- BITUMINOUS / CONCRETE REMOVAL
- TO BE REMOVED
- TO BE ADJUSTED
- TO BE RELOCATED
- TREE REMOVAL

REVISIONS	
NAME	DATE

ILLINOIS DEPARTMENT OF TRANSPORTATION  
**REMOVAL & ADJUSTMENT PLAN**  
**STA 104+70 TO STA 110+00**

SCALE: 1" = 20'  
 DATE: APRIL 9, 2009

DRAWN BY: JEB  
 CHECKED BY: CMS

PLOT DATE = 04/09/09  
 PLOT SCALE = 1"=20'  
 USER NAME = JEB

\*FILES\*