

F.A.U. RTE.	SECTION	COUNTY	TOTAL SHEETS	SHEET NO.
1578	*	WILL	155	58

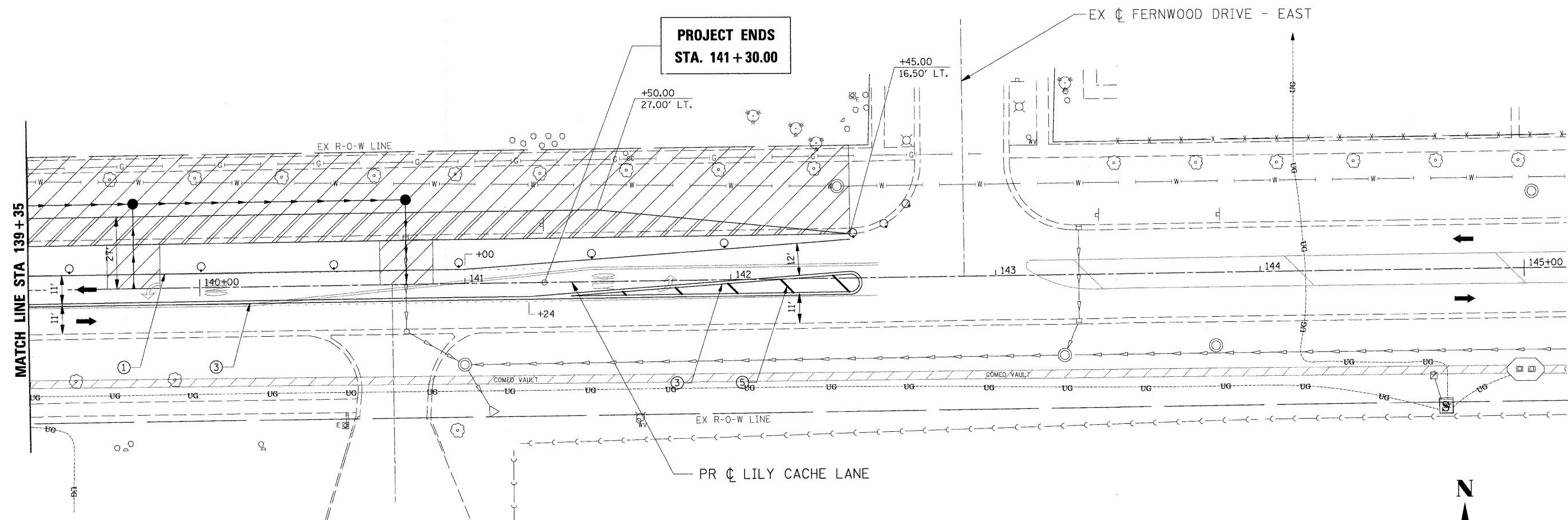
STA. 139+35 TO STA. 145+10

FED. ROAD DIST. NO. ILLINOIS FED. AID PROJECT

\* 06-00046-00-PV

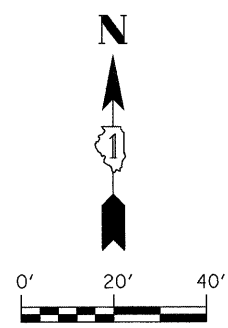
**NOTES:**

1. SEE "REMOVAL AND ADJUSTMENT PLANS" FOR REMOVAL OF EXISTING ITEMS.
2. CONTRACTOR SHALL MAINTAIN ACCESS TO ALL SIDE ROADS AND ENTRANCES AT ALL TIMES.
3. THE CONTRACTOR SHALL APPLY TYPE III PAVEMENT MARKING TAPE AS DIRECTED BY THE ENGINEER. THIS ITEM SHALL BE INCLUDED IN THE COST OF TEMPORARY PAVEMENT MARKINGS.



**LEGEND**

- ➔ DIRECTION OF TRAFFIC
- CONE, DRUM, OR BARRICADE
- ⊥ TYPE III BARRICADE
- ➔ TEMPORARY STAGE DRAINAGE FLOW
- ▨ STAGE CONSTRUCTION LIMITS
- ▨ TEMPORARY PAVEMENT
- ▨ TEMPORARY PAVEMENT REMOVAL
- ① TEMP. PAINT PAVEMENT MARKING - LINE 4" (WHITE)
- ② TEMP. PAINT PAVEMENT MARKING - LINE 4" (YELLOW)
- ③ TEMP. PAINT PAVEMENT MARKING - LINE 4" (DOUBLE YELLOW)
- ④ TEMP. PAINT PAVEMENT MARKING - LINE 6" (WHITE)
- ⑤ TEMP. PAINT PAVEMENT MARKING - LINE 12" (YELLOW)
- ⑥ TEMP. PAINT PAVEMENT MARKING - LINE 24" (WHITE)
- ⑦ TEMP. PAINT PAVEMENT MARKING - LETTERS & SYMBOLS



REVISIONS	
NAME	DATE

ILLINOIS DEPARTMENT OF TRANSPORTATION  
**MAINTENANCE OF TRAFFIC**  
**STAGE 2**  
**STA 139+35 TO STA 145+10**  
 SCALE: 1" = 20'  
 DATE: APRIL 9, 2009  
 DRAWN BY: JEB  
 CHECKED BY: CMS

PLOT DATE = #DATE#  
 FILE NAME = #FILE#  
 PLOT SCALE = #SCALE#  
 USER NAME = #USER#

\$FILES