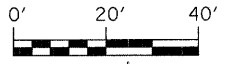
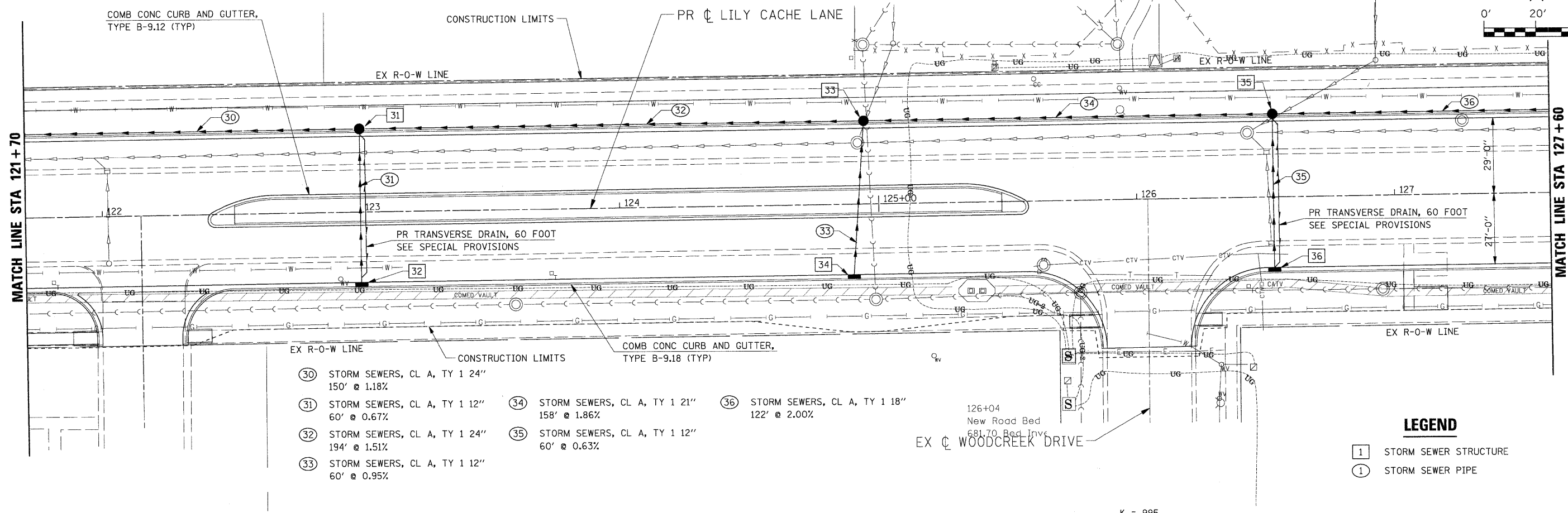


F.A.U. RTE.	SECTION	COUNTY	TOTAL SHEETS	SHEET NO.
1578	*	WILL	155	92
STA. 121+70.00		TO STA. 127+60.00		
FED. ROAD DIST. NO.	ILLINOIS	FED. AID PROJECT		

\* 06-00046-00-PV

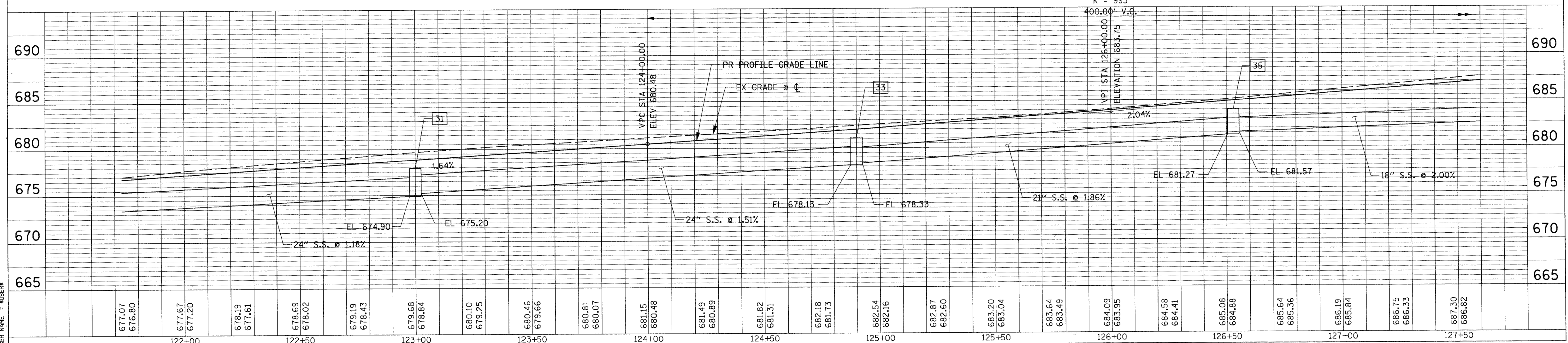


- 31** STA. 123+00, 29.00' LT RD CATCH BASINS, 5' DIA, TY 15 FRAME & LID  
EOP ELEV 678.40  
S  $\bar{H}$  ELEV 675.25  
E  $\bar{H}$  ELEV 675.20  
W  $\bar{H}$  ELEV 674.90
- 32** STA. 123+00, 27.00' RT INLETS, TY A, TY 3V FRAME & GRATE  
EOP ELEV 678.40  
N  $\bar{H}$  ELEV 675.65
- 33** STA. 124+94.50, 29.00' LT RD CATCH BASINS, 5' DIA, TY 15 FRAME & LID  
EOP ELEV 681.63  
S  $\bar{H}$  ELEV 678.23  
E  $\bar{H}$  ELEV 678.33  
W  $\bar{H}$  ELEV 678.13
- 34** STA. 124+90, 27.00' RT INLETS, TY A, TY 3V FRAME & GRATE  
EOP ELEV 681.55  
N  $\bar{H}$  ELEV 678.80
- 35** STA. 126+53, 29.00' LT RD CATCH BASINS, 5' DIA, TY 15 FRAME & LID  
EOP ELEV 684.50  
EX NE  $\bar{H}$  ELEV 681.90±  
S  $\bar{H}$  ELEV 681.37  
E  $\bar{H}$  ELEV 681.57  
W  $\bar{H}$  ELEV 681.27
- 36** STA. 126+53, 27.00' RT INLETS, TY A, TY 3V FRAME & GRATE  
EOP ELEV 684.50  
N  $\bar{H}$  ELEV 681.75



- 30** STORM SEWERS, CL A, TY 1 24" 150' @ 1.18%
- 31** STORM SEWERS, CL A, TY 1 12" 60' @ 0.67%
- 32** STORM SEWERS, CL A, TY 1 24" 194' @ 1.51%
- 33** STORM SEWERS, CL A, TY 1 12" 60' @ 0.95%
- 34** STORM SEWERS, CL A, TY 1 21" 158' @ 1.86%
- 35** STORM SEWERS, CL A, TY 1 12" 60' @ 0.63%
- 36** STORM SEWERS, CL A, TY 1 18" 122' @ 2.00%

- LEGEND**
- 1 STORM SEWER STRUCTURE
  - 1 STORM SEWER PIPE



DRAINAGE & UTILITY PLAN STA 121+70 TO STA 127+60

NOTE BOOK NO. \_\_\_\_\_

DRAWING CHECKED BY \_\_\_\_\_

REVISIONS

DATE

DRAWN BY \_\_\_\_\_

CADD FILE NAME

NOTE BOOK NO. \_\_\_\_\_

DRAWING CHECKED BY \_\_\_\_\_

REVISIONS

DATE

DRAWN BY \_\_\_\_\_

CADD FILE NAME

PLOT DATE = 04/26/2011

FILE NAME = 06FILES

USER NAME = USER

#FILES