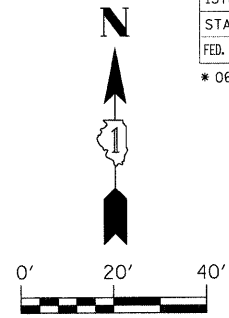


F.A.U. RTE.	SECTION	COUNTY	TOTAL SHEETS	SHEET NO.
1578	*	WILL	155	95
STA. 139+35.00		TO STA. 145+10.00		
FED. ROAD DIST. NO.		ILLINOIS FED. AID PROJECT		

* 06-00046-00-PV



56 STA. 139+75, 29.00' LT RD CATCH BASINS, 4' DIA, TY 15 FRAME & LID
EOP ELEV 695.79
E ELEV 693.49
S ELEV 693.49
W ELEV 693.69

57 STA. 139+75, 27.00' RT INLETS, TY A, TY 3V FRAME & GRATE
EOP ELEV 695.79
N ELEV 693.79

58 STA. 140+93, 29.00' LT INLETS, TY A, TY 3 FRAME & GRATE
EOP ELEV 695.29
W ELEV 693.00

59 STA. 140+78, 29.00' LT RD CATCH BASINS, 4' DIA, TY 15 FRAME & LID
EOP ELEV 695.28
E ELEV 692.92
S ELEV 692.82
W ELEV 692.92

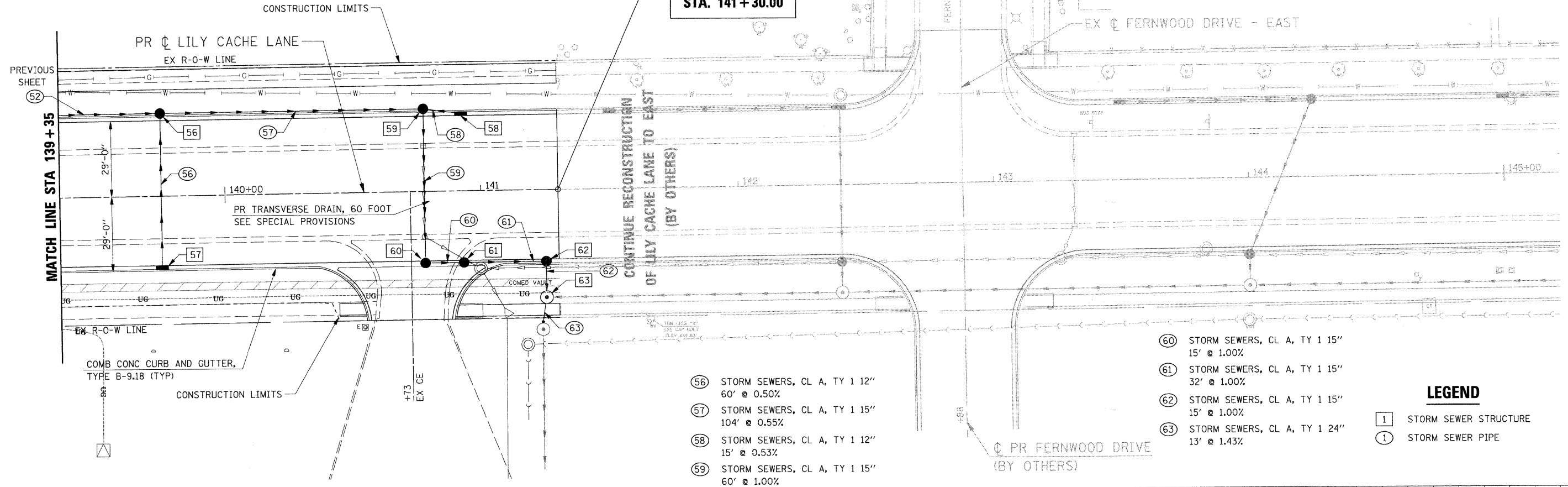
60 STA. 140+78, 27.00' RT RD CATCH BASINS, 4' DIA, TY 1 FRAME & GRATE
EOP ELEV 695.28
N ELEV 692.22
E ELEV 692.12

61 STA. 140+93, 27.00' RT RD CATCH BASINS, 4' DIA, TY 23 FRAME & GRATE
EOP ELEV 695.29
W ELEV 691.97
E ELEV 691.77

62 STA. 141+25, 27.00' RT RD CATCH BASINS, 4' DIA, TY 3V FRAME & GRATE
EOP ELEV 695.38
W ELEV 691.45
S ELEV 691.35

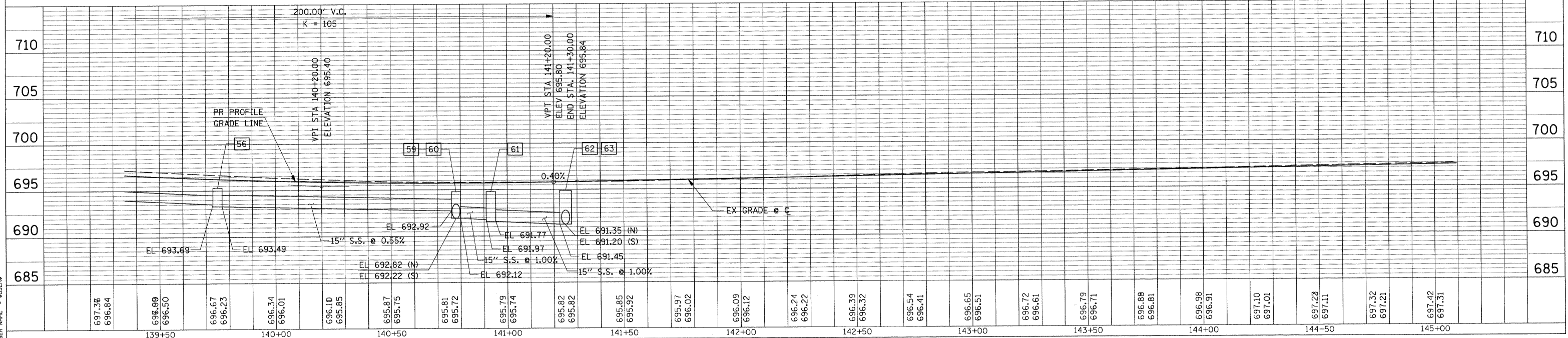
63 STA. 141+25, 42.00' RT RD MANHOLES, 5' DIA, TY 1 FRAME, CLID
RIM ELEV 695.80
N ELEV 691.20
E ELEV 690.10 (PLUG FOR FUTURE USE)
S ELEV 690.10

**PROJECT ENDS
STA. 141 + 30.00**



- 56 STORM SEWERS, CL A, TY 1 12" 60' @ 0.50%
- 57 STORM SEWERS, CL A, TY 1 15" 104' @ 0.55%
- 58 STORM SEWERS, CL A, TY 1 12" 15' @ 0.53%
- 59 STORM SEWERS, CL A, TY 1 15" 60' @ 1.00%
- 60 STORM SEWERS, CL A, TY 1 15" 15' @ 1.00%
- 61 STORM SEWERS, CL A, TY 1 15" 32' @ 1.00%
- 62 STORM SEWERS, CL A, TY 1 15" 15' @ 1.00%
- 63 STORM SEWERS, CL A, TY 1 24" 13' @ 1.43%

- LEGEND**
- 1 STORM SEWER STRUCTURE
 - 1 STORM SEWER PIPE



DRAINAGE & UTILITY PLAN STA 139+35 TO STA 145+10

NOTE BOOK
ALIGNMENT CHECKED
RT. OF WAY CHECKED
CADD FILE NAME
NO.

NOTES CHECKED
DRAWN BY
STRUCTURE NOTATION CHECKED
NO.

PLOT DATE = #DATE#
PLOT SCALE = #SCALE#
USER NAME = #USER#