

F.A.U. RTE.	SECTION	COUNTY	TOTAL SHEETS	SHEET NO.
1578	*	WILL	155	121
STA.		TO STA.		
FED. ROAD DIST. NO.		ILLINOIS FED. AID PROJECT		

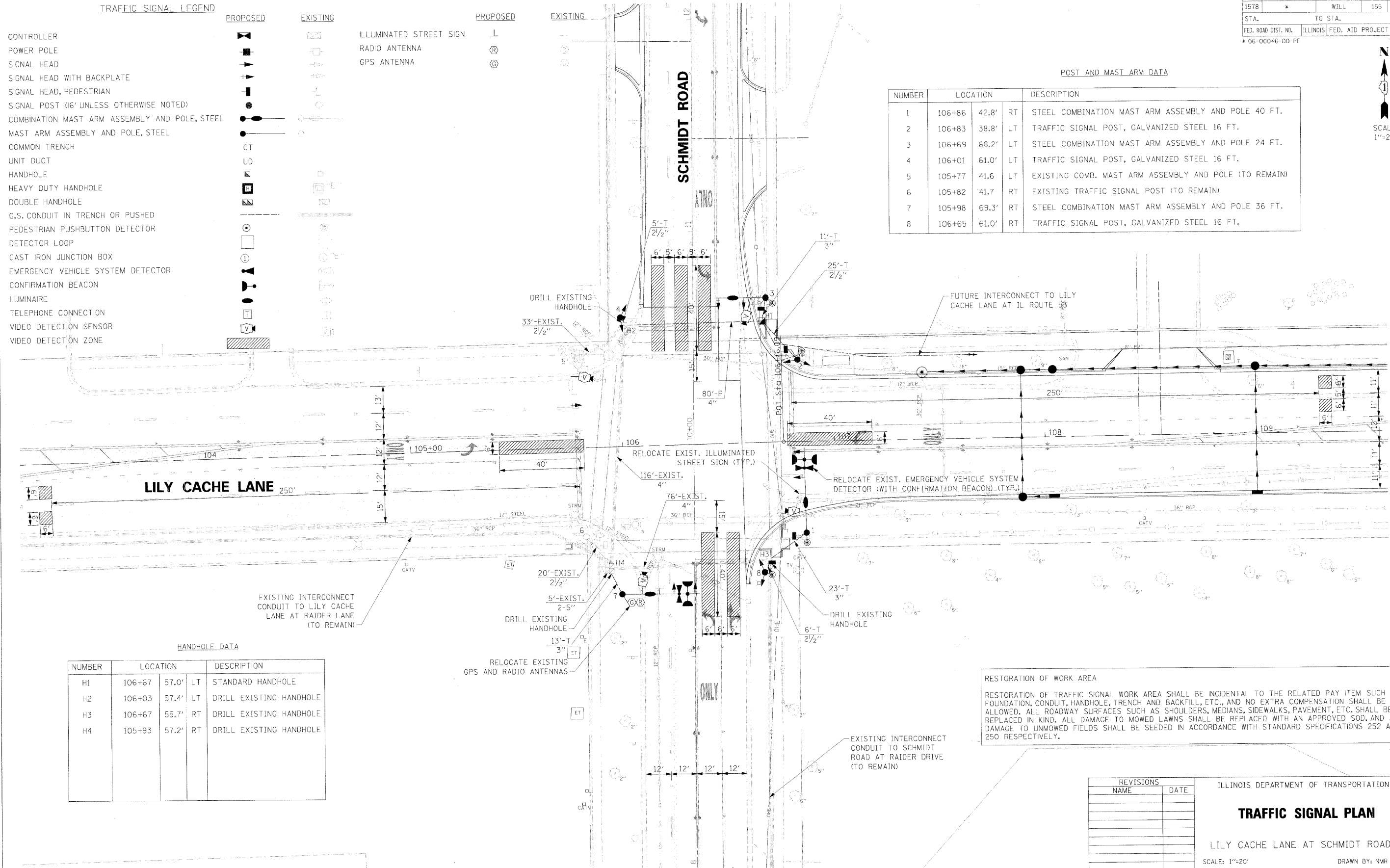
\* 06-00046-00-PF

TRAFFIC SIGNAL LEGEND

	PROPOSED	EXISTING		PROPOSED	EXISTING
CONTROLLER			ILLUMINATED STREET SIGN		
POWER POLE			RADIO ANTENNA		
SIGNAL HEAD			GPS ANTENNA		
SIGNAL HEAD WITH BACKPLATE					
SIGNAL HEAD, PEDESTRIAN					
SIGNAL POST (16' UNLESS OTHERWISE NOTED)					
COMBINATION MAST ARM ASSEMBLY AND POLE, STEEL					
MAST ARM ASSEMBLY AND POLE, STEEL					
COMMON TRENCH	CT				
UNIT DUCT	UD				
HANDHOLE					
HEAVY DUTY HANDHOLE					
DOUBLE HANDHOLE					
G.S. CONDUIT IN TRENCH OR PUSHED					
PEDESTRIAN PUSHBUTTON DETECTOR					
DETECTOR LOOP					
CAST IRON JUNCTION BOX					
EMERGENCY VEHICLE SYSTEM DETECTOR					
CONFIRMATION BEACON					
LUMINAIRE					
TELEPHONE CONNECTION					
VIDEO DETECTION SENSOR					
VIDEO DETECTION ZONE					

POST AND MAST ARM DATA

NUMBER	LOCATION	DESCRIPTION
1	106+86 42.8' RT	STEEL COMBINATION MAST ARM ASSEMBLY AND POLE 40 FT.
2	106+83 38.8' LT	TRAFFIC SIGNAL POST, GALVANIZED STEEL 16 FT.
3	106+69 68.2' LT	STEEL COMBINATION MAST ARM ASSEMBLY AND POLE 24 FT.
4	106+01 61.0' LT	TRAFFIC SIGNAL POST, GALVANIZED STEEL 16 FT.
5	105+77 41.6 LT	EXISTING COMB. MAST ARM ASSEMBLY AND POLE (TO REMAIN)
6	105+82 41.7 RT	EXISTING TRAFFIC SIGNAL POST (TO REMAIN)
7	105+98 69.3' RT	STEEL COMBINATION MAST ARM ASSEMBLY AND POLE 36 FT.
8	106+65 61.0' RT	TRAFFIC SIGNAL POST, GALVANIZED STEEL 16 FT.



HANDHOLE DATA

NUMBER	LOCATION	DESCRIPTION
H1	106+67 57.0' LT	STANDARD HANDHOLE
H2	106+03 57.4' LT	DRILL EXISTING HANDHOLE
H3	106+67 55.7' RT	DRILL EXISTING HANDHOLE
H4	105+93 57.2' RT	DRILL EXISTING HANDHOLE

RESTORATION OF WORK AREA  
 RESTORATION OF TRAFFIC SIGNAL WORK AREA SHALL BE INCIDENTAL TO THE RELATED PAY ITEM SUCH AS FOUNDATION, CONDUIT, HANDHOLE, TRENCH AND BACKFILL, ETC., AND NO EXTRA COMPENSATION SHALL BE ALLOWED. ALL ROADWAY SURFACES SUCH AS SHOULDERS, MEDIANS, SIDEWALKS, PAVEMENT, ETC. SHALL BE REPLACED IN KIND. ALL DAMAGE TO MOWED LAWNS SHALL BE REPLACED WITH AN APPROVED SOD, AND ALL DAMAGE TO UNMOWED FIELDS SHALL BE SEEDED IN ACCORDANCE WITH STANDARD SPECIFICATIONS 252 AND 250 RESPECTIVELY.

REVISIONS	
NAME	DATE

ILLINOIS DEPARTMENT OF TRANSPORTATION  
**TRAFFIC SIGNAL PLAN**  
 LILY CACHE LANE AT SCHMIDT ROAD  
 SCALE: 1"=20'  
 DATE: 03/31/2009  
 DRAWN BY: NMR  
 CHECKED BY: DJL

PLOT DATE = 4/9/2009  
 FILE NAME = 20100007 / IN  
 USER NAME = BUSER9