

F.A.U. RITE	SECTION	COUNTY	TOTAL SHEETS	SHEET NO.
1578	*	WILL	155	123

STA.	TO STA.
FED. ROAD DIST. NO.	ILLINOIS FED. AID PROJECT

\* 06-00046-00-PF

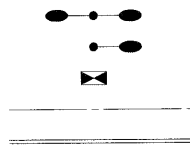
LIGHTING SUMMARY OF QUANTITIES

PAY ITEM NO.	ITEM	UNIT	TOTAL
80400100	ELECTRIC SERVICE INSTALLATION	EACH	2
* 80400200	ELECTRIC UTILITY SERVICE CONNECTION	L SUM	1
81000700	CONDUIT IN TRENCH, 2 1/2" DIA., GALVANIZED STEEL	FOOT	100
81018500	CONDUIT PUSHED, 2" DIA., GALVANIZED STEEL	FOOT	1,266
81018700	CONDUIT PUSHED, 3" DIA., GALVANIZED STEEL	FOOT	60
81603025	UNIT DUCT, 600V, 2-1C NO. 4, 1/C NO. 4 GROUND, (XLP-TYPE USE), 1" DIA. POLYETHYLENE	FOOT	720
81603035	UNIT DUCT, 600V, 2-1C NO. 6, 1/C NO. 6 GROUND, (XLP-TYPE USE), 1" DIA. POLYETHYLENE	FOOT	1,116
81603060	UNIT DUCT, 600V, 3-1C NO. 8, 1/C NO. 8 GROUND, (XLP-TYPE USE), 1" DIA. POLYETHYLENE	FOOT	4,612
81702440	ELECTRIC CABLE IN CONDUIT, 600V (XLP-TYPE USE) 3-1/C NO. 1/0	FOOT	100
81900200	TRENCH AND BACKFILL FOR ELECTRICAL WORK	FOOT	3,303
82102250	LUMINAIRE, SODIUM VAPOR, HORIZONTAL MOUNT, 250 WATT	EACH	34
* 82500505	LIGHTING CONTROLLER, SPECIAL	EACH	2
83007400	LIGHT POLE, ALUMINUM, 35 FT. M.H., 10 FT. MAST ARM	EACH	24
	LIGHT POLE, ALUMINUM, 35 FT. M.H., 10 FT. MAST ARM - TWIN	EACH	4
83007600	LIGHT POLE, ALUMINUM, 35 FT. M.H., 15 FT. MAST ARM	EACH	2
83600200	LIGHT POLE FOUNDATION, 24" DIAMETER	FOOT	520
84200600	REMOVAL OF EXISTING LIGHTING UNIT, NO SALVAGE	EACH	11
84200700	LIGHTING FOUNDATION REMOVAL	EACH	11
* X8730027	ELECTRIC CABLE IN CONDUIT, GROUNDING, NO. 6 1C	FOOT	100

LIGHTING LEGEND

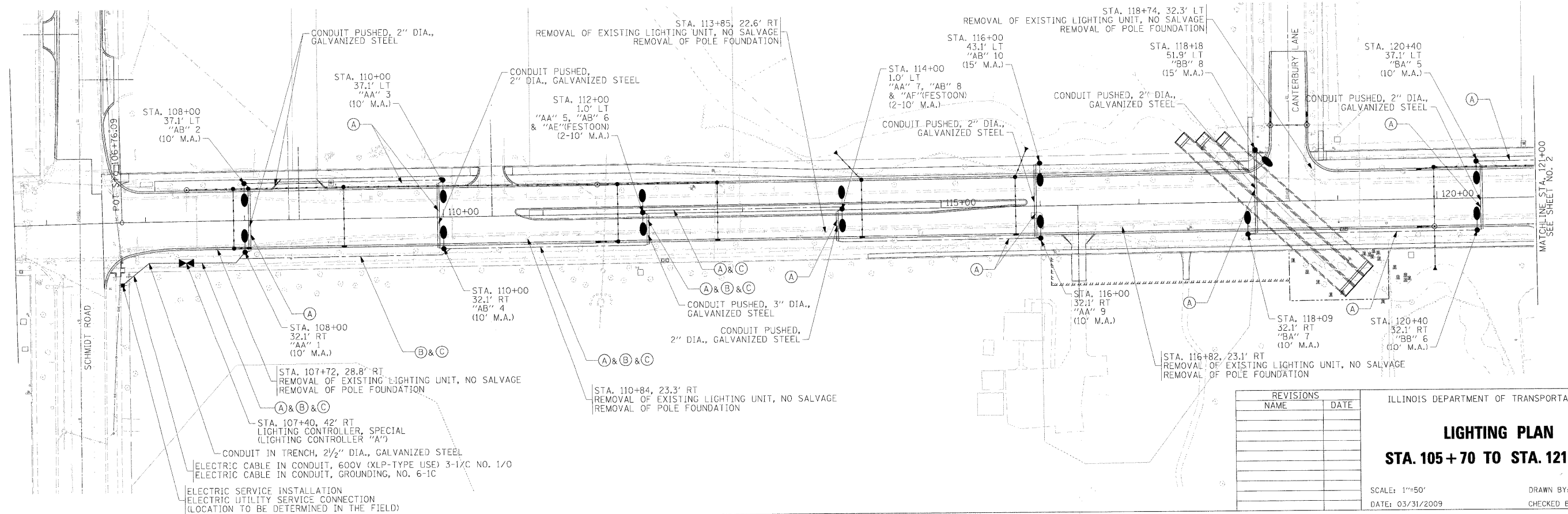
- LIGHT POLE AND LUMINAIRE, TYPE A
- LIGHT POLE AND LUMINAIRE, TYPE B
- LIGHTING CONTROLLER
- UNIT DUCT IN TRENCH
- UNIT DUCT IN CONDUIT (PUSHED)

PROPOSED



UNIT DUCT LEGEND

- (A) UNIT DUCT, 600V, 3-1C NO. 8, 1/C NO. 8 GROUND, (XLP-TYPE USE), 1" DIA. POLYETHYLENE
- (B) UNIT DUCT, 600V, 2-1C NO. 6, 1/C NO. 6 GROUND, (XLP-TYPE USE), 1" DIA. POLYETHYLENE
- (C) UNIT DUCT, 600V, 2-1C NO. 4, 1/C NO. 4 GROUND, (XLP-TYPE USE), 1" DIA. POLYETHYLENE



REVISIONS	
NAME	DATE

ILLINOIS DEPARTMENT OF TRANSPORTATION  
**LIGHTING PLAN**  
**STA. 105+70 TO STA. 121+00**  
 SCALE: 1"=50'  
 DATE: 03/31/2009  
 DRAWN BY: NMR  
 CHECKED BY: DJL

PLOT DATE : 4/9/2009  
 PLOT SCALE : 80.0000 / IN.  
 USER NAME : BAUSER6