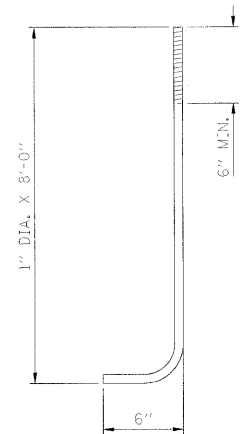
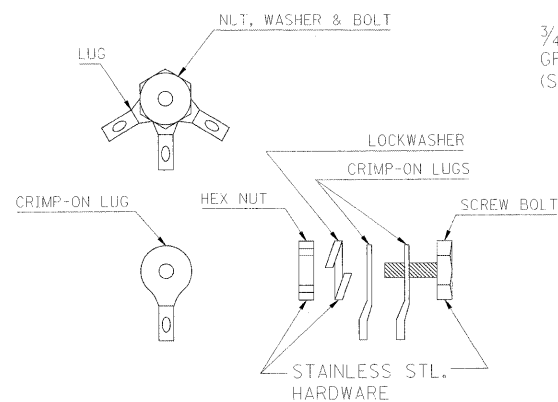


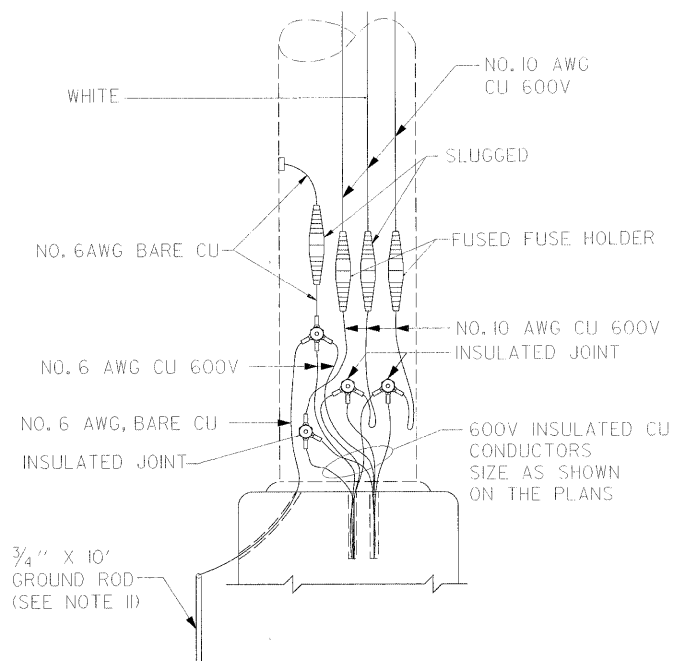
CONTRACT NO.				
F.A.U. RT.	SECTION	COUNTY	TOTAL SHEETS	SHEET NO.
157B	*	WILL	155	126
STA.		TO STA.		
FED. ROAD DIST. NO.	ILLINOIS	FED. AID PROJECT		
* 06-00046-00-PF				



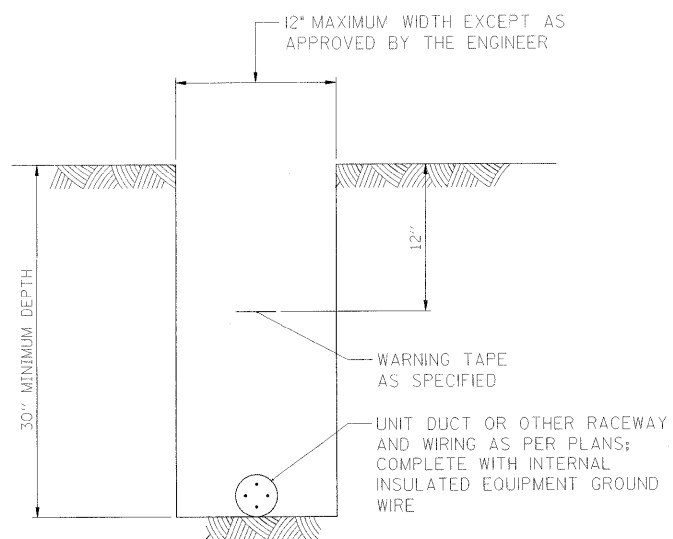
ANCHOR DETAIL
NOT TO SCALE



JOINT ASSEMBLY DETAILS
NOT TO SCALE



POLE BASE WIRING DIAGRAM
NOT TO SCALE



TYPICAL WIRING IN TRENCH DETAIL
NOT TO SCALE

FOUNDATION NOTES:

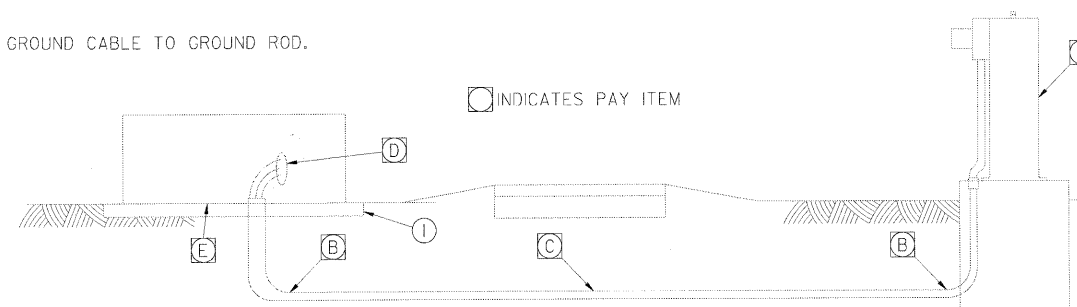
- EXCAVATION OF THE POLE FOUNDATION SHALL BE MADE WITH AN AUGER, 24" IN DIAMETER.
- THE CONTRACTOR SHALL USE #4 SPIRAL 6" PITCH OR AT HIS OPTION MAY SUBSTITUTE #4 TIES AT 12" O/C
- THE ANCHOR SHALL BE A HOOK TYPE BOLT. COLD BENDING OF THE HOOK WILL NOT BE ALLOWED.
- THE ANCHOR BOLTS AND RACEWAYS SHALL BE PROPERLY SECURED IN PLACE PRIOR TO PLACEMENT OF CONCRETE.
- THE ENTIRE LENGTH OF THE ANCHOR BOLTS, AS WELL AS THE NUTS AND WASHERS, SHALL BE HOT DIP GALVANIZED IN ACCORDANCE WITH THE REQUIREMENTS OF ASTM DESIGNATION A 153.
- CONCRETE SHALL BE CLASS "SI". CONCRETE FOUNDATION SHALL BE CURED FOR TEN (10) DAYS BEFORE THE LIGHT STANDARD IS ERECTED.
- THE CABLE TRENCH SHALL BE BACKFILLED AND COMPACTED BEFORE THE LIGHT IS ERECTED.
- ANCHOR BOLTS SHALL PROJECT 2 3/4" ABOVE THE TOP OF THE FOUNDATION (SEE NOTE 10).
- RACEWAYS SHALL PROJECT 1" ABOVE THE TOP OF THE FOUNDATION.
- THE CONTRACTOR SHALL COORDINATE THE EXTENSION OF THE ANCHOR BOLTS ABOVE THE TOP OF FOUNDATION WITH THE MANUFACTURER'S REQUIREMENTS FOR THE BREAKAWAY DEVICE.
- CADWELD NO. 6 BARE COPPER GROUND CABLE TO GROUND ROD.

CONTRACTOR SHALL FURNISH AND INSTALL

- (A) LIGHTING CONTROLLER INCLUDING FOUNDATION AND METER CABINET WITH CONNECTION DEVICES, WIRES AND FITTINGS.
- (B) CONDUIT IN TRENCH - 2 1/2" DIA.
- (C) CONDUIT PUSHED - 2 1/2" DIA., IF REQUIRED
- (D) ELECTRIC CABLE - CABLES FROM INSIDE THE CONTROLLER TO TOP OF STEEL CONDUIT AND ENOUGH CABLE FOR CONNECTION TO THE TRANSFORMER.
- (E) ELECTRIC SERVICE INSTALLATION
- (1) PCC TRANSFORMER PAD

EDISON COMPANY SHALL FURNISH AND INSTALL (FREE OF CHARGE):

- (2) ELECTRIC SERVICE INSTALLATION: TRANSFORMER, CUT-OUT SWITCH, LIGHTNING ARRESTER, GROUNDING EQUIPMENT, INSULATORS, WIRES, HOUSING, HARDWARE AND ANY OTHER EQUIPMENT AND LABOR DEEMED NECESSARY.



ELECTRIC SERVICE INSTALLATION

PLOT DATE = 4/15/2009
FILE NAME = C:\Users\msh\Documents\1025\road\detail\1025_0112.dgn
PLOT SCALE = 1/8" = 1'-0"
USER NAME = MJS/EB

REVISIONS	
NAME	DATE

ILLINOIS DEPARTMENT OF TRANSPORTATION

LIGHTING DETAILS

SCALE: N.T.S.
DATE: 03/31/2009

DRAWN BY: NMR
CHECKED BY: DJL

8/FILES