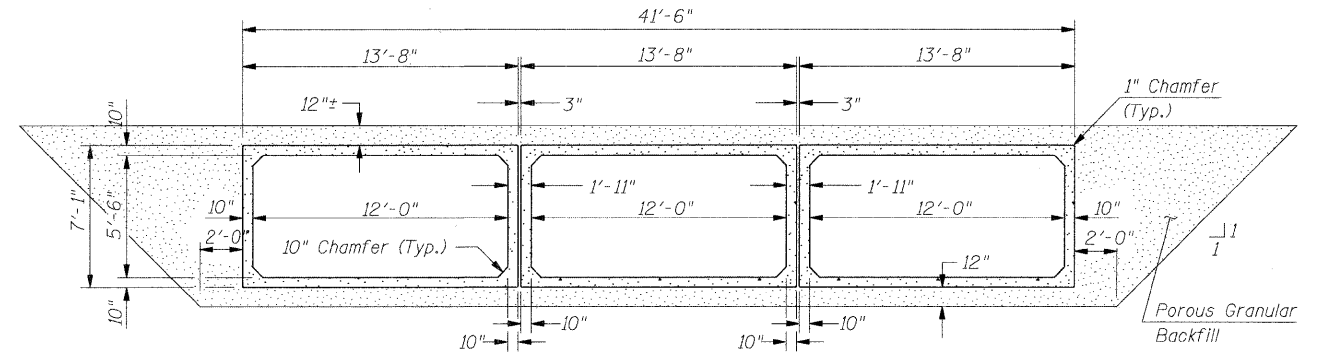
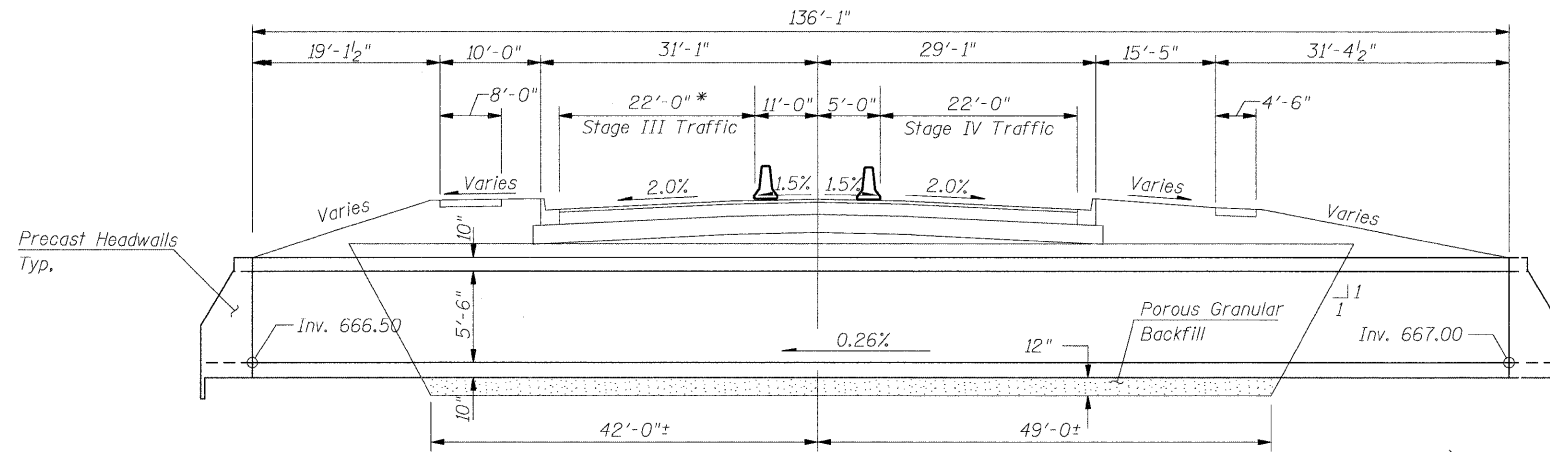


B.M. 30 - Chis. "4" North End of westerly CMP Culvert Lt. Sta. 117+54 Elev. 671.18
 Existing Structure: Triple 7'W x 5'H CMP Elliptical Pipe Culverts

STATE OF ILLINOIS
 DEPARTMENT OF TRANSPORTATION

ROUTE NO.	SECTION	COUNTY	AREA	SHEET NO.	SHEET NO.
1578	*	WILL	155	129	2 SHEETS
FED. ROAD DIST. NO. 7 ILLINOIS FED. AID PROJECT-					
* 06-00046-00-PV					



* Stage III traffic will require temporary widening. See Staging Plans for details.

Dim. at Rt. Angles to \odot Lily Cache
 Measured Along \odot of Culvert

TOTAL BILL OF MATERIAL

ITEM	UNIT	TOTAL
Structure Excavation	Cu. Yd.	2683
Porous Granular Backfill	Cu. Yd.	1113
Temporary Sheet Piling	Sq. Ft.	663
Precast Conc. Box Culverts, 12' x 5.5'	Foot	597
Box Culvert End Sections, Special	Each	6
Name Plates	Each	1

WATERWAY INFORMATION

Drainage Area = 2.1 Sq. Mi. Ex. Low Grade Elev. 671.23 \odot Sta. 111+50
 Pr. Low Grade Elev. 671.00 \odot Sta. 111+75

Flood	Freq. Yr.	Q C.F.S.	Opening Sq. Ft.		Head - Ft.		Headwater El.		
			Exist.	Prop.	H.W.E. Exist.	Prop.	Exist.	Prop.	
Design	10	314	69.0	188.3	672.23	0.00	0.00	671.12	671.32
Base	50	726	71.0	196.9	672.47	0.67	0.44	673.14	672.91
Overtopping	100	902	71.0	198.0	673.23	0.61	0.38	673.84	673.61
Max. Calc.	500	1523	71.0	198.0	675.02	0.00	0.83	674.61	675.85

HIGHWAY CLASSIFICATION

F.A.U. Rte. 1578 - Lily Cache Lane
 Functional Class: Urban Collector
 ADT: 14,678 (2008); 20,366 (2030)
 ADTT: (20); (20)
 DHV: 1450
 Design Speed: 40 m.p.h.
 Posted Speed: 40 m.p.h.

LOADING HS20-44

Allow 50#/sq. ft. for future wearing surface.

DESIGN SPECIFICATIONS

2002 AASHTO

DESIGN STRESSES

FIELD UNITS

f'c = 3,500 psi
 fy = 60,000 psi (reinforcement)

GENERAL PLAN & ELEVATION

LILY CACHE LANE OVER

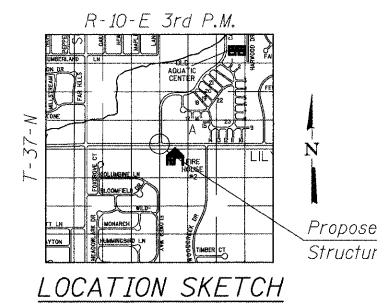
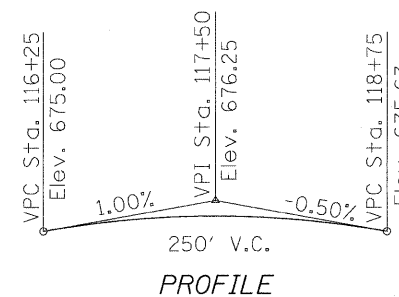
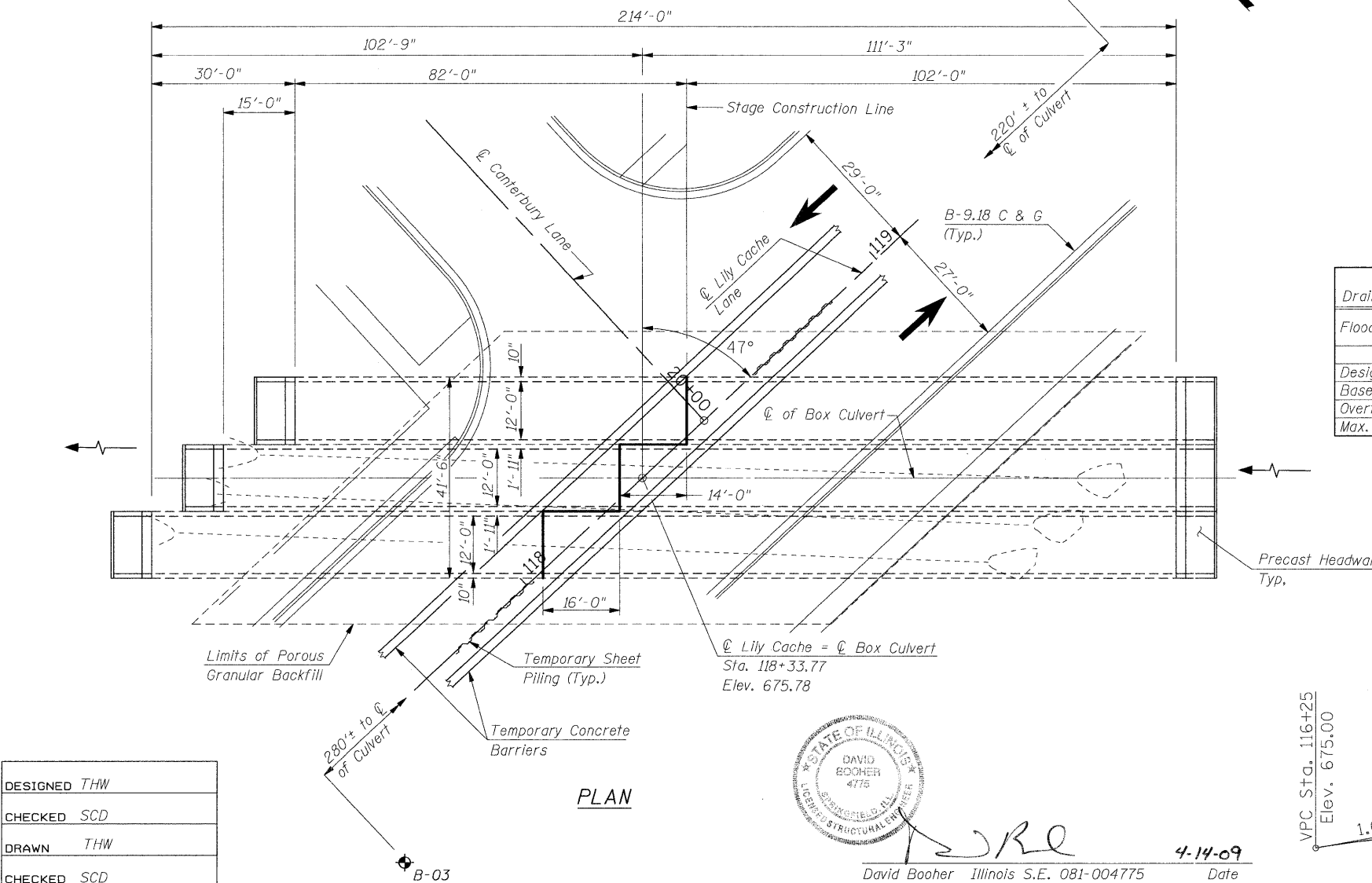
TRIBUTARY TO LILY CACHE CREEK

SEC. 06-00046-00-PV

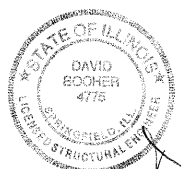
WILL COUNTY

STA. 118+33.77

STRUCTURE NO. 099-6065



DESIGNED THW
CHECKED SCD
DRAWN THW
CHECKED SCD



David Booher Illinois S.E. 081-004775 Date 4-14-09
 Expires 11-30-2010

FILE\$