

STATE OF ILLINOIS
DEPARTMENT OF TRANSPORTATION

ROUTE NO.	SECTION	COUNTY	TOTAL SHEETS	SHEET NO.
157B	*	WILL	155	130
FED. ROAD DIST. NO. 7		ILLINOIS	FED. AID PROJECT-	

* 06-00046-00-PV

psi Information
To Build On
Engineering • Consulting • Testing

SOIL BORING LOG Page 1 of 1
Date 8/22/06

ROUTE Lily Cache Lane DESCRIPTION PSI Project No. 042-65043 LOGGED BY TD
SECTION LOCATION SEC. TWP. RNG.
COUNTY DuPage DRILLING METHOD 3.25" Hollow Stem Augers HAMMER TYPE Automatic Hammer

STRUCT. NO. Station	DEPTH ft	BULGE B	SHEAR S	PENETROMETER P	UCS psi	Failure Mode	Surface Water Elev.		Stream Bed Elev.		Groundwater Elev.	
							Before	After	Before	After	Before	After
	20											
	30				8.0							
	25											
	27											
	9											
	11				>4.5	22.0						
	12			P								
	13											
	5											
	8											
	6											
	10											
	4											
	5			P	2.5	18.0						
	7											
	4											
	5			P	3.3	20.0						
	6											
	13			P								
	9											
	-10											
	-11											
	-12											
	-13											
	-14											
	-15											
	-16											
	-17											
	-18											
	-19											
	-20											

Dark brown silty CLAY, trace fine to coarse sand, trace organic (TOPSOIL)
Mottled brown orange silty CLAY, trace fine to medium sand, very stiff, moist, LL=46, PI=22
Brown silty CLAY, trace fine sand, very stiff, moist
END OF BORING AT 10 FEET
End of Boring

The Unconfined Compressive Strength (UCS) Failure Mode is indicated by (B-Bulge, S-Shear, P-Penetrometer)
The SPT (N value) is the sum of the last two blow values in each sampling zone (AASHTO T208)
BBS, from 137 (Rev. 8-99)

psi Information
To Build On
Engineering • Consulting • Testing

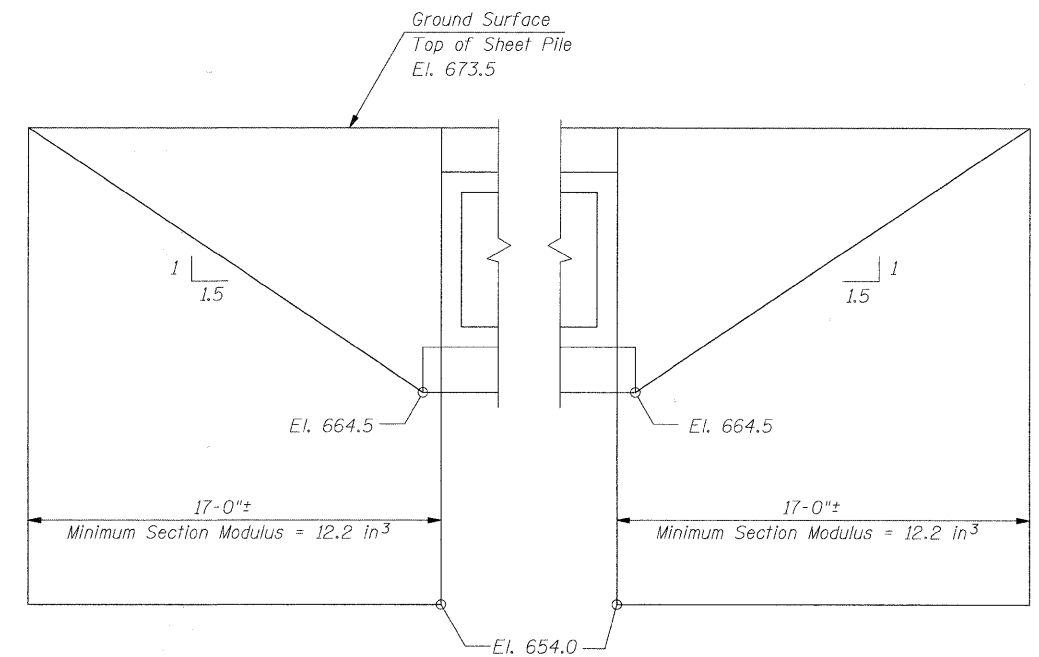
SOIL BORING LOG Page 1 of 1
Date 8/22/06

ROUTE Lily Cache Lane DESCRIPTION PSI Project No. 042-65043 LOGGED BY TD
SECTION LOCATION SEC. TWP. RNG.
COUNTY DuPage DRILLING METHOD 3.25" Hollow Stem Augers HAMMER TYPE Automatic Hammer

STRUCT. NO. Station	DEPTH ft	BULGE B	SHEAR S	PENETROMETER P	UCS psi	Failure Mode	Surface Water Elev.		Stream Bed Elev.		Groundwater Elev.	
							Before	After	Before	After	Before	After
	9											
	10				14.0							
	11											
	14											
	7											
	9			P	2.5	17.0						
	5											
	2											
	2			P	1.0	27.0						
	3											
	2											
	6			P	1.5	26.0						
	4											
	2											
	4											
	7			P	4.0	16.0						
	13			P								
	9											
	-10											
	-11											
	-12											
	-13											
	-14											
	-15											
	-16											
	-17											
	-18											
	-19											
	-20											

Dark brown silty CLAY, trace fine to coarse sand, trace organic (TOPSOIL)
FILL: Black silty CLAY, trace fine sand, trace organic, medium stiff, moist, 1.2% organic content
FILL: Black silty CLAY, trace organics, fine to medium sand, and gravel, medium stiff, very moist, 1.3% organic content
Black decomposed organic CLAY, medium stiff, very moist
Gray silty CLAY, with fine to coarse sand, hard, moist
END OF BORING AT 10 FEET
End of Boring

The Unconfined Compressive Strength (UCS) Failure Mode is indicated by (B-Bulge, S-Shear, P-Penetrometer)
The SPT (N value) is the sum of the last two blow values in each sampling zone (AASHTO T208)
BBS, from 137 (Rev. 8-99)



TEMPORARY SHEET PILING
(663 S.F.)

DESIGNED	THW
CHECKED	SCD
DRAWN	THW
CHECKED	SCD

SOIL BORINGS &
TEMPORARY SHEET PILING DETAIL
LILY CACHE LANE OVER
TRIBUTARY TO LILY CACHE CREEK
SEC. 06-00046-00-PV
WILL COUNTY
STA. 118+33.77
STRUCTURE NO. 099-6065