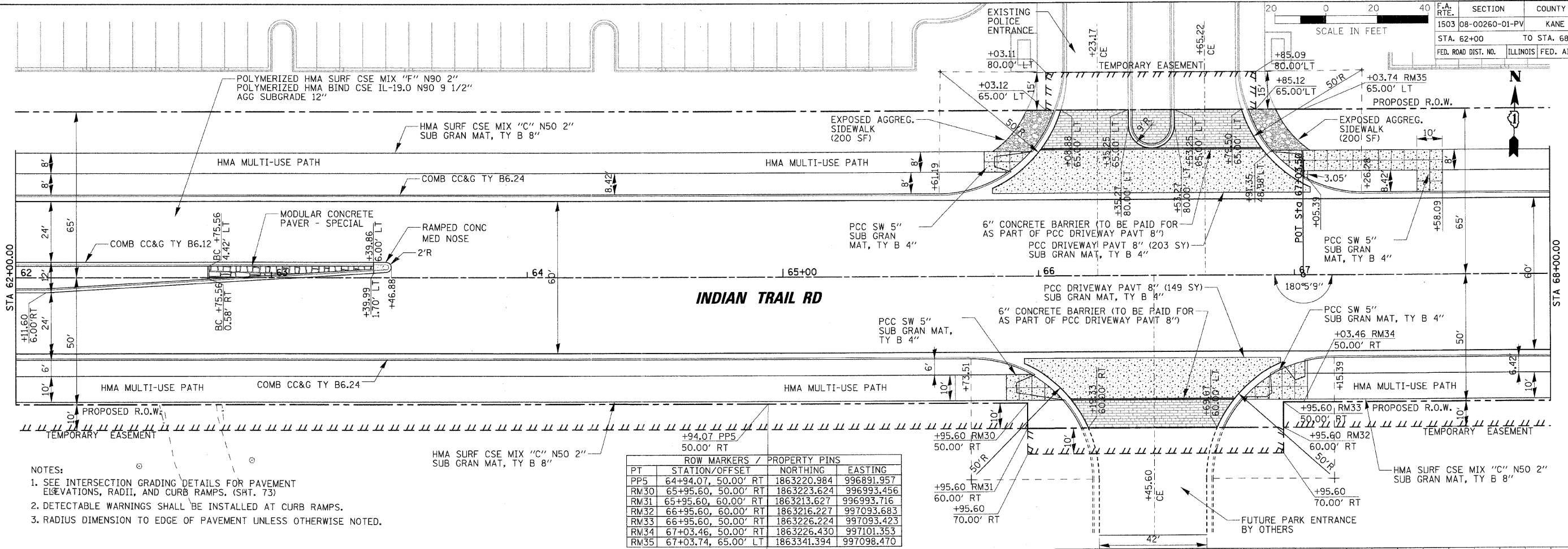
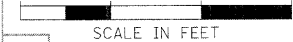


F.A. RTE.	SECTION	COUNTY	TOTAL SHEETS	SHEET NO.
1503	08-00260-01-PV	KANE	176	37
STA. 62+00		TO STA. 68+00		
FED. ROAD DIST. NO.	ILLINOIS FED. AID PROJECT			



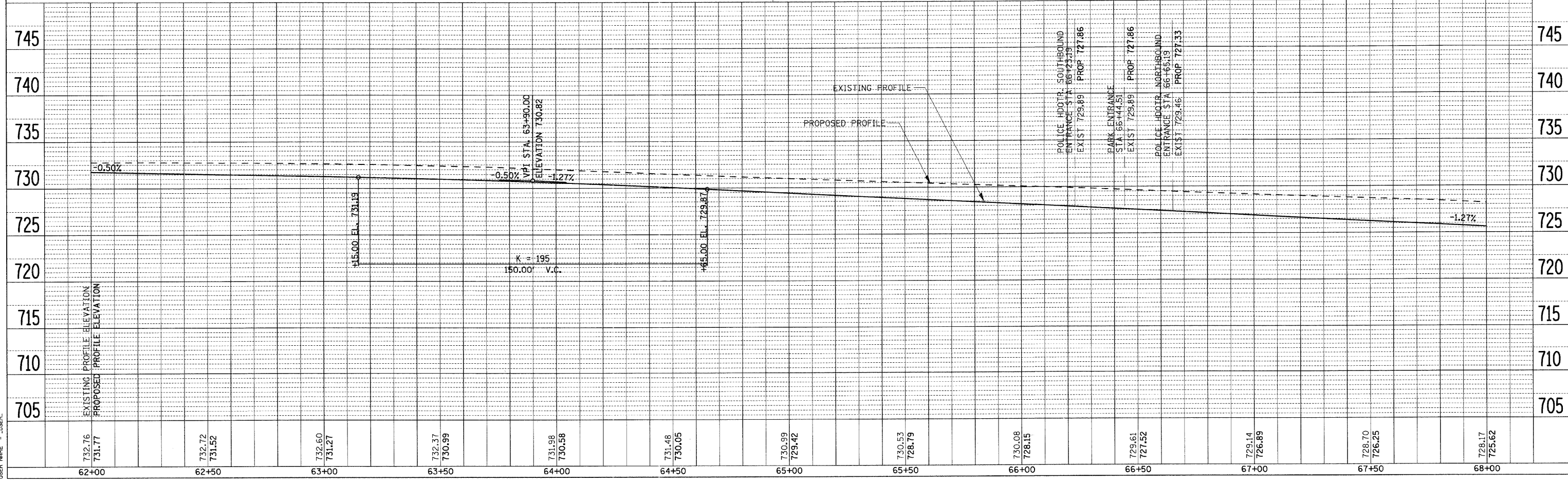
- NOTES:
- SEE INTERSECTION GRADING DETAILS FOR PAVEMENT ELEVATIONS, RADII, AND CURB RAMPS. (SHT. 73)
 - DETECTABLE WARNINGS SHALL BE INSTALLED AT CURB RAMPS.
 - RADIUS DIMENSION TO EDGE OF PAVEMENT UNLESS OTHERWISE NOTED.

ROW MARKERS / PROPERTY PINS			
PT	STATION/OFFSET	NORTHING	EASTING
PP5	64+94.07, 50.00' RT	1863220.984	996891.957
RM30	65+95.60, 50.00' RT	1863223.624	996993.456
RM31	65+95.60, 60.00' RT	1863213.627	996993.716
RM32	66+95.60, 60.00' RT	1863216.227	997093.683
RM33	66+95.60, 50.00' RT	1863226.224	997093.423
RM34	67+03.46, 50.00' RT	1863226.430	997101.353
RM35	67+03.74, 65.00' LT	1863341.394	997098.470

PLAN	DATE
BY	
REVISIONS	
NO.	

PROFILE	DATE
BY	
REVISIONS	
NO.	

PLOT DATE = 6/26/2009
 PLOT SCALE = 1" = 20'
 USER NAME = JUSER



STATION	EXISTING PROFILE ELEVATION	PROPOSED PROFILE ELEVATION
62+00	732.76	731.77
62+50	732.72	731.52
63+00	732.60	731.27
63+50	732.37	730.99
64+00	731.98	730.58
64+50	731.48	730.05
65+00	730.99	729.42
65+50	730.53	728.79
66+00	730.08	728.15
66+50	729.61	727.52
67+00	729.14	726.89
67+50	728.70	726.25
68+00	728.17	725.62