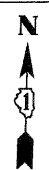
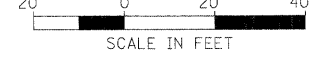
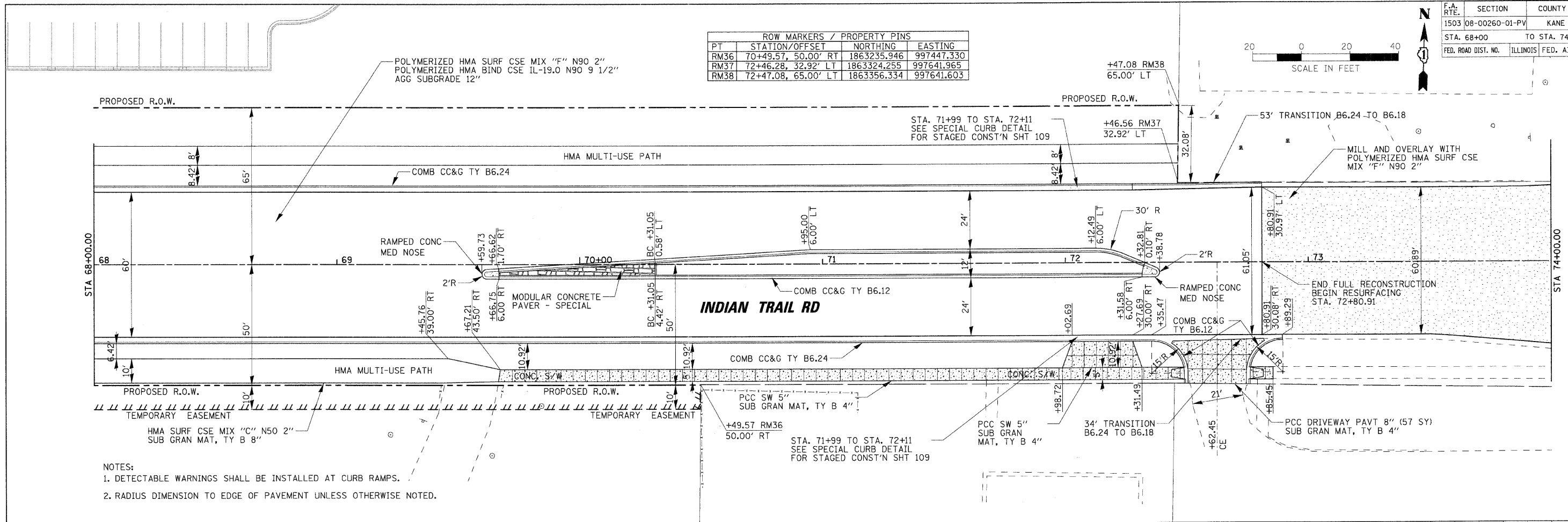


F.A. RTE.	SECTION	COUNTY	TOTAL SHEETS	SHEET NO.
1503	08-00260-01-PV	KANE	176	38
STA. 68+00		TO STA. 74+00		
FED. ROAD DIST. NO.	ILLINOIS	FED. AID PROJECT		

ROW MARKERS / PROPERTY PINS			
PT	STATION/OFFSET	NORTHING	EASTING
RM36	70+49.57, 50.00' RT	1863235.946	997447.330
RM37	72+46.28, 32.92' LT	1863324.255	997641.965
RM38	72+47.08, 65.00' LT	1863356.334	997641.603

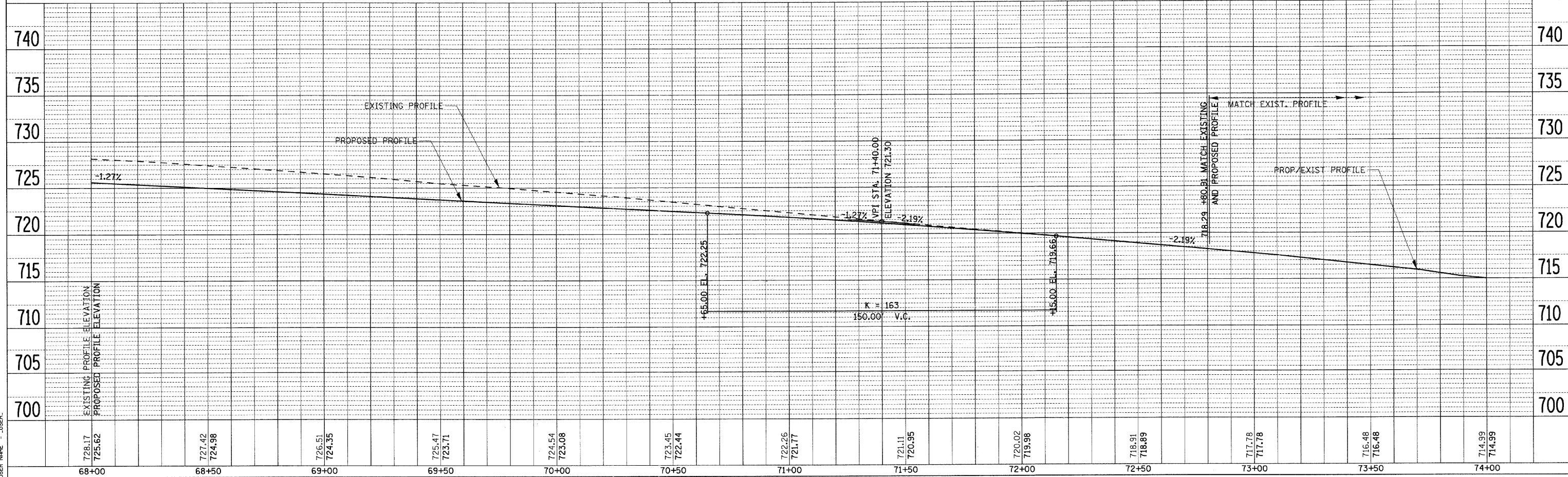


PLAN	DATE
BY	
REVISIONS	
NO.	



- NOTES:
1. DETECTABLE WARNINGS SHALL BE INSTALLED AT CURB RAMPS.
  2. RADIUS DIMENSION TO EDGE OF PAVEMENT UNLESS OTHERWISE NOTED.

PROFILE	DATE
BY	
REVISIONS	
NO.	



PLOT DATE = 6/26/2009  
 PLOT SCALE = 1" = 20'  
 USER NAME = JUSER