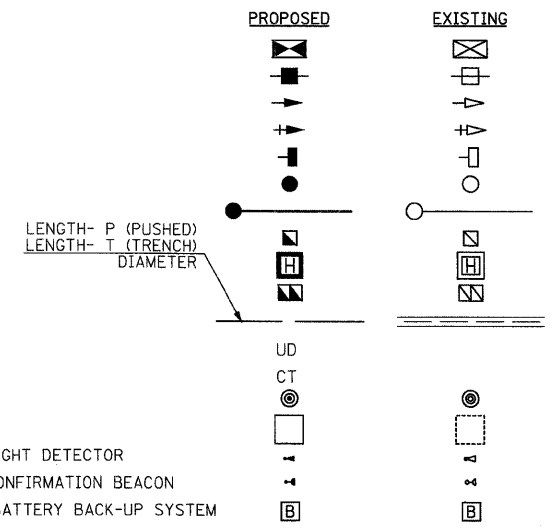


F.A.U. RTE.	SECTION	COUNTY	TOTAL SHEETS	SHEET NO.
1503	08-00260-01-PV	KANE	176	88
STA.		TO STA.		
FED. ROAD DIST. NO.		ILLINOIS FED. AID PROJECT		

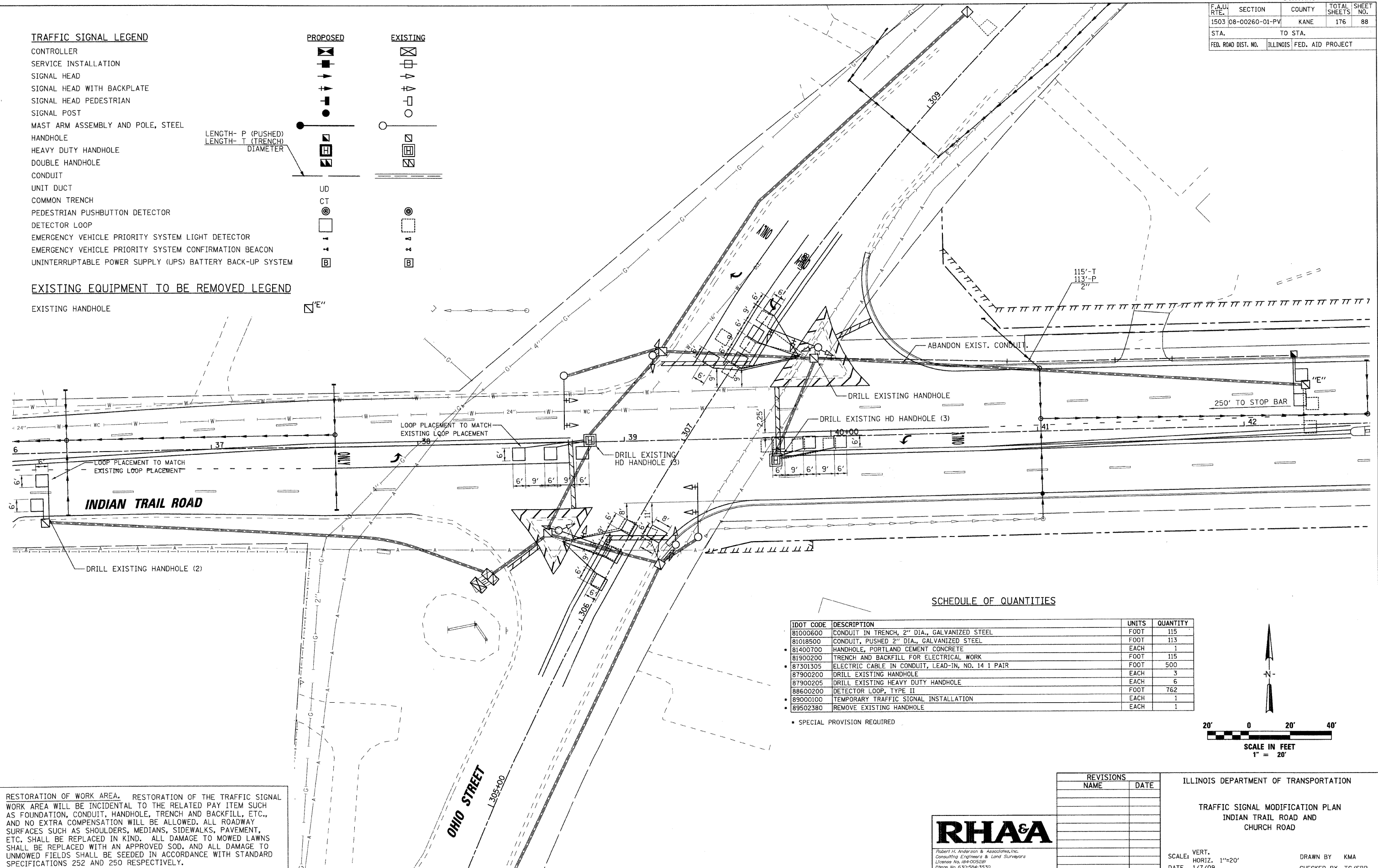
TRAFFIC SIGNAL LEGEND

- CONTROLLER
- SERVICE INSTALLATION
- SIGNAL HEAD
- SIGNAL HEAD WITH BACKPLATE
- SIGNAL HEAD PEDESTRIAN
- SIGNAL POST
- MAST ARM ASSEMBLY AND POLE, STEEL
- HANDHOLE
- HEAVY DUTY HANDHOLE
- DOUBLE HANDHOLE
- CONDUIT
- UNIT DUCT
- COMMON TRENCH
- PEDESTRIAN PUSHBUTTON DETECTOR
- DETECTOR LOOP
- EMERGENCY VEHICLE PRIORITY SYSTEM LIGHT DETECTOR
- EMERGENCY VEHICLE PRIORITY SYSTEM CONFIRMATION BEACON
- UNINTERRUPTABLE POWER SUPPLY (UPS) BATTERY BACK-UP SYSTEM



EXISTING EQUIPMENT TO BE REMOVED LEGEND

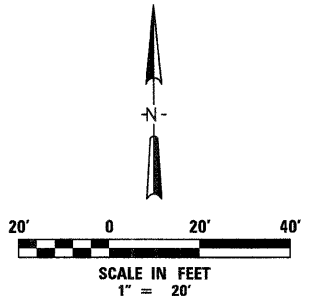
- EXISTING HANDHOLE



SCHEDULE OF QUANTITIES

IDOT CODE	DESCRIPTION	UNITS	QUANTITY
81000600	CONDUIT IN TRENCH, 2" DIA., GALVANIZED STEEL	FOOT	115
81018500	CONDUIT, PUSHED 2" DIA., GALVANIZED STEEL	FOOT	113
81400700	HANDHOLE, PORTLAND CEMENT CONCRETE	EACH	1
81900200	TRENCH AND BACKFILL FOR ELECTRICAL WORK	FOOT	115
87301305	ELECTRIC CABLE IN CONDUIT, LEAD-IN, NO. 14 1 PAIR	FOOT	500
87900200	DRILL EXISTING HANDHOLE	EACH	3
87900205	DRILL EXISTING HEAVY DUTY HANDHOLE	EACH	6
88600200	DETECTOR LOOP, TYPE II	FOOT	762
89000100	TEMPORARY TRAFFIC SIGNAL INSTALLATION	EACH	1
89502380	REMOVE EXISTING HANDHOLE	EACH	1

• SPECIAL PROVISION REQUIRED



RESTORATION OF WORK AREA. RESTORATION OF THE TRAFFIC SIGNAL WORK AREA WILL BE INCIDENTAL TO THE RELATED PAY ITEM SUCH AS FOUNDATION, CONDUIT, HANDHOLE, TRENCH AND BACKFILL, ETC., AND NO EXTRA COMPENSATION WILL BE ALLOWED. ALL ROADWAY SURFACES SUCH AS SHOULDERS, MEDIANS, SIDEWALKS, PAVEMENT, ETC. SHALL BE REPLACED IN KIND. ALL DAMAGE TO MOWED LAWNS SHALL BE REPLACED WITH AN APPROVED SOD, AND ALL DAMAGE TO UNMOWED FIELDS SHALL BE SEEDING IN ACCORDANCE WITH STANDARD SPECIFICATIONS 252 AND 250 RESPECTIVELY.

REVISIONS		ILLINOIS DEPARTMENT OF TRANSPORTATION
NAME	DATE	
		<p>TRAFFIC SIGNAL MODIFICATION PLAN INDIAN TRAIL ROAD AND CHURCH ROAD</p> <p>SCALE: VERT. 1"=20' HORIZ. 1"=20' DATE 1/7/09</p> <p>DRAWN BY KMA CHECKED BY TC/SBP</p>

RHA&A
Robert H. Anderson & Associates, Inc.
 Consulting Engineers & Land Surveyors
 License No. 064-005289
 Phone No. 630-594-3530

PLOT DATE = 1/5/2009
 FILE NAME = H:\A\120805\120805.LTR\INDCT\11\SH1\Signal.Ch4.dgn
 PLOT SCALE = 1"=20'
 USER NAME = USER