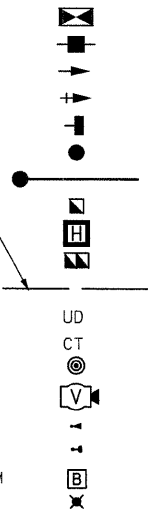


F.A.U. RTE.	SECTION	COUNTY	TOTAL SHEETS	SHEET NO.
1503	08-00260-01-PV	KANE	176	89
STA.		TO STA.		
FED. ROAD DIST. NO.		ILLINOIS FED. AID PROJECT		

**TRAFFIC SIGNAL LEGEND**

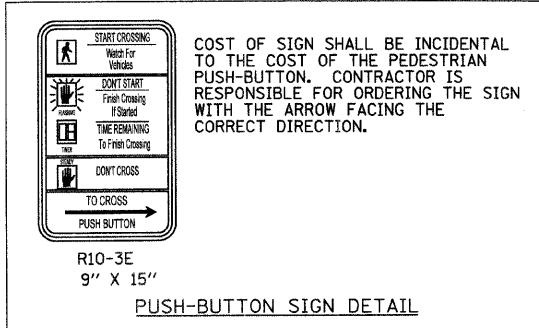
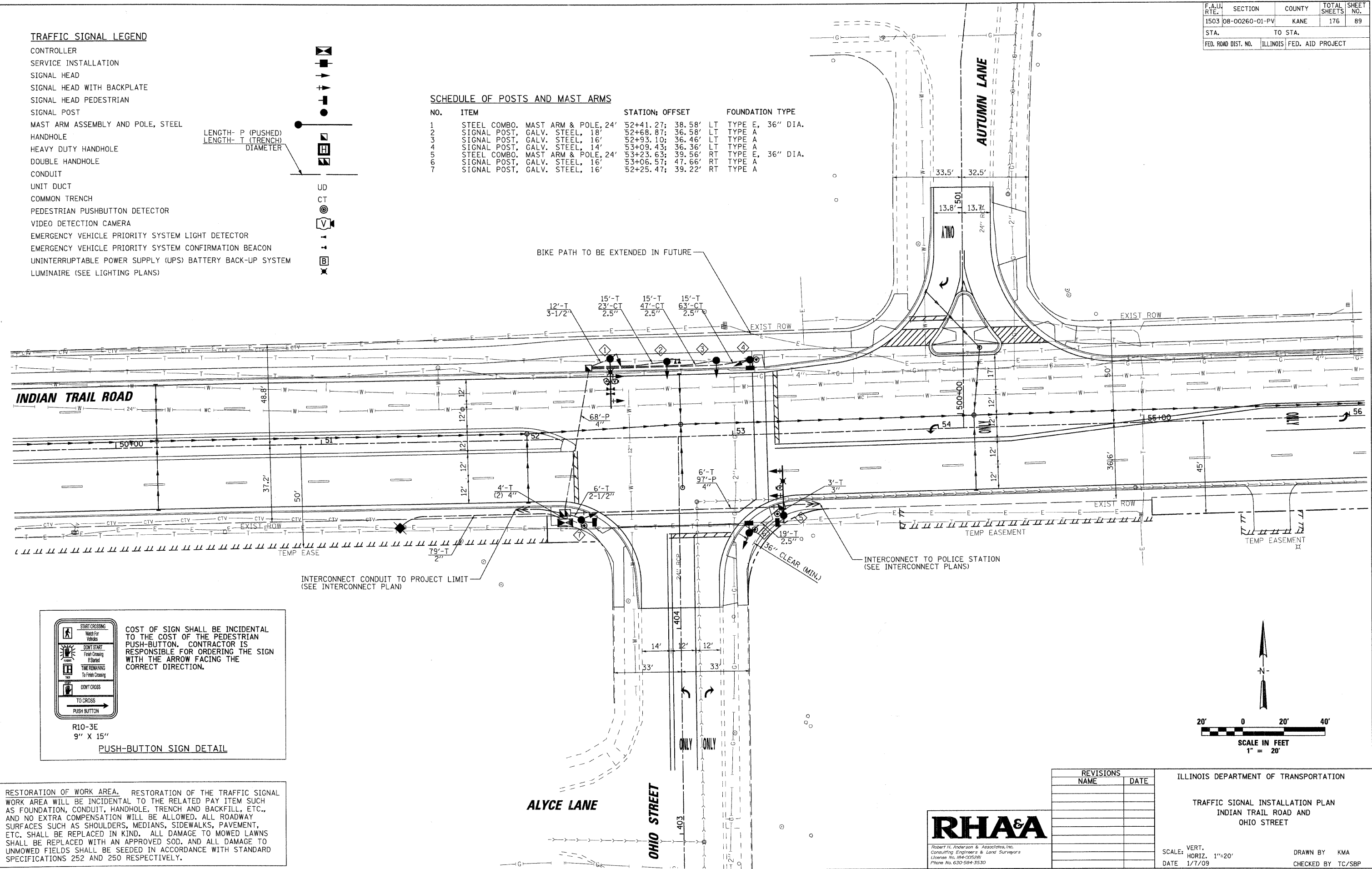
- CONTROLLER
- SERVICE INSTALLATION
- SIGNAL HEAD
- SIGNAL HEAD WITH BACKPLATE
- SIGNAL HEAD PEDESTRIAN
- SIGNAL POST
- MAST ARM ASSEMBLY AND POLE, STEEL
- HANDHOLE
- HEAVY DUTY HANDHOLE
- DOUBLE HANDHOLE
- CONDUIT
- UNIT DUCT
- COMMON TRENCH
- PEDESTRIAN PUSHBUTTON DETECTOR
- VIDEO DETECTION CAMERA
- EMERGENCY VEHICLE PRIORITY SYSTEM LIGHT DETECTOR
- EMERGENCY VEHICLE PRIORITY SYSTEM CONFIRMATION BEACON
- UNINTERRUPTABLE POWER SUPPLY (UPS) BATTERY BACK-UP SYSTEM
- LUMINAIRE (SEE LIGHTING PLANS)

LENGTH- P (PUSHED)  
LENGTH- T (TRENCH)  
DIAMETER



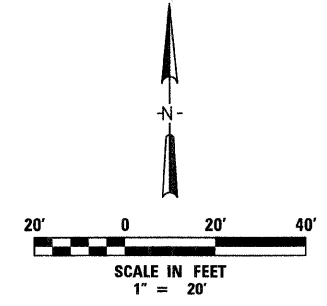
**SCHEDULE OF POSTS AND MAST ARMS**

NO.	ITEM	STATION; OFFSET	FOUNDATION TYPE
1	STEEL COMBO. MAST ARM & POLE, 24'	52+41.27; 38.58' LT	TYPE E, 36" DIA.
2	SIGNAL POST, GALV. STEEL, 18'	52+68.87; 36.58' LT	TYPE A
3	SIGNAL POST, GALV. STEEL, 16'	52+93.10; 36.46' LT	TYPE A
4	SIGNAL POST, GALV. STEEL, 14'	53+09.43; 36.36' LT	TYPE A
5	STEEL COMBO. MAST ARM & POLE, 24'	53+23.63; 39.56' RT	TYPE E, 36" DIA.
6	SIGNAL POST, GALV. STEEL, 16'	53+06.57; 47.66' RT	TYPE A
7	SIGNAL POST, GALV. STEEL, 16'	52+25.47; 39.22' RT	TYPE A



COST OF SIGN SHALL BE INCIDENTAL TO THE COST OF THE PEDESTRIAN PUSH-BUTTON. CONTRACTOR IS RESPONSIBLE FOR ORDERING THE SIGN WITH THE ARROW FACING THE CORRECT DIRECTION.

RESTORATION OF WORK AREA. RESTORATION OF THE TRAFFIC SIGNAL WORK AREA WILL BE INCIDENTAL TO THE RELATED PAY ITEM SUCH AS FOUNDATION, CONDUIT, HANDHOLE, TRENCH AND BACKFILL, ETC., AND NO EXTRA COMPENSATION WILL BE ALLOWED. ALL ROADWAY SURFACES SUCH AS SHOULDERS, MEDIANS, SIDEWALKS, PAVEMENT, ETC. SHALL BE REPLACED IN KIND. ALL DAMAGE TO MOWED LAWNS SHALL BE REPLACED WITH AN APPROVED SOD. AND ALL DAMAGE TO UNMOWED FIELDS SHALL BE SEEDING IN ACCORDANCE WITH STANDARD SPECIFICATIONS 252 AND 250 RESPECTIVELY.



REVISIONS		ILLINOIS DEPARTMENT OF TRANSPORTATION
NAME	DATE	
		<b>TRAFFIC SIGNAL INSTALLATION PLAN</b> INDIAN TRAIL ROAD AND OHIO STREET  SCALE: VERT. 1"=20' HORIZ. 1"=20' DATE 1/7/09 DRAWN BY KMA CHECKED BY TC/SBP

**RHAA**  
 Robert H. Anderson & Associates, Inc.  
 Consulting Engineers & Land Surveyors  
 License No. 064-005991  
 Phone No. 630-584-3530

PLOT DATE = 1/5/2009  
 FILE NAME = H:\A\mcp\1208895\_117\PLN\Civil\Shk\SIGNAL.DGN  
 PLOT SCALE = 1"=20'  
 USER NAME = JUSER