

F.A.U. RTE.	SECTION	COUNTY	TOTAL SHEETS	SHEET NO.
1503	08-00260-01-PV	KANE	176	108
STA.		TO STA.		
FED. ROAD DIST. NO.	ILLINOIS	FED. AID PROJECT		

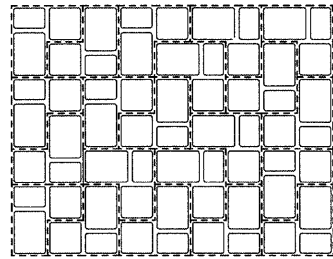
STRUCTURAL DESIGN OF UNILOC ECO-OPTILOC PAVEMENT

STRUCTURAL NUMBERS (SN):
(STRUCTURAL NUMBERS VARY DEPENDING ON THE SPECIFICATIONS OF THE INDIVIDUAL PRODUCT. THESE NUMBERS ARE CONSERVATIVE FOR THE PURPOSE OF PROVIDING THE BEST POSSIBLE PRODUCT)

CONCRETE =	0.50
UNILOC ECO-OPTILOC =	0.50
ASPHALT SURFACE COURSE =	0.40
ASPHALT BASE COURSE =	0.30
ROCK BASE =	0.10

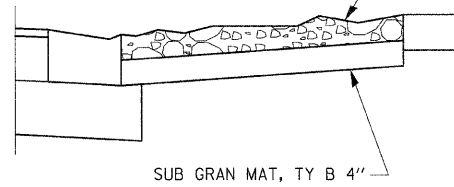
UNILOC ECO-OPTILOC - 3" PAVER BLOCK
ON 2" CA-17 ROCK ON 17" CA-7 ROCK

SN = 3" x 0.50 + 19" x 0.10 = 3.4



PAVERS MUST BE INSTALLED PER UNILOC SPECIFICATIONS AND LAYING PATTERNS

EXPOSED AGGREGATE CONCRETE. (5" THICKNESS)
COLOR AND WHITE AGGREGATE TO BE INTEGRAL TO THE CONCRETE MIX.



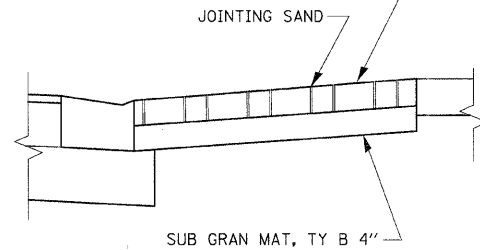
EXPOSED AGGREGATE CONCRETE SIDEWALK

EXPOSED AGGREGATE SIDEWALK DESIGN NOTES

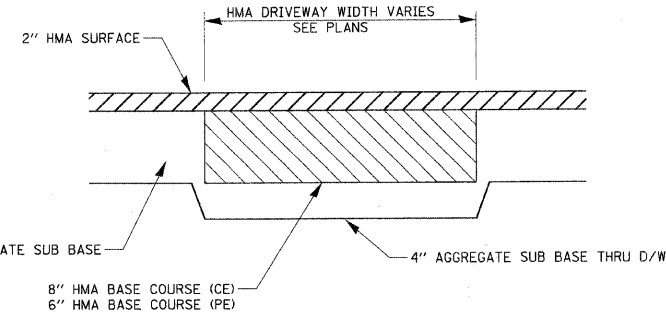
Color: Scofield Integral Color SG, SG084-2 Wheat Fields
Retarder: "Top Cast" No. Code 50 by Grace Construction Products
Curing Agent: Curesal S with Anti-skid Agent
Anti-Skid Agent: Ozinga Grip at 16 oz / 5 gal of Curesal
•Course Aggregate: CA#7 from Vulcan's McCook Quarry
Design Mix:

Ozinga Design Mix - 1097
Strength at 28 days - 4,000 PSI
Slump Range - 4" 35/64 1"
Air Content - 5% 35/64 1"
Cement - 470 lb Type 1, ASTM C150
Fly Ash - 100 lb, ASTM C618
Fine Aggregate - 1,360 lb / cy, #2 Natural Sand, ASTM C33
•Course Aggregate - 1,750 lb / cy, CA#7, ASTM C33
Water - 260 lbs / cy, ASTM C94 Potable
Water Reducing Agent - 14.1 oz / cy, ASTM C494, Type A/D

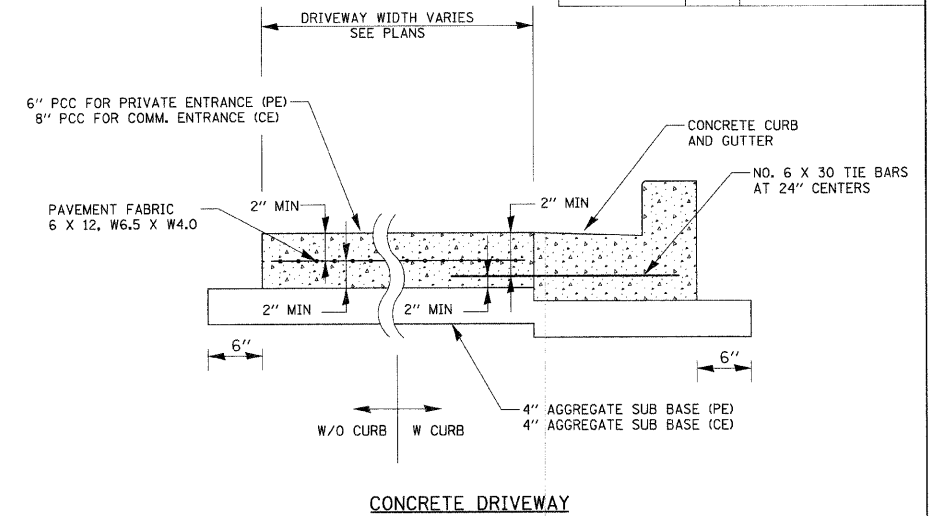
BRICK PAVER SIDEWALK (2 3/8" PAVERS)



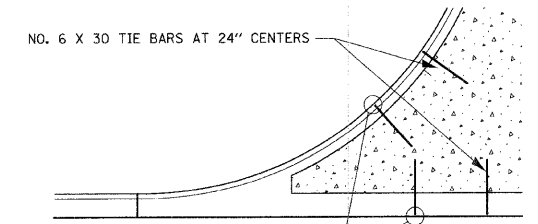
CONCRETE PAVER SIDEWALK SECTION



HMA PATH AT DRIVEWAY CROSSING



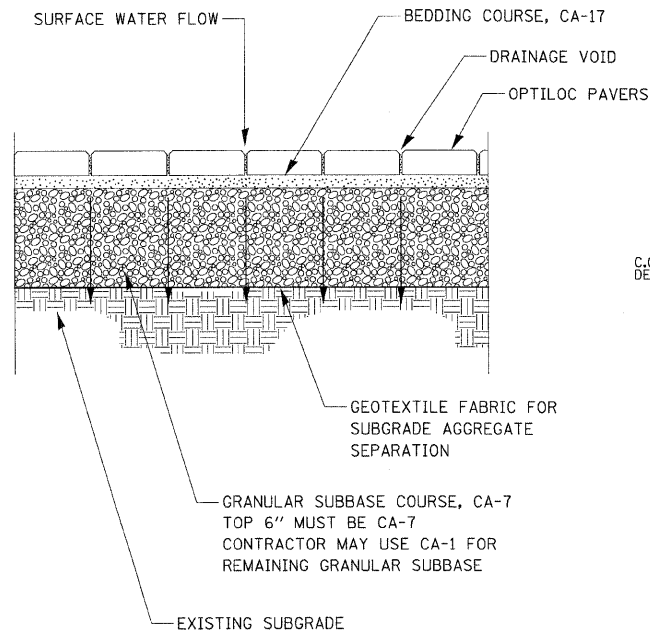
CONCRETE DRIVEWAY



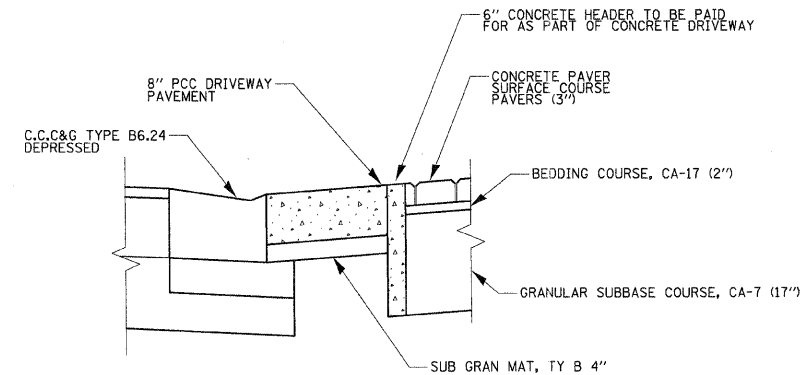
A MINIMUM CLEARANCE OF 2" BETWEEN THE END OF THE TIE BAR AND THE OUTSIDE FACE OF THE CURB SHALL BE MAINTAINED.

TIE BARS FOR CONCRETE DRIVEWAY WITH ADJACENT CURB AND GUTTER

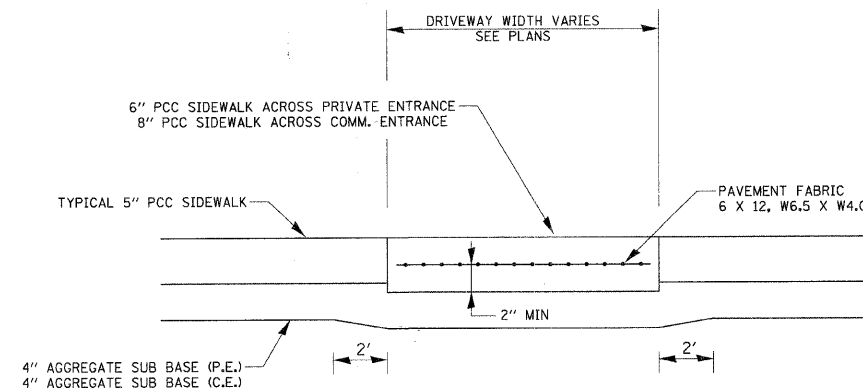
CONCRETE COMMERCIAL ENTRANCE



PERMIABLE CONCRETE PAVER SURFACE



SECTION AT POLICE HEADQUARTERS AND PARK ENTRANCE



SIDEWALK CROSSING DRIVEWAY

REVISIONS	
NAME	DATE

ILLINOIS DEPARTMENT OF TRANSPORTATION
CONSTRUCTION DETAILS

SCALE: VERT. NONE
DATE: 1/7/09

DRAWN BY
CHECKED BY TC/SBP

RHAA
Robert H. Anderson & Associates, Inc.
Consulting Engineers & Land Surveyors
License No. 084-005291
Phone No. 630-584-3530