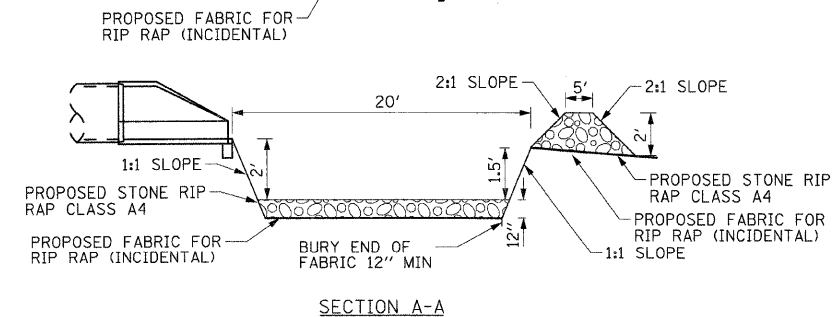
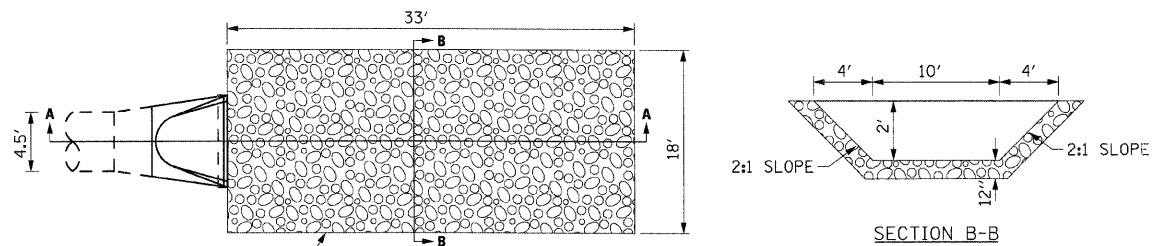
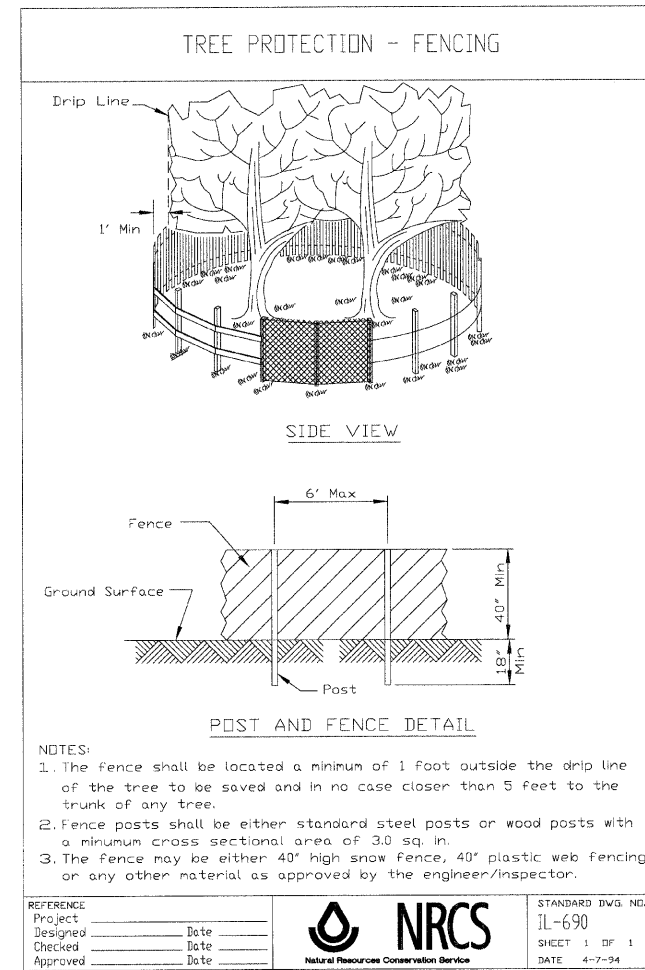
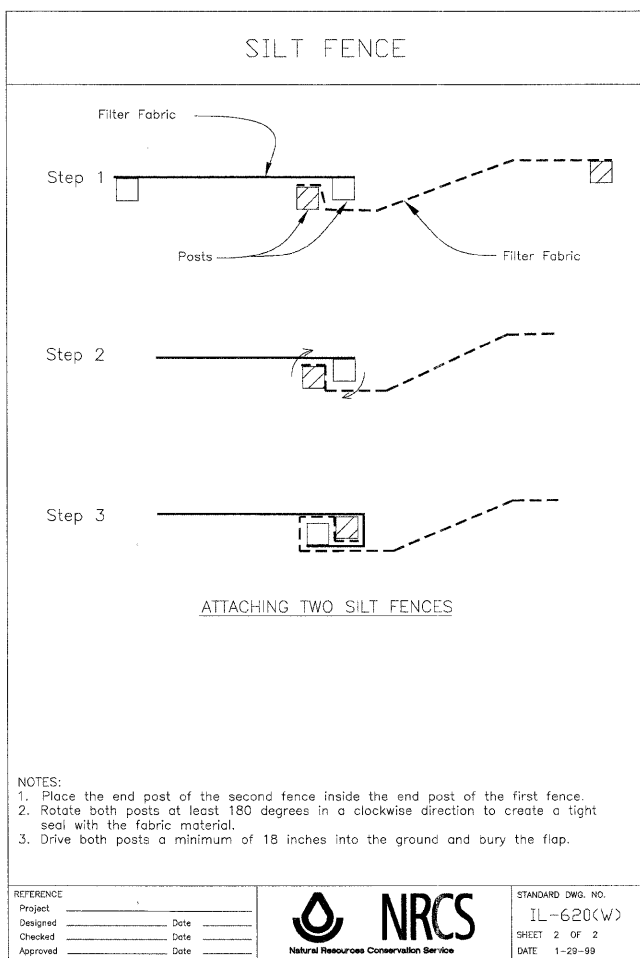
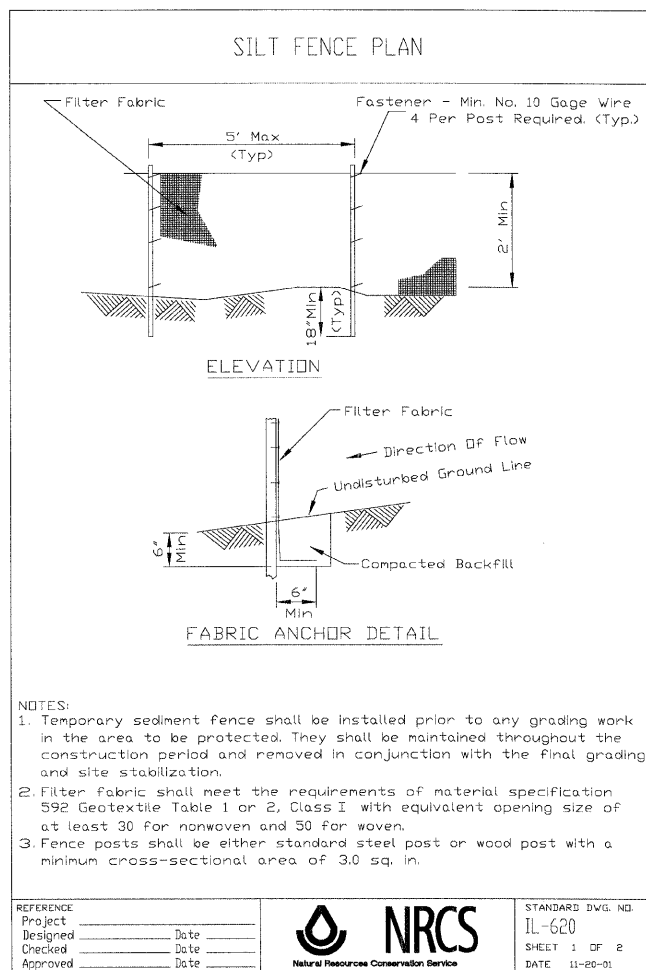
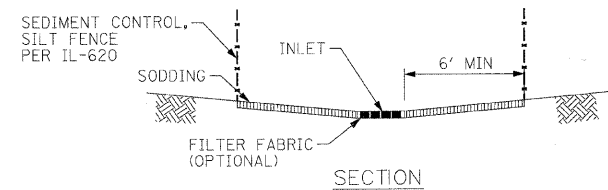
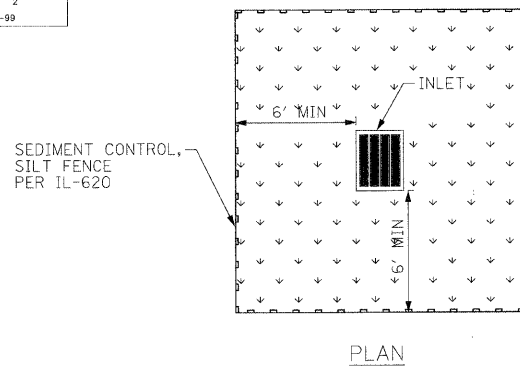


F.A.U. RTE.	SECTION	COUNTY	TOTAL SHEETS	SHEET NO.
1503	08-00260-01-PV	KANE	176	115
STA.		TO STA.		
FED. ROAD DIST. NO.	ILLINOIS	FED. AID PROJECT		



- NOTES:
- THE FILTER FABRIC SHALL MEET THE REQUIREMENTS IN NRCS MATERIAL
  - THE ROCK RIPRAP SHALL MEET THE IDOT REQUIREMENTS FOR THE FOLLOWING GRAD. NO. 4, QUALITY DESIGNATION A.
  - THE RIPRAP SHALL BE PLACED ACCORDING TO NRCS CONSTRUCTION SPECIFICATION 61 ROCK RIPRAP. THE ROCK MAY BE EQUIPMENT PLACED.

TEMPORARY SEDIMENT TRAP



- NOTES:
- THE SOD SHOULD BE FLUSH WITH SURROUNDING GROUND SURFACE.
  - IF USED, FILTER FABRIC SHALL MEET THE REQUIREMENTS OF MATERIAL SPECIFICATION 592 GEOTEXTILE TABLE 1 OR 2, CLASS 1 WITH AOS OF AT LEAST 30 FOR NONWOVEN AND 50 FOR WOVEN.

INLET PROTECTION SOD FILTER PLAN

PLOT DATE = 1/5/2009  
FILE NAME = H:\Aurora\120895\_1\TPH\11\Civil\Shots\Details\_ER002.dgn  
PLOT SCALE = NONE  
USER NAME = USER



REVISIONS	
NAME	DATE

ILLINOIS DEPARTMENT OF TRANSPORTATION  
CONSTRUCTION DETAILS

SCALE: VERT.  
HORIZ. NONE  
DATE 1/7/09

DRAWN BY TC  
CHECKED BY TC