

GENERAL NOTES

1. THE LOCATIONS OF THE VARIOUS UNDERGROUND UTILITIES AS SHOWN ON THE PLANS ARE APPROXIMATE. THE CONTRACTOR SHALL USE SPECIAL CARE WHEN CONDUCTING CONSTRUCTION OPERATIONS NEAR THEM TO PREVENT DAMAGE.
2. BEFORE STARTING ANY EXCAVATION, THE CONTRACTOR SHALL CALL J.U.L.I.E. AND THE VILLAGE OF OAK PARK PUBLIC WORKS (708-358-5700) FOR FIELD LOCATIONS OF VARIOUS UTILITIES.
3. THE CONTRACTOR SHALL COORDINATE VARIOUS CONSTRUCTION ACTIVITIES WITH UTILITY COMPANIES.
4. WHERE SECTION OR SUBSECTION MONUMENTS ARE ENCOUNTERED, THE ENGINEER SHALL BE NOTIFIED BEFORE SUCH MONUMENTS ARE REMOVED. THE CONTRACTOR SHALL PROTECT AND CAREFULLY PRESERVE ALL PROPERTY MARKER MONUMENTS UNTIL THE OWNER, AN AUTHORIZED AGENT, OR LAND SURVEYOR HAS WITNESSED OR OTHERWISE REFERENCED THEIR LOCATION. THE CONTRACTOR WILL BE RESPONSIBLE FOR HAVING AN AUTHORIZED SURVEYOR REESTABLISH ANY SECTION OR SUB-SECTION MONUMENTS DISRUPTED BY THEIR OPERATIONS.
5. BARRICADES: ALL UNBALLASTED TYPE I AND TYPE II BARRICADES SHALL HAVE TWO (2) SANDBAGS ON THE BOTTOM RAIL. A TYPE III BARRICADE SHALL REQUIRE A MINIMUM OF FOUR (4) SANDBAGS.
6. THE CONTRACTOR SHALL TAKE ALL NECESSARY PRECAUTIONS FOR THE PROTECTION OF EXISTING PLANT MATERIAL FOR WHICH THE CONTRACT DOES NOT PROVIDE REMOVAL. THE PROTECTION OF EXISTING PLANT MATERIAL AND THE REPAIR OR REPLACEMENT OF EXISTING PLANT MATERIAL DAMAGED BY THE CONTRACTOR SHALL BE DONE IN ACCORDANCE WITH THE REQUIREMENTS OF SECTION 201 OF THE STANDARD SPECIFICATIONS. ANY DAMAGE TO EXISTING PLANT MATERIAL DUE TO THE CONTRACTOR'S OPERATIONS SHALL BE REPLACED IN KIND AT THEIR EXPENSE.
7. CONTRACTOR SHALL TAKE CARE TO PROTECT EXISTING LANDSCAPING AT LOCATIONS NOT SHOWN IN THE PLANS TO BE REMOVED AND AS DIRECTED BY THE ENGINEER. LANDSCAPING TO BE PROTECTED THAT IS DAMAGED BY THE CONTRACTOR'S OPERATIONS SHALL BE REPLACED IN KIND AT THEIR EXPENSE.
8. ANY REFERENCE TO STANDARDS THROUGHOUT THE PLANS OR SPECIAL PROVISIONS SHALL BE INTERPRETED TO BE THE LATEST STANDARDS OF THE ILLINOIS DEPARTMENT OF TRANSPORTATION AND THE VILLAGE OF OAK PARK.
9. THE CONTRACTOR SHALL BE REQUIRED TO MAINTAIN PEDESTRIAN AND VEHICULAR ACCESS AT ALL TIMES TO ALL PRIVATE AND COMMERCIAL PROPERTIES DURING THE CONSTRUCTION OF THIS PROJECT.
10. THE VILLAGE OF OAK PARK WATER DEPARTMENT (708-445-3340 EXT. 3375) SHALL BE RESPONSIBLE FOR TURNING THE WATER MAIN VALVES ON AND OFF. THE CONTRACTOR IS NOT ALLOWED TO TURN THE VILLAGE OF OAK PARK OWNED WATER MAIN VALVES ON AND OFF. THE CONTRACTOR SHALL CONTACT THE VILLAGE OF OAK PARK FOR A WATER METER IF NECESSARY.
11. THE CONTRACTOR SHALL PROTECT AND PRESERVE ALL PARKING METERS ALONG THE PROJECT CORRIDOR. IF THE PARKING METERS ARE FOUND TO INTERFERE WITH CONSTRUCTION ACTIVITY, THEY SHALL BE CAREFULLY REMOVED FROM THEIR METAL SUPPORT POST, STORED, AND IMMEDIATELY REINSTALLED WHEN THE HAZARD NO LONGER EXISTS, OR AS DIRECTED BY THE ENGINEER. THE CONTRACTOR SHALL BE CAREFUL NOT TO DAMAGE THE SUPPORT OR FOUNDATION WHEN REMOVING THE ADJACENT SIDEWALK. ANY DAMAGE TO OR LOSS OF ANY COMPONENT SHALL BE REPLACED OR REPAIRED AT NO EXTRA COST.

12. MODIFICATIONS TO PROPOSED HANDHOLES NECESSARY TO INTERCEPT EXISTING CONDUITS SHALL NOT BE MEASURED FOR PAYMENT BUT SHALL BE INCIDENTAL TO THE CONTRACT.

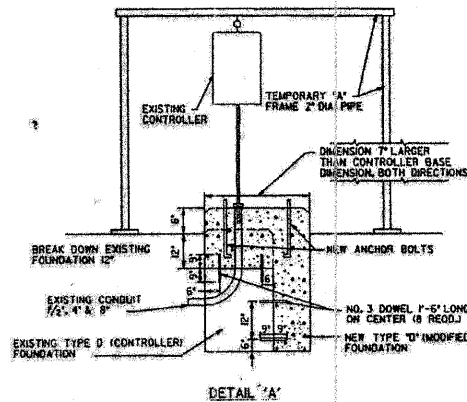
INCIDENTAL ITEMS

HIGHWAY STANDARDS

- 000001-05 STANDARD SYMBOLS, ABBREVIATIONS, AND PATTERNS (8 SHEETS)
- 424001-05 CURB RAMPS FOR SIDEWALKS (2 SHEETS)
- 701001-02 OFF-RD OPERATIONS, 2L, 2W, MORE THAN 15' (4.5m) AWAY
- 701006-03 OFF-RD OPERATIONS, 2L, 2W, 15' (4.5m) TO 24" (600 mm) FROM PAVEMENT EDGE
- 701011-02 OFF-RD MOVING OPERATIONS, 2L, 2W, DAY ONLY
- 701301-03 LANE CLOSURE, 2L, 2W, SHORT TIME OPERATIONS
- 701501-05 URBAN LANE CLOSURE, 2L, 2W, UNDIVIDED
- 701701-06 URBAN LANE CLOSURE, MULTILANE INTERSECTION
- 701801-04 LANE CLOSURE MULTILANE 1W OR 2W CROSSWALK OR SIDEWALK CLOSURE
- 701901-01 TRAFFIC CONTROL DEVICES (3 SHEETS)
- 814001-02 HANDHOLES
- 857001-01 STANDARD PHASE DESIGNATION DIAGRAMS AND PHASE SEQUENCES (2 SHEETS)
- 873001-02 TRAFFIC SIGNAL GROUNDING & BONDING
- 878001-07 CONCRETE FOUNDATION DETAILS (2 SHEETS)
- 886001-01 DETECTOR LOOP INSTALLATIONS
- 886006-01 TYPICAL LAYOUTS FOR DETECTION LOOPS

DISTRICT STANDARDS

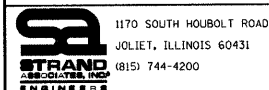
- BD-24 CURB OR CURB AND GUTTER REMOVAL AND REPLACEMENT
- TC-10 TRAFFIC CONTROL AND PROTECTION FOR SIDE ROADS, INTERSECTIONS, AND DRIVEWAYS
- TC-14 TRAFFIC CONTROL AND PROTECTION AT TURN BAYS (TO REMAIN OPEN TO TRAFFIC)
- TC-22 TEMPORARY INFORMATION SIGNING
- TS-03 HANDHOLE TO INTERCEPT EXISTING CONDUIT
- TS-05 DISTRICT ONE STANDARD TRAFFIC SIGNAL DESIGN DETAIL (4 SHEETS)



INDEX OF DRAWINGS

DRAWING NUMBER	DESCRIPTION
1	COVER SHEET
2	GENERAL NOTES, HIGHWAY STANDARDS, AND DISTRICT DETAILS
3	SUMMARY OF QUANTITIES
4-6	WASHINGTON BOULEVARD AND HOME AVENUE -EXISTING TRAFFIC SIGNAL PLAN -MODIFICATION PLAN -CABLE PLAN
7-9	WASHINGTON BOULEVARD AND OAK PARK AVENUE -EXISTING TRAFFIC SIGNAL PLAN -MODIFICATION PLAN -CABLE PLAN
10-13	WASHINGTON BOULEVARD AND EAST AVENUE -EXISTING TRAFFIC SIGNAL PLAN -TRAFFIC SIGNAL REMOVAL PLAN -MODIFICATION PLAN -CABLE PLAN
14-16	WASHINGTON BOULEVARD AND RIDGELAND AVENUE -EXISTING TRAFFIC SIGNAL PLAN -MODIFICATION PLAN -CABLE PLAN
17-20	WASHINGTON BOULEVARD AND LOMBARD AVENUE -EXISTING TRAFFIC SIGNAL PLAN -TRAFFIC SIGNAL REMOVAL PLAN -MODIFICATION PLAN -CABLE PLAN
21	WASHINGTON BOULEVARD INTERCONNECT PLAN - SHEET 1 OF 3
22	WASHINGTON BOULEVARD INTERCONNECT PLAN - SHEET 2 OF 3
23	WASHINGTON BOULEVARD INTERCONNECT PLAN - SHEET 3 OF 3
24	WASHINGTON BOULEVARD INTERCONNECT SCHEMATIC
25	EXISTING MADISON STREET INTERCONNECT SCHEMATIC
26-28	JACKSON BOULEVARD AND RIDGELAND AVENUE -EXISTING TRAFFIC SIGNAL PLAN -MODIFICATION PLAN -CABLE PLAN
29-32	JACKSON BOULEVARD AND HIGHLAND AVENUE -EXISTING TRAFFIC SIGNAL PLAN -TRAFFIC SIGNAL REMOVAL PLAN -MODIFICATION PLAN -CABLE PLAN
33	JACKSON BOULEVARD INTERCONNECT PLAN
34	JACKSON BOULEVARD INTERCONNECT SCHEMATIC
35-37	RIDGELAND AVENUE AND AUGUSTA STREET -EXISTING TRAFFIC SIGNAL PLAN -MODIFICATION PLAN -CABLE PLAN
38-40	RIDGELAND AVENUE AND DIVISION STREET -EXISTING TRAFFIC SIGNAL PLAN -MODIFICATION PLAN -CABLE PLAN
41-43	RIDGELAND AVENUE AND LENOX STREET -EXISTING TRAFFIC SIGNAL PLAN -MODIFICATION PLAN -CABLE PLAN
44	RIDGELAND AVENUE INTERCONNECT PLAN
45	RIDGELAND AVENUE INTERCONNECT SCHEMATIC
46	EXISTING RIDGELAND AVENUE INTERCONNECT SCHEMATIC
47-49	OAK PARK AVENUE AND HARVARD STREET -EXISTING TRAFFIC SIGNAL PLAN -MODIFICATION PLAN -CABLE PLAN
50-52	OAK PARK AVENUE AND GARFIELD STREET -EXISTING TRAFFIC SIGNAL PLAN -MODIFICATION PLAN -CABLE PLAN
53	OAK PARK AVENUE INTERCONNECT PLAN
54	OAK PARK AVENUE INTERCONNECT SCHEMATIC
55-62	DISTRICT DETAILS HIGHWAY STANDARDS

FILE NAME = s:\p\16720-6799\6784\000\mcr-on\Sheets\gannotes.dgn



USER NAME = edamm	DESIGNED -	REVISED -
PLOT SCALE = 20.0000' / IN.	DRAWN -	REVISED -
PLOT DATE = 5/26/2009	CHECKED -	REVISED -
	DATE -	REVISED -

**STATE OF ILLINOIS
DEPARTMENT OF TRANSPORTATION**

GENERAL NOTES, HIGHWAY STANDARDS, AND DISTRICT DETAILS

SCALE: AS SHOWN SHEET NO. OF SHEETS STA. TO STA.

F.A.U. RTE.	SECTION	COUNTY	TOTAL SHEETS	SHEET NO.
1412	07-00245-00-TL	COOK	64	2
FED. ROAD DIST. NO.			ILLINOIS FED. AID PROJECT	
			CONTRACT NO. 63112	