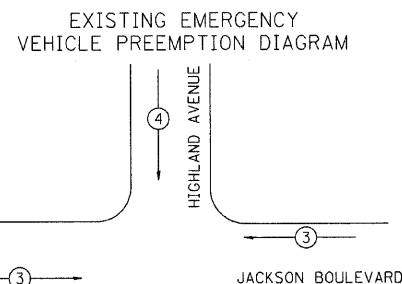
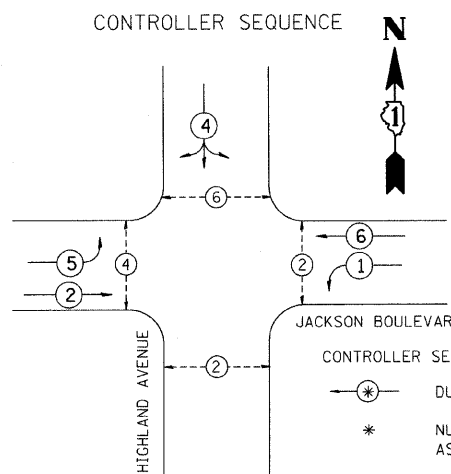


ITEM	UNIT	QUANTITY
MAINTENANCE OF EXISTING TRAFFIC SIGNAL INSTALLATION	EACH	1
MODIFY EXISTING CONTROLLER	EACH	1

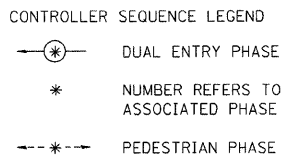


**CABLE PLAN LEGEND**

EXISTING	PROPOSED	
		8" (200mm) TRAFFIC SIGNAL SECTION
		12" (300mm) TRAFFIC SIGNAL SECTION
		12" (300mm) PEDESTRIAN SIGNAL SECTION (LETTERS)
		12" (300mm) PEDESTRIAN SIGNAL SECTION (SYMBOLS)
		CONTROLLER CABINET
		SERVICE INSTALLATION
		TELEPHONE INSTALLATION
		VEHICLE DETECTOR, INDUCTIVE LOOP
		MAGNETIC DETECTOR
		EMERGENCY VEHICLE LIGHT DETECTOR
		CONFIRMATION BEACON
		PUSHBUTTON DETECTOR
		DENOTES NUMBER OF CONDUCTORS. ALL CABLE NO. 14 EXCEPT AS INDICATED. ALL LOOP DETECTOR CABLE TO BE SHIELDED.
		GROUND CABLE IN CONDUIT NO. 6 SOLID COPPER (GREEN)
		FIBER OPTIC CABLE IN CONDUIT NO. 62.5/125 2-MMI2F SM12F
		SIGNAL FACE WITH BACKPLATE. "P" INDICATES PROGRAMMED HEAD.
		GROUND CABLE ROD AT HANDHOLE (H), DOUBLE HANDHOLE (H), OR CONTROLLER (C)
		GROUND ROD AT POST (P) OR MAST ARM POLE (MA)
		GROUND ROD AT ELECTRIC SERVICE INSTALLATION



**PHASE DESIGNATION DIAGRAM**



EMERGENCY VEHICLE PREEMPTORS

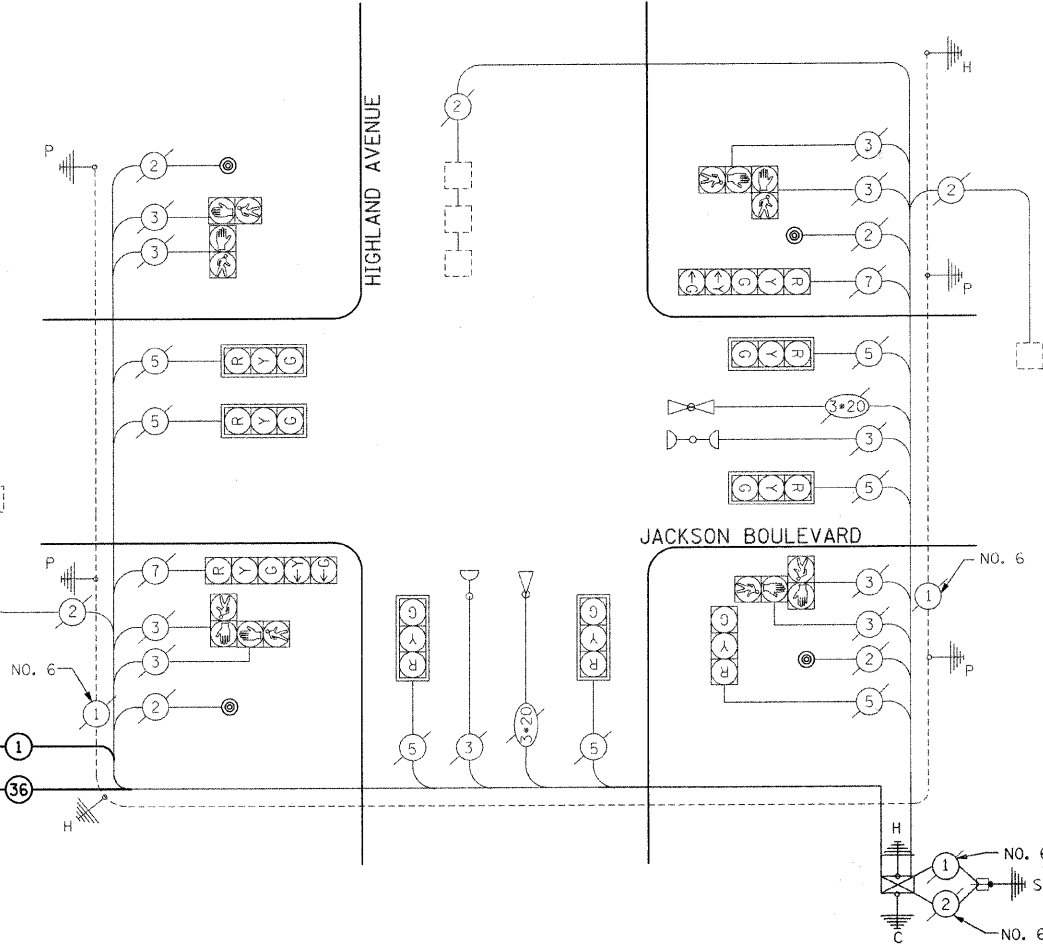
EMERGENCY VEHICLE PREEMPTOR	3	4
MOVEMENT		

INTERSECTION AND SAMPLING (SYSTEM) DETECTOR (TYP.)

TRACER CABLE ← 1

FIBER OPTIC INTERCONNECTION TO RIDGELAND AVENUE ← 36

ALL TRACER CABLE SHALL BE CONTINUOUS AND EXTEND INTO THE CONTROLLER CABINET (TYP.)



I.D.O.T. TRAFFIC SIGNAL INSTALLATION ELECTRICAL SERVICE REQUIREMENTS

TYPE	NO. LAMPS	WATTAGE		%OPERATION	TOTAL WATTAGE
		INCAND.	LED		
SIGNAL (RED)	9	135		0.50	608
(YELLOW)	9	135		0.25	304
(GREEN)	9	135		0.25	304
ARROW	0	135		0.10	0
PED. SIGNAL	8	90		1.00	720
CONTROLLER	1	300		1.00	300
ILLUM. SIGN				0.05	0
FLASHER	-			0.50	0

ENERGY COSTS TO:

TYPE A - POST	FT. (m)	CABLE SLACK	FT. (m)	VERTICAL	FT. (m)
4 (1.2)		HANDHOLE	6.5 (2.0)	ALL FOUNDATIONS	3.5 (1.0)
D - CONTROLLER	4 (1.2)	DOUBLE HANDHOLE	13 (4.0)	MAST ARM (L) POLE	20'+L-2'=(6m+L-0.6m)=
E - M. ARM POLE		SIGNAL POST	2 (1.0)		
30" (750 mm)	10 (3.0)	CONTROLLER CAB.	1 (0.5)	BRACKET MOUNTED	13 (4.0)
36" (900 mm)	15 (4.6)	FIBER OPTIC	13 (4.0)	PED. PUSHBUTTON	4 (1.2)
		ELECTRIC SERVICE	1 (0.5)	ELECTRICAL SERVICE	13.5 (4.1)
		GROUND CABLE	1 (0.5)	SERVICE TO GROUND	13.5 (4.1)
				POST MOUNTED	6 (1.8)

ENERGY SUPPLY CONTACT: \_\_\_\_\_  
PHONE: \_\_\_\_\_  
COMPANY: Commonwealth Edison

1170 SOUTH HOBOLT ROAD JULIET, ILLINOIS 60431 (815) 744-4200	USER NAME = adamn DESIGNED - DRAWN - CHECKED - DATE -	REVISOR - REVISION - REVISION - REVISION -
--	---	---

**STATE OF ILLINOIS  
DEPARTMENT OF TRANSPORTATION**

**CABLE PLAN  
JACKSON BOULEVARD & HIGHLAND AVENUE**

SCALE: AS SHOWN SHEET NO. OF SHEETS STA. TO STA.

F.A.U. RTE.	SECTION	COUNTY	TOTAL SHEETS	SHEET NO.
1412	07-00245-00-TL	COOK	64	31
FED. ROAD DIST. NO. ILLINOIS FED. AID PROJECT			CONTRACT NO. 63112	

FILE NAME = s:\j\1\6780-6799\6784\09\mcrca\cable\_plans\jackson-highland.dgn