

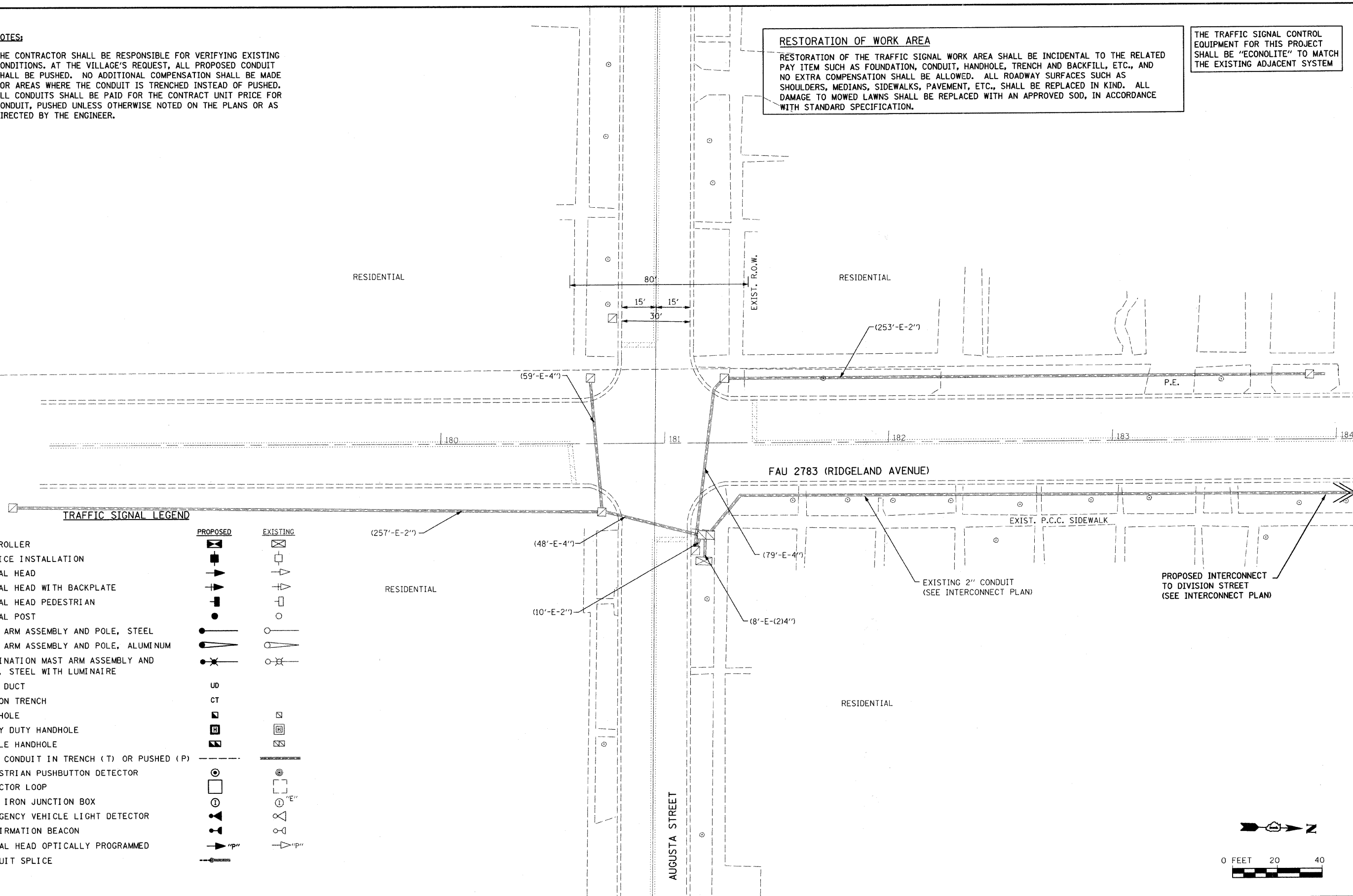
**NOTES:**

1. THE CONTRACTOR SHALL BE RESPONSIBLE FOR VERIFYING EXISTING CONDITIONS. AT THE VILLAGE'S REQUEST, ALL PROPOSED CONDUIT SHALL BE PUSHED. NO ADDITIONAL COMPENSATION SHALL BE MADE FOR AREAS WHERE THE CONDUIT IS TRENCHED INSTEAD OF PUSHED. ALL CONDUITS SHALL BE PAID FOR THE CONTRACT UNIT PRICE FOR CONDUIT, PUSHED UNLESS OTHERWISE NOTED ON THE PLANS OR AS DIRECTED BY THE ENGINEER.

**RESTORATION OF WORK AREA**

RESTORATION OF THE TRAFFIC SIGNAL WORK AREA SHALL BE INCIDENTAL TO THE RELATED PAY ITEM SUCH AS FOUNDATION, CONDUIT, HANDHOLE, TRENCH AND BACKFILL, ETC., AND NO EXTRA COMPENSATION SHALL BE ALLOWED. ALL ROADWAY SURFACES SUCH AS SHOULDERS, MEDIANS, SIDEWALKS, PAVEMENT, ETC., SHALL BE REPLACED IN KIND. ALL DAMAGE TO MOWED LAWNS SHALL BE REPLACED WITH AN APPROVED SOD, IN ACCORDANCE WITH STANDARD SPECIFICATION.

THE TRAFFIC SIGNAL CONTROL EQUIPMENT FOR THIS PROJECT SHALL BE "ECONOLITE" TO MATCH THE EXISTING ADJACENT SYSTEM



**TRAFFIC SIGNAL LEGEND**

	PROPOSED	EXISTING
CONTROLLER		
SERVICE INSTALLATION		
SIGNAL HEAD		
SIGNAL HEAD WITH BACKPLATE		
SIGNAL HEAD PEDESTRIAN		
SIGNAL POST		
MAST ARM ASSEMBLY AND POLE, STEEL		
MAST ARM ASSEMBLY AND POLE, ALUMINUM		
COMBINATION MAST ARM ASSEMBLY AND POLE, STEEL WITH LUMINAIRE		
UNIT DUCT	UB	
COMMON TRENCH	CT	
HANDHOLE		
HEAVY DUTY HANDHOLE		
DOUBLE HANDHOLE		
G. S. CONDUIT IN TRENCH (T) OR PUSHED (P)		
PEDESTRIAN PUSHBUTTON DETECTOR		
DETECTOR LOOP		
CAST IRON JUNCTION BOX		
EMERGENCY VEHICLE LIGHT DETECTOR		
CONFIRMATION BEACON		
SIGNAL HEAD OPTICALLY PROGRAMMED		
CONDUIT SPLICE		

PROPOSED INTERCONNECT TO DIVISION STREET (SEE INTERCONNECT PLAN)

EXISTING 2" CONDUIT (SEE INTERCONNECT PLAN)



FILE NAME = n:\pl\6700-6799\6784\08\Intersect\Sheets\augusta-ridgeland.dgn

**STRAND ENGINEERS**  
1170 SOUTH HOUBOLT ROAD  
JOLIET, ILLINOIS 60431  
(815) 744-4200

USER NAME = adamm	DESIGNED -	REVISED -
PLOT SCALE = 20,0000' / IN.	DRAWN -	REVISED -
PLOT DATE = 5/26/2009	CHECKED -	REVISED -
	DATE -	REVISED -

**STATE OF ILLINOIS  
DEPARTMENT OF TRANSPORTATION**

TRAFFIC SIGNAL MODIFICATION PLAN RIDGELAND AVENUE & AUGUSTA STREET			
SCALE: AS SHOWN	SHEET NO.	OF SHEETS	STA. TO STA.

F.A.U. RTE.	SECTION	COUNTY	TOTAL SHEETS	SHEET NO.
1412	07-00245-00-TL	COOK	64	35
CONTRACT NO. 63112				
FED. ROAD DIST. NO. [ILLINOIS] FED. AID PROJECT				