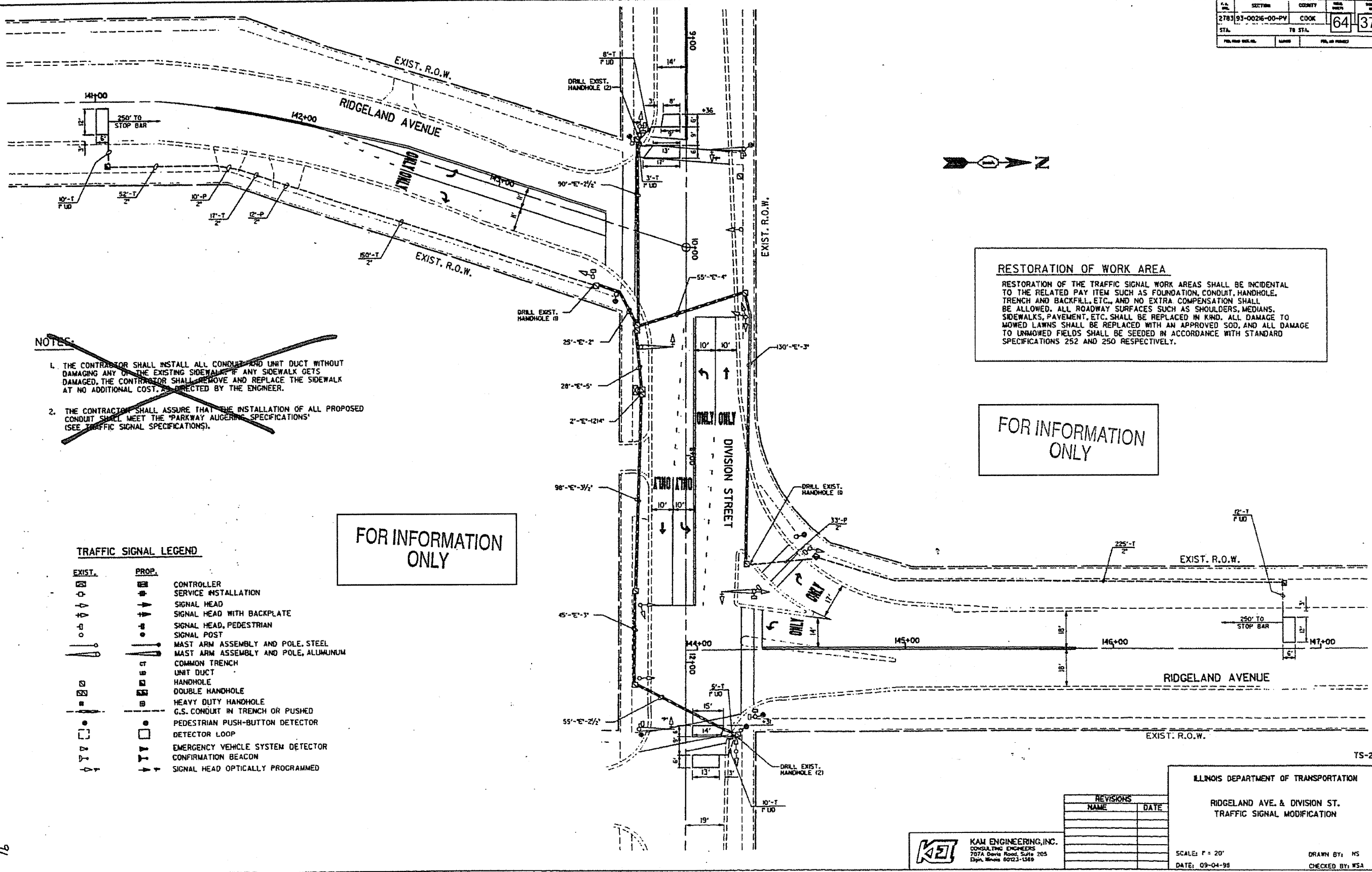


STATE	SECTION	COUNTY	MAP SHEET	SHEET NO.
2783	93-0026-00-PV	COOK	64	37
STA.	TO STA.		FILE NO. (PROJECT)	



- NOTES:**
1. THE CONTRACTOR SHALL INSTALL ALL CONDUIT AND UNIT DUCT WITHOUT DAMAGING ANY OF THE EXISTING SIDEWALKS. IF ANY SIDEWALK GETS DAMAGED, THE CONTRACTOR SHALL REMOVE AND REPLACE THE SIDEWALK AT NO ADDITIONAL COST, AS DIRECTED BY THE ENGINEER.
  2. THE CONTRACTOR SHALL ASSURE THAT THE INSTALLATION OF ALL PROPOSED CONDUIT SHALL MEET THE 'PARKWAY AUGERING SPECIFICATIONS' (SEE TRAFFIC SIGNAL SPECIFICATIONS).

**RESTORATION OF WORK AREA**  
 RESTORATION OF THE TRAFFIC SIGNAL WORK AREAS SHALL BE INCIDENTAL TO THE RELATED PAY ITEM SUCH AS FOUNDATION, CONDUIT, HANDHOLE, TRENCH AND BACKFILL, ETC., AND NO EXTRA COMPENSATION SHALL BE ALLOWED. ALL ROADWAY SURFACES SUCH AS SHOULDERS, MEDIANS, SIDEWALKS, PAVEMENT, ETC., SHALL BE REPLACED IN KIND. ALL DAMAGE TO MOWED LAWNS SHALL BE REPLACED WITH AN APPROVED SOD, AND ALL DAMAGE TO UNMOWED FIELDS SHALL BE SEEDING IN ACCORDANCE WITH STANDARD SPECIFICATIONS 252 AND 250 RESPECTIVELY.

FOR INFORMATION ONLY

FOR INFORMATION ONLY

**TRAFFIC SIGNAL LEGEND**

EXIST.	PROP.	
		CONTROLLER
		SERVICE INSTALLATION
		SIGNAL HEAD
		SIGNAL HEAD WITH BACKPLATE
		SIGNAL HEAD, PEDESTRIAN
		SIGNAL POST
		MAST ARM ASSEMBLY AND POLE, STEEL
		MAST ARM ASSEMBLY AND POLE, ALUMINUM
		COMMON TRENCH
		UNIT DUCT
		HANDHOLE
		DOUBLE HANDHOLE
		HEAVY DUTY HANDHOLE
		G.S. CONDUIT IN TRENCH OR PUSHED
		PEDESTRIAN PUSH-BUTTON DETECTOR
		DETECTOR LOOP
		EMERGENCY VEHICLE SYSTEM DETECTOR
		CONFIRMATION BEACON
		SIGNAL HEAD OPTICALLY PROGRAMMED

REVISIONS	
NAME	DATE

ILLINOIS DEPARTMENT OF TRANSPORTATION  
 RIDGELAND AVE. & DIVISION ST.  
 TRAFFIC SIGNAL MODIFICATION  
 SCALE: F = 20'  
 DATE: 09-04-98  
 DRAWN BY: MS  
 CHECKED BY: WSA

**K&E** KAM ENGINEERING, INC.  
 CONSULTING ENGINEERS  
 707A Davis Road, Suite 205  
 Elgin, Illinois 60120-1589

F:\DCN\JOB91-2\DIVISISIG.DGN  
 16

63112