

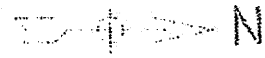
CONSTRUCTION NOTES:

① REMOVE EXISTING 14' TRAFFIC SIGNAL POST. INSTALL NEW 18' TRAFFIC SIGNAL POST ON EXISTING FOUNDATION AND RELOCATE EXISTING TRAFFIC SIGNAL HEAD, 1-FACE, 3-SECTION TO NEW POST. REUSE EXISTING CABLES. INSTALL NEW LIGHT DETECTOR ON NEW POST AND INSTALL NO. 20 3/C AND NO. 14 3/C CABLES.

△ REMOVE EXISTING TRAFFIC SIGNAL EQUIPMENT, EACH 1

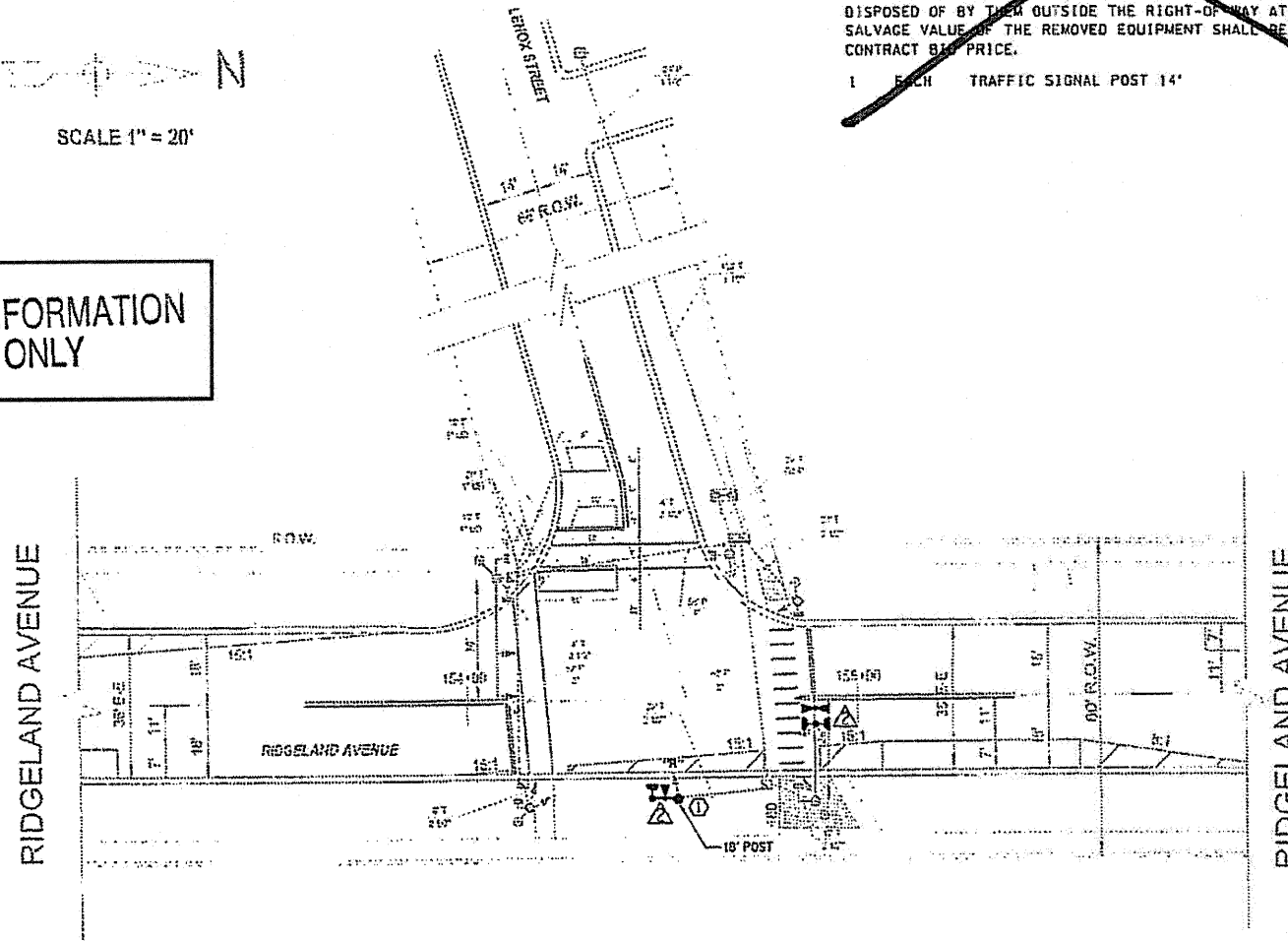
THE FOLLOWING ITEMS SHALL BE REMOVED BY THE CONTRACTOR AND SHALL BE DISPOSED OF BY THEM OUTSIDE THE RIGHT-OF-WAY AT THEIR EXPENSE. THE SALVAGE VALUE OF THE REMOVED EQUIPMENT SHALL BE REFLECTED IN THE CONTRACT BID PRICE.

1 EACH TRAFFIC SIGNAL POST 14'



SCALE 1" = 20'

FOR INFORMATION ONLY



TRAFFIC SIGNAL INSTALLATION PLAN

SCALE 1" = 20'

FOR INFORMATION ONLY

△ RESTORATION OF WORK AREA. RESTORATION OF THE TRAFFIC SIGNAL WORK AREA SHALL BE INCIDENTAL TO THE RELATED PAY ITEM SUCH AS FOUNDATION, CONDUIT, HANDHOLE, TRENCH AND BACKFILL, ETC., AND NO EXTRA COMPENSATION SHALL BE ALLOWED. ALL ROADWAY SURFACES SUCH AS SHOULDERS, MEDIANS, SIDEWALKS, PAVEMENT, ETC. SHALL BE REPLACED IN KIND. ALL DAMAGE TO MOWED LAWNS SHALL BE REPLACED WITH AN APPROVED SOD, AND ALL DAMAGE TO UNMOWED FIELDS SHALL BE SEEDED IN ACCORDANCE WITH STANDARD SPECIFICATIONS 252 AND 250 RESPECTIVELY.

TRAFFIC SIGNAL LEGEND

	PROPOSED	EXISTING
CONTROLLER		
SERVICE INSTALLATION		
SIGNAL HEAD		
SIGNAL HEAD WITH BLACKPLATE		
SIGNAL HEAD, PEDESTRIAN		
SIGNAL POST		
MAST ARM ASSEMBLY AND POLE, STEEL		
MAST ARM ASSEMBLY AND POLE, ALUMINUM		
COMMON TRENCH		
UNIT DUCT		
HANDHOLE		
HEAVY DUTY HANDHOLE		
DOUBLE HANDHOLE		
G.S. CONDUIT IN TRENCH CRUSHED		
PEDESTRIAN PUSHBUTTON DETECTOR		
DETECTOR LOOP		
EMERGENCY VEHICLE SYSTEM DETECTOR		
CONFIRMATION BEGGON		
SIGNAL HEAD OPTICALLY PROGRAMMED		
△ RELOCATED		

△ INSTALLATION OF EMERGENCY VEHICLE PREEMPTION
6-03-02

OAK PARK-SHEET 289 OF 365
CHRISTOPHER B. BURKE ENGINEERING LTD.
2575 West Higgins Road, Suite 200
Aurora, Illinois 60018
(847) 633-6200

KEEP THIS PLAN SHEET WITH THE REDUCED SET OF DRAWINGS.

DATE	BY	REVISIONS
03-20-05	ME	
6-03-02	CBEL	

ENGINEERING DIVISION

TRAFFIC SIGNAL INSTALLATION PLAN
RIDGELAND AVENUE AND LENOX STREET

EXHIBIT