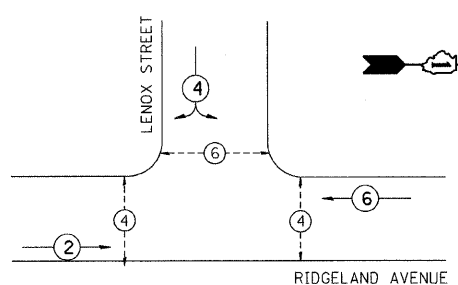


ITEM	UNIT	QUANTITY
HANDHOLE	EACH	2
MAINTENANCE OF EXISTING TRAFFIC SIGNAL INSTALLATION	EACH	1
ELECTRIC CABLE IN CONDUIT, LEAD IN, NO. 14, 1 PAIR	FOOT	735
DETECTOR LOOP, TYPE 1	FOOT	67
INDUCTIVE LOOP DETECTOR	EACH	2
MODIFY EXISTING CONTROLLER	EACH	1
CONDUIT PUSHED, 2" DIAMETER, GALVANIZED STEEL	FOOT	531
DRILL EXISTING HANDHOLE	EACH	2

**CONTROLLER SEQUENCE**

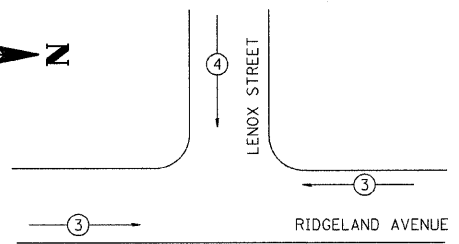


**CONTROLLER SEQUENCE LEGEND**

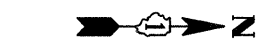
- ⊙ (with number) DUAL ENTRY PHASE
- \* NUMBER REFERS TO ASSOCIATED PHASE
- ⊙ (with number) PEDESTRIAN PHASE

EMERGENCY VEHICLE PREEMPTORS		
EMERGENCY VEHICLE PREEMPTOR	3	4
MOVEMENT	← →	↓

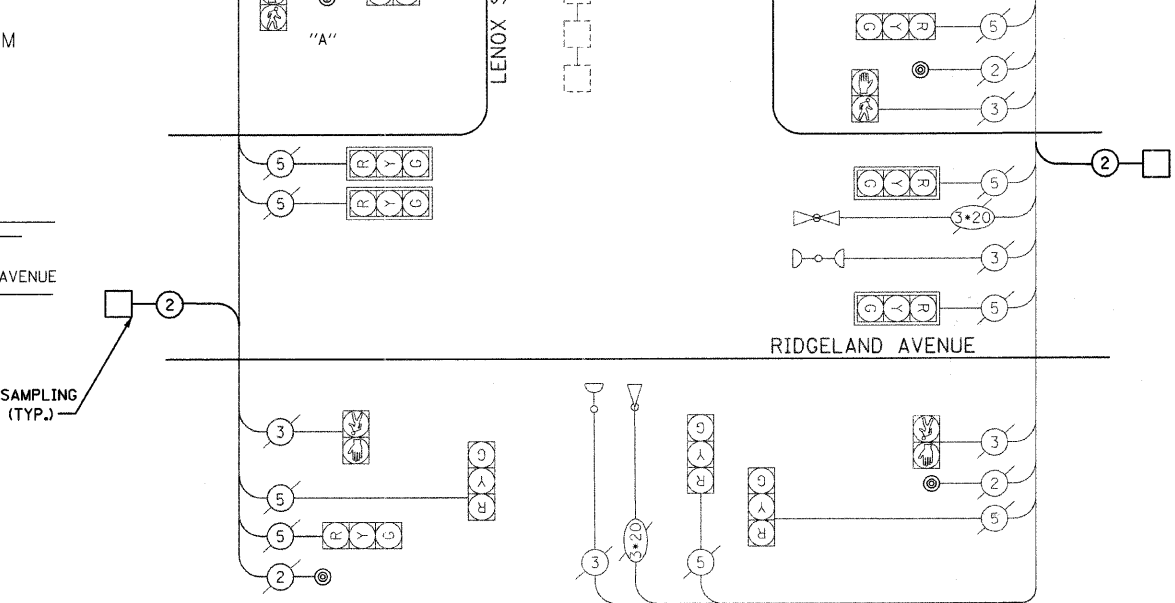
**EXISTING EMERGENCY VEHICLE PREEMPTION DIAGRAM**



(DRAWING NOT TO SCALE)



FIBER OPTIC INTERCONNECTION TO DIVISION STREET  
TRACER CABLE



**CABLE PLAN LEGEND**

- | EXISTING | PROPOSED |   |
|----------|----------|---|
|          |          | 8" (200mm) TRAFFIC SIGNAL SECTION   |
|          |          | 12" (300mm) TRAFFIC SIGNAL SECTION  |
|          |          | 12" (300mm) PEDESTRIAN SIGNAL SECTION (LETTERS)   |
|          |          | 12" (300mm) PEDESTRIAN SIGNAL SECTION (SYMBOLS)   |
|          |          | CONTROLLER CABINET  |
|          |          | SERVICE INSTALLATION  |
|          |          | TELEPHONE INSTALLATION  |
|          |          | VEHICLE DETECTOR, INDUCTIVE LOOP  |
|          |          | MAGNETIC DETECTOR   |
|          |          | EMERGENCY VEHICLE LIGHT DETECTOR  |
|          |          | CONFIRMATION BEACON   |
|          |          | PUSHBUTTON DETECTOR   |
|          |          | DENOTES NUMBER OF CONDUCTORS. ALL CABLE NO. 14 EXCEPT AS INDICATED. ALL LOOP DETECTOR CABLE TO BE SHIELDED. |
|          |          | GROUND CABLE IN CONDUIT NO. 6 SOLID COPPER (GREEN)  |
|          |          | FIBER OPTIC CABLE IN CONDUIT NO. 62.5/125 2-MM12F SM12F   |
|          |          | SIGNAL FACE WITH BACKPLATE. "P" INDICATES PROGRAMMED HEAD.  |
|          |          | GROUND CABLE ROD AT HANDHOLE (H), DOUBLE HANDHOLE (H), OR CONTROLLER (C)                                    |
|          |          | GROUND ROD AT POST (P) OR MAST ARM POLE (MA)  |
|          |          | GROUND ROD AT ELECTRIC SERVICE INSTALLATION   |

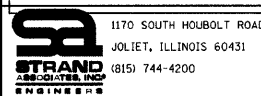
PUSH-BUTTON NOTES:  
PUSH-BUTTON "A" SHALL PLACE A CALL IN PHASES 4 AND 6.

I.D.O.T. TRAFFIC SIGNAL INSTALLATION ELECTRICAL SERVICE REQUIREMENTS					TOTAL WATTAGE
TYPE	NO. LAMPS	WATTAGE		%OPERATION	
		INCAND.	LED		
SIGNAL (RED)	9	17		0.50	77
(YELLOW)	9		25	0.25	56
(GREEN)	9		15	0.25	34
ARROW	0		12	0.10	0
PED. SIGNAL	6		25	1.00	150
CONTROLLER	1		100	1.00	100
ILLUM. SIGN				0.05	0
FLASHER	2			0.50	0
ENERGY COSTS TO:					TOTAL = 417

VILLAGE OF OAK PARK

ENERGY SUPPLY CONTACT: \_\_\_\_\_  
PHONE: \_\_\_\_\_  
COMPANY: Commonwealth Edison

FOUNDATION (DEPTH)	FT. (m)	CABLE SLACK	FT. (m)	VERTICAL	FT. (m)
TYPE A - POST	4 (1.2)	HANDHOLE	6.5 (2.0)	ALL FOUNDATIONS	3.5 (1.0)
D - CONTROLLER	4 (1.2)	DOUBLE HANDHOLE	13 (4.0)	MAST ARM (L) POLE	20'±L-2'
E - M. ARM POLE		SIGNAL POST	2 (1.0)	BRACKET MOUNTED	(6m±L-0.6m)±
30" (750 mm)	10 (3.0)	CONTROLLER CAB.	1 (0.5)	PED. PUSHBUTTON	4 (1.2)
36" (900 mm)	15 (4.6)	FIBER OPTIC	13 (4.0)	ELECTRICAL SERVICE	13.5 (4.1)
		ELECTRIC SERVICE	1 (0.5)	SERVICE TO GROUND	13.5 (4.1)
		GROUND CABLE	1 (0.5)	POST MOUNTED	6 (1.8)



USER NAME = adamm	DESIGNED -	REVISED -
	DRAWN -	REVISED -
	CHECKED -	REVISED -
	DATE -	REVISED -

**STATE OF ILLINOIS DEPARTMENT OF TRANSPORTATION**

**CABLE PLAN**  
**RIDGELAND AVENUE & LENOX STREET**

SCALE: AS SHOWN SHEET NO. OF SHEETS STA. TO STA.

F.A.U. RTE.	SECTION	COUNTY	TOTAL SHEETS	SHEET NO.
1412	07-00245-00-TL	COOK	64	44
CONTRACT NO. 63112				
FED. ROAD DIST. NO. ILLINOIS FED. AID PROJECT				