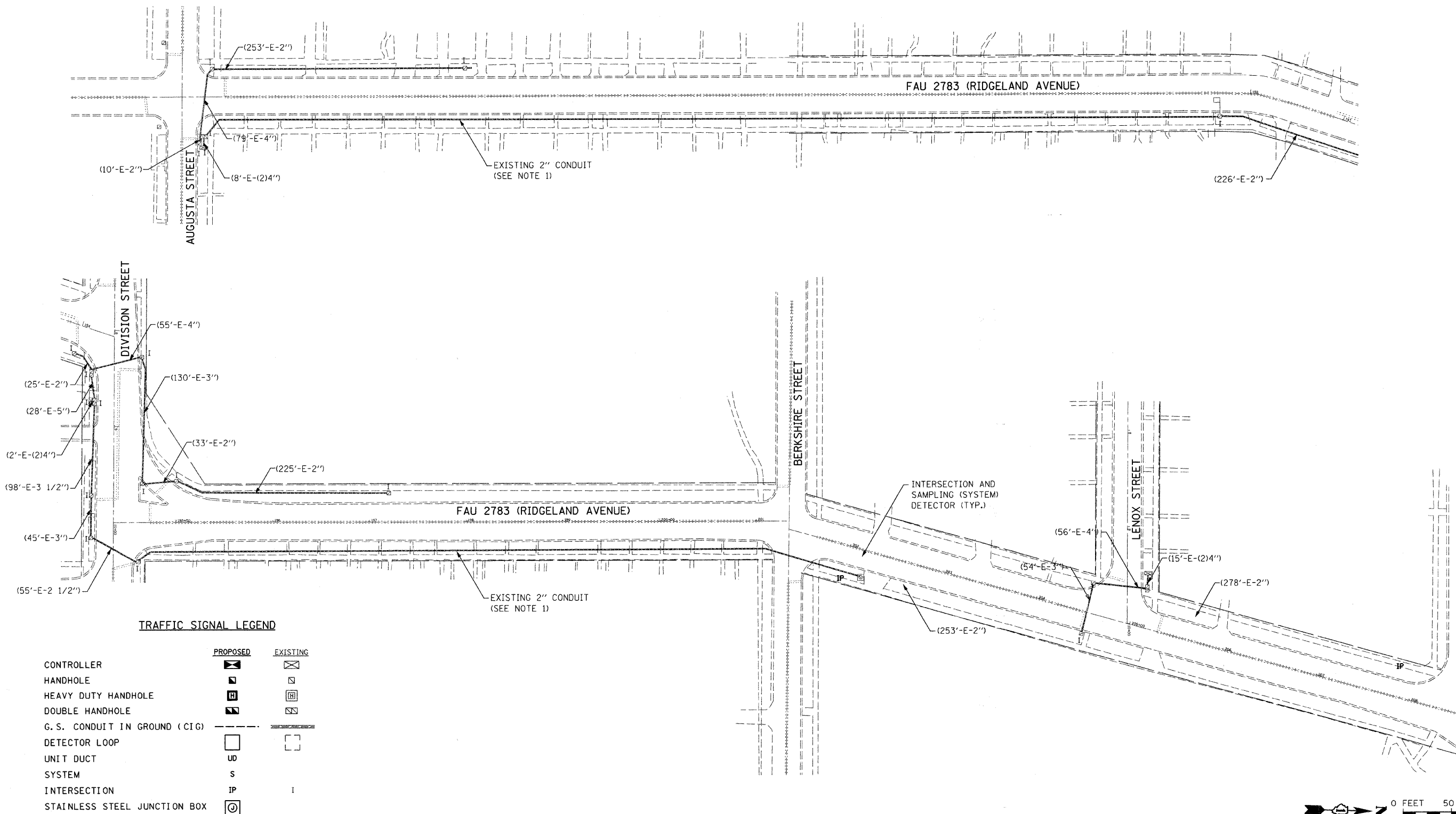


RESTORATION OF WORK AREA

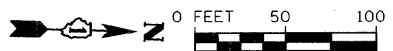
RESTORATION OF THE TRAFFIC SIGNAL WORK AREA SHALL BE INCIDENTAL TO THE RELATED PAY ITEM SUCH AS CONTROLLER, CONDUIT, HANDHOLE, TRENCH AND BACKFILL, ETC., AND NO EXTRA COMPENSATION SHALL BE ALLOWED. ALL ROADWAY SURFACES SUCH AS SHOULDERS, MEDIANS, SIDEWALKS, BRICK PAVEMENT, PAVEMENT, ETC., SHALL BE REPLACED IN KIND. ALL DAMAGE TO MOWED LAWNS SHALL BE REPLACED WITH AN APPROVED SOD, IN ACCORDANCE WITH STANDARD SPECIFICATION.

1. THE CONTRACTOR SHALL PULL THE PROPOSED FIBER OPTIC CABLE AND TRACER CABLE FROM AUGUSTA STREET TO BERKSHIRE STREET THROUGH THE EXISTING CONDUIT ON THE EAST SIDE OF RIDGELAND AVENUE. IF THE CONDUIT IS DAMAGED PRIOR TO THE START OF CONSTRUCTION ACTIVITY, THE CONTRACTOR SHALL PUSH NEW 2" DIAMETER GALVANIZED STEEL CONDUIT ADJACENT TO THE EXISTING CONDUIT OR AT A LOCATION DETERMINED BY THE ENGINEER. THE PROPOSED FIBER OPTIC CABLE AND TRACER CABLE SHALL THEN BE PULLED THROUGH THE NEW CONDUIT.



TRAFFIC SIGNAL LEGEND

	PROPOSED	EXISTING
CONTROLLER		
HANDHOLE		
HEAVY DUTY HANDHOLE		
DOUBLE HANDHOLE		
G. S. CONDUIT IN GROUND (CIG)		
DETECTOR LOOP		
UNIT DUCT	UD	
SYSTEM	S	
INTERSECTION	IP	I
STAINLESS STEEL JUNCTION BOX		



FILE NAME = an:\p1\6780-6789\678A\05\micro\interconnect_sheets\ridgeland-1.dgn



USER NAME = adam	DESIGNED -	REVISED -
PLOT SCALE = 50.0000' / IN.	DRAWN -	REVISED -
PLOT DATE = 5/26/2009	CHECKED -	REVISED -
	DATE -	REVISED -

**STATE OF ILLINOIS
DEPARTMENT OF TRANSPORTATION**

RIDGELAND AVENUE INTERCONNECT PLAN

SCALE: AS SHOWN SHEET NO. OF SHEETS STA. TO STA.

F.A. RTE. 1412	SECTION 07-00245-00-TL	COUNTY COOK	TOTAL SHEETS 64	SHEET NO. 45
FED. ROAD DIST. NO. ILLINOIS FED. AID PROJECT				
CONTRACT NO. 63112				