

F.A. RTE.	SECTION	COUNTY	TOTAL SHEETS	SHEET NO.
1300	09-00172-00-RS	COOK	II	1
		ILLINOIS	CONTRACT NO. 63190	

STATE OF ILLINOIS
DEPARTMENT OF TRANSPORTATION
DIVISION OF HIGHWAYS
PLANS FOR PROPOSED
FEDERAL AID HIGHWAY

FAU ROUTE 1300 (CENTRAL ROAD)
HUBER LANE TO HARLEM AVENUE
RESURFACING
SECTION NO: 09-00172-00-RS
PROJECT: ARA-903(326)
VILLAGE OF GLENVIEW
COOK COUNTY
C-91-635-09



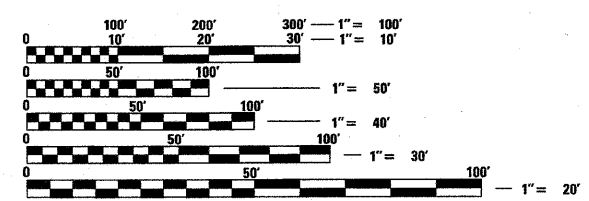
SHEET INDEX

1. TITLE SHEET
2. GENERAL NOTES, HIGHWAY STANDARDS AND SUMMARY OF QUANTITIES
3. EXISTING AND PROPOSED TYPICAL SECTIONS
4. IMPROVEMENT PLAN STA. 1+00 - 16+00
5. IMPROVEMENT PLAN STA. 16+00 - 31+00
6. IMPROVEMENT PLAN STA. 31+00 - 46+00
7. IMPROVEMENT PLAN STA. 46+00 - 61+00
8. IMPROVEMENT PLAN STA. 61+00 - 76+00
9. DISTRICT 1 - DETECTOR LOOP INSTALLATION DETAILS FOR ROADWAY RESURFACING
10. CONSTRUCTION DETAILS
11. CONSTRUCTION DETAILS

TRAFFIC DATA
ADT:
CENTRAL ROAD - 12,200

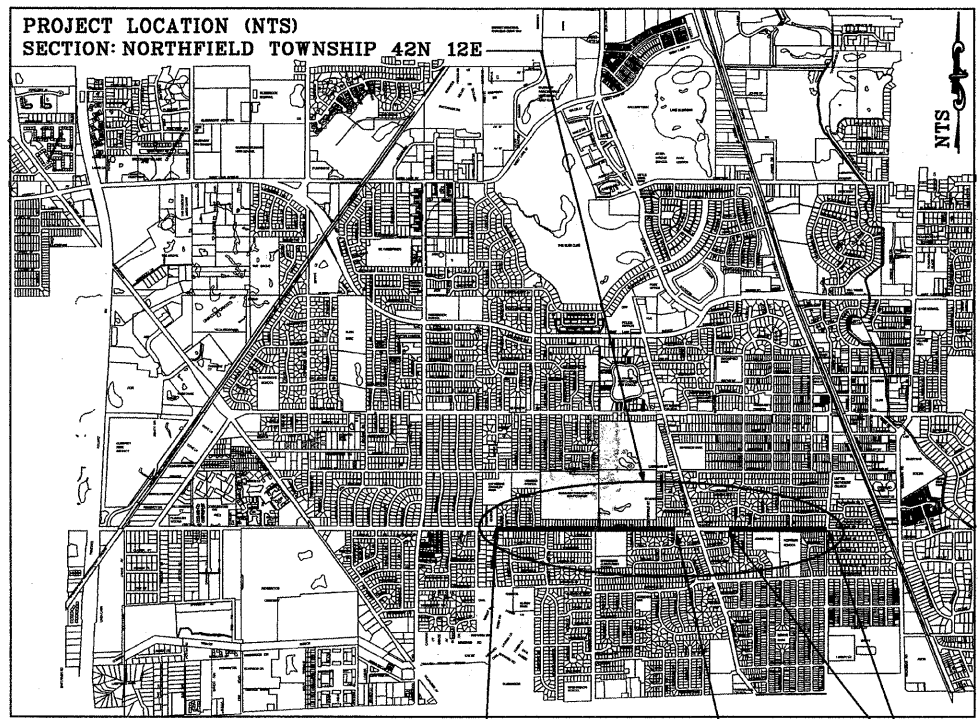
POSTED SPEED
35 MPH

FUNCTIONAL CLASSIFICATION - COLLECTOR



FULL SIZE PLANS HAVE BEEN PREPARED USING STANDARD ENGINEERING SCALES. REDUCED SIZED PLANS WILL NOT CONFORM TO STANDARD SCALES. IN MAKING MEASUREMENTS ON REDUCED PLANS, THE ABOVE SCALES MAY BE USED.

J.U.L.I.E.
JOINT UTILITY LOCATION
INFORMATION FOR EXCAVATION
1-800-892-0123
OR 811



PROJECT NO: ARA-903(326)
FAU ROUTE 1300 CENTRAL RD.
BEGIN RESURFACING STA. 2+98.13

PAVEMENT OMISSION
STA. 40+08.24 TO STA. 54+40.87

END RESURFACING
IMPROVEMENTS
STA. 76+57.64

STATE OF ILLINOIS
DEPARTMENT OF TRANSPORTATION
DIVISION OF HIGHWAYS

APPROVED *May 22 2009*
[Signature]
VILLAGE OF GLENVIEW - VILLAGE ENGINEER

APPROVED *May 29 2009*
[Signature]
DISTRICT ONE ENGINEER OF LOCAL ROADS AND STREETS

RELEASED FOR BID *MAY 29, 2009*
BASED ON LIMITED REVIEW

[Signature]
DEPUTY DIRECTOR OF HIGHWAYS, REGION ONE ENGINEER

CONTRACT NO. 63190

DISCLAIMER

POSTL - YORE AND ASSOCIATES, INC. SHALL NOT BE LIABLE OR RESPONSIBLE FOR THE ACCURACY OF ANY AND ALL DATA AND QUANTITIES PROVIDED IN THIS PLAN SET. NO FIELD SURVEY WAS COMPLETED FOR THIS PROJECT. ALL EXISTING AND PROPOSED DATA IS BASED ON G.I.S. DATA AND AERIAL PHOTOGRAPHY PROVIDED BY THE VILLAGE OF GLENVIEW. ALL EXISTING AND PROPOSED DATA SHALL BE FIELD VERIFIED BY ANY PERSON THAT INTENDS ON USING THIS PLAN SET FOR ANY REFERENCE OR CONSTRUCTION ACTIVITIES.

GROSS LENGTH = 7360 FT. = 1.39 MILES
OMISSION LENGTH = 1433 FT. = 0.27 MILE
NET LENGTH = 5927 FT. = 1.2 MILE

**PRINTED BY THE AUTHORITY
OF THE STATE OF ILLINOIS**

ASSOCIATE FIELD ENGINEER: KEVIN STALLWORTH (847) 705-4169