

| F.A. RTE.                   | SECTION        | COUNTY | TOTAL SHEETS | SHEET NO. |
|-----------------------------|----------------|--------|--------------|-----------|
|                             | 08-00024-00-SW | WILL   | 37           | 1         |
| ILLINOIS CONTRACT NO. 63200 |                |        |              |           |

**INDEX OF SHEETS**

**SHEET NO. DESCRIPTION**

- 1 TITLE SHEET
- 2 GENERAL NOTES AND IDOT STANDARDS
- 3 SUMMARY OF QUANTITIES
- 4 EARTHWORK TABLE
- 5 TYPICAL SECTION
- 6 ALIGNMENT, TIES AND BENCHMARKS - WYNSTONE DRIVE (CALLAWAY DRIVE TO SEIL ROAD)
- 7 ALIGNMENT, TIES AND BENCHMARKS - WYNSTONE DRIVE (AUBURN LAKES DRIVE TO HUNTER DRIVE)
- 8 ALIGNMENT, TIES AND BENCHMARKS - WYNSTONE DRIVE (PARKSIDE DRIVE TO JEFFERSON STREET)
- 9 ALIGNMENT, TIES AND BENCHMARKS - TROY SHOREWOOD ELEMENTARY SCHOOL (DANTE COURT AND OAK COURT)
- 10 REMOVAL PLAN AND PROPOSED IMPROVEMENTS - WYNSTONE DRIVE (CALLAWAY DRIVE TO SEIL ROAD)
- 11 REMOVAL PLAN AND PROPOSED IMPROVEMENTS - WYNSTONE DRIVE (AUBURN LAKES DRIVE TO HUNTER ROAD)
- 12 REMOVAL PLAN AND PROPOSED IMPROVEMENTS - WYNSTONE DRIVE (AUBURN LAKES DRIVE TO HUNTER ROAD)
- 13 REMOVAL PLAN AND PROPOSED IMPROVEMENTS - WYNSTONE DRIVE (PARKSIDE DRIVE TO JEFFERSON STREET)
- 14 REMOVAL PLAN AND PROPOSED IMPROVEMENTS - WYNSTONE DRIVE (PARKSIDE DRIVE TO JEFFERSON STREET)
- 15 PROPOSED IMPROVEMENTS - TROY SHOREWOOD ELEMENTARY SCHOOL (DANTE COURT AND OAK COURT)
- 16 PROPOSED IMPROVEMENTS - TROY SHOREWOOD ELEMENTARY SCHOOL (DANTE COURT AND OAK COURT)
- 17 - 18 CROSS SECTIONS- WYNSTONE DRIVE (CALLAWAY DRIVE TO SEIL ROAD)
- 19 - 24 CROSS SECTIONS- WYNSTONE DRIVE (AUBURN LAKES DRIVE TO HUNTER DRIVE)
- 25 - 29 CROSS SECTIONS- WYNSTONE DRIVE (PARKSIDE DRIVE TO HUNTER DRIVE)
- 30 - 34 CROSS SECTIONS- TROY SHOREWOOD ELEMENTARY SCHOOL (DANTE COURT)
- 35 CROSS SECTIONS- TROY SHOREWOOD ELEMENTARY SCHOOL (OAK COURT)
- 36 CURB AND GUTTER REMOVAL AND REPLACEMENT
- 37 TRAFFIC CONTROL AND PROTECTION FOR SIDEROADS, INTERSECTIONS, AND DRIVEWAYS

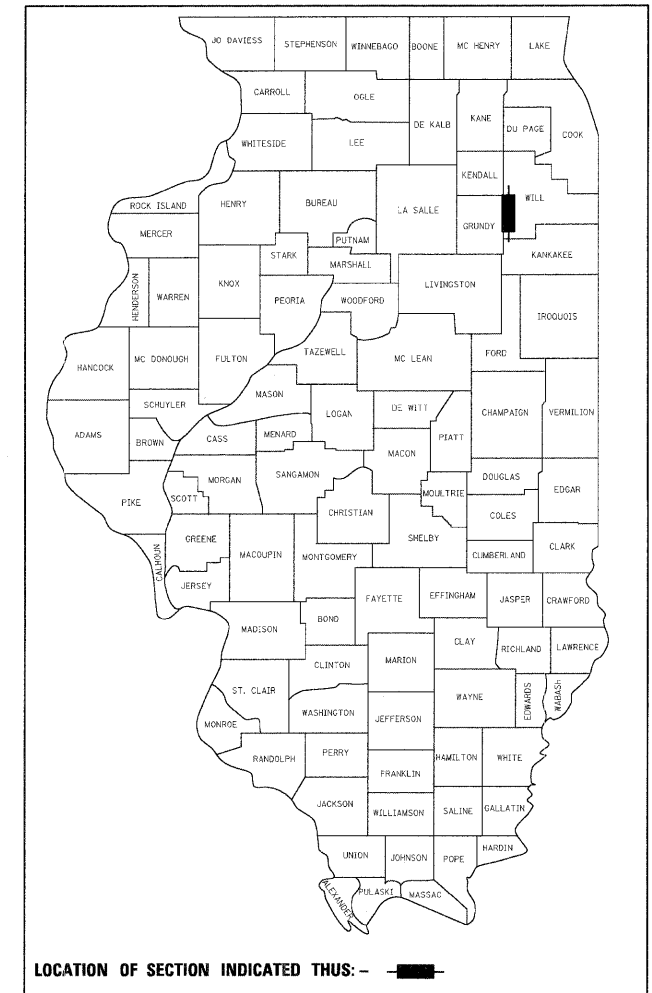
**STATE OF ILLINOIS  
DEPARTMENT OF TRANSPORTATION  
DIVISION OF HIGHWAYS  
PLANS FOR PROPOSED  
FEDERAL AID HIGHWAY**

**SAFE ROUTES TO SCHOOL  
SIDEWALK PROJECT  
VARIOUS LOCATIONS**

**SECTION 08-00024-00-SW  
PROJECT SRTS-4008(016)  
VILLAGE OF SHOREWOOD  
WILL COUNTY**

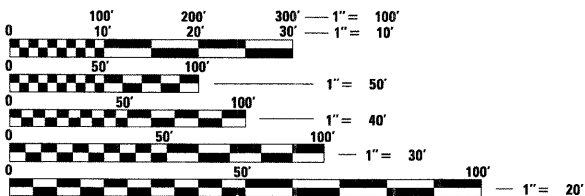
JOB NO.: C-40-004-08

R 9 E



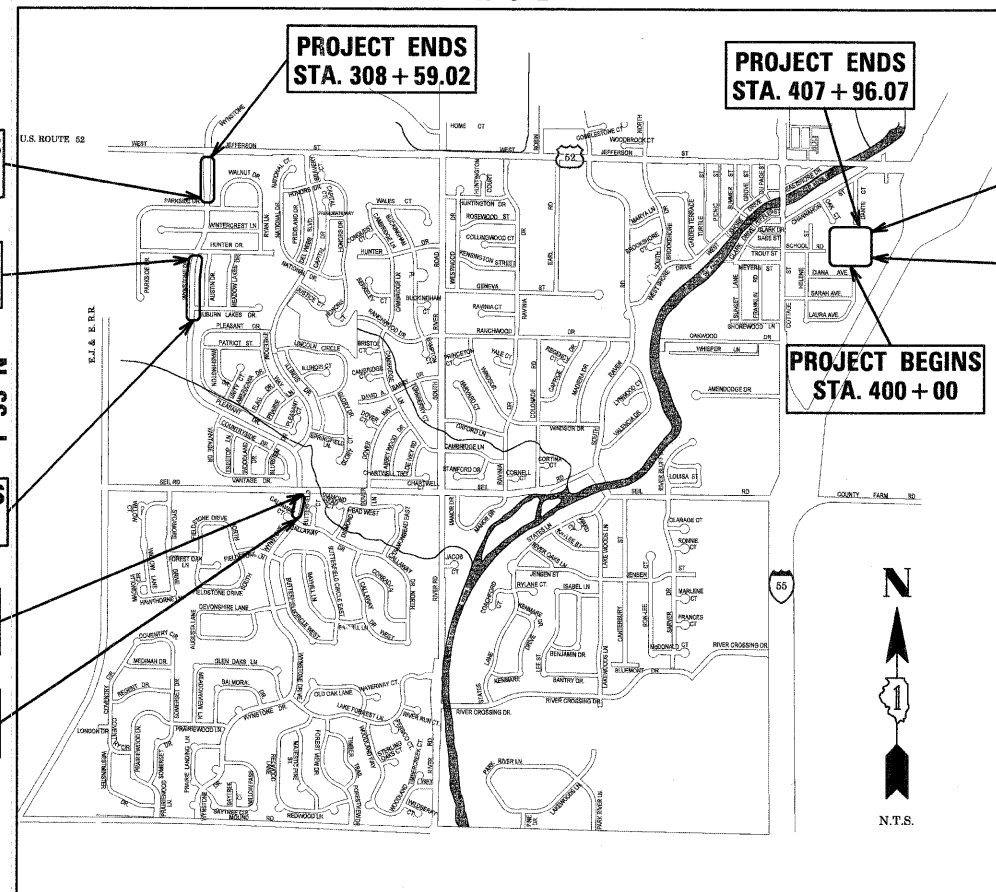
**CHRISTOPHER B. BURKE** ENGINEERING LTD.  
318 ALANA DRIVE  
New Lenox, Illinois 60451 (815) 463-9050

**FEDERAL AID DESIGN ENGINEER: MELCHOR MANGOBA**  
201 W. CENTER COURT  
SCHAMBURG, ILLINOIS 60196-1096  
(847) 705-4408



FULL SIZE PLANS HAVE BEEN PREPARED USING STANDARD ENGINEERING SCALES. REDUCED SIZED PLANS WILL NOT CONFORM TO STANDARD SCALES. IN MAKING MEASUREMENTS ON REDUCED PLANS, THE ABOVE SCALES MAY BE USED.

J.U.L.I.E.  
JOINT UTILITY LOCATION INFORMATION FOR EXCAVATION  
1-800-892-0123  
OR 811



NET LENGTH OF PROJECT = 3250.71 LINEAL FEET

THE CONTRACTOR SHALL BE SOLELY RESPONSIBLE FOR JOB SITE SAFETY AS WELL AS SUPERVISION/DIRECTION AND MEANS/METHODS OF CONSTRUCTION.

**TRAFFIC DATA**  
ADT (YEAR) = 750 (2009 EST.)  
SPEED LIMIT = 25 MPH AND VARIES

STATE OF ILLINOIS  
DEPARTMENT OF TRANSPORTATION  
DIVISION OF HIGHWAYS

APPROVED May 27 2009  
*Richard Chapman*  
MAYOR, VILLAGE OF SHOREWOOD

PASSED May 29 2009  
*Chet Christopher*  
DISTRICT ENGINEER OF LOCAL ROADS AND STREETS

RELEASING FOR BID BASED ON LIMITED REVIEW MAY 29, 2009  
*Devin M. O'Keefe*  
DEPUTY DIRECTOR OF HIGHWAYS, REGION ONE ENGINEER

*Kurtis R. Corrigan* 5-15-09  
ENGINEER DATE

KURTIS R. CORRIGAN  
062-051814  
LICENSED PROFESSIONAL ENGINEER  
OF ILLINOIS

KURTIS R. CORRIGAN  
ILLINOIS REGISTRATION No. 062-051814  
EXPIRATION DATE: 11-30-2009  
PROFESSIONAL DESIGN FIRM No.: 184-001742  
EXPIRATION DATE: 04-30-2009

**CONTRACT NO. 63200**

**PRINTED BY THE AUTHORITY  
OF THE STATE OF ILLINOIS**