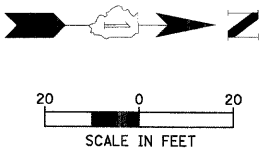
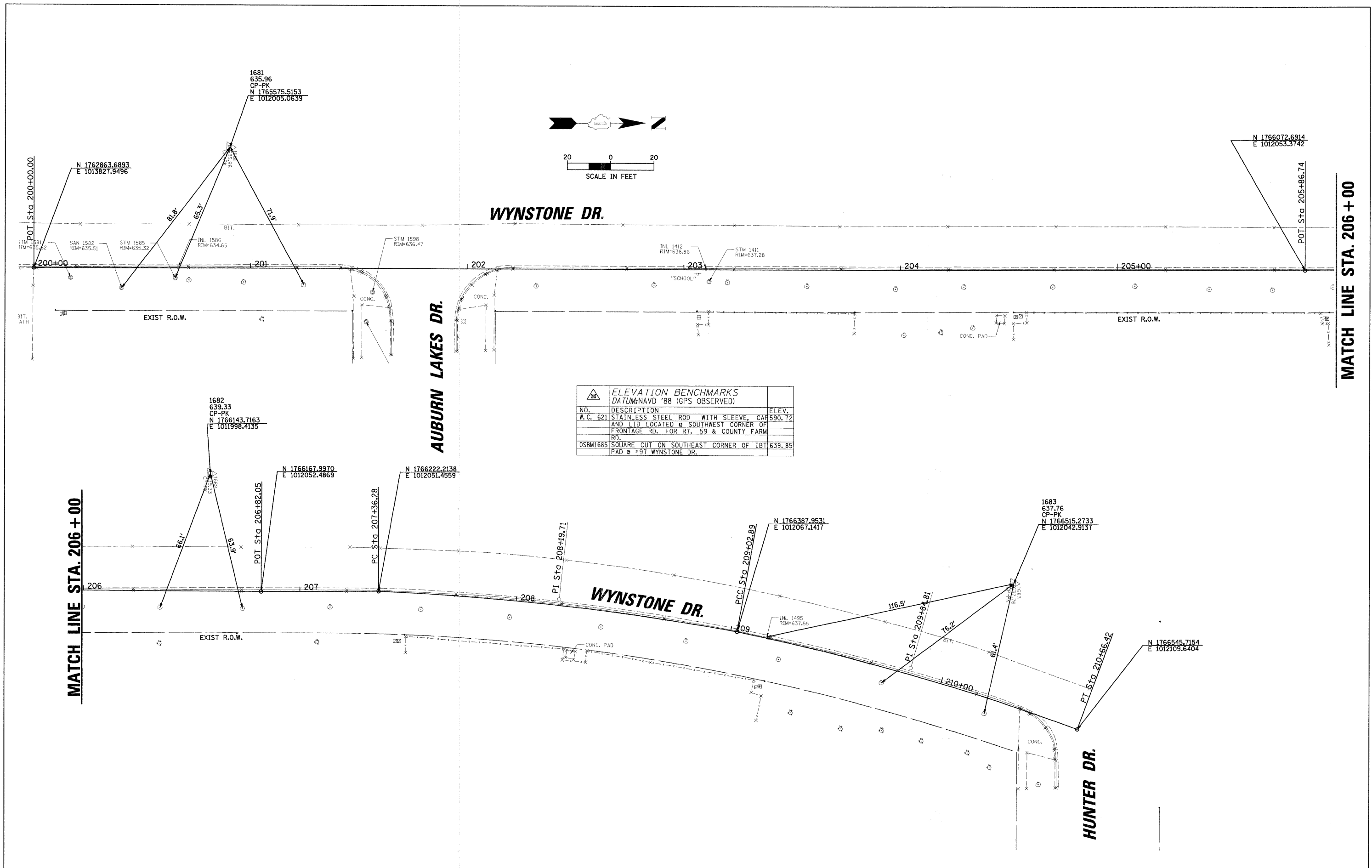


CHRISTOPHER B. BURKE ENGINEERING LTD.
 318 ALANA DRIVE
 New Lenox, Illinois 60451 (815) 463-9050

FEDERAL AID DESIGN ENGINEER: MELCHOR MANGOBA
 201 W. CENTER COURT
 SCHAUMBURG, ILLINOIS 60196-1096
 (847) 705-4408



ELEVATION BENCHMARKS DATUM: NAVD '88 (GPS OBSERVED)		
NO.	DESCRIPTION	ELEV.
W.C. 621	STAINLESS STEEL ROD WITH SLEEVE, CAP AND LID LOCATED @ SOUTHWEST CORNER OF FRONTAGE RD. FOR RT. 59 & COUNTY FARM RD.	590.72
OSBM1685	SQUARE CUT ON SOUTHEAST CORNER OF IBT PAD @ #97 WYNSTONE DR.	639.85

FILE NAME =	USER NAME = CALTERI	DESIGNED CAA	REVISED 5/15/09
N:\Shorewood\070001\070001C\2008\C08-02	C:\civ\1\BNH\C08-05_2.dgn	DRAWN CAA	REVISED -
	PLOT SCALE = 20'	CHECKED KRC	REVISED -
	PLOT DATE = 5/21/2009	DATE 5/15/09	REVISED -

**STATE OF ILLINOIS
 DEPARTMENT OF TRANSPORTATION**

**ALIGNMENT, TIES, AND BENCHMARKS
 WYNSTONE DRIVE (AUBURN LAKES DRIVE TO HUNTER DRIVE)**

SCALE: 20 STA. 200+00 TO STA. 210+66.42

F.A. RTE.	SECTION	COUNTY	TOTAL SHEETS	SHEET NO.
	08-00024-00-SW	WILL	37	7
CONTRACT NO. 63200				
ILLINOIS FED. AID PROJECT				