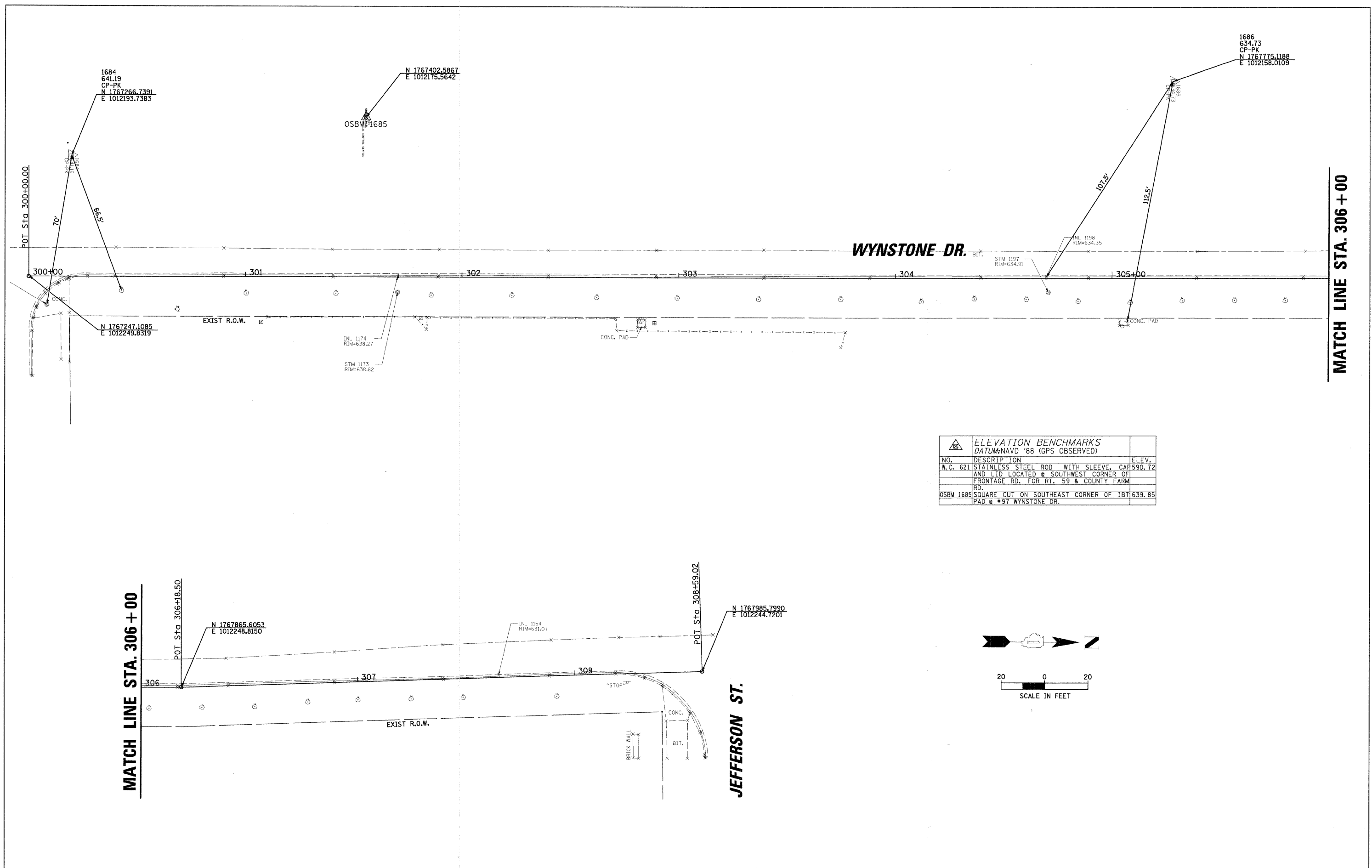
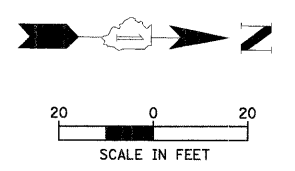


**CHRISTOPHER B. BURKE** ENGINEERING LTD.  
 318 ALANA DRIVE  
 New Lenox, Illinois 60451 (815) 463-9050

**FEDERAL AID DESIGN ENGINEER: MELCHOR MANGOBA**  
 201 W. CENTER COURT  
 SCHAUMBURG, ILLINOIS 60196-1096  
 (847) 705-4408



ELEVATION BENCHMARKS DATUM: NAVD '88 (GPS OBSERVED)		
NO.	DESCRIPTION	ELEV.
W.C. 621	STAINLESS STEEL ROD WITH SLEEVE, CAP AND LID LOCATED @ SOUTHWEST CORNER OF FRONTAGE RD. FOR RT. 59 & COUNTY FARM RD.	590.72
OSBM 1685	SQUARE CUT ON SOUTHEAST CORNER OF BIT PAD @ *97 WYNSTONE DR.	639.85



FILE NAME = N:\Shorewood\070001\070001C\2008\C08-05	USER NAME = CALTERI	DESIGNED CAA	REVISED 5/15/09
C:\v1\B\NH\C08-05_3.dgn		DRAWN CAA	REVISED -
PLOT SCALE = 20'		CHECKED KRC	REVISED -
PLOT DATE = 5/21/2009		DATE 5/15/09	REVISED -

**STATE OF ILLINOIS  
 DEPARTMENT OF TRANSPORTATION**

**ALIGNMENT, TIES, AND BENCHMARKS  
 WYNSTONE DRIVE (PARKSIDE DRIVE TO JEFFERSON STREET)**

SCALE: 20'      STA. 300+00 TO STA. 308+59.02

F.A. RTE.	SECTION	COUNTY	TOTAL SHEETS	SHEET NO.
	08-00024-00-SW	WILL	37	8
CONTRACT NO. 63200				
ILLINOIS FED. AID PROJECT				