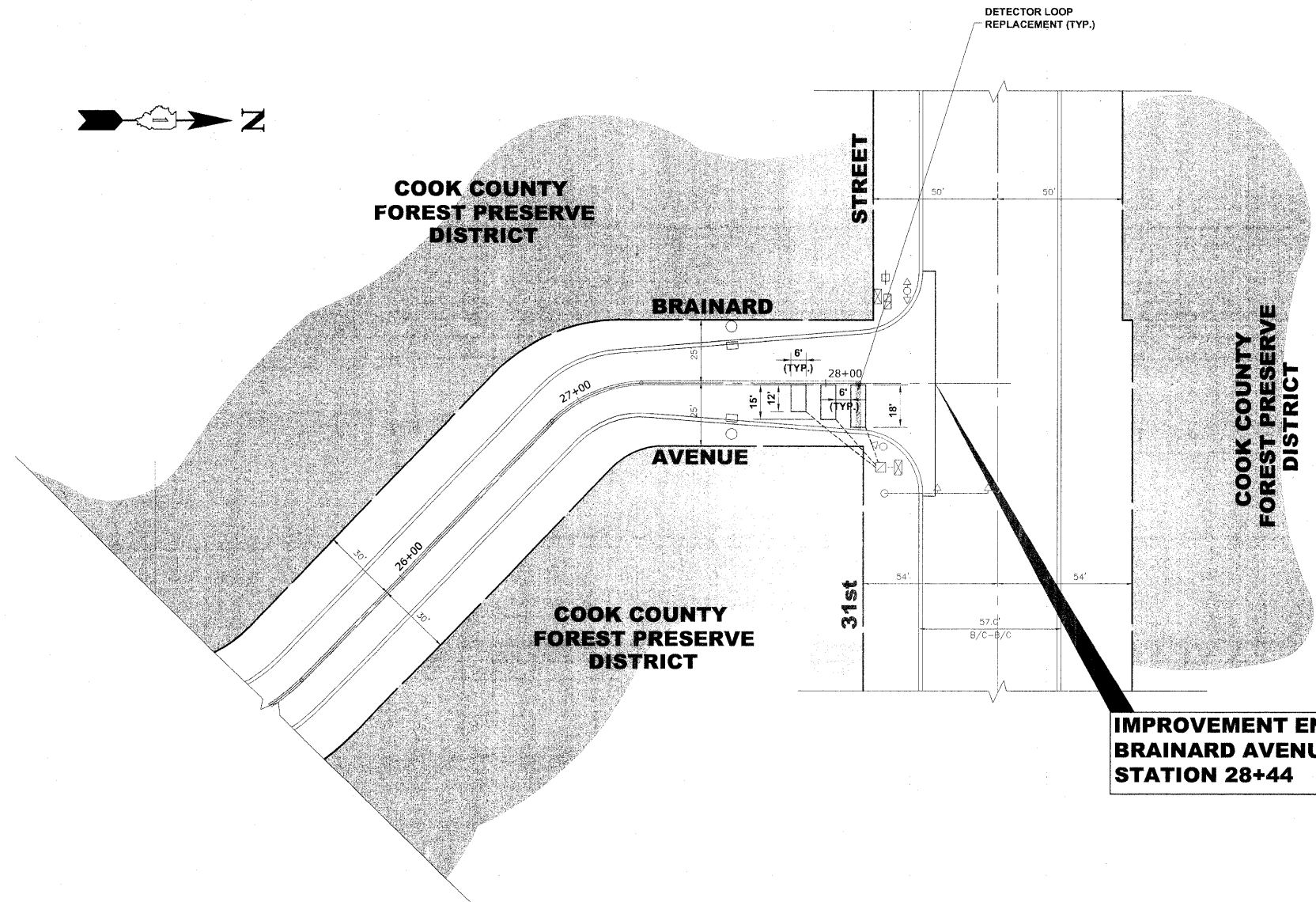
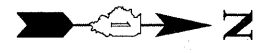


Drawing file: W:\Projects\52009069 - Brainard Ave LAPP\BRAINARD AVENUE\BRAINARD AVENUE.dwg Jun 03, 2009 - 10:24am



LEGEND:

- DETECTOR LOOP
- TRAFFIC SIGNAL POST WITH SIGNAL HEAD
- MAST ARM WITH SIGNAL HEADS
- CONCRETE HANDHOLE
- CONCRETE DOUBLE HANDHOLE
- CONTROLLER
- SERVICE CONNECTION
- GALVANIZED STEEL CONDUIT PUSHED (P) OR IN TRENCH (T) OF SIZE INDICATED

**IMPROVEMENT ENDS
BRAINARD AVENUE
STATION 28+44**



USER NAME	DESIGNED	WOP	REVISED
	DRAWN	LEV	REVISED
PLOT SCALE	CHECKED	WOP	REVISED
PLOT DATE	DATE	6-3-09	REVISED

**STATE OF ILLINOIS
DEPARTMENT OF TRANSPORTATION**

**TRAFFIC SIGNAL DETECTOR LOOP
REPLACEMENT PLAN**

SCALE: 1" = 30' SHEET NO. OF SHEETS STA. TO STA.

F.A.U. RTE	SECTION	COUNTY	TOTAL SHEETS	SHEET NO.
2704	09-00131-00-RS	COOK	14	7
CONTRACT NO. 63206				
FED. ROAD DIST. NO. 1 ILLINOIS FED. AID PROJECT ARA-9003(3c3)				

E.H.E. PROJECT NO. 520-09-06901