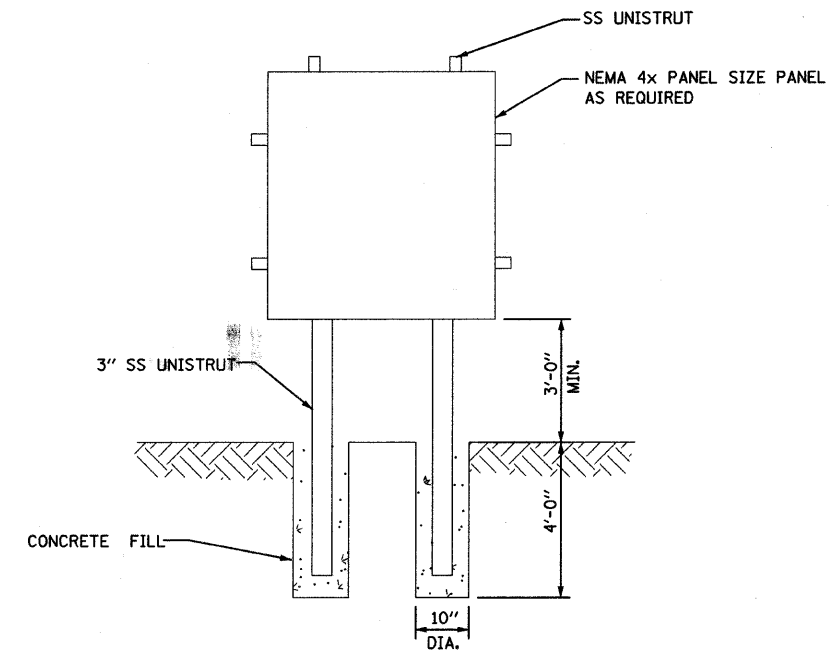


LIGHT POLE BASE PLATE DETAIL

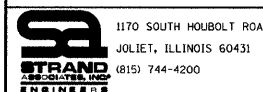


CONTROL PANEL MOUNTING

LIGHTING GENERAL NOTES:

1. 48 HOURS PRIOR TO THE START OF ANY EXCAVATION, THE CONTRACTOR SHALL CALL "JULIE" AT 800-892-0123 FOR FIELD LOCATIONS OF BURIED UTILITIES.
2. LUMINAIRE MOUNTING HEIGHT FOR REGULAR POLES SHALL BE 30.0 FEET.
3. ALL LUMINAIRES SHALL BE 250 WATTS, DISTRIBUTION TYPE II, MEDIUM, CUTOFF, AT 120V, WITH INTEGRAL 120V PHOTOCCELL.
4. SETBACK DIMENSIONS FOR LIGHT POLES SHALL BE 2.0 FEET FROM THE FACE OF THE LIGHT POLE FOUNDATION TO THE EDGE OF TRAVELED PAVEMENT (EOP).
5. LIGHT FIXTURE MOUNTING HEIGHT IS DEFINED AS THE DISTANCE FROM THE CENTERLINE OF THE TENON TO THE BOTTOM OF THE ANCHOR BASE.
6. THE INSTALLING CONTRACTOR WILL PROVIDE A UL LISTED GROUNDING CONNECTOR AT EACH SERVICE AND LIGHT POLE. BURNDY K2C23, T&B SP4DL OR APPROVED EQUAL.
7. LIGHT POLES SHALL NOT BE INSTALLED WITHOUT LUMINAIRES.
8. LIGHT POLES SHALL BE SET PLUMB ON THE FOUNDATION WITHOUT THE USE OF LEVELING NUTS, WASHERS OR SHIMS.

FILE NAME = SA\JOL\65908--65908\65908\084\Micros\Sheets\0165908084-LP2.dgn



USER NAME = vanessaf	DESIGNED - VLF	REVISED -
PLOT SCALE = 20,0000 ' / IN.	DRAWN - KAS	REVISED -
PLOT DATE = 5/22/2009	CHECKED - JAR	REVISED -
	DATE -	REVISED -

**STATE OF ILLINOIS
DEPARTMENT OF TRANSPORTATION**

ELECTRICAL DETAILS			
SCALE: AS SHOWN	SHEET NO.	OF SHEETS	STA. TO STA.

F.A. RTE.	SECTION	COUNTY	TOTAL SHEETS	SHEET NO.
	06-00069-00-BR	COOK	26	15
CONTRACT NO. 63217				
FED. ROAD DIST. NO. ILLINOIS FED. AID PROJECT				