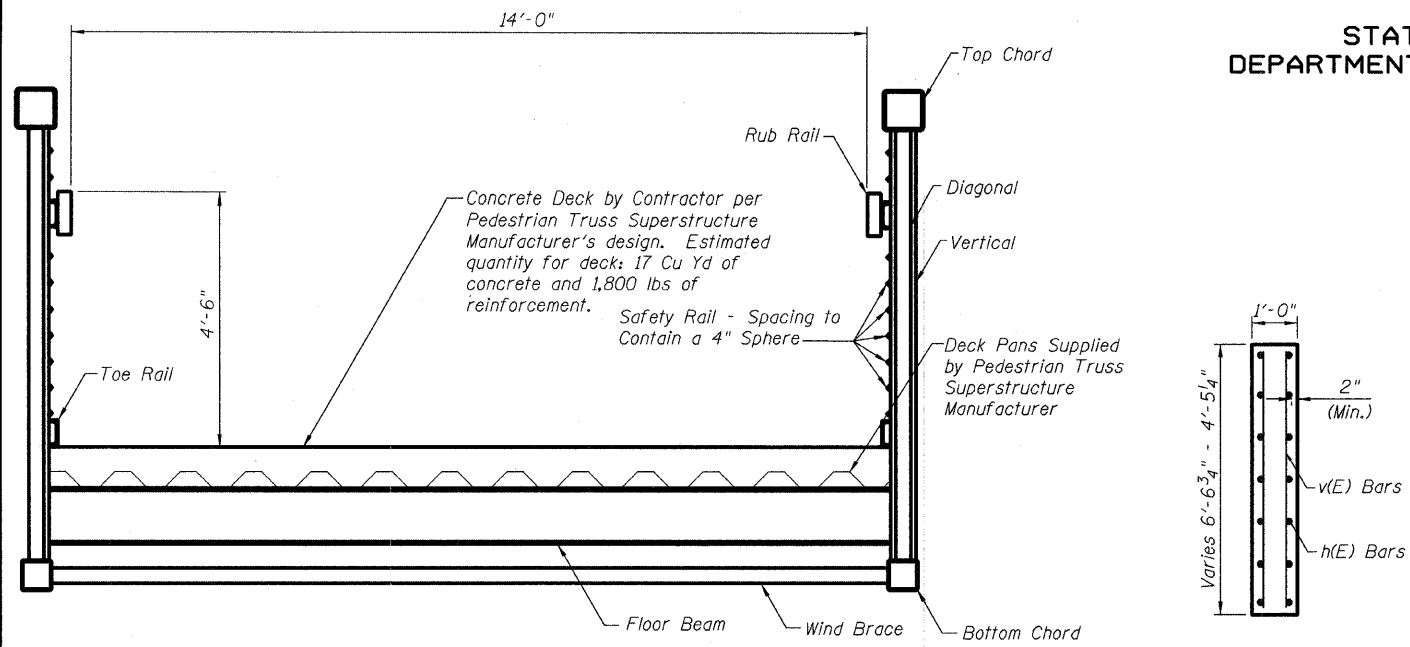
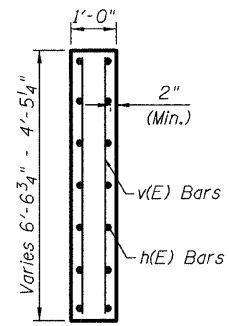


STATE OF ILLINOIS
DEPARTMENT OF TRANSPORTATION

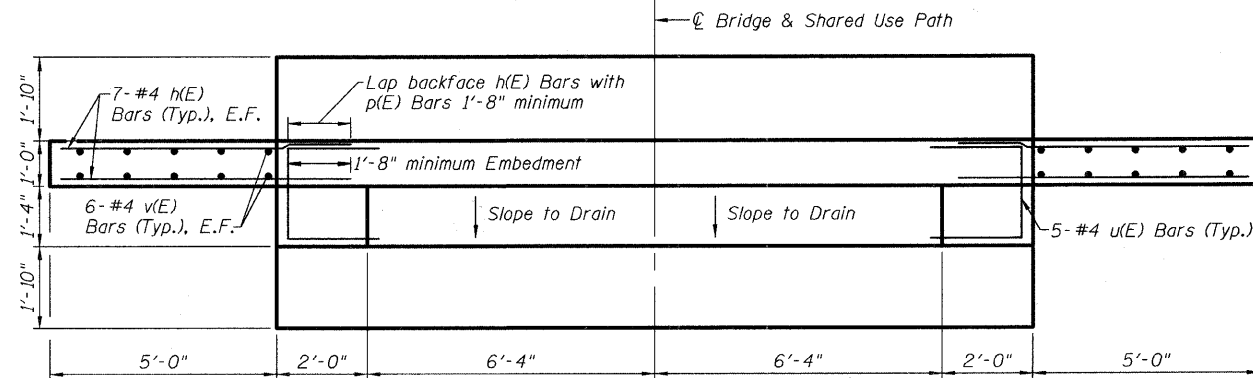


CROSS SECTION

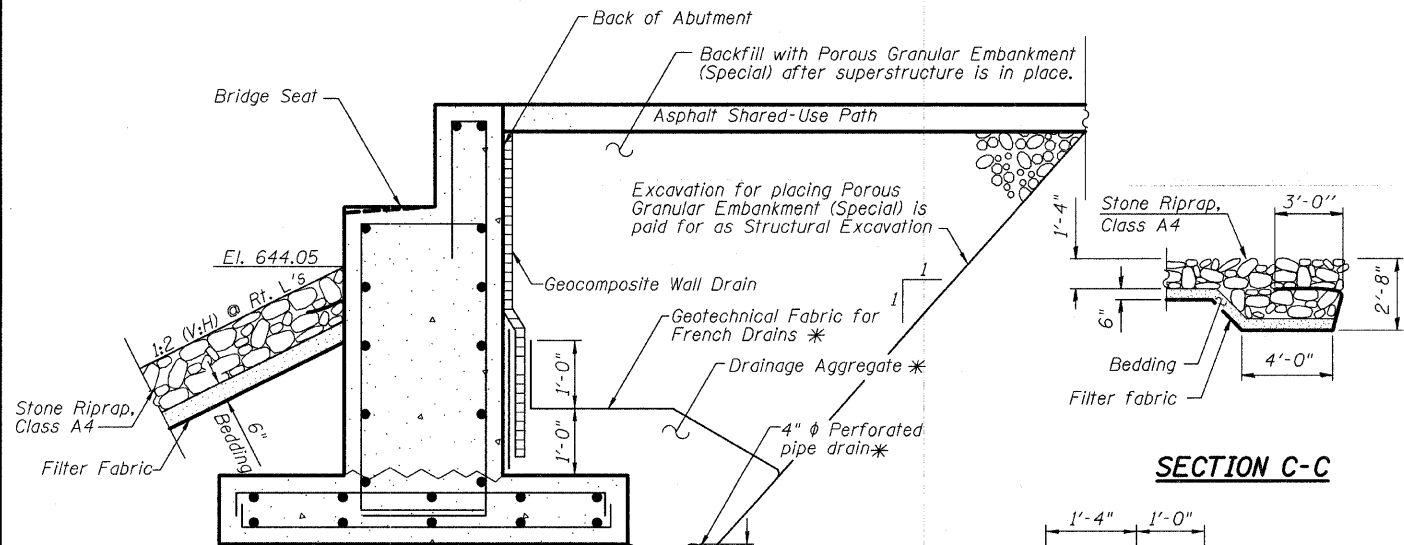
(To be finalized by Pedestrian Truss Superstructure Manufacturer)



SECTION A-A



ABUTMENT PLAN



SECTION C-C

SECTION THRU ABUTMENT

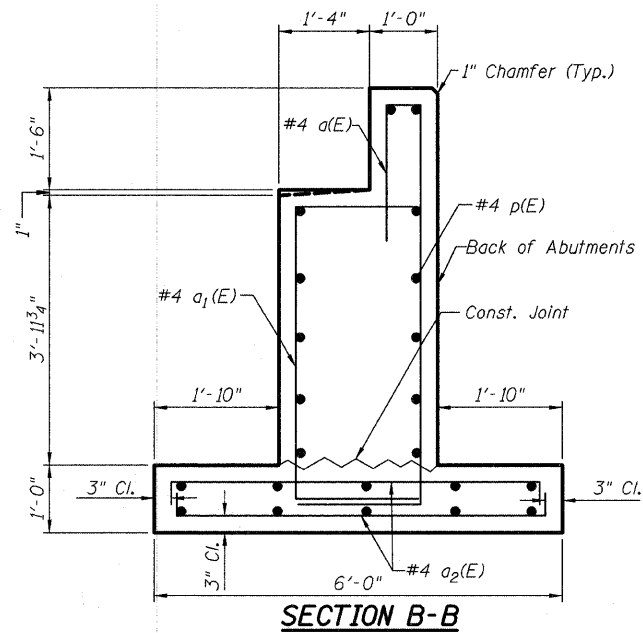
(Horiz. Dim. @ Rt. L's)

*Included in the cost of Pipe Underdrains for Structures.

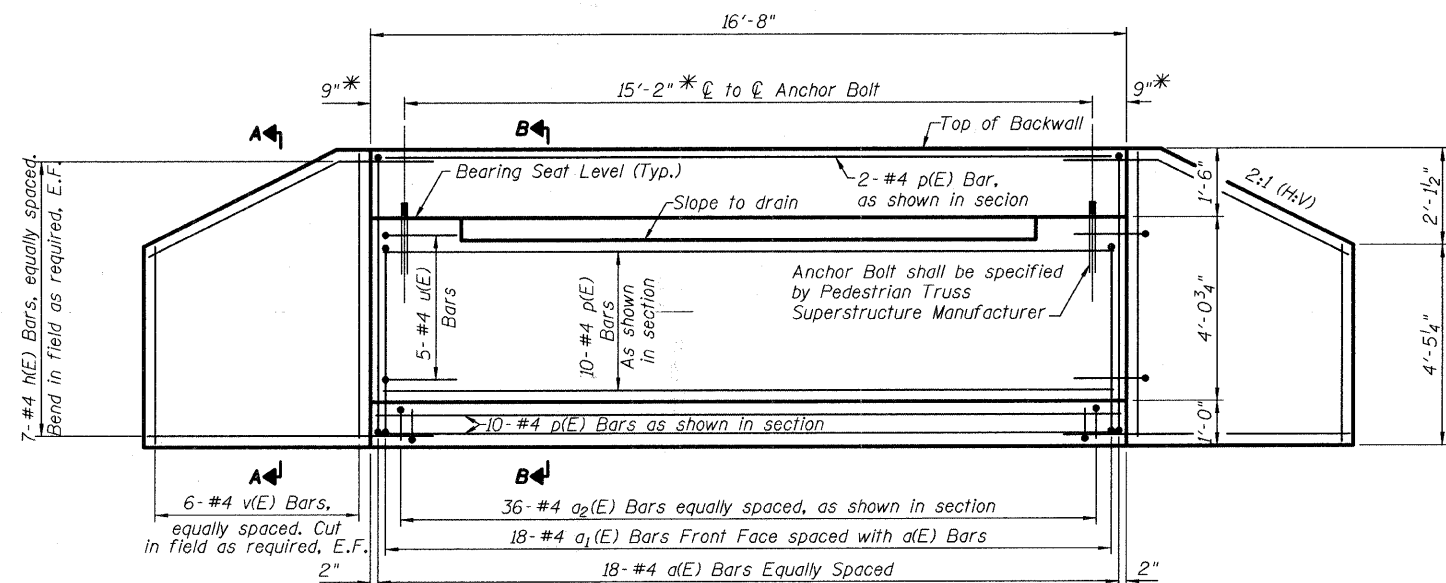
Note:
All drainage system components shall extend to 2'-0" from the end of abutment except outlet pipe shall extend until intersecting with the side slopes. The pipes shall drain into riprap.

BILL OF BARS

Bar	No.	Size	Length	Shape
a(E)	36	#4	11'-7"	[]
a1(E)	36	#4	8'-6"	[]
a2(E)	72	#4	6'-6"	[]
p(E)	24	#4	16'-4"	[]
u(E)	20	#4	6'-0"	[]
h(E)	56	#4	6'-10"	[]
v(E)	48	#4	6'-2"	[]

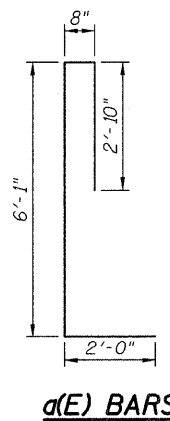


SECTION B-B

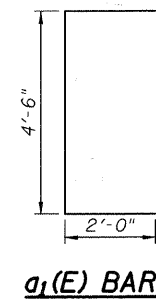


ABUTMENT ELEVATION

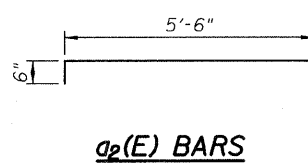
*Verify with Pedestrian Truss Superstructure Manufacturer before setting Anchor Bolts.



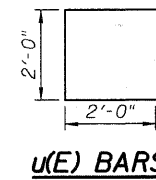
a(E) BARS



a1(E) BARS



a2(E) BARS



u(E) BARS

**STRUCTURAL DETAILS
HAWTHORNE SCHOOL
PEDESTRIAN BRIDGE
STA. 504+77.69**

STRAND ASSOCIATES, INC.

DESIGNED	RRD
CHECKED	JAR
DRAWN	KAS
CHECKED	JAR

SHEET NO. 2	F.A. RTE.	SECTION	COUNTY	TOTAL SHEETS	SHEET NO.
		06-00069-00-BR	COOK	26	17
3 SHEETS	STRUCTURE DETAILS		CONTRACT NO. 63217		
FED. ROAD DIST. NO.		ILLINOIS	FED. AID PROJECT		