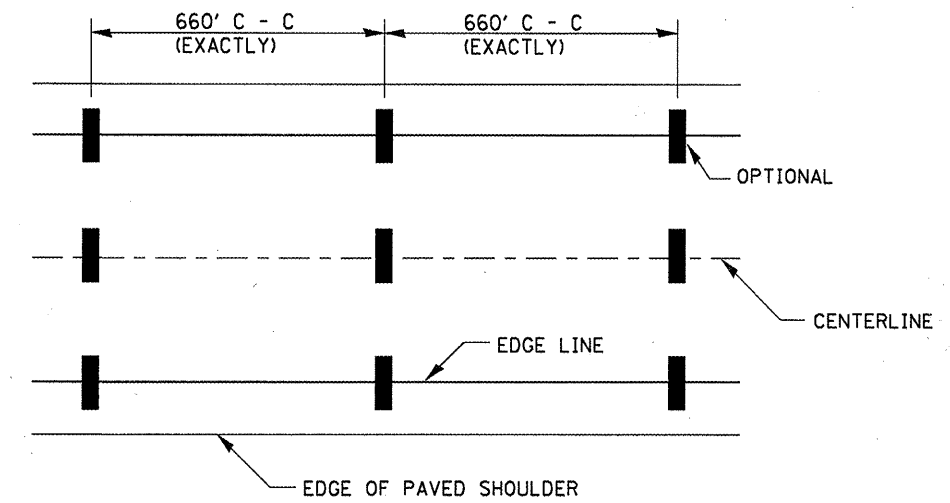
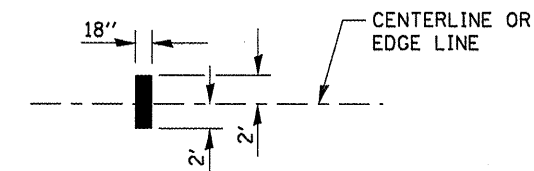


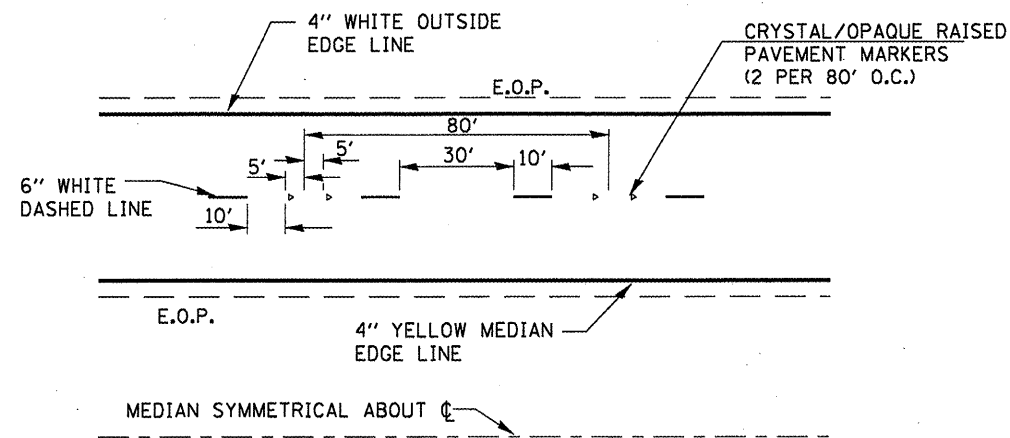
TYPICAL PAVEMENT MARKING FOR ENTRANCE RAMP TERMINALS



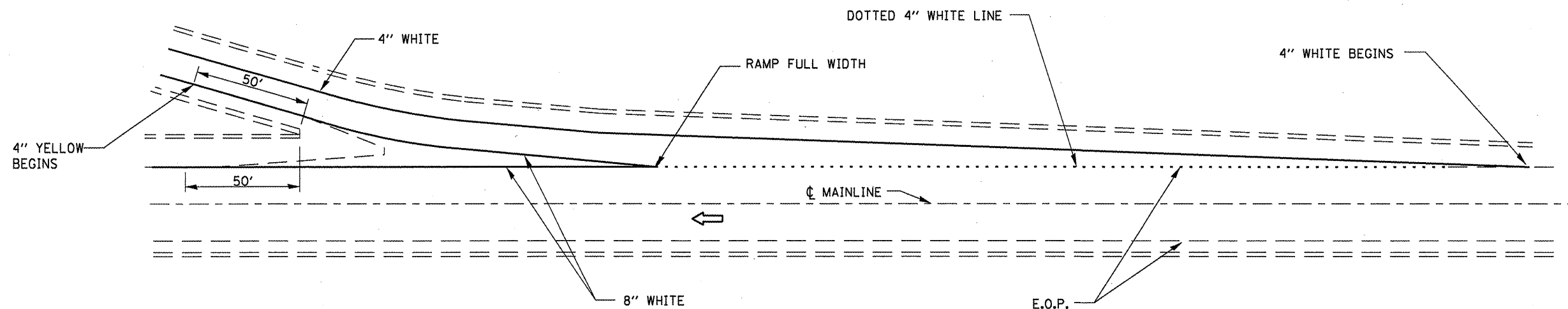
IT WILL BE NECESSARY TO HAVE A REPRESENTATIVE OF THE STATE POLICE PRESENT SO THAT THE ACCURACY OF MEASUREMENT CAN BE ATTESTED TO IN COURT.



AERIAL SPEED CHECK ZONES



TYPICAL PAVEMENT MARKINGS



TYPICAL PAVEMENT MARKINGS FOR EXIT RAMP TERMINALS

FILE NAME =	USER NAME = woodshankr1	DESIGNED - RON WOODSHANK	REVISED -
ct:\pav_work\PM\DOT\WOODSHANKR1\dms91650	D366984.dgn	DRAWN - RON WOODSHANK	REVISED -
	PLOT SCALE = 100.0000' / IN.	CHECKED -	REVISED -
	PLOT DATE = Jun 19, 2009 - 11:01:45 AM	DATE -	REVISED -

STATE OF ILLINOIS
DEPARTMENT OF TRANSPORTATION

TYPICAL PAVEMENT MARKING

SCALE: SHEET NO. 1 OF 1 SHEETS STA. TO STA.

F.A.I. RTE. 57	SECTION VARIOUS	COUNTY KANKAKEE	TOTAL SHEETS 5	SHEET NO. 5
CONTRACT NO. 66984				ILLINOIS