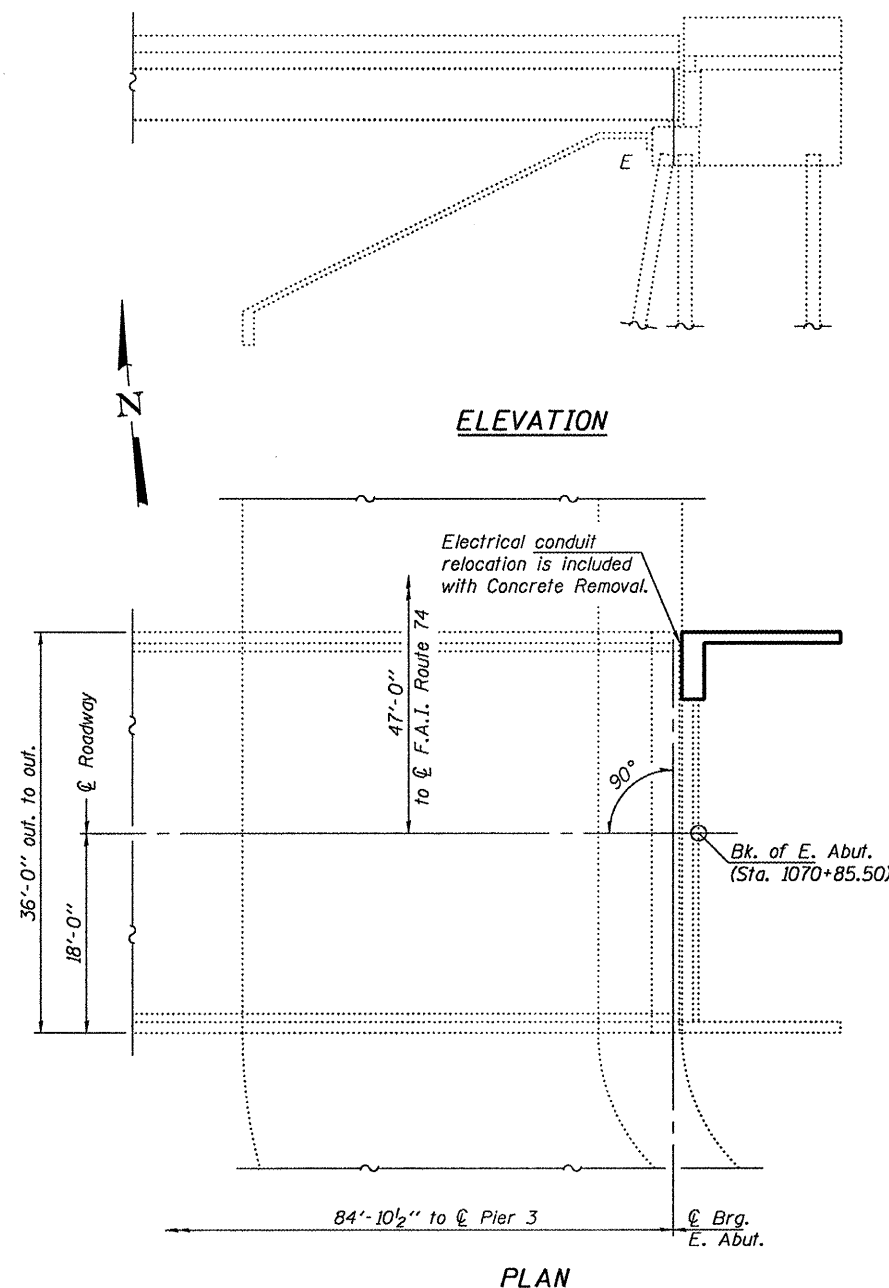


STATE OF ILLINOIS
DEPARTMENT OF TRANSPORTATION

GENERAL NOTES

Reinforcement bars shall conform to the requirements of ASTM A 706 Gr 60. See Special Provisions.
Reinforcement bars designated (E) shall be epoxy coated.
Plan dimensions and details relative to existing plans are subject to nominal construction variations. The Contractor shall field verify existing dimensions and details affecting new construction and make necessary approved adjustments prior to construction or ordering of materials. Such variations shall not be cause for additional compensation for a change in scope of the work, however, the Contractor will be paid for the quantity actually furnished at the unit price bid for the work.
Existing reinforcement bars extending into the removal area shall be cleaned, straightened and incorporated into the new construction. Any reinforcement bars that are damaged during concrete removal shall be replaced with an approved bar splicer or anchorage system. Cost included with Concrete Removal.
Joint openings shall be adjusted according to Article 520.04 of the Std. Specs. when the deck is poured at an ambient temperature other than 50° F.



ELEVATION

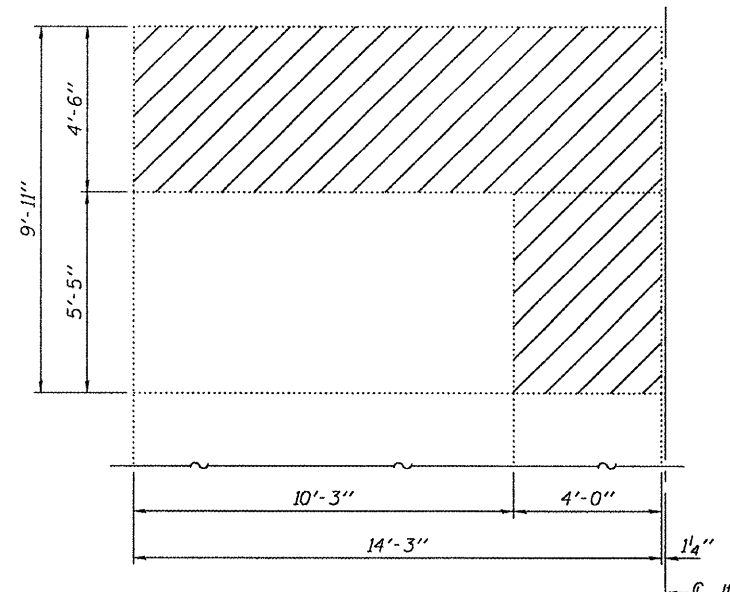
PLAN

* Epoxy grout $v_1(E)$ bars in 9" min. holes according to Article 584 of the Standard Specifications.



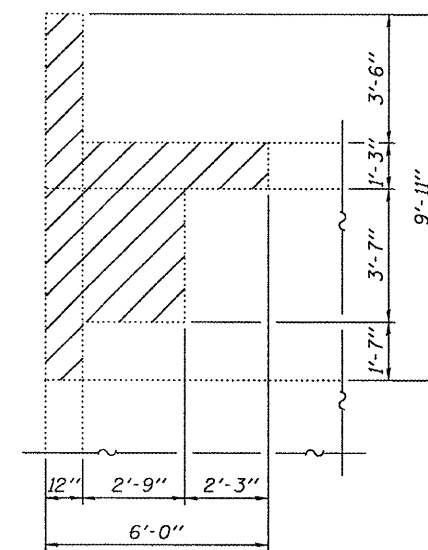
Expires: November 30, 2010

DESIGNED	<i>Angie Dejean</i>	JUNE 18, 2009
CHECKED	<i>R. E. Anderson</i>	EXAMINED
DRAWN	Kyle M. Steffen	PASSED
CHECKED	<i>ASB GLE</i>	



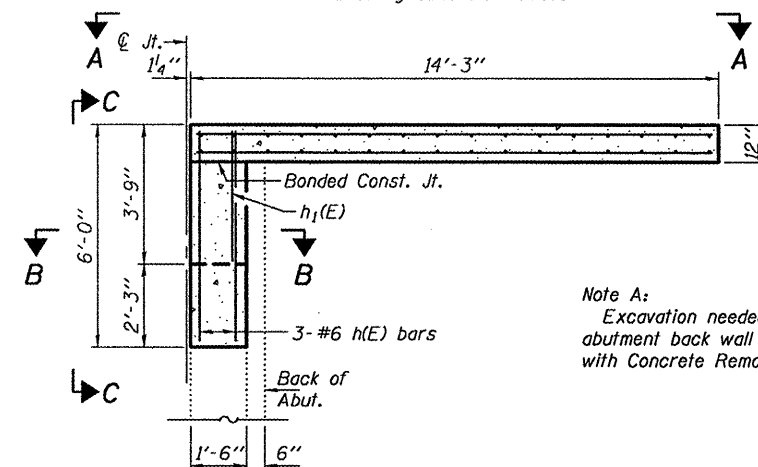
SECTION A-A

Showing Concrete Removal



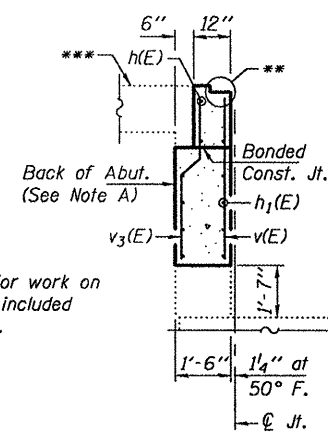
SECTION C-C

Showing Concrete Removal



PARTIAL PLAN - EAST ABUT.

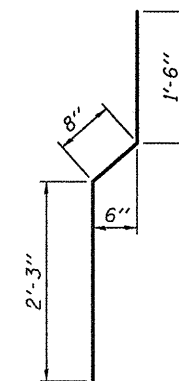
Note A:
Excavation needed for work on abutment back wall is included with Concrete Removal.



SECTION B-B

*** Re-use existing neoprene expansion joint. (New studs to be installed as needed) See sheet 2 of 2 for anchor bolt locations. Cost included with Concrete Superstructure.

*** See Roadway Plans for Approach Pavement Removal and Replacement Details.



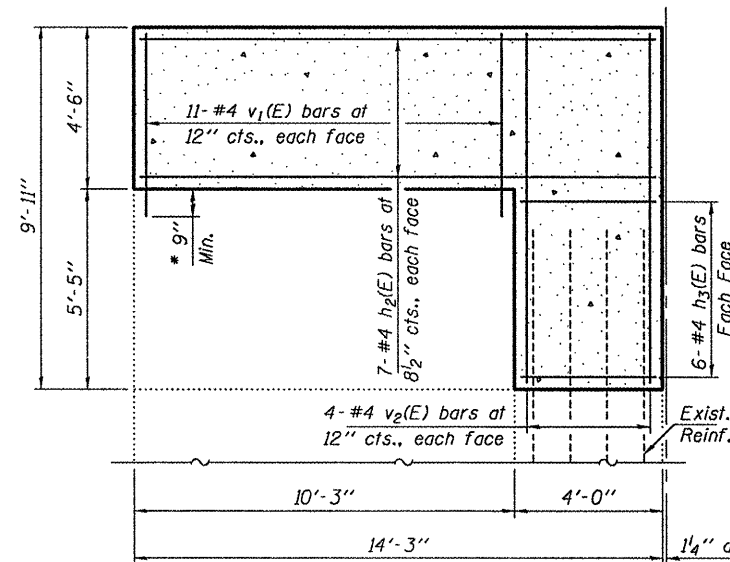
BAR $v_3(E)$

BILL OF MATERIAL

Bar	No.	Size	Length	Shape
$h(E)$	3	#6	5'-9"	—
$h_1(E)$	8	#5	3'-6"	—
$h_2(E)$	14	#4	14'-0"	—
$h_3(E)$	12	#4	3'-9"	—
$v(E)$	3	#4	4'-5"	—
$v_1(E)$	22	#4	5'-2"	—
$v_2(E)$	8	#4	9'-8"	—
$v_3(E)$	3	#4	5'-4"	—
Concrete Removal			Cu. Yd.	3.0
Concrete Superstructure			Cu. Yd.	4.0
Reinforcement Bars, Epoxy Coated			Pound	360

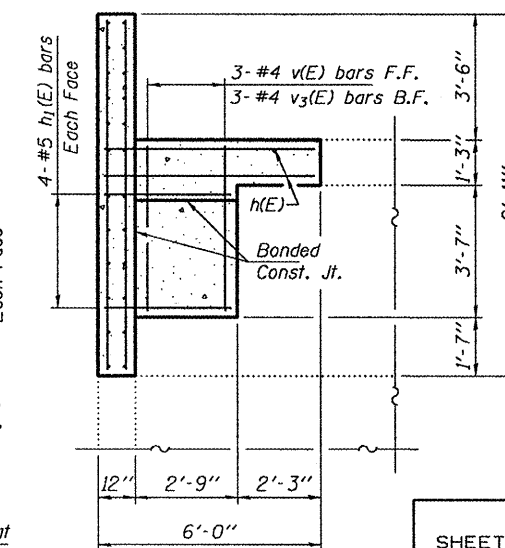
TOTAL BILL OF MATERIAL

ITEM	UNIT	QUANTITY
Concrete Removal	Cu. Yd.	3.0
Concrete Superstructure	Cu. Yd.	4.0
Reinforcement Bars, Epoxy Coated	Pound	360



SECTION A-A

Showing proposed



SECTION C-C

Showing proposed

PLAN, ELEVATION, & REPAIR DETAILS
E.B. F.A.I. RT. 74 OVER SPOON RIVER
SN 048-0052

SHEET NO. 1 2 SHEETS	F.A.I. RTE.	SECTION	COUNTY	TOTAL SHEETS	SHEET NO.
	74	(48-29B)1-2	KNOX	9	8
FED. ROAD DIST. NO.			ILLINOIS	FED. AID PROJECT	
CONTRACT NO. 68858					