

STATE OF ILLINOIS
DEPARTMENT OF TRANSPORTATION
DIVISION OF HIGHWAYS
PROPOSED
CONTRACT MAINTENANCE

F.A.I. RTE.	SECTION	COUNTY	TOTAL SHEETS	SHEET NO.
I-55	54-4 INT-RS	LOGAN	6	1
ILLINOIS			72C95	

FOR INDEX OF SHEETS, SEE SHEET NO. 2

- 1 COVER SHEET
- 2 GENERAL NOTES
- 3 SUMMARY OF QUANTITIES
- 4 TYPICAL SECTIONS
- 5 SUMMARY SHEET
- 6 DETAILS

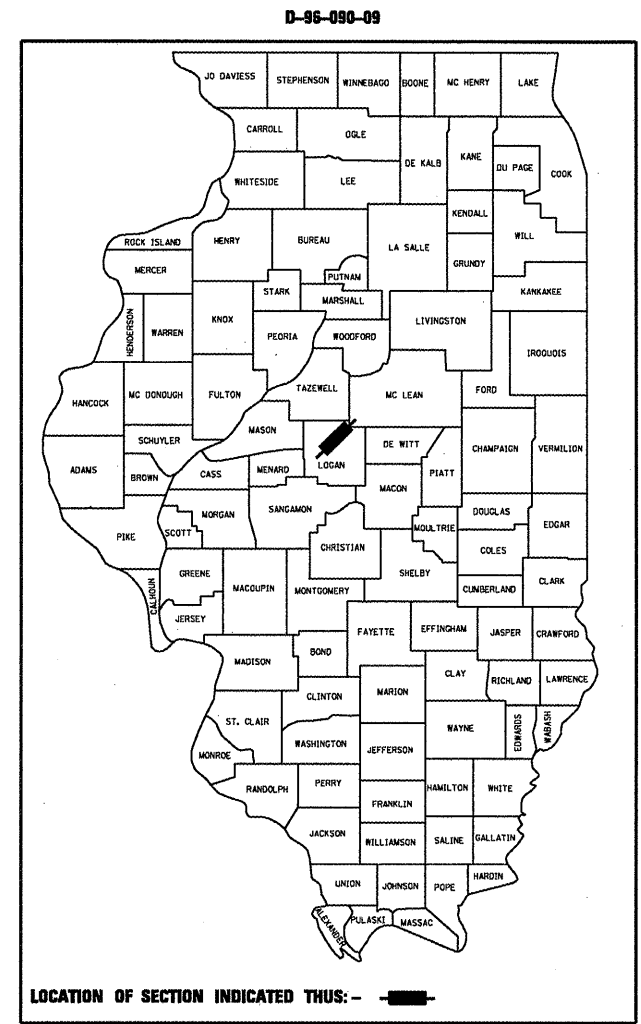
HIGHWAY STANDARDS

- 701101-02
- 701400-03
- 701406-05
- 701411-05
- 701426-03
- 701901-01
- 780001-02
- 781001-03
- 000001-05

FAI ROUTE 55 (I-55)
SECTION 54-4 INT-RS

LOGAN COUNTY

C-96-090-09



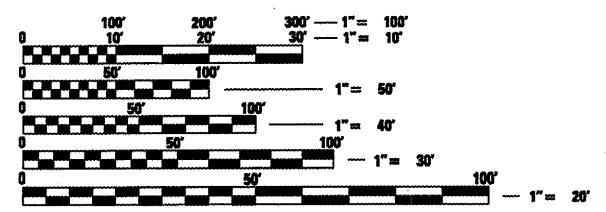
ADT'S : 19,500 (SOUTH OF BL-55)
 21,300 (NORTH OF BL-55)

STATE OF ILLINOIS
DEPARTMENT OF TRANSPORTATION
DIVISION OF HIGHWAYS

SUBMITTED May 14 2009
Rose Z. Quirk
 DEPUTY DIRECTOR OF HIGHWAYS, REGION ENGINEER

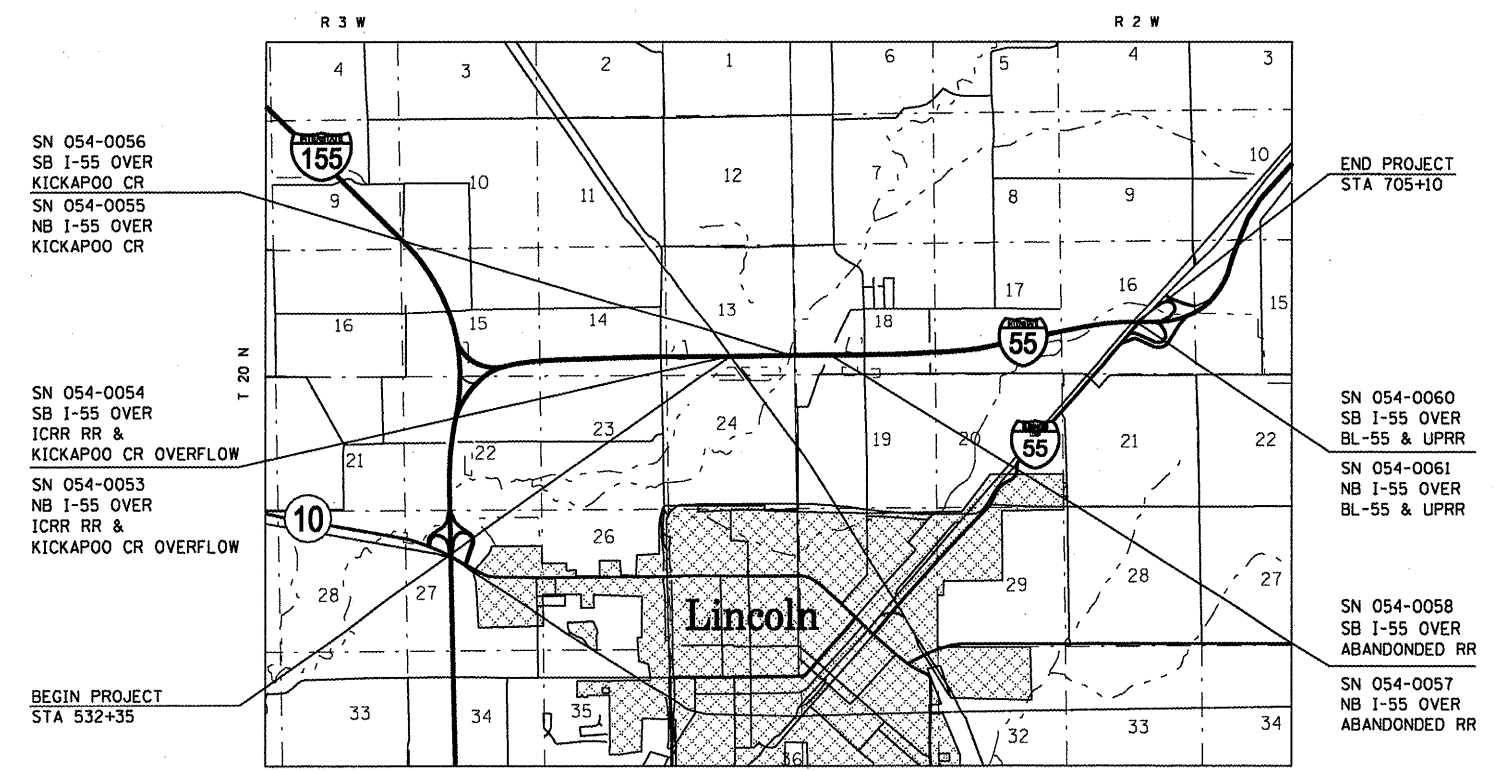
June 26, 2009
Charles J. Ingervalle
 ENGINEER OF DESIGN AND ENVIRONMENT

June 26, 2009
Christine M. Reed
 DIRECTOR OF HIGHWAYS, CHIEF ENGINEER



FULL SIZE PLANS HAVE BEEN PREPARED USING STANDARD ENGINEERING SCALES. REDUCED SIZED PLANS WILL NOT CONFORM TO STANDARD SCALES. IN MAKING MEASUREMENTS ON REDUCED PLANS, THE ABOVE SCALES MAY BE USED.

J.U.L.I.E.
 JOINT UTILITY LOCATION INFORMATION FOR EXCAVATION
 1-800-892-0123
 OR 811



SCALE

GROSS LENGTH = 17,275 FT. = 3.27 MILE
 NET LENGTH = 2,400 FT. = 0.45 MILE

PROJECT ENGINEER: SAL MADONIA 217-782-4761
 SQUAD LEADER: JEFFREY P. MYERS 217-524-7940

CONTRACT NO. 72C95

PRINTED BY THE AUTHORITY
OF THE STATE OF ILLINOIS

GENERAL NOTES

1. THE CONTRACTOR SHALL BE RESPONSIBLE FOR PROTECTING UTILITY PROPERTY FROM CONSTRUCTION OPERATIONS AS OUTLINED IN ARTICLE 107.31 OF THE STANDARD SPECIFICATIONS. THE JULIE NUMBER IS 800-892-0123. A MINIMUM OF FORTY-EIGHT HOURS ADVANCE NOTICE IS REQUIRED. ANY DAMAGE TO THE UNDERGROUND FACILITIES, CAUSED BY THE CONTRACTOR SHALL BE REPAIRED TO THE SATISFACTION OF THE DEPARTMENT AT THE CONTRACTOR'S EXPENSE, INCLUDING TEMPORARY REPAIRS WHICH MAY BE REQUIRED TO KEEP THE FACILITY OPERATIONAL WHILE MATERIAL IS BEING OBTAINED TO MAKE PERMANENT REPAIRS.
2. THE LOCATIONS OF THOSE BURIED AND ABOVEGROUND UTILITIES SHOWN ARE APPROXIMATE. ARE SHOWN FOR CONTRACTOR INFORMATIONAL USE ONLY, AND ARE NOT TO BE REFERENCED FOR CONSTRUCTIONS PURPOSES. THE IMPLIED PRESENCE OR ABSENCE OF UTILITIES IS NOT TO BE CONSTRUED BY THE OWNER, ENGINEER, CONTRACTOR, OR SUBCONTRACTORS TO BE AN ACCURATE AND COMPLETE REPRESENTATION OF UTILITIES THAT MAY OR MAY NOT EXIST ON THE CONSTRUCTION SITE. BURIED AND ABOVEGROUND UTILITY LOCATION, IDENTIFICATION, AND MARKING ARE THE SOLE RESPONSIBILITY OF THE CONTRACTOR. REROUTING, DISCONNECTION, PROTECTION, ETC. OF ANY UTILITIES MUST BE COORDINATED BETWEEN THE CONTRACTOR, UTILITY COMPANY, AND OWNER. SITE SAFETY, INCLUDING THE AVOIDANCE OF HAZARDS ASSOCIATED WITH BURIED AND ABOVEGROUND UTILITIES, REMAINS THE SOLE RESPONSIBILITY OF THE CONTRACTOR.
3. THE THICKNESS OF HOT-MIX ASPHALT MIXTURES SHOWN ON THE PLANS IS THE NOMINAL THICKNESS. DEVIATIONS FROM THE NOMINAL THICKNESS WILL BE PERMITTED WHEN SUCH DEVIATIONS OCCUR DUE TO IRREGULARITIES IN THE EXISTING SURFACE OR BASE ON WHICH THE BITUMINOUS MIXTURE IS PLACED.
4. AGGREGATE (PRIME COAT): FA 20 MAY BE USED IN ADDITION TO THE GRADATIONS LISTED IN THE 2ND PARAGRAPH OF ARTICLE 1003.03(c).
5. FOR STABILIZATION, ALL TYPE III BARRICADES SHALL REQUIRE A MINIMUM OF FOUR SANDBAGS PER BARRICADE.
6. ALL ELEVATIONS REFER TO U.S.G.S. MEAN SEA LEVEL DATUM.
7. THE FOLLOWING RATES OF APPLICATION HAVE BEEN USED IN CALCULATING PLAN QUANTITIES:

GRANULAR MATERIALS	2.05	TONS/CU YD
BITUMINOUS MATERIAL (PRIME COAT)	0.00038	TON/SQ YD
HOT-MIX ASPHALT SURF CSE	112	LBS/SQ YD-IN
HOT-MIX ASPHALT SHOULDERS	112	LBS/SQ YD-IN
AGGREGATE (PRIME COAT)	0.002	TON/SQ YD
8. ANY REFERENCE TO A STANDARD IN THESE PLANS SHALL BE INTERPRETED TO MEAN THE EDITION AS INDICATED BY THE SUBNUMBER LISTED ON THE INDEX OF SHEETS OR THE COPY OF THE STANDARD INCLUDED IN THESE PLANS.
9. UNLESS NOTED OTHERWISE, STATIONS AND OFFSETS REFER TO CENTERLINE OF PROJECT.
10. IN ADDITION TO FIELD SURVEYS AND AERIAL SURVEYS, PLAN DIMENSIONS AND DETAILS RELATIVE TO THE EXISTING FACILITIES HAVE BEEN TAKEN FROM EXISTING PLANS AND ARE SUBJECT TO CONSTRUCTION VARIATIONS. IT SHALL BE THE CONTRACTOR'S RESPONSIBILITY TO VERIFY SUCH DIMENSIONS AND DETAILS IN THE FIELD. SUCH VARIATIONS SHALL NOT BE A CAUSE FOR ADDITIONAL COMPENSATION DUE TO A CHANGE IN THE SCOPE OF THE WORK. HOWEVER, THE CONTRACTOR WILL BE PAID FOR THE QUANTITY ACTUALLY FURNISHED AT THE UNIT PRICE BID FOR THE WORK.
11. WHERE SECTION OR SUBSECTION MONUMENTS ARE ENCOUNTERED, THE ENGINEER SHALL BE NOTIFIED BEFORE SUCH MONUMENTS ARE REMOVED. THE CONTRACTOR SHALL PROTECT AND CAREFULLY PRESERVE ALL MONUMENTS UNTIL AN AUTHORIZED SURVEYOR OR AGENT HAS WITNESSED OR OTHERWISE REFERENCED THEIR LOCATION. THE CONTRACTOR SHALL BE RESPONSIBLE FOR HAVING AN AUTHORIZED SURVEYOR RE-ESTABLISH ANY SECTION OR SUBSECTION MONUMENTS DESTROYED BY HIS OPERATIONS.
12. CONCRETE PAVEMENT AREAS TO BE MILLED WILL BE PAID FOR AS HOT-MIX ASPHALT SURFACE REMOVAL, VARIABLE DEPTH.

COMMITMENTS:

THERE ARE NO COMMITMENTS

The following mixture requirements are applicable for this project:

Mix No.	No. 1	No. 2
Mixture Use(s)	Polymer Surface	Shoulders
AC/PG:	SBS PG 70-22	PG 64-22
Design Air Voids:	4.0% @ N Design=105	4.0% @ N Design=50
Mixture Composition: (Gradation Mixture)	IL 9.5 or 12.5	IL 9.5 or 12.5
Friction Aggregate:	Mix "D"	Mix "C"

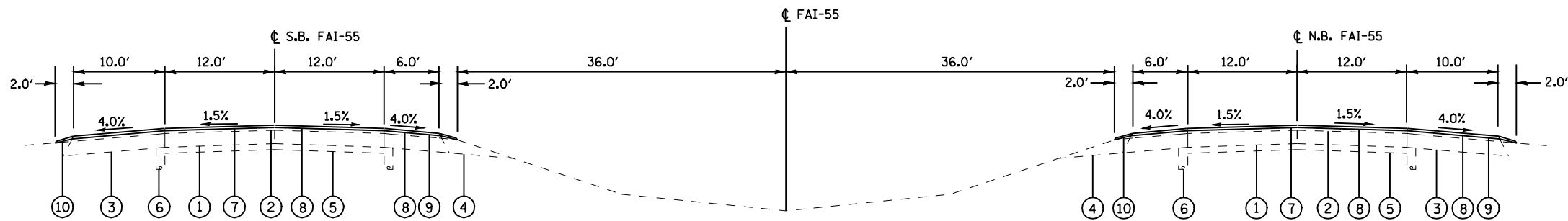
DISTRICT SIX	
EXAMINED <u>May 1</u> 20 <u>09</u>	<i>Sam J. Hoast</i>
OPERATIONS ENGINEER	
EXAMINED <u>May 8</u> 20 <u>09</u>	<i>Sam J. Hoast</i>
PROGRAM IMPLEMENTATION ENGINEER	
EXAMINED <u>May 14</u> 20 <u>09</u>	<i>ORML</i>
PROGRAM DEVELOPMENT ENGINEER	

SUMMARY OF QUANTITIES

CODE	ITEM	UNIT	100% STATE 1000
40600200	BITUMINOUS MATERIALS (PRIME COAT)	TON	4.2
40600300	AGGREGATE (PRIME COAT)	TON	21
40600990	TEMPORARY RAMP	SQ YD	740
40603550	POLYMERIZED HOT-MIX ASPHALT SURFACE COURSE, MIX "D", N105	TON	780
44000198	HOT-MIX ASPHALT SURFACE REMOVAL, VARIABLE DEPTH	SQ YD	11,100
48102100	AGGREGATE WEDGE SHOULDER, TYPE B	TON	121
48203100	HOT-MIX ASPHALT SHOULDERS	TON	463
64200105	SHOULDER RUMBLE STRIP	FOOT	4,500
67100100	MOBILIZATION	L SUM	1
70100420	TRAFFIC CONTROL AND PROTECTION, STANDARD 701411	EACH	4
70100700	TRAFFIC CONTROL AND PROTECTION, STANDARD 701406	L SUM	1
70300100	SHORT-TERM PAVEMENT MARKING	FOOT	864
70300230	TEMPORARY PAVEMENT MARKING - LINE 5"	FOOT	5,400
70300250	TEMPORARY PAVEMENT MARKING - LINE 8"	FOOT	440
70301000	WORK ZONE PAVEMENT MARKING REMOVAL	SQ FT	144
* 78100100	RAISED REFLECTIVE PAVEMENT MARKER	EACH	64
78300200	RAISED REFLECTIVE PAVEMENT MARKER REMOVAL	EACH	64
* X7800620	URETHANE PAVEMENT MARKING - LINE 5"	FOOT	5,400
* X7800640	URETHANE PAVEMENT MARKING - LINE 8"	FOOT	440

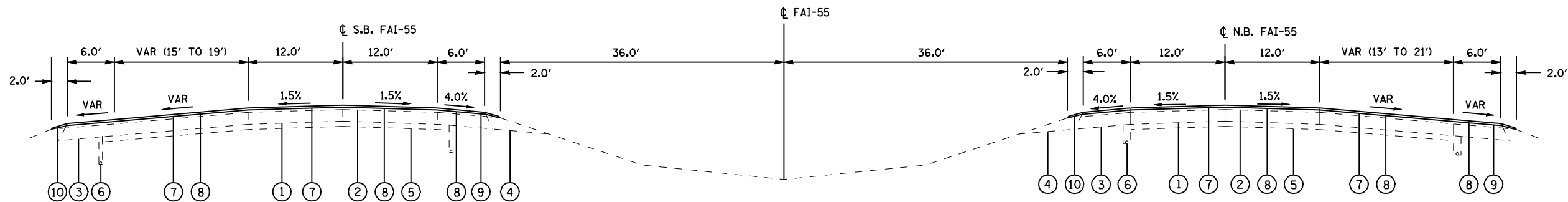
***SPECIALTY ITEMS**

FILE NAME =	USER NAME = coxte	DESIGNED -	REVISED -	STATE OF ILLINOIS DEPARTMENT OF TRANSPORTATION	SUMMARY OF QUANTITIES				F.A.I. RTE.	SECTION	COUNTY	TOTAL SHEETS	SHEET NO.
c:\pwork\pwork\COXTE\0134303\06720	S-shit-500.dgn	DRAWN -	REVISED -		SCALE:	SHEET NO.	OF	SHEETS	STA.	TO STA.	LOGAN	6	3
	PLOT SCALE = 100.0000 ' / IN.	CHECKED -	REVISED -								CONTRACT NO. 72C95		
	PLOT DATE = May-19-2009 09:22:50AM	DATE -	REVISED -								ILLINOIS FED. AID PROJECT		



SN 054-0054
 SN 054-0056
 SN 054-0058
 SN 054-0060 (SOUTH END)

SN 054-0053
 SN 054-0055
 SN 054-0057
 SN 054-0061 (SOUTH END)



SN 054-0060 (NORTH END)

SN 054-0061 (NORTH END)

LEGEND

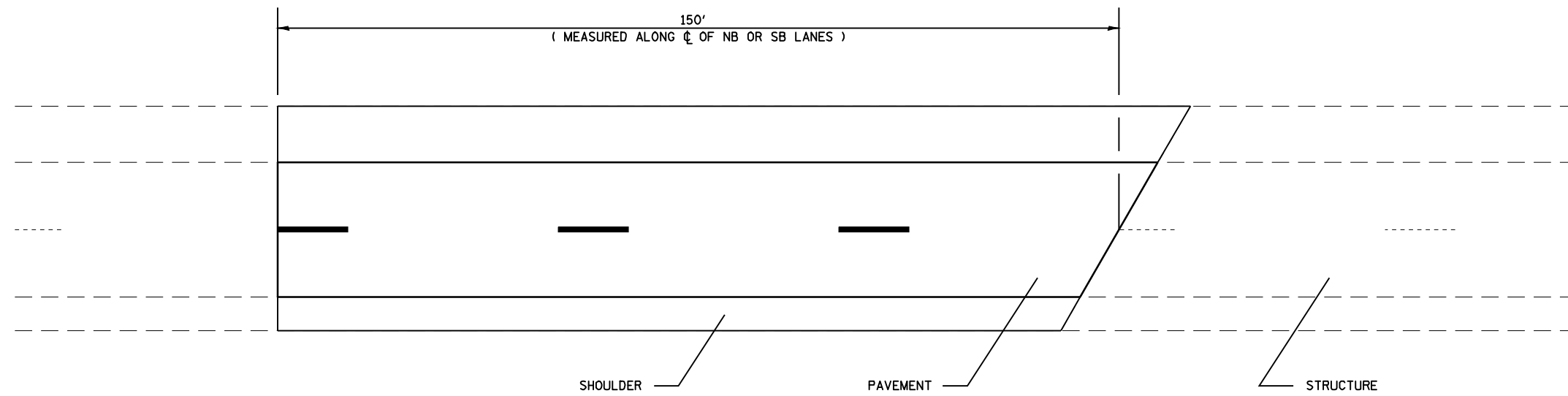
- ① EXIST. CRC PAVEMENT 9"
- ② EXIST. BITUMINOUS CONCRETE 3-1/4"
- ③ EXIST. BITUMINOUS SHOULDER 9"
- ④ EXIST. AGGREGATE SHOULDER
- ⑤ EXIST. STABILIZED SUBBASE 4"
- ⑥ EXIST. PIPE UNDERDRAINS
- ⑦ PROP. POLY. HMA SURF. CSE, MIX D, N105
- ⑧ PROP. HMA SURF. REMOVAL-VARIABLE DEPTH
- ⑨ PROP. HMA SHOULDERS
- ⑩ PROP. AGGREGATE WEDGE

FILE NAME =	USER NAME = coxte	DESIGNED -	REVISED -	STATE OF ILLINOIS DEPARTMENT OF TRANSPORTATION	TYPICAL SECTIONS			F.A.I. RTE. 55	SECTION 54-4 INT-RS	COUNTY LOGAN	TOTAL SHEETS 6	SHEET NO. 4
er\pwwork\PWIDOT\COXTE\d0134303\067205-sh-typical.dgn		DRAWN -	REVISED -		SCALE:	SHEET NO.	OF SHEETS	STA.	TO STA.	CONTRACT NO. 72C95		
		CHECKED -	REVISED -		ILLINOIS FED. AID PROJECT							
		DATE -	REVISED -									

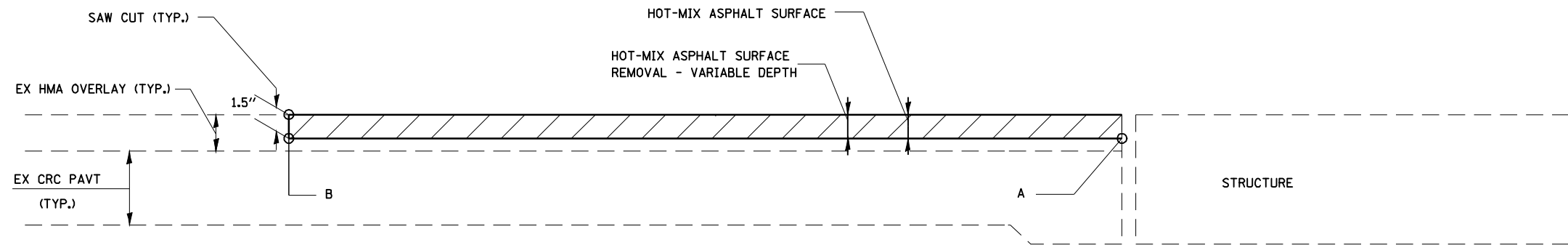
* *

STRUCTURE	APPROACH/ DEPARTURE	LENGTH	HMA SURFACE REMOVAL , VARIABLE DEPTH (SY)	POLYMERIZED HMA SURFACE COURSE (TON)	HMA SHOULDERS (TON)	BITUMINOUS PRIME COAT (TON)	AGGREGATE PRIME COAT (TON)	TEMPORARY RAMP (SY)	AGGREGATE SHOULDERS (TON)	SHOULDER RUMBLE STRIPS (FOOT)	URETHANE PAVEMENT MARKING - 5" (FOOT)	URETHANE PAVEMENT MARKING - 8" (FOOT)	RAISED REFL PAVT MARKER REMOVAL (EACH)	RAISED REFL PAVEMENT MARKER (EACH)	SHORT TERM PAVEMENT MARKING (FOOT)	WORK ZONE PAVT MARKING REMOVAL (SQ FT)
SN 054-0053	APP	150	666.67	44.80	29.87	0.25	1.33	44.44	7.59	300	337.5		4	4	54	9
SN 054-0053	DEP	150	666.67	44.80	29.87	0.25	1.33	44.44	7.59	300	337.5		4	4	54	9
SN 054-0054	APP	150	666.67	44.80	29.87	0.25	1.33	44.44	7.59	300	337.5		4	4	54	9
SN 054-0054	DEP	150	666.67	44.80	29.87	0.25	1.33	44.44	7.59	300	337.5		4	4	54	9
SN 054-0055	APP	150	666.67	44.80	29.87	0.25	1.33	44.44	7.59	300	337.5		4	4	54	9
SN 054-0055	DEP	150	666.67	44.80	29.87	0.25	1.33	44.44	7.59	300	337.5		4	4	54	9
SN 054-0056	APP	150	666.67	44.80	29.87	0.25	1.33	44.44	7.59	300	337.5		4	4	54	9
SN 054-0056	DEP	150	666.67	44.80	29.87	0.25	1.33	44.44	7.59	300	337.5		4	4	54	9
SN 054-0057	APP	150	666.67	44.80	29.87	0.25	1.33	44.44	7.59	300	337.5		4	4	54	9
SN 054-0057	DEP	150	666.67	44.80	29.87	0.25	1.33	44.44	7.59	300	337.5		4	4	54	9
SN 054-0058	APP	150	666.67	44.80	29.87	0.25	1.33	44.44	7.59	300	337.5		4	4	54	9
SN 054-0058	DEP	150	666.67	44.80	29.87	0.25	1.33	44.44	7.59	300	337.5		4	4	54	9
SN 054-0060	APP	150	883.33	76.53	22.40	0.34	1.77	58.89	7.59	150	337.5	220.0	4	4	54	9
SN 054-0060	DEP	150	666.67	44.80	29.87	0.25	1.33	44.44	7.59	300	337.5		4	4	54	9
SN 054-0061	APP	150	666.67	44.80	29.87	0.25	1.33	44.44	7.59	300	337.5		4	4	54	9
SN 054-0061	DEP	150	883.33	76.53	22.40	0.34	1.77	58.89	7.59	150	337.5	220.0	4	4	54	9
TOTALS			11,100.04	780.26	462.98	4.18	22.16	739.94	121.44	4,500	5,400.0	440.0	64	64	864	144

* - CALCULATION WERE DONE WITH AN ASSUMED HMA DEPTH OF 2"



TYPICAL PLAN VIEW



SIDE VIEW

	APPROACH		DEPARTURE	
	BUTT JOINT	ABUTMENT	BUTT JOINT	ABUTMENT
	STATION	STATION	STATION	STATION
	(B)	(A)	(B)	(A)
SN 054-0053	532+37.91	533+87.91	541+17.21	539+67.21
SN 054-0054	542+71.99	541+21.99	533+92.69	535+42.69
SN 054-0055	554+07.35	555+57.35	563+17.57	561+67.57
SN 054-0056	563+34.68	561+84.68	554+24.44	555+74.44
SN 054-0057	574+60.78	576+10.78	579+10.27	577+60.27
SN 054-0058	579+10.27	577+60.27	574+60.78	576+10.78
SN 054-0060	706+09.93	703+59.93	696+54.11	698+04.11
SN 054-0061	695+53.46	697+03.46	703+93.25	702+43.25

NOTES:

1. THE SAW CUTS SHALL BE INCLUDED IN THE COST OF HOT MIX ASPHALT SURFACE REMOVAL-VARIABLE DEPTH
2. HOT MIX ASPHALT QUANTITIES ARE ESTIMATED. ACTUAL QUANTITIES TO BE DETERMINED BY THE ENGINEER IN THE FIELD.