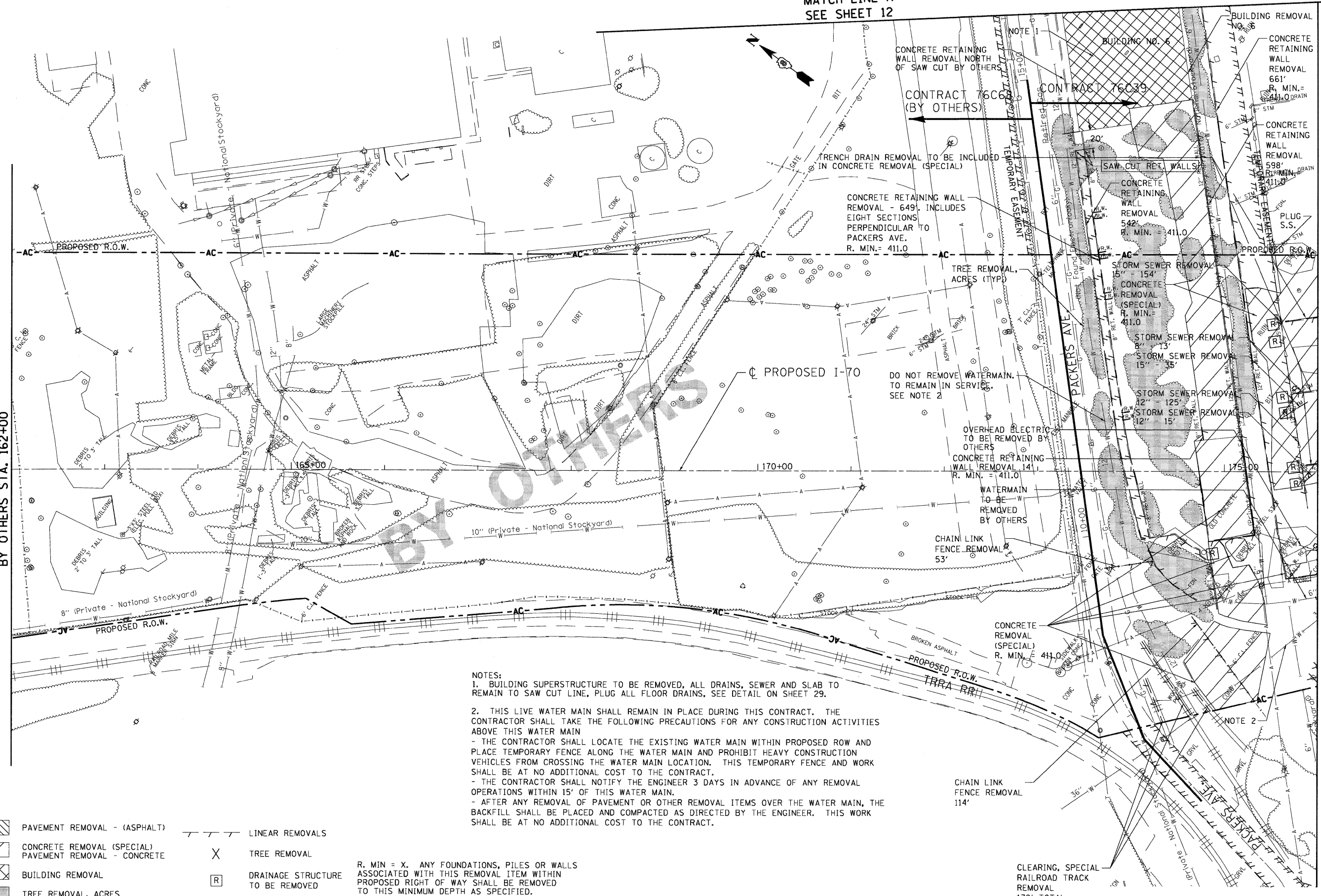


MATCH LINE A
SEE SHEET 12

BY OTHERS STA. 162+00

MATCH LINE STA. 176+00
SEE SHEET 10



NOTES:
 1. BUILDING SUPERSTRUCTURE TO BE REMOVED, ALL DRAINS, SEWER AND SLAB TO REMAIN TO SAW CUT LINE, PLUG ALL FLOOR DRAINS, SEE DETAIL ON SHEET 29.
 2. THIS LIVE WATER MAIN SHALL REMAIN IN PLACE DURING THIS CONTRACT. THE CONTRACTOR SHALL TAKE THE FOLLOWING PRECAUTIONS FOR ANY CONSTRUCTION ACTIVITIES ABOVE THIS WATER MAIN
 - THE CONTRACTOR SHALL LOCATE THE EXISTING WATER MAIN WITHIN PROPOSED ROW AND PLACE TEMPORARY FENCE ALONG THE WATER MAIN AND PROHIBIT HEAVY CONSTRUCTION VEHICLES FROM CROSSING THE WATER MAIN LOCATION. THIS TEMPORARY FENCE AND WORK SHALL BE AT NO ADDITIONAL COST TO THE CONTRACT.
 - THE CONTRACTOR SHALL NOTIFY THE ENGINEER 3 DAYS IN ADVANCE OF ANY REMOVAL OPERATIONS WITHIN 15' OF THIS WATER MAIN.
 - AFTER ANY REMOVAL OF PAVEMENT OR OTHER REMOVAL ITEMS OVER THE WATER MAIN, THE BACKFILL SHALL BE PLACED AND COMPACTED AS DIRECTED BY THE ENGINEER. THIS WORK SHALL BE AT NO ADDITIONAL COST TO THE CONTRACT.

LEGEND	
	PAVEMENT REMOVAL - (ASPHALT)
	CONCRETE REMOVAL (SPECIAL) PAVEMENT REMOVAL - CONCRETE
	BUILDING REMOVAL
	TREE REMOVAL, ACRES
	LINEAR REMOVALS
	TREE REMOVAL
	DRAINAGE STRUCTURE TO BE REMOVED

R. MIN = X. ANY FOUNDATIONS, PILES OR WALLS ASSOCIATED WITH THIS REMOVAL ITEM WITHIN PROPOSED RIGHT OF WAY SHALL BE REMOVED TO THIS MINIMUM DEPTH AS SPECIFIED.

FILE NAME =
 \$FILEL\$
TENG TENG & ASSOCIATES, INC.
 ENGINEERS/ARCHITECTS/PLANNERS
 CHICAGO, ILLINOIS

USER NAME = \$USER\$
 DESIGNED - JB
 DRAWN - JB
 CHECKED - ACL
 DATE - 05/15/09
 PLOT SCALE = \$SCALE\$
 PLOT DATE = \$DATES\$

REVISED -
 REVISED -
 REVISED -
 REVISED -

STATE OF ILLINOIS
DEPARTMENT OF TRANSPORTATION
 I-70 CONNECTION

DEMOLITION PLAN
STA. 162+00 TO STA. 176+00

SCALE: 1"=50'
 SHEET NO. OF SHEETS STA. TO STA.

F.A.P. RTE.	SECTION	COUNTY	TOTAL SHEETS	SHEET NO.
998	82-1DM	ST. CLAIR	41	9
CONTRACT NO. 76C39				
FED. ROAD DIST. NO. ILLINOIS FED. AID PROJECT				