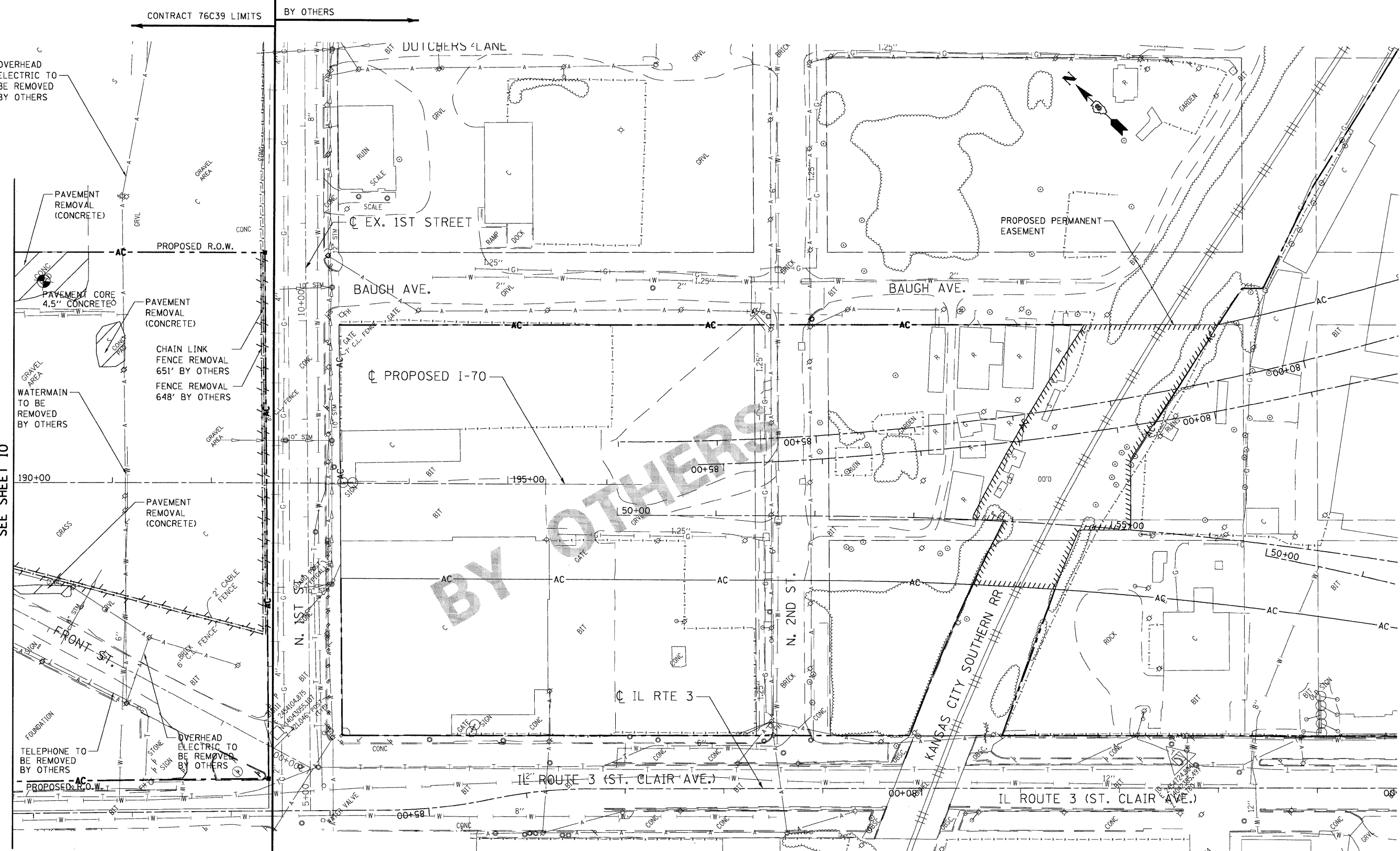


\ORCON\99\MOBILE\1.DGN, \ORCON\2A\BORDER\1.DGN, \ORCON\2A\BORDER\2.DGN, \ORCON\2A\BORDER\3.DGN, \ORCON\2A\BORDER\4.DGN, \ORCON\2A\BORDER\5.DGN, \ORCON\2A\BORDER\6.DGN, \ORCON\2A\BORDER\7.DGN, \ORCON\2A\BORDER\8.DGN, \ORCON\2A\BORDER\9.DGN, \ORCON\2A\BORDER\10.DGN, \ORCON\2A\BORDER\11.DGN, \ORCON\2A\BORDER\12.DGN, \ORCON\2A\BORDER\13.DGN, \ORCON\2A\BORDER\14.DGN, \ORCON\2A\BORDER\15.DGN, \ORCON\2A\BORDER\16.DGN, \ORCON\2A\BORDER\17.DGN, \ORCON\2A\BORDER\18.DGN, \ORCON\2A\BORDER\19.DGN, \ORCON\2A\BORDER\20.DGN, \ORCON\2A\BORDER\21.DGN, \ORCON\2A\BORDER\22.DGN, \ORCON\2A\BORDER\23.DGN, \ORCON\2A\BORDER\24.DGN, \ORCON\2A\BORDER\25.DGN, \ORCON\2A\BORDER\26.DGN, \ORCON\2A\BORDER\27.DGN, \ORCON\2A\BORDER\28.DGN, \ORCON\2A\BORDER\29.DGN, \ORCON\2A\BORDER\30.DGN, \ORCON\2A\BORDER\31.DGN, \ORCON\2A\BORDER\32.DGN, \ORCON\2A\BORDER\33.DGN, \ORCON\2A\BORDER\34.DGN, \ORCON\2A\BORDER\35.DGN, \ORCON\2A\BORDER\36.DGN, \ORCON\2A\BORDER\37.DGN, \ORCON\2A\BORDER\38.DGN, \ORCON\2A\BORDER\39.DGN, \ORCON\2A\BORDER\40.DGN, \ORCON\2A\BORDER\41.DGN, \ORCON\2A\BORDER\42.DGN, \ORCON\2A\BORDER\43.DGN, \ORCON\2A\BORDER\44.DGN, \ORCON\2A\BORDER\45.DGN, \ORCON\2A\BORDER\46.DGN, \ORCON\2A\BORDER\47.DGN, \ORCON\2A\BORDER\48.DGN, \ORCON\2A\BORDER\49.DGN, \ORCON\2A\BORDER\50.DGN, \ORCON\2A\BORDER\51.DGN, \ORCON\2A\BORDER\52.DGN, \ORCON\2A\BORDER\53.DGN, \ORCON\2A\BORDER\54.DGN, \ORCON\2A\BORDER\55.DGN, \ORCON\2A\BORDER\56.DGN, \ORCON\2A\BORDER\57.DGN, \ORCON\2A\BORDER\58.DGN, \ORCON\2A\BORDER\59.DGN, \ORCON\2A\BORDER\60.DGN, \ORCON\2A\BORDER\61.DGN, \ORCON\2A\BORDER\62.DGN, \ORCON\2A\BORDER\63.DGN, \ORCON\2A\BORDER\64.DGN, \ORCON\2A\BORDER\65.DGN, \ORCON\2A\BORDER\66.DGN, \ORCON\2A\BORDER\67.DGN, \ORCON\2A\BORDER\68.DGN, \ORCON\2A\BORDER\69.DGN, \ORCON\2A\BORDER\70.DGN, \ORCON\2A\BORDER\71.DGN, \ORCON\2A\BORDER\72.DGN, \ORCON\2A\BORDER\73.DGN, \ORCON\2A\BORDER\74.DGN, \ORCON\2A\BORDER\75.DGN, \ORCON\2A\BORDER\76.DGN, \ORCON\2A\BORDER\77.DGN, \ORCON\2A\BORDER\78.DGN, \ORCON\2A\BORDER\79.DGN, \ORCON\2A\BORDER\80.DGN, \ORCON\2A\BORDER\81.DGN, \ORCON\2A\BORDER\82.DGN, \ORCON\2A\BORDER\83.DGN, \ORCON\2A\BORDER\84.DGN, \ORCON\2A\BORDER\85.DGN, \ORCON\2A\BORDER\86.DGN, \ORCON\2A\BORDER\87.DGN, \ORCON\2A\BORDER\88.DGN, \ORCON\2A\BORDER\89.DGN, \ORCON\2A\BORDER\90.DGN, \ORCON\2A\BORDER\91.DGN, \ORCON\2A\BORDER\92.DGN, \ORCON\2A\BORDER\93.DGN, \ORCON\2A\BORDER\94.DGN, \ORCON\2A\BORDER\95.DGN, \ORCON\2A\BORDER\96.DGN, \ORCON\2A\BORDER\97.DGN, \ORCON\2A\BORDER\98.DGN, \ORCON\2A\BORDER\99.DGN, \ORCON\2A\BORDER\100.DGN

MATCH LINE STA. 190+00
 SEE SHEET 10



LEGEND	
	PAVEMENT REMOVAL - (ASPHALT)
	CONCRETE REMOVAL (SPECIAL) PAVEMENT REMOVAL - CONCRETE
	BUILDING REMOVAL
	TREE REMOVAL, ACRES
	LINEAR REMOVALS
	TREE REMOVAL
	DRAINAGE STRUCTURE TO BE REMOVED

R. MIN = X. ANY FOUNDATIONS, PILES OR WALLS ASSOCIATED WITH THIS REMOVAL ITEM WITHIN PROPOSED RIGHT OF WAY SHALL BE REMOVED TO THIS MINIMUM DEPTH AS SPECIFIED.

FILE NAME =
 #FILEL#
TENG TENG & ASSOCIATES, INC.
 ENGINEERS/ARCHITECTS/PLANNERS
 CHICAGO, ILLINOIS

USER NAME = #USER#
 PLOT SCALE = #SCALE#
 PLOT DATE = #DATE#

DESIGNED - JB
 DRAWN - JB
 CHECKED - ACL
 DATE - 05/15/09

REVISED -
 REVISED -
 REVISED -
 REVISED -

STATE OF ILLINOIS
DEPARTMENT OF TRANSPORTATION
 I-70 CONNECTION

DEMOLITION PLAN
STA. 190+00 TO STA. TO TRI-LEVEL

SCALE: 1"=50' SHEET NO. OF SHEETS STA. TO STA.

F.A.P. RTE.	SECTION	COUNTY	TOTAL SHEETS	SHEET NO.
998	82-10M	ST. CLAIR	41	11
FED. ROAD DIST. NO. ILLINOIS FED. AID PROJECT				

CONTRACT NO. 76C39